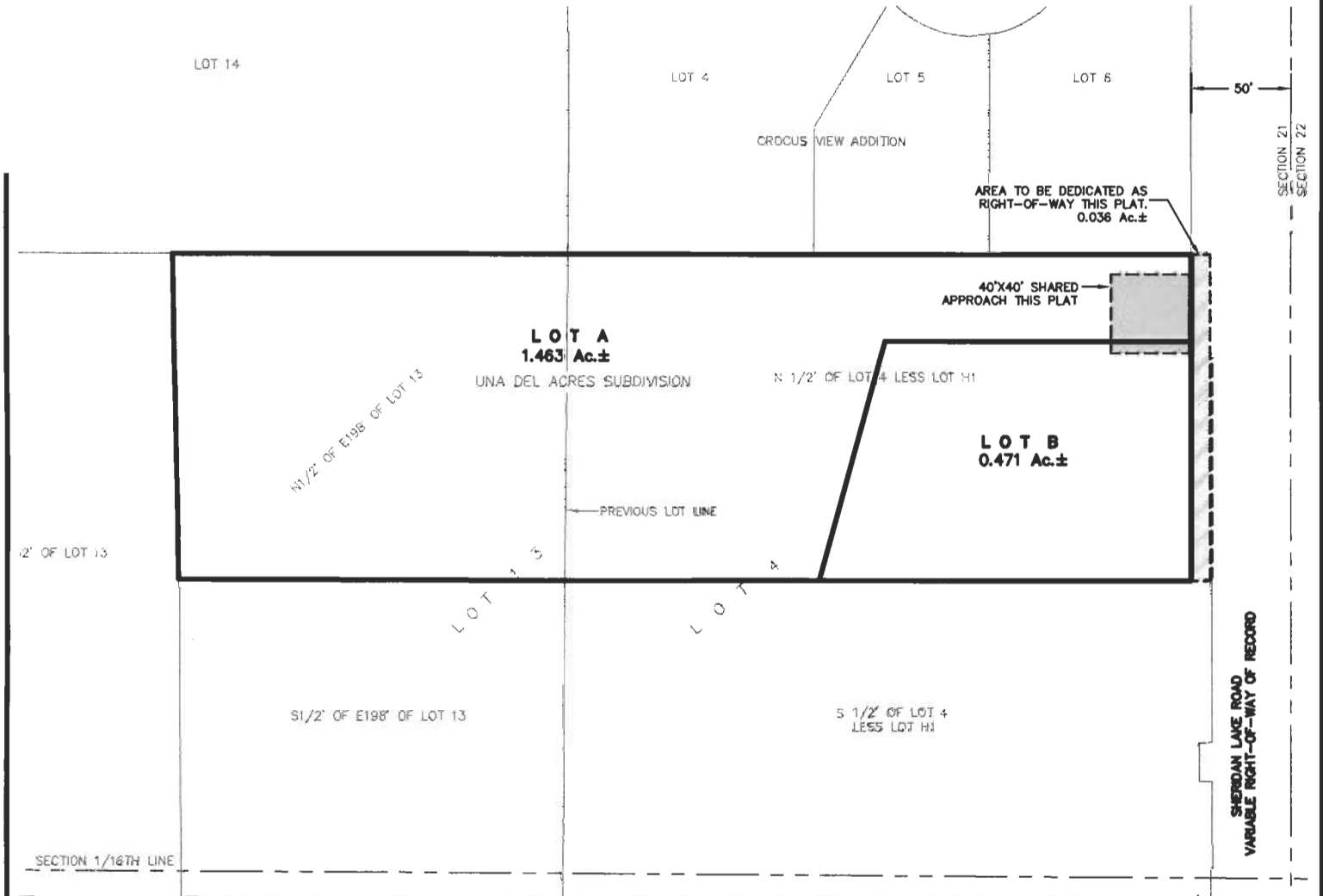


PLAT OF LOTS A AND B OF UNA DEL ACRES

(formerly N1/2' of Lot 4 and N1/2 of E 198' of Lot 13 of Una Del Acres)
LOCATED IN THE NE1/4 OF THE SE1/4 OF
SECTION 21, T1N, R7E, BHM
RAPID CITY, PENNINGTON COUNTY, SOUTH DAKOTA



Renner & Associates, LLC.

616 Sixth St. * Rapid City, SD 57701 * 605/721-7310
FAX: 605/721-7313 * E-MAIL: Gary@RennerAssoc.com
* Spearfish 605/717-0016 *

