

Landscaping

1204 Mt. Rushmore Road
Rapid City, South Dakota 57701

The property was built in 1883 and has mature landscaping in place. Please refer to the attached drawing for a description.

	<u>Points</u>
1. This is a very large mature elm tree	2000
2. These are two (2) large mature lilac bushes	500
3. This is a mature shrub	250
4. This is a mature lineal trimmed hedge	250
5. This is a mature lineal trimmed hedge	250
6. This is a mature shrub	250
7. This is a mature shrub	<u>250</u>
Total	3,750

RECEIVED

OCT 24 2008

Rapid City Growth
Management DepartmentPoint Required

Lot size is 72.15' x 60' =	4,329 sf
Building footprint is 28' x 32' =	<u>896</u> sf
Points Required =	3,433

PLANNED COMMERCIAL DEVELOPMENT
FOR RAY ELLIOTT, APPLICANT

Richard A. Rothermel
ALLIANCE OF ARCHITECTS AND ENGINEERS

FINAL**RECEIVED**

NOV 04 2005

Rapid City Growth
Management Department

1204 Mt Rushmore Rd
Major Amendment / PCD
Rev 10/24/08

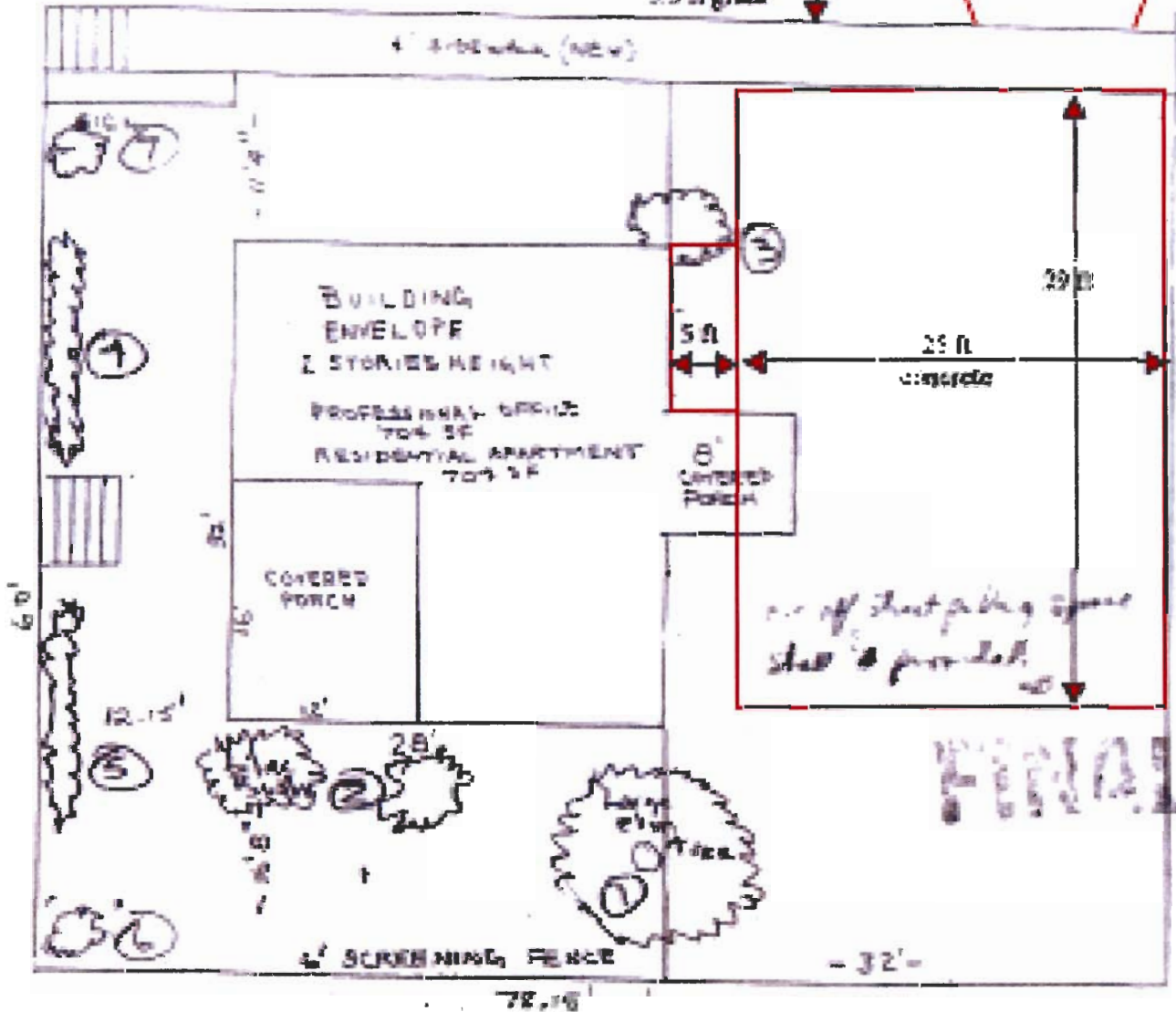
CENTRALINE
520 Kansas City St. Suite 207
Rapid City, SD 57701
605.341.3199
centraline@aol.com

CLARK ST.

10.5 ft Drive

5.5 ft grass

4' sidewalk (NEW)



SITE PLAN

SCALE 3/32" = 1'

ADDRESS: 1204 MT. RUSHMORE RD.

OWNER: RAY ELLIOTT
324 COLUMBUS ST. #202
RAPID CITY, SD 57701

RECEIVED

NOV 04 2008

Rapid City Growth
Management Dept.