

16" HIGH LEVEL WATER MAIN NOTES		
STATION	OFFSET	ITEM DESCRIPTION
0+12.19	2.50 L	REMOVE AND DISPOSE OF EXISTING 16" PVC CAP, CONNECT NEW 16" PVC WATER MAIN
0+54.88	2.50 L	16" 11 1/2" VERTICAL BEND
0+78.29	2.50 L	16" 11 1/2" VERTICAL BEND
1+20.00	2.50 L	JACK & BORE 30" STEEL SLEEVE - 192"
3+16.88	2.50 L	16" 45° BEND
3+28.88	2 L	16" 45° BEND
4+37.26	2 L	16" 45° HORIZONTAL & VERTICAL BEND
4+46.60	2 L	16" 45° BEND
4+69.52	1.25 L	16" GATE VALVE
4+74.52	1.25 L	16"x18"x6" TEE
4+74.52	5.91 L	FRS HYDRANT ASSEMBLY
4+89.22	1.25 L	16" HIGH DEFLECTION VERTICAL COUPLER
16" LOW LEVEL WATER MAIN NOTES		
STATION	OFFSET	ITEM DESCRIPTION
0+12.19	2.50 R	REMOVE AND DISPOSE OF EXISTING 16" PVC CAP, CONNECT NEW 16" PVC WATER MAIN
0+54.88	2.50 R	16" 11 1/2" VERTICAL BEND
0+78.29	2.50 R	16" 11 1/2" VERTICAL BEND
1+408.75	2.50 R	16" 45° BEND
1+16.25	10 R	16" 45° BEND
1+20.00	10 R	JACK & BORE 30" STEEL SLEEVE - 192"
3+29.82	6.15 R	16" 45° BEND
3+33.97	2 R	16" 45° BEND
4+37.26	2 R	16" 45° HORIZONTAL & VERTICAL BEND
4+44.79	2 R	16" 45° BEND
4+69.52	1.25 R	16" GATE VALVE
4+74.52	1.25 R	16"x18"x6" TEE
4+74.52	8.23 R	FRS HYDRANT ASSEMBLY
5+06.03	1.25 R	16" HIGH DEFLECTION VERTICAL COUPLER
MISCELLANEOUS ITEMS		
STATION	OFFSET	ITEM DESCRIPTION
4+60	27 L	REMOVE AND RESET BARBED WIRE FENCE - 65'
4+60	38 R	

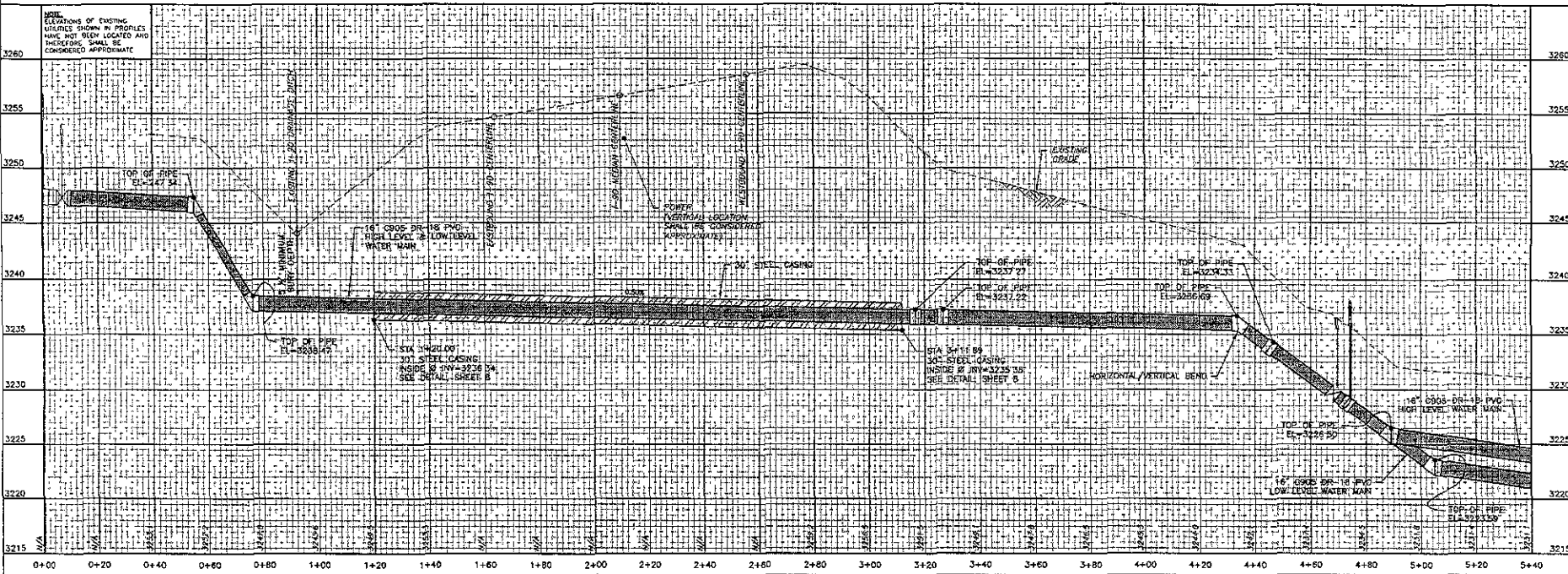
DREAM DESIGN
 CONSULTING ENGINEERS & ARCHITECTS
 1000 S. DIVISION ST. SUITE 100
 RAPID CITY, SD 57102
 (605) 343-1111

PRELIMINARY FOR REVIEW ONLY

CITY OF RAPID CITY
 GROWTH MANAGEMENT DEPT
 DEVELOPMENT SERVICES

Plans are prepared for general information and applicable governmental regulations. Appropriate design criteria and engineering standards. The City of Rapid City does not certify the liability, adequacy or completeness of the data or drawings, which are the responsibility of the engineer at record. All necessary permits shall be obtained prior to construction of the proposed public improvements.

Engineering Station: 0807-879
 COMMENTS: NONE
 Prepare Job No: 080850
 Drawn By: MESS
 Reviewed By: STOKLOS
 Prepare Date: 10/2007
 Survey Date: 10/2007



RUSHMORE CROSSING
 OFFSITE HIGH and LOW LEVEL
 WATER MAINS

16" PVC WATER MAINS
 PLAN / PROFILE
 STA 0+00 TO 5+40

Sheet Number
 4 of 9

16" HIGH LEVEL WATER MAIN NOTES		
STATION	OFFSET	ITEM DESCRIPTION
8+26.65	1.25'L	16" HIGH DEFLECTION VERTICAL COUPLER
8+69.60	1.25'L	16" HIGH DEFLECTION VERTICAL COUPLER

16" LOW LEVEL WATER MAIN NOTES		
STATION	OFFSET	ITEM DESCRIPTION
8+26.65	1.25'R	16" HIGH DEFLECTION VERTICAL COUPLER
8+69.60	1.25'R	16" HIGH DEFLECTION VERTICAL COUPLER

Prepared By:

DREAM DESIGN
INTERNATIONAL, INC.
CONSULTING ENGINEERS
10000 W. 10th Avenue, Suite 1000, Golden, CO 80401

PRELIMINARY FOR REVIEW ONLY

CITY OF RAPID CITY
GROWTH MANAGEMENT DEPT
DEVELOPMENT SERVICES

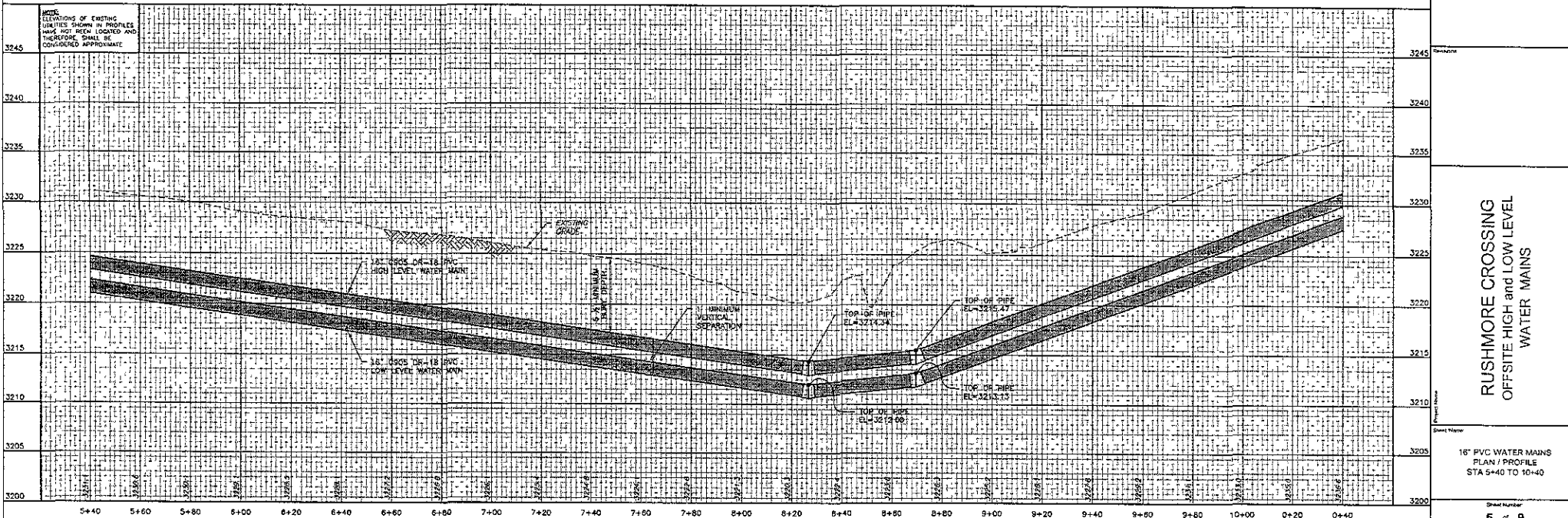
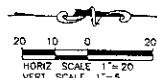
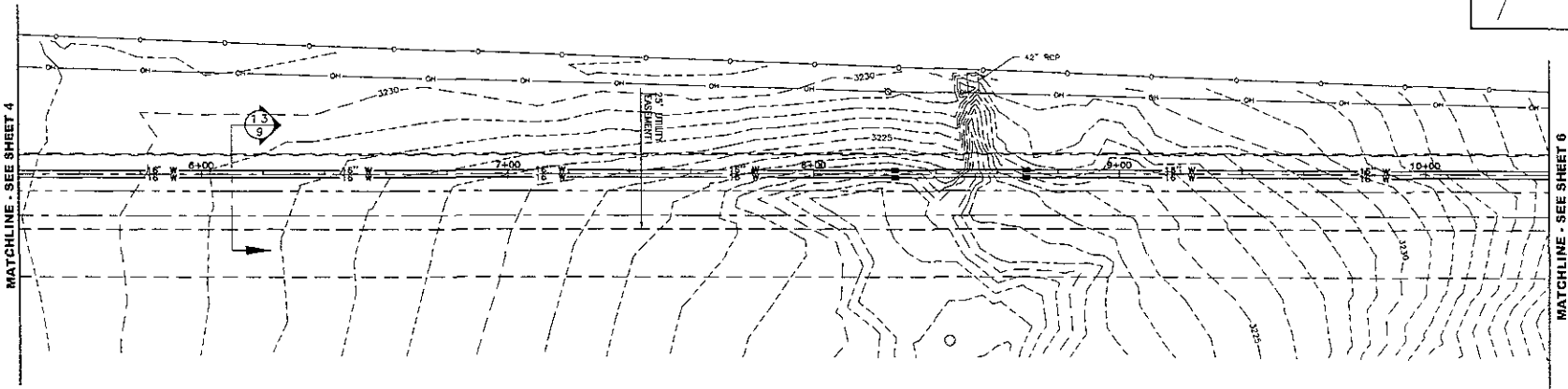
Plans are reviewed for general conformance with applicable governmental regulations, ordinances, design standards and engineering standards. The City of Rapid City does not warrant the suitability, accuracy or completeness of the plans or design, which are the responsibility of the engineer of record. All necessary permits shall be obtained prior to construction of the proposed public improvements.

Engineering Reference	Date

Comments:

Sheet No.	Designed By	Drawn By
02 0028.30	STOMIUS	MDS

Surveyed by: Survey Data
 FISK CONSULTING ENG. 10/2007
 Submit



16" HIGH LEVEL WATER MAIN NOTES

STATION	OFFSET	ITEM DESCRIPTION
11+47.67	1.25 L	16" GATE VALVE
11+55.03	1.25 L	16" HIGH DEFLECTION VERTICAL COUPLER
11+60.24	1.25 L	16" 16 X 16 TEE
11+60.24	5.91 L	FIRE HYDRANT ASSEMBLY
11+66.24	1.25 L	16" GATE VALVE
12+23.83	1.25 L	16" HIGH DEFLECTION VERTICAL COUPLER
13+40.19	1.25 L	16" HIGH DEFLECTION VERTICAL COUPLER
14+29.55	1.25 L	16" 11 X BEND
14+42.92	1.14 R	REMOVE AND DISPOSE OF EXISTING 16" PVC CAP, CONNECT NEW 16" PVC WATER MAIN

16" LOW LEVEL WATER MAIN NOTES

STATION	OFFSET	ITEM DESCRIPTION
11+47.67	1.25 R	16" GATE VALVE
11+55.03	1.25 R	16" HIGH DEFLECTION VERTICAL COUPLER
11+60.24	1.25 R	16" 16 X 16 TEE
11+60.24	8.25 R	FIRE HYDRANT ASSEMBLY
11+66.24	1.25 R	16" GATE VALVE
12+23.83	1.25 R	16" HIGH DEFLECTION VERTICAL COUPLER
13+40.19	1.25 R	16" HIGH DEFLECTION VERTICAL COUPLER
14+07.19	1.25 R	16" 11 X BEND
14+41.79	7.44 R	REMOVE AND DISPOSE OF EXISTING 16" PVC CAP CONNECT NEW 16" PVC WATER MAIN

MISCELLANEOUS ITEMS

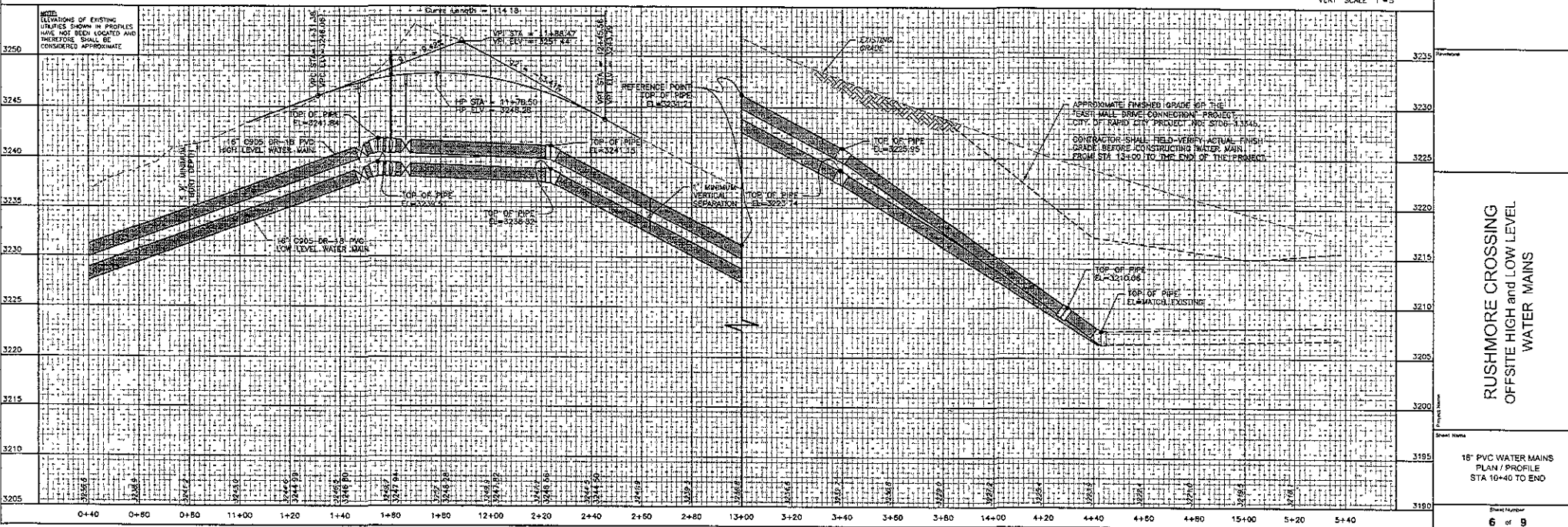
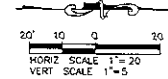
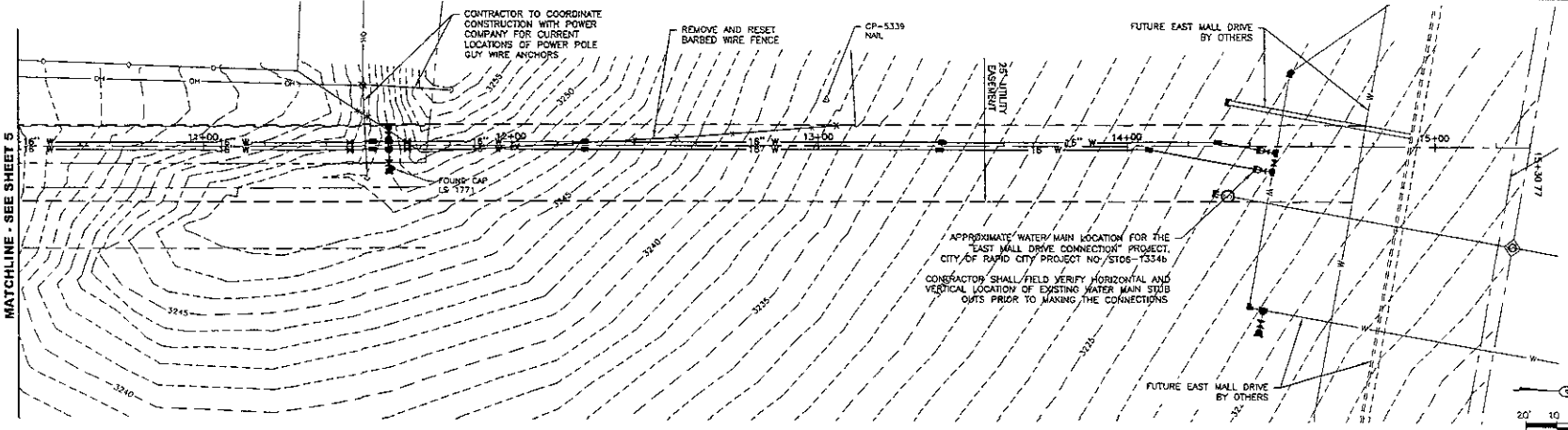
STATION	OFFSET	ITEM DESCRIPTION
11+30	25 L	REMOVE AND RESET BARBED WIRE FENCE - 215'
13+12	31 L	

DREAM DESIGN
CONSULTING NATIONAL, INC.
10000 W. 15th Street, Suite 100
Overland Park, KS 66211
Tel: 913.661.1100
Fax: 913.661.1101

PRELIMINARY FOR REVIEW ONLY

CITY OF RAPID CITY GROWTH MANAGEMENT DEPT DEVELOPMENT SERVICES

Please see attached for general information with applicable governmental regulations, standards, design criteria and engineering standards. The City of Rapid City does not certify the suitability, adequacy or completeness of this plan or drawing, which use the responsibility of the engineer or architect. All construction permits shall be obtained prior to construction of the proposed public improvements.



RUSHMORE CROSSING OFFSITE HIGH and LOW LEVEL WATER MAINS

16" PVC WATER MAINS PLAN / PROFILE STA 10+40 TO END