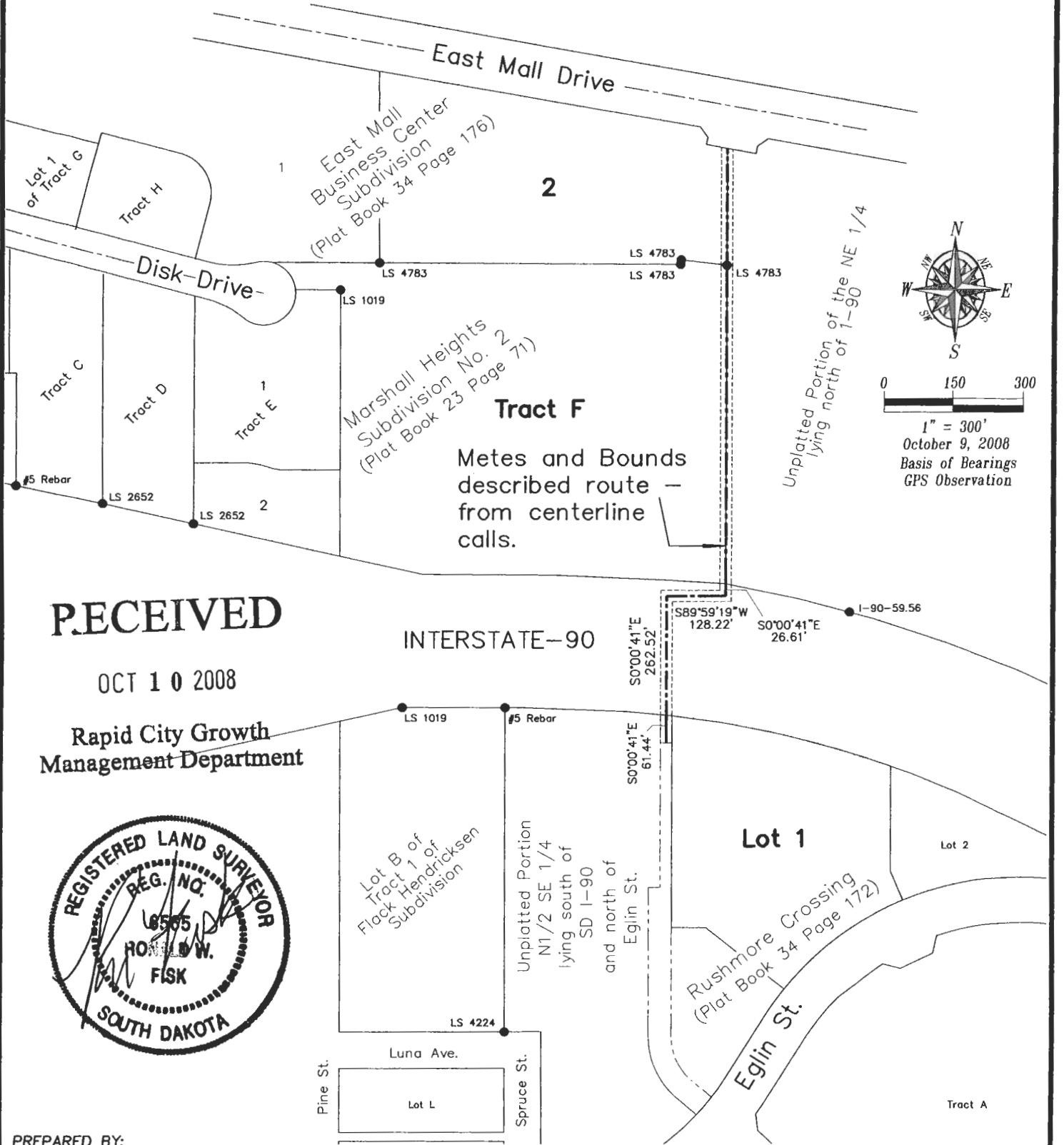


# EXHIBIT A

Boundary Exhibit with Metes and Bounds  
Located in Section 30, T2N, R8E, BHM,  
Rapid City, Pennington County, South Dakota



## RECEIVED

OCT 10 2008

Rapid City Growth  
Management Department



PREPARED BY:  
FISK LAND SURVEYING & CONSULTING ENGINEERS, INC.  
P.O. BOX 8154, RAPID CITY, SD 57709 (605) 348-1538 October 9, 2008

NO. 07-03-01