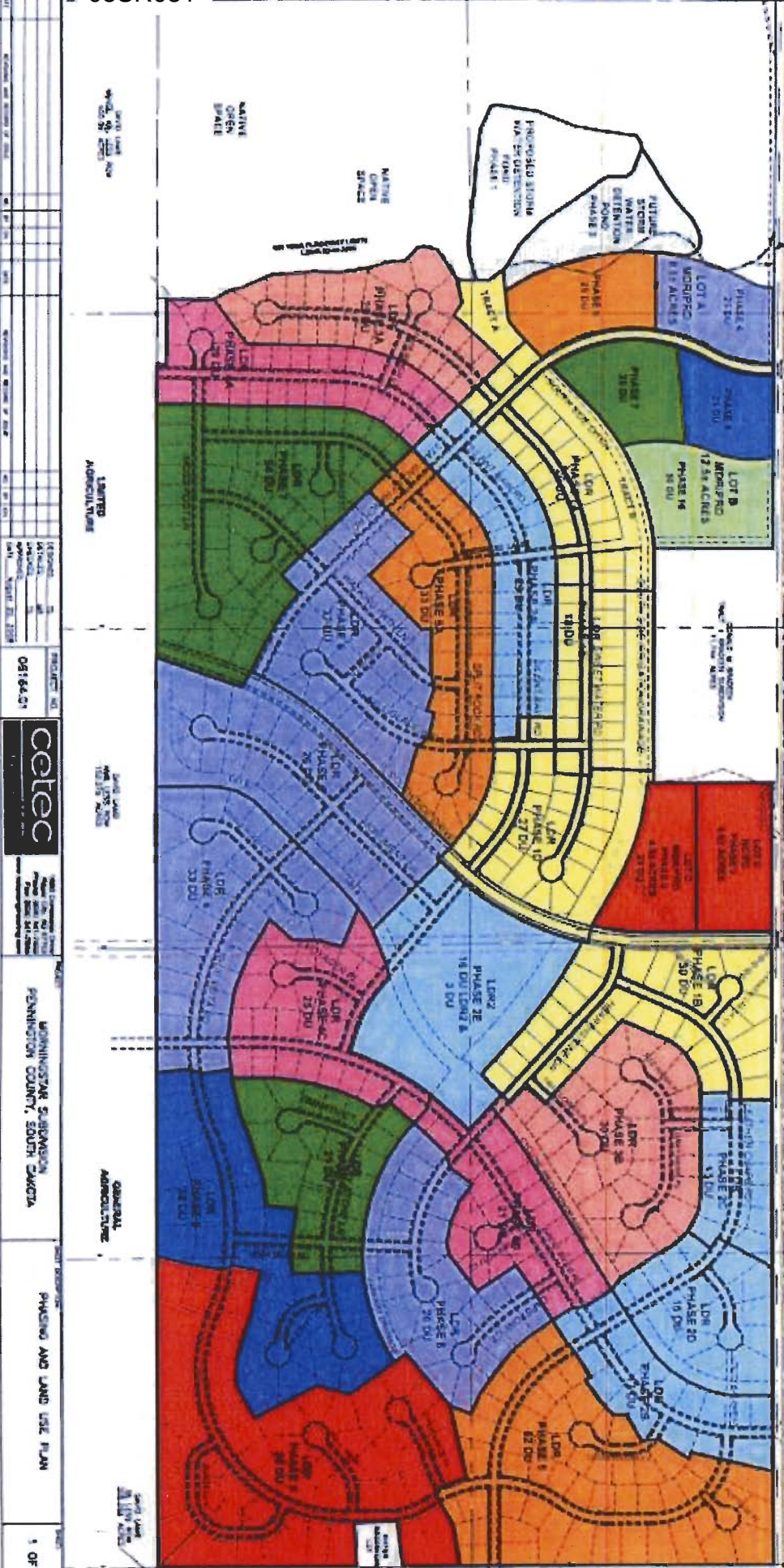


08SR081



PHASING KEY

[Yellow]	PHASE 1	[Blue]	PHASE 8
[Light Blue]	PHASE 2	[Green]	PHASE 9
[Pink]	PHASE 3	[Dark Blue]	PHASE 10
[Orange]	PHASE 4	[Red]	PHASE 11
[Light Green]	PHASE 5	[Light Blue]	PHASE 12
[Dark Green]	PHASE 6	[Light Green]	PHASE 13
[Light Yellow]	PHASE 7	[Light Yellow]	PHASE 14
[Light Blue]	PHASE 15	[Light Blue]	PHASE 16

LAND USE KEY

SYMBOL	DESCRIPTION	AREA AC.	PERCENT
[Yellow]	RESIDENTIAL SINGLE-FAMILY	11.1 AC	100%
[Light Blue]	RESIDENTIAL MEDIUM-DENSITY	0.00 AC	0%
[Pink]	RESIDENTIAL HIGH-DENSITY	0.00 AC	0%
[Orange]	RESIDENTIAL VERY-HIGH-DENSITY	0.00 AC	0%
[Light Green]	RESIDENTIAL LOW-DENSITY	0.00 AC	0%
[Dark Green]	RESIDENTIAL VERY-LOW-DENSITY	0.00 AC	0%
[Dark Blue]	RESIDENTIAL EXTREMELY-LOW-DENSITY	0.00 AC	0%
[Red]	RESIDENTIAL EXTREMELY-HIGH-DENSITY	0.00 AC	0%
[Light Blue]	RESIDENTIAL MEDIUM-DENSITY	0.00 AC	0%
[Light Green]	RESIDENTIAL LOW-DENSITY	0.00 AC	0%
[Dark Green]	RESIDENTIAL VERY-LOW-DENSITY	0.00 AC	0%
[Dark Blue]	RESIDENTIAL EXTREMELY-LOW-DENSITY	0.00 AC	0%
[Red]	RESIDENTIAL EXTREMELY-HIGH-DENSITY	0.00 AC	0%
[Light Blue]	RESIDENTIAL MEDIUM-DENSITY	0.00 AC	0%
[Light Green]	RESIDENTIAL LOW-DENSITY	0.00 AC	0%
[Dark Green]	RESIDENTIAL VERY-LOW-DENSITY	0.00 AC	0%
[Dark Blue]	RESIDENTIAL EXTREMELY-LOW-DENSITY	0.00 AC	0%
[Red]	RESIDENTIAL EXTREMELY-HIGH-DENSITY	0.00 AC	0%

LEGEND

PHASING KEY

RESIDENTIAL SINGLE-FAMILY

RESIDENTIAL MEDIUM-DENSITY

RESIDENTIAL HIGH-DENSITY

RESIDENTIAL VERY-HIGH-DENSITY

RESIDENTIAL LOW-DENSITY

RESIDENTIAL VERY-LOW-DENSITY

RESIDENTIAL EXTREMELY-LOW-DENSITY

RESIDENTIAL EXTREMELY-HIGH-DENSITY

RESIDENTIAL MEDIUM-DENSITY

RESIDENTIAL LOW-DENSITY

RESIDENTIAL VERY-LOW-DENSITY

RESIDENTIAL EXTREMELY-LOW-DENSITY

RESIDENTIAL EXTREMELY-HIGH-DENSITY

PROPOSED

Aug 21 2006



WINNIPEG SUBDIVISION
 PENNINGTON COUNTY, SOUTH CAROLINA

PHASING AND LAND USE PLAN