



0 40 80
1" = 40'
July 7, 2008

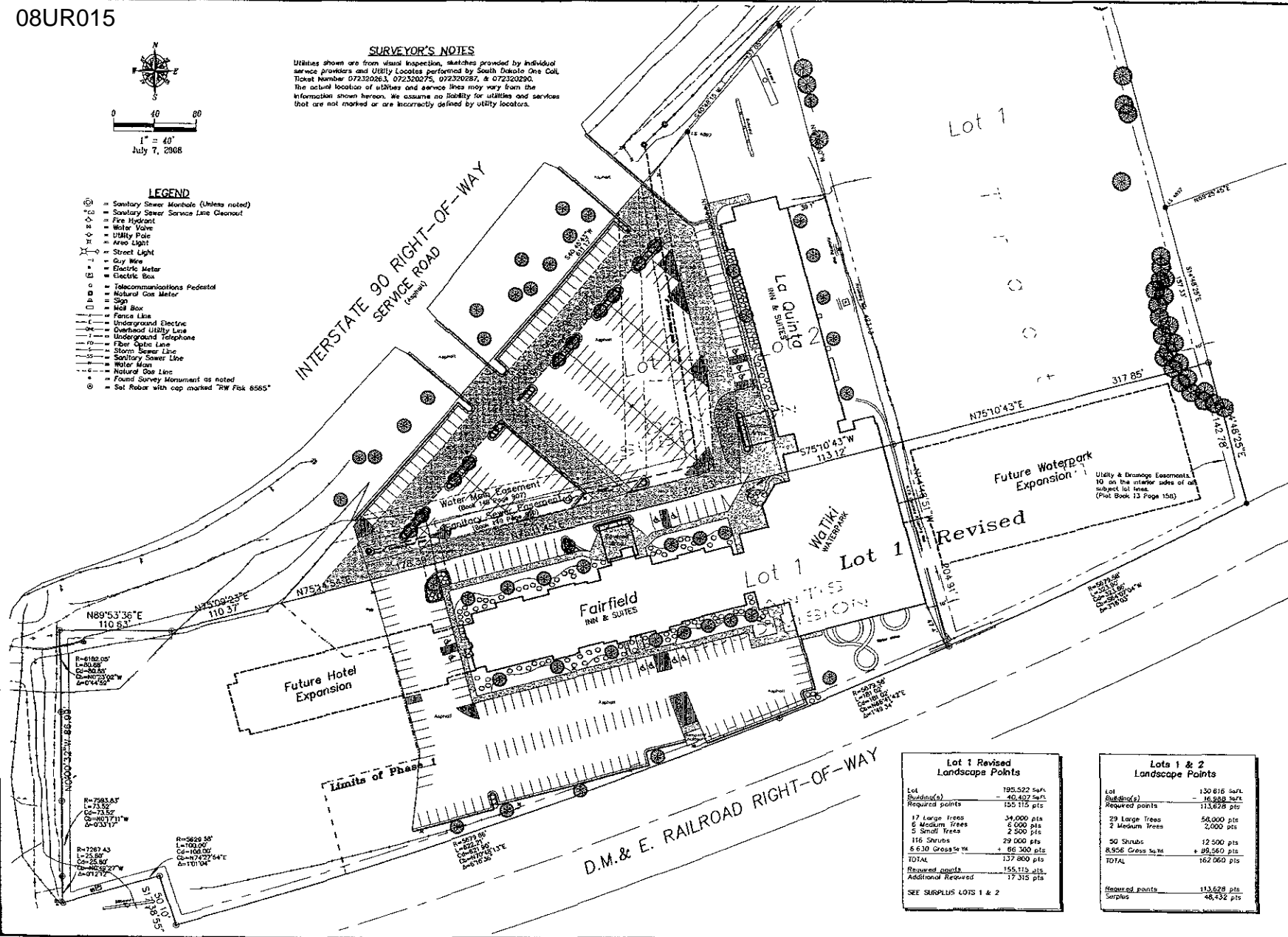
SURVEYOR'S NOTES

Utilities shown are from visual inspection, sketches provided by individual service providers and Utility Locates performed by South Dakota One Call, Ticket Number 072320263, 072320275, 072320287, & 072320290. The actual location of utilities and service lines may vary from the information shown hereon. We assume no liability for utilities and services that are not marked or are inaccurately defined by utility locators.

LEGEND

- ⊙ = Sanitary Sewer Manhole (Unless noted)
- ⊙ = Sanitary Sewer Service Line Cleanout
- ⊙ = Fire Hydrant
- ⊙ = Water Valve
- ⊙ = Utility Pole
- ⊙ = Area Light
- ⊙ = Street Light
- ⊙ = Guy Wire
- ⊙ = Electric Meter
- ⊙ = Electric Box
- ⊙ = Telecommunications Pedestal
- ⊙ = Natural Gas Meter
- ⊙ = Sign
- ⊙ = Mail Box
- = Fence Line
- = Underground Electric
- = Overhead Utility Line
- = Underground Telephone
- = Fiber Optic Line
- = Storm Sewer Line
- = Sanitary Sewer Line
- = Water Main
- = Natural Gas Line
- ⊙ = Found Survey Monument as noted
- ⊙ = Set Rebar with cap marked "RW Fisk 6565"

INTERSTATE 90 RIGHT-OF-WAY
SERVICE ROAD
(Asymptotic)



Lot 1 Revised Landscape Points

Lot	125,522 sqft.
Building(s)	40,427 sqft.
Required points	150 115 pts
17 Large Trees	34,000 pts
5 Medium Trees	8,000 pts
5 Small Trees	2,500 pts
116 Shrubs	29,000 pts
6,630 Grasses	+ 46,300 pts
TOTAL	137,800 pts
Required points	155,115 pts
Additional Required	17,315 pts

SEE SURPLUS LOTS 1 & 2

Lots 1 & 2 Landscape Points

Lot	130,616 sqft.
Building(s)	16,888 sqft.
Required points	113,628 pts
29 Large Trees	50,000 pts
2 Medium Trees	2,000 pts
50 Shrubs	12,500 pts
8,956 Grasses	+ 89,260 pts
TOTAL	162,060 pts
Required points	113,628 pts
Surplus	48,432 pts

Fisk Land Surveying & Consulting Engineers, Inc.
1022 Main Street, P.O. Box 8154
Rapid City, South Dakota 57702-0154
(605) 342-8154 (Fax) (605) 342-1115 (Cell)
www.fisklandsurvey.com

The information herein is preparatory material and specific to the site, and is not for any other purpose or use. No warranty or guarantee is expressed or implied in any part, for any other purpose or use, except as stated.

Site Plan
Proposed Lot 1 Revised
of Atlantis Subdivision
Section 27, T2N, R8E, B.H.M.
Rapid City, Pennington County, South Dakota

Surveyed by: M.R. BL
Date: 9/11/07
Drawn by: RWF, BL
Date: 7/7/08
Checked by: RWF
Revisions
Project No: 07-09-04
Site Plan