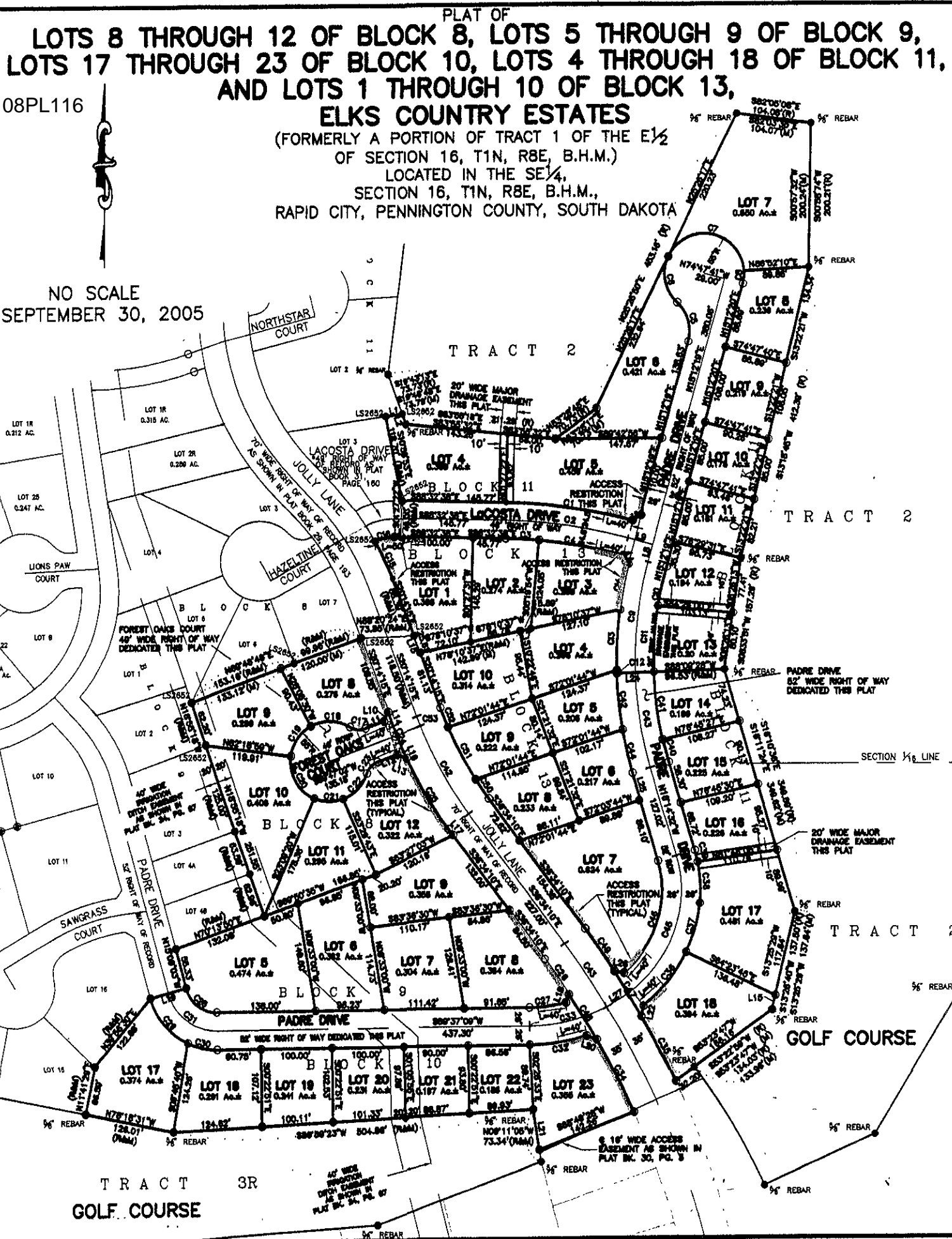


08PL116



NO SCALE  
SEPTEMBER 30, 2005

C:\Projects\1260-1R2004\Copy of PLATSHIT-PADRE.DWG, 8/8/2008 10:13:03 AM



PLAT OF  
**LOTS 8 THROUGH 12 OF BLOCK 8, LOTS 5 THROUGH 9 OF BLOCK 9,  
LOTS 17 THROUGH 23 OF BLOCK 10, LOTS 4 THROUGH 18 OF BLOCK 11,  
AND LOTS 1 THROUGH 10 OF BLOCK 13,**  
**ELKS COUNTRY ESTATES**  
(FORMERLY A PORTION OF TRACT 1 OF THE E $\frac{1}{2}$   
OF SECTION 16, T1N, R8E, B.H.M.)  
LOCATED IN THE SE $\frac{1}{4}$ ,  
SECTION 16, T1N, R8E, B.H.M.,  
RAPID CITY, PENNINGTON COUNTY, SOUTH DAKOTA