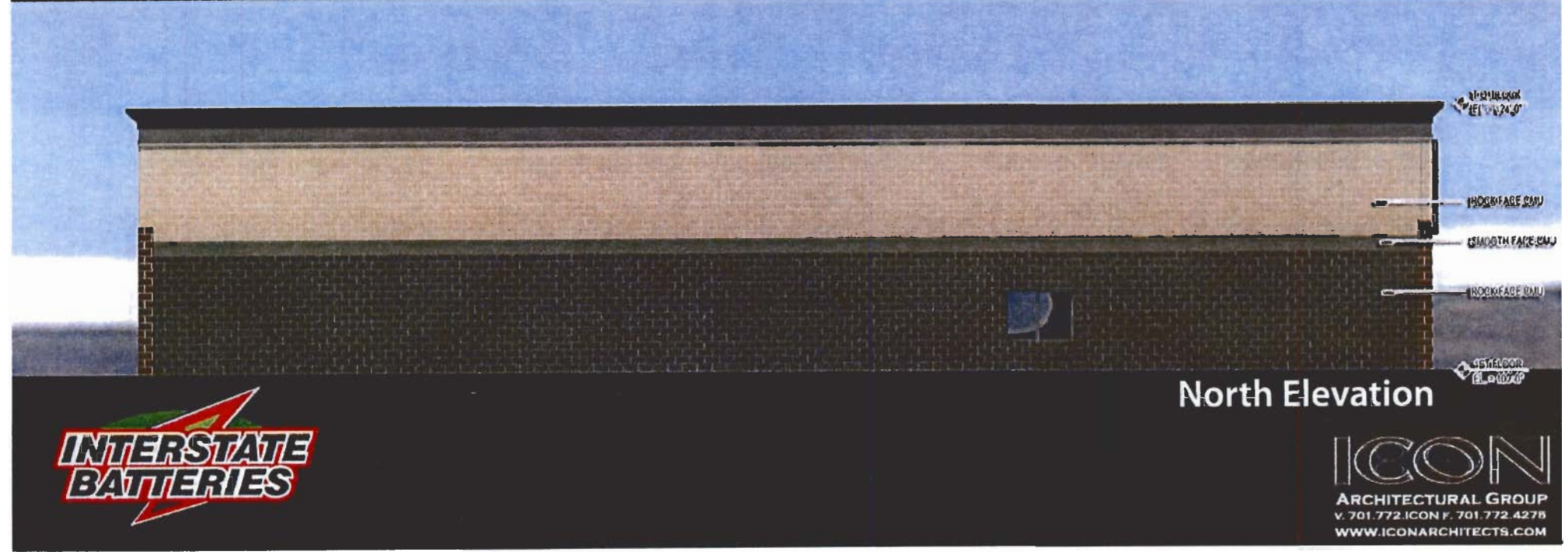




South Elevation



North Elevation



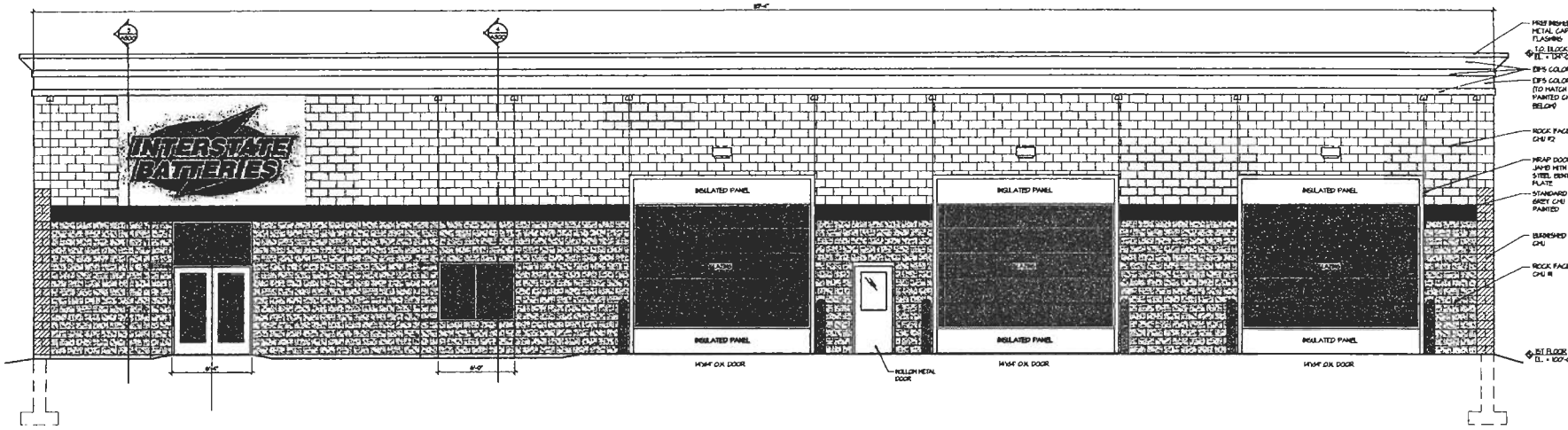


West Elevation



East Elevation

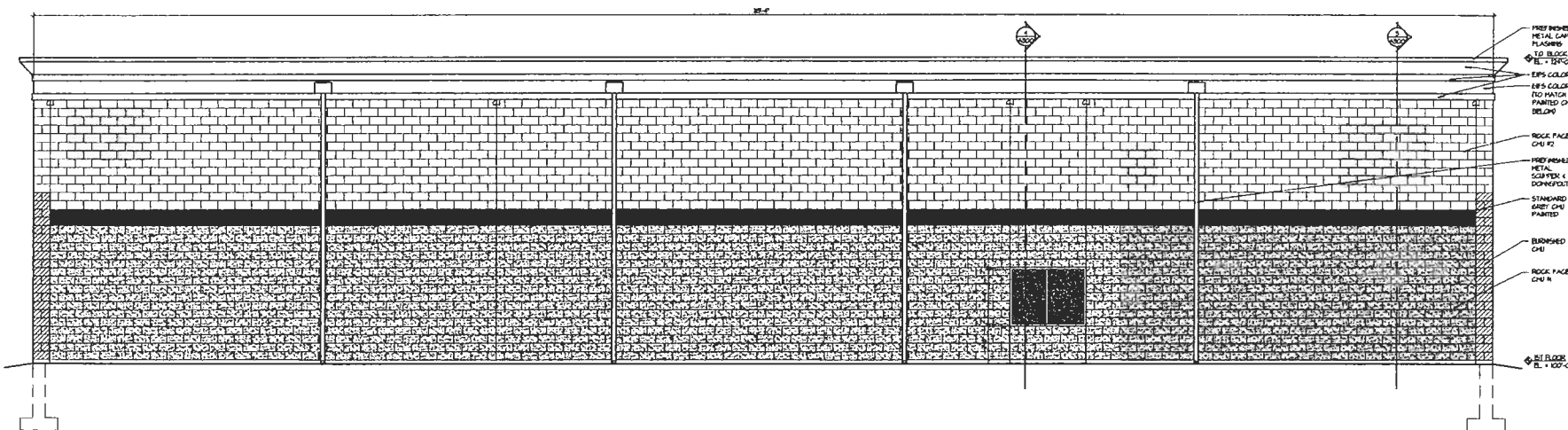




- 1 PRE FINISH METAL CAP & FLASHING TO BRIDGE
- 2 EL. = 107'-0"
- 3 EPS COLOR 1
- 4 EPS COLOR 2
- 5 2"O W/ATCH PAINTED G/4 BELD/4
- 6 ROCK FACE G/4 R2
- 7 HWY DOOR JAMB WITH STEEL CORN PLATE
- 8 STANDARD BRK G/4 PAINTED
- 9 BRUSHED G/4
- 10 ROCK FACE G/4 R
- 11 SI FLOOR EL. = 107'-0"

SIDE ELEVATION
1/4" = 1'-0"

1 A301



- 1 PRE FINISH METAL CAP & FLASHING TO BRIDGE
- 2 EL. = 107'-0"
- 3 EPS COLOR 1
- 4 EPS COLOR 2
- 5 2"O W/ATCH PAINTED G/4 BELD/4
- 6 ROCK FACE G/4 R2
- 7 PRE FINISH METAL SCAFF. & DOWNSPUT
- 8 STANDARD BRK G/4 PAINTED
- 9 BRUSHED G/4
- 10 ROCK FACE G/4 R
- 11 SI FLOOR EL. = 107'-0"

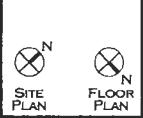
SIDE ELEVATION
1/4" = 1'-0"

2 A301

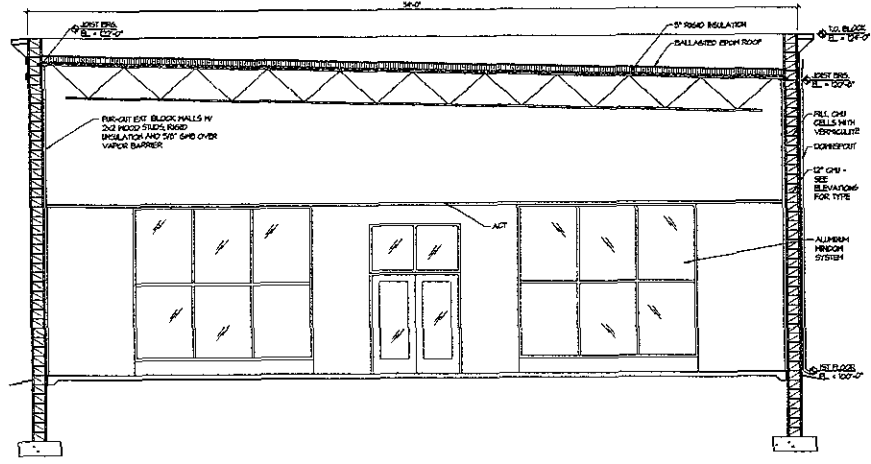


INTERSTATE BATTERIES
AT RUSHMORE CROSSING
 RAPID CITY, SOUTH DAKOTA

REVISION RECORD	
NO.	DATE



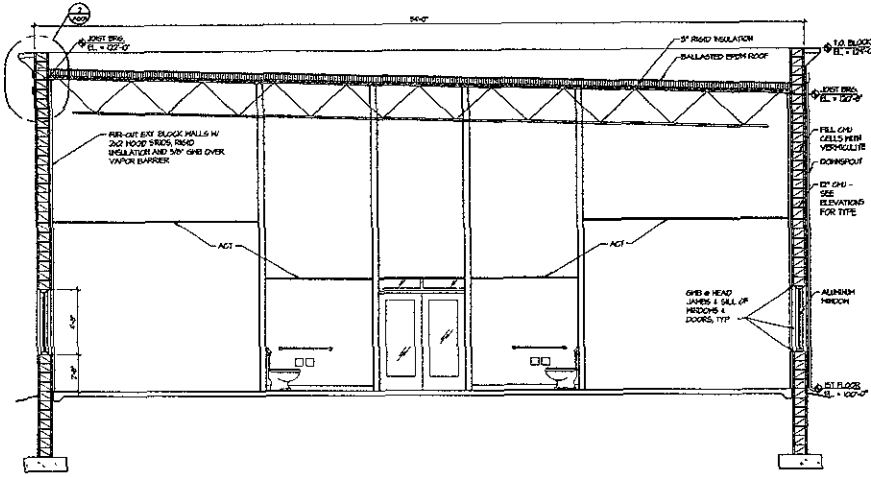
BUILDING ELEVATIONS
 DATE 07/23/08
 SHEET
A301



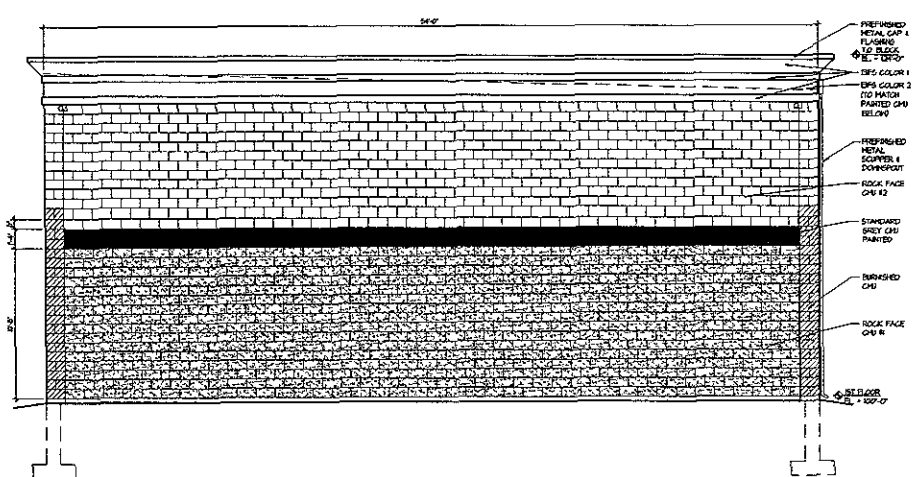
BUILDING SECTION
1/4" = 1'-0"
3
A300



FRONT ELEVATION
1/4" = 1'-0"
1
A300



BUILDING SECTION
1/4" = 1'-0"
4
A300



REAR ELEVATION
1/4" = 1'-0"
2
A300

CON

INTERSTATE BATTERIES
AT RUSHMORE CROSSING

RAPID CITY, SOUTH DAKOTA

REVISION RECORD	
NO.	DATE

SCALE: 1/4" = 1'-0"
DRAWN BY: TMS
DATE: 07/23/08

SITE PLAN

FLOOR PLAN

BUILDING ELEVATIONS & SECTIONS

DATE: 07/23/08

SHEET
A300