

EGLIN STREET EXTENSION

CITY OF RAPID CITY PROJECT NO. ST05-1470 - CIP #50560
 SDDOT PROJECT NO. P 1650(00) - PCN 005Q

95% DESIGN

GRADING, PCC PAVEMENT, CURB & GUTTER, STORM SEWER,
 PAVEMENT MARKINGS, LIGHTING, PERMANENT SIGNING,
 WATER & SANITARY SEWER

RECEIVED

SEP 12 2008

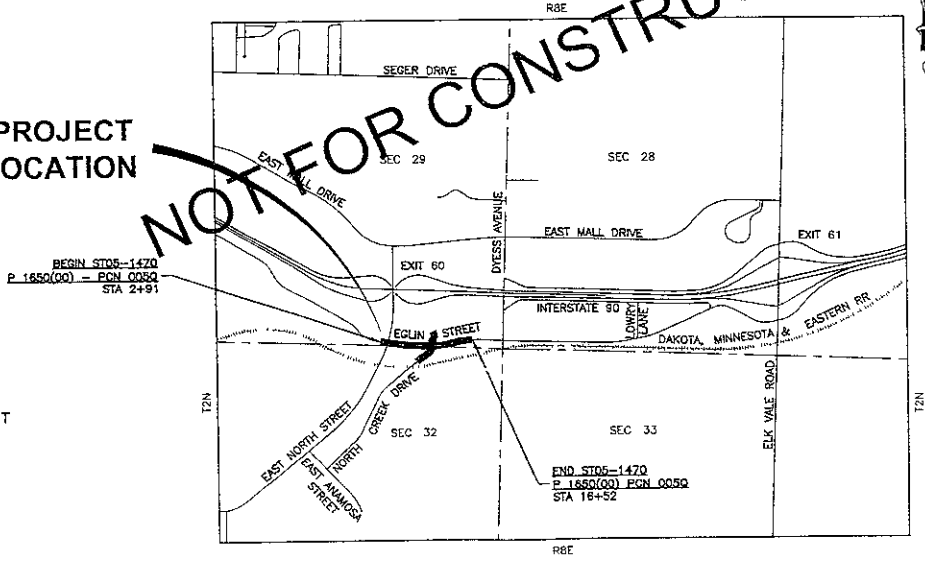
Rapid City Growth
 Management Department

INDEX OF SHEETS

- 1 TITLE SHEET
- 2 LEGEND AND ESTIMATE OF QUANTITIES
- 3-5 GENERAL NOTES
- 6 QUANTITY TABLES
- 7 RIGHT-OF-WAY LAYOUT
- 8 HORIZONTAL ALIGNMENT AND SURVEY CONTROL DATA
- 9-11 TRAFFIC CONTROL PLAN
- 12 GRADING AND EROSION CONTROL LAYOUT AND NOTES
- 13-16 EROSION CONTROL DETAILS
- 17 REMOVALS LAYOUT AND NOTES
- 18-19 TYPICAL GRADING SECTIONS
- 20-21 TYPICAL SURFACING SECTIONS
- 22-27 EGLIN STREET PLAN AND PROFILE
- 28-31 NORTH CREEK DRIVE PLAN AND PROFILE
- 32-34 WATER AND SEWER DETAILS
- 35-36 CATHODIC PROTECTION GENERAL NOTES AND DETAILS
- 37-38 EGLIN STREET CURB & GUTTER LAYOUT
- 39 NORTH CREEK DRIVE CURB & GUTTER LAYOUT
- 40 AIRC ACCESS MODIFICATIONS
- 41-55 SURFACING AND DRAINAGE DETAILS
- 56-57 EGLIN STREET SIGNING AND STRIPING
- 58 NORTH CREEK DRIVE SIGNING AND STRIPING
- 59-62 SIGNING AND STRIPING DETAILS
- E1-E2 ELECTRICAL NOTES
- E3-E7 ELECTRICAL LAYOUT
- E8-E13 ELECTRICAL DETAILS
- X1 PIPE SECTION
- X2-X6 EGLIN STREET CROSS SECTIONS
- X7-X8 NORTH CREEK DRIVE CROSS SECTIONS

PROJECT LOCATION

NOT FOR CONSTRUCTION



I, JOHN R. VAN BEEK, CERTIFY THAT I HAVE READ AND UNDERSTAND THE PROVISIONS CONTAINED IN THE CITY OF RAPID CITY STANDARD SPECIFICATIONS FOR PUBLIC WORKS CONSTRUCTION, CURRENT EDITION AND THE CITY OF RAPID CITY'S ADOPTED DESIGN CRITERIA MANUALS

JOHN R. VAN BEEK, PE

CIVIL PLANS PREPARED BY

Ferber Engineering Company, Inc.

Civil Engineering • Water Resources • Transportation • Land Surveying
 729 East Watertown St, Rapid City, SD 57701 • Phone: (605) 343-3311
 www.FerberEngineering.com

ELECTRICAL PLANS PREPARED BY

WPE WEST PLAINS ENGINEERING, INC.

1750 RAND ROAD • RAPID CITY, SD 57702
 PHONE (605) 348-7455 • FAX (605) 348-9445
 www.westplainsengineering.com
 RAPID CITY SD • SIOUX FALLS SD • CASPER WY • CEDAR RAPIDS IA

ONE CALL
 BEFORE DIGGING
 1-800-781-7474

SITE MAP NOT TO SCALE

EGLIN STREET PLAN

STORM SEWER NOTES

STA 3+25.2 - 73.5' RT TO STA 3+35.6 - 82.6' RT
 INSTALL CLASS II RIPRAP 10 CY DRAINAGE FABRIC 20 SY
 STA 3+32.1 - 53.6' RT TO STA 3+44.0 - 47.6' LT
 INSTALL 102 LF - 24" RC PIPE WITH SLOPED END
 STA 3+44.0 - 47.6' LT TO STA 3+44.9 - 55.4' LT
 INSTALL 6 LF - GASKETED 24" RC PIPE
 STA 3+44.9 - 55.4 LT
 INSTALL 4'x4' JUNCTION BOX.
 STA 3+44.9 - 55.4' LT TO STA 3+46.3 - 66.8' LT
 INSTALL 10 LF - GASKETED 30" RC PIPE.
 STA 3+46.3 - 66.8' LT TO STA 3+47.5 - 77.5' LT
 INSTALL 12 LF - 30" RC PIPE WITH SLOPED END.
 STA 3+43.4 - 84.8' LT TO STA 3+62.2 - 219.2' LT
 INSTALL CLASS II RIPRAP 130 CY DRAINAGE FABRIC 198 SY
 STA 3+44.9 - 55.4' LT TO STA 3+64.9 - 52.6' LT
 INSTALL 18 LF - GASKETED 24" RC PIPE.
 STA 3+64.9 - 52.6' LT TO STA 4+81.1 - 35.6' LT
 INSTALL 116 LF - 24" RC PIPE.
 STA 4+81.1 - 35.6' LT
 INSTALL 3'x4' TYPE "B" INLET
 STA 4+61.1 - 35.6' LT TO STA 5+12.5 - 36.8' LT
 INSTALL 26 LF - 24" RC PIPE.
 STA 5+12.5 - 36.8' LT
 INSTALL 3'x10' TYPE "E" INLET

STORM SEWER NOTES

STA 5+12.5 - 36.8' LT TO STA 5+12.3 - 7.2' LT
 INSTALL 30 LF - 18" RC PIPE.
 STA 5+12.3 - 7.2' LT TO STA 5+12.2 - 22.3' RT
 INSTALL 28 LF - GASKETED 18" RC PIPE.
 STA 5+12.2 - 22.3' RT
 INSTALL 2'x3' TYPE "B" INLET
 STA 5+12.5 - 36.8' LT TO STA 5+43.7 - 33.1' LT
 INSTALL 26 LF - 18" RC PIPE
 STA 5+43.7 - 33.1' LT
 INSTALL 2'x3' TYPE "B" INLET
 STA 5+43.7 - 33.1' LT
 INSTALL 2'x3' TYPE "B" INLET

STORM SEWER NOTES:

STA 5+43.7 - 33.1' LT TO STA 6+61.6 - 31.7' LT
 INSTALL 114 LF - 18" RC PIPE.
 STA 6+61.6 - 31.7' LT
 INSTALL 2'x3' TYPE "B" INLET.
 STA 6+61.6 - 31.7' LT TO STA 6+78.9 - 0.7' LT
 INSTALL 36 LF - GASKETED 18" RC PIPE.
 STA 6+78.9 - 0.7' LT TO STA 6+89.5 - 19.7' RT
 INSTALL 24 LF - 18" RC PIPE
 STA 6+89.5 - 19.7' RT
 INSTALL 2'x3' TYPE "B" INLET
 STA 6+89.5 - 19.7' RT TO STA 6+89.8 - 27.8' RT
 INSTALL 8 LF - 12" RC PIPE
 STA 6+89.8 - 27.8' RT
 INSTALL 12" 7.5' RCP VERTICAL BEND
 STA 6+89.9 - 28.8' RT
 INSTALL 12" 7.5' RCP VERTICAL BEND AND CONNECT TO EXISTING

WATER NOTES

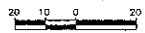
STA 3+15.3 - 9.7' RT
 EXTEND VALVE BOX (RAISE 1.3').
 STA 3+53.4 - 66.2' LT
 ADJUST FIRE HYDRANT AND AUXILIARY VALVE (RAISE 3.6')
 STA 3+66.1 - 19.3' RT
 EXTEND VALVE BOX (RAISE 3.4')

SANITARY SEWER NOTES

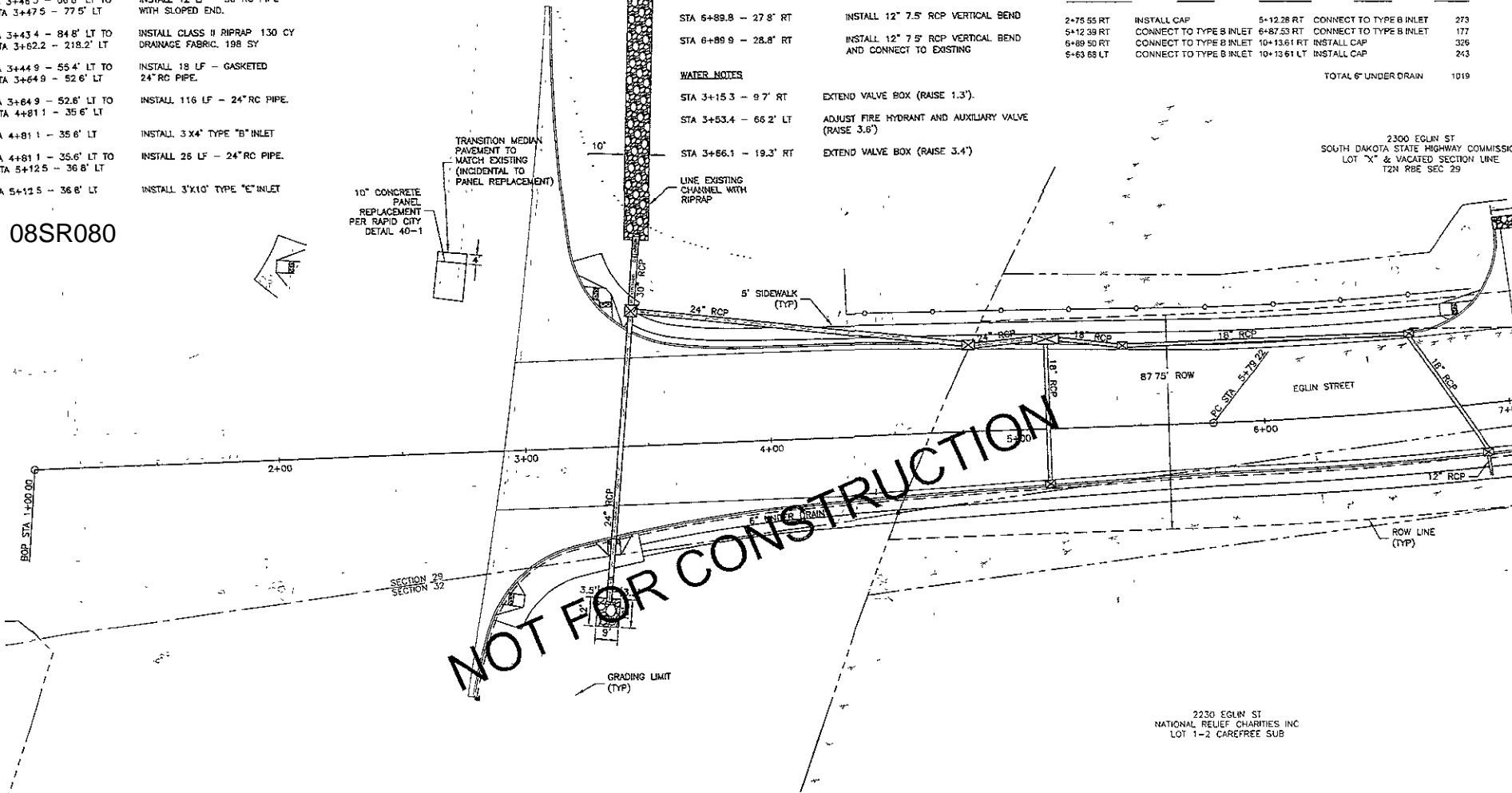
STA 5+71.6 - 9.8' RT
 INSTALL ADDITIONAL BARREL SECTION TO ADJUST SANITARY SEWER MANHOLE RIM (RAISE 1.6')

TABLE OF 6" UNDER DRAIN

FROM STATION	REMARK	TO STATION	REMARK	LENGTH
2+78.55 RT	INSTALL CAP	5+12.28 RT	CONNECT TO TYPE B INLET	273
5+12.38 RT	CONNECT TO TYPE B INLET	6+87.53 RT	CONNECT TO TYPE B INLET	177
6+89.50 RT	CONNECT TO TYPE B INLET	10+13.61 RT	INSTALL CAP	326
6+63.65 LT	CONNECT TO TYPE B INLET	10+13.61 LT	INSTALL CAP	243
TOTAL 6" UNDER DRAIN				1019



08SR080



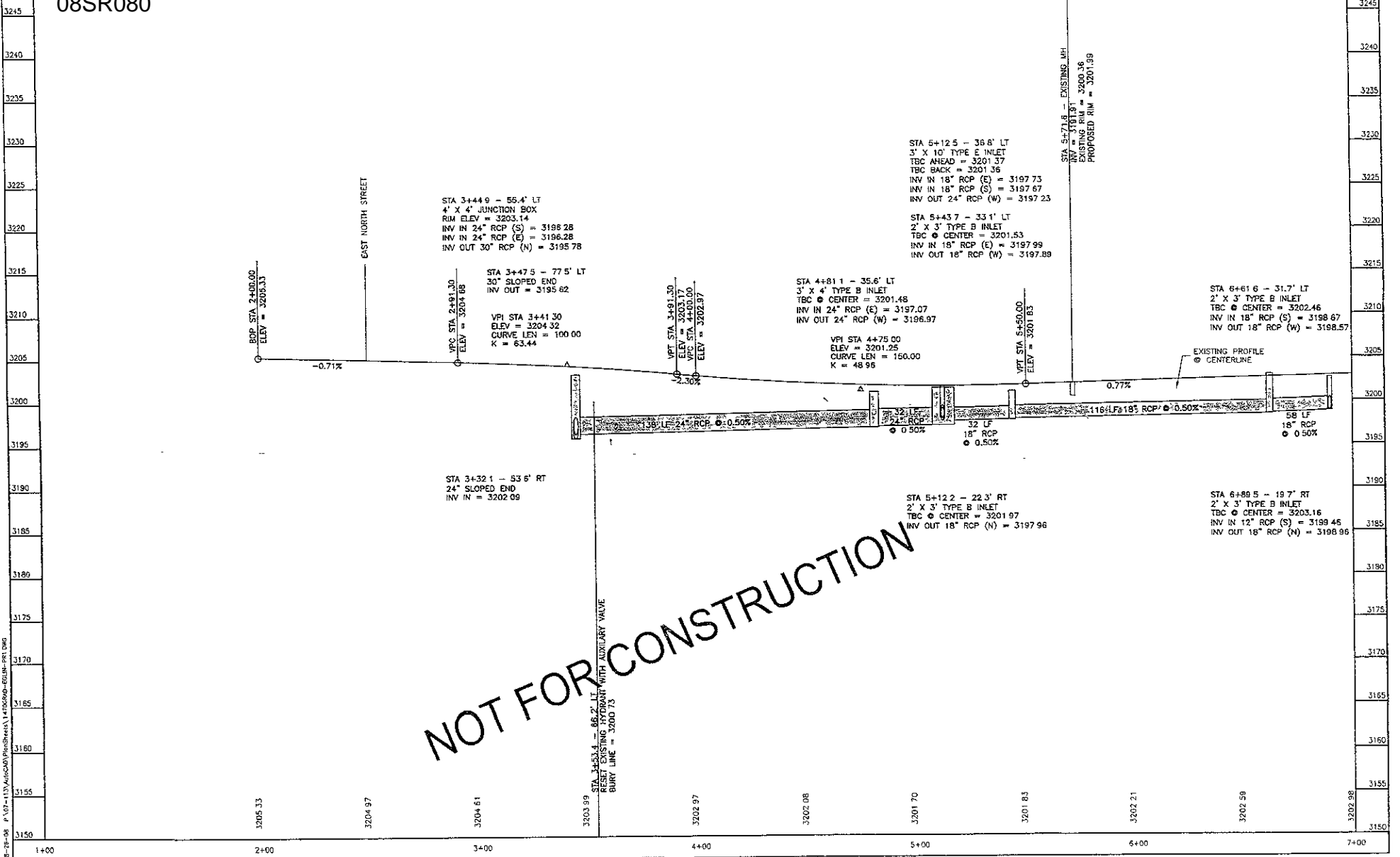
2300 EGLIN ST
 SOUTH DAKOTA STATE HIGHWAY COMMISSION
 LOT "X" & VACATED SECTION LINE
 T2N R8E SEC 29

2230 EGLIN ST
 NATIONAL RELIEF CHARITIES INC
 LOT 1-2 CAREFREE SUB

08SR080



PLOTTING DATE: 08-26-08



NOT FOR CONSTRUCTION

08-26-08 P:\07-113\AUG08\PlanSheet\1470SR080-83LINE-PR1.DWG

EGLIN STREET PLAN



PROJECT	EGLIN STREET EXTENSION	SHEET NO.	24	TOTAL SHEETS	83
	ST05-1470 - CIP #50560				

PLOTTING DATE: 09-11-08

WATER NOTES

- TA 7+52.0 - 34.1' LT
- TA 7+62.6 - 13.0' LT
- TA 10+38.9 - 13.0' LT
- TA 10+38.9 - 13.0' LT TO STA 10+38.9 - 35.2' LT
- TA 10+38.9 - 35.2' LT
- TA 11+50.5 - 27.6' RT
- TA 11+53.9 - 23.5' RT
- TA 11+67.1 - 19.8' RT

- ADJUST FIRE HYDRANT AND AUXILIARY VALVE (RAISE 2.0')
- EXTEND VALVE BOX (RAISE 1.6')
- INSTALL 12"YS" TAPPING TEE WITH VALVE AND THRUST BLOCK.
- INSTALL 22 LF - 6" PVC WATER MAIN
- INSTALL FIRE HYDRANT WITH AUXILIARY VALVE AND THRUST BLOCK.
- EXTEND VALVE BOX (RAISE 3.7')
- REMOVE FIRE HYDRANT AND AUXILIARY VALVE AND SALVAGE TO OWNER. INSTALL PLUG AND THRUST BLOCK PER STANDARD SPECIFICATIONS
- EXTEND VALVE BOX (RAISE 2.2').

SANITARY SEWER NOTES

- STA 8+35.4 - 0.0' RT TO STA 8+35.4 - 40.0' RT
- STA 8+40.4 - 0.4' RT
- STA 11+09.8 - 1.7' RT
- INSTALL 40 LF -- 4" PVC SANITARY SEWER SERVICE CAP END OF PIPE AND MARK WITH POST.
- INSTALL ADDITIONAL BARREL SECTION TO ADJUST SANITARY SEWER MANHOLE RIM (RAISE 3.8')
- INSTALL ADDITIONAL BARREL SECTION TO ADJUST SANITARY SEWER MANHOLE RIM (RAISE 6.1')
- INSTALL CLASS II RIPRAP 14 CY. DRAINAGE FABRIC. 27 SY.

RIPRAP NOTES

- STA 7+02.8 - 75.9' LT TO STA 7+33.7 - 75.9' LT

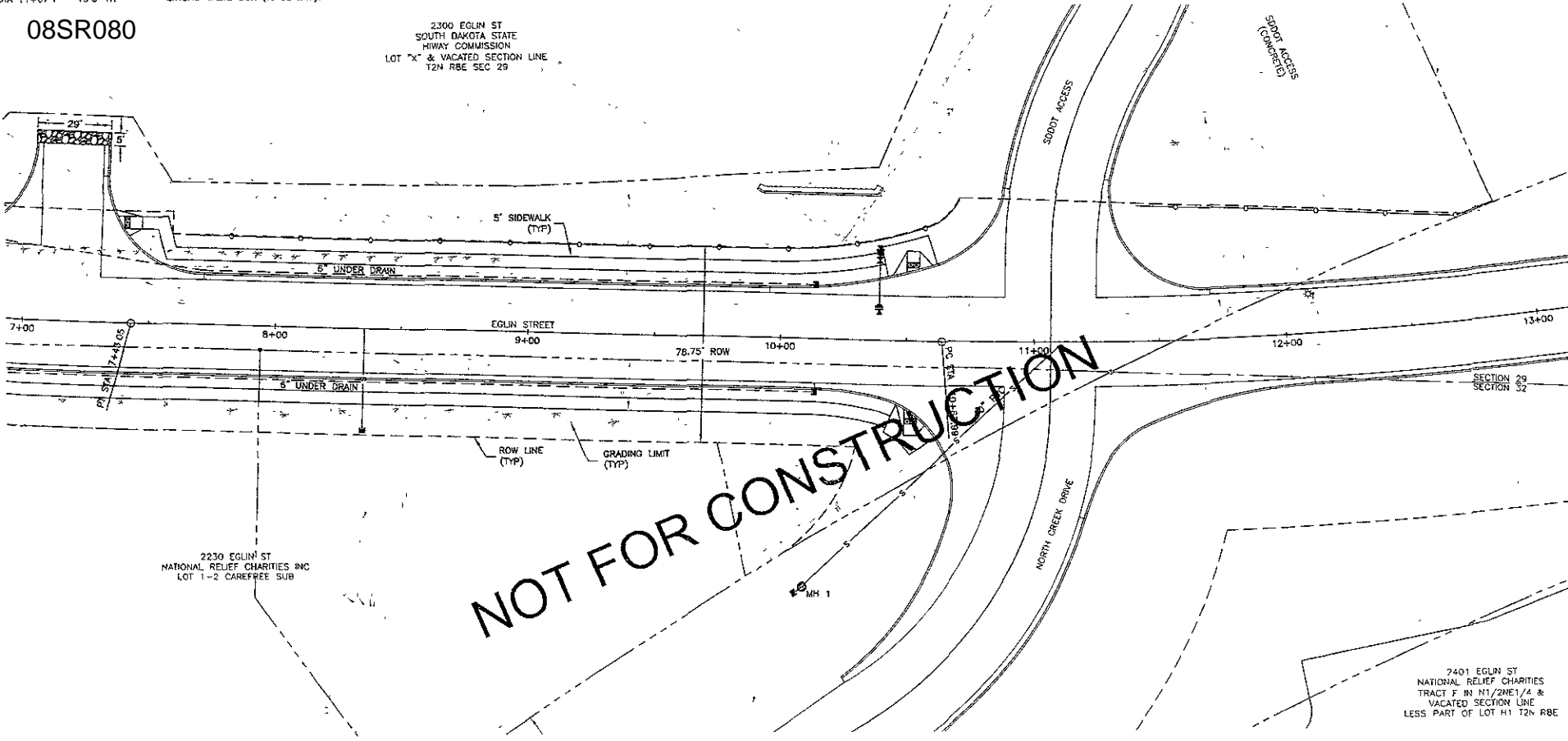
PRE-PACKAGED ZINC ANODE SCHEDULE

STATION	OFFSET (FT)	MINIMUM BARE WEIGHT (LBS)	FEATURE
10+38.9	13.0 LT	30	12" X 6" TAPPING TEE WITH VALVE
10+38.9	35.2 LT	45	FIRE HYDRANT ASSEMBLY



08SR080

2300 EGLIN ST
SOUTH DAKOTA STATE
HIGHWAY COMMISSION
LOT "X" & VACATED SECTION LINE
T2N R8E SEC 29



NOT FOR CONSTRUCTION

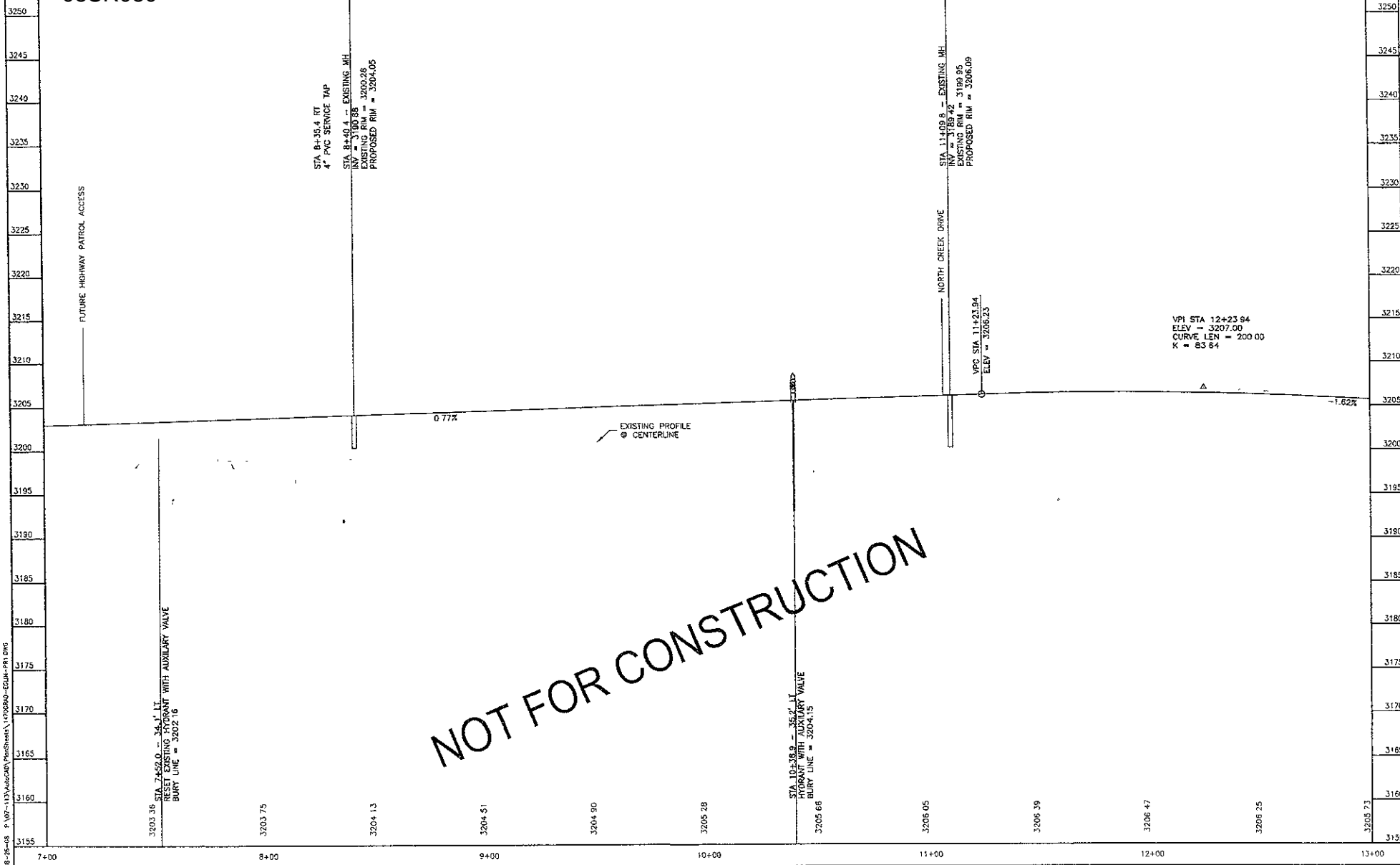
2230 EGLIN ST
NATIONAL RELIEF CHARITIES INC
LOT 1-2 CAREFREE SUB

2401 EGLIN ST
NATIONAL RELIEF CHARITIES
TRACT F IN N1/2NE1/4 &
VACATED SECTION LINE
LESS PART OF LOT H1 T2N R8E

08SR080



PLOTTING DATE: 08 26 08



08-26-08 8:07:11 AM J:\AutoCAD\Projects\08080-EGU-PR1.DWG

08SR080



Ferber
Engineering
Company, Inc.

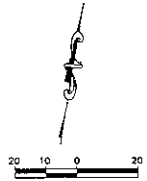


PROJECT
EGLIN STREET EXTENSION
ST05 1470 - CIP #50960

SHEET NO
26

TOTAL SHEETS
83

PLOTTING DATE: 09-11-08



2300 EGLIN ST
SOUTH DAKOTA STATE
HIGHWAY COMMISSION
LOT "X" & VACATED SECTION LINE
T2N R8E SEC 29

GRADING LIMIT
(TYP)

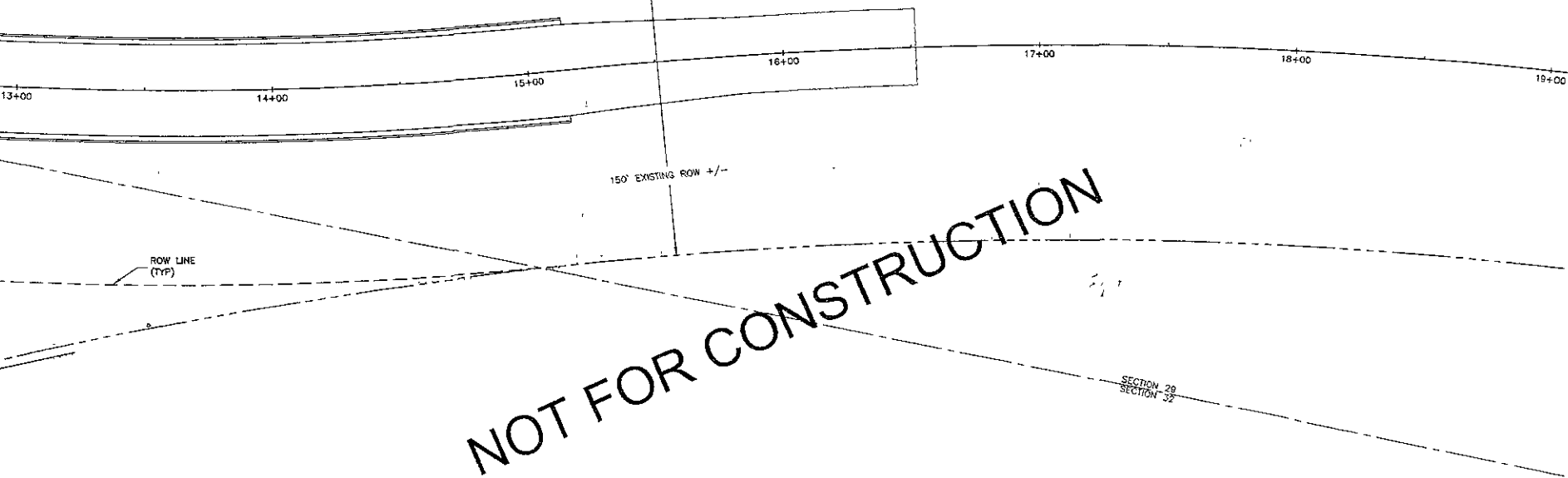
ROW LINE
(TYP)

150' EXISTING ROW +/-

NOT FOR CONSTRUCTION

2401 EGLIN ST
NATIONAL RELIEF CHARITIES
TRACT F IN N1/2NE1/4 & VACATED SECTION LINE
LESS PART OF LOT H1 T2N R8E

SECTION 29
SECTION 32



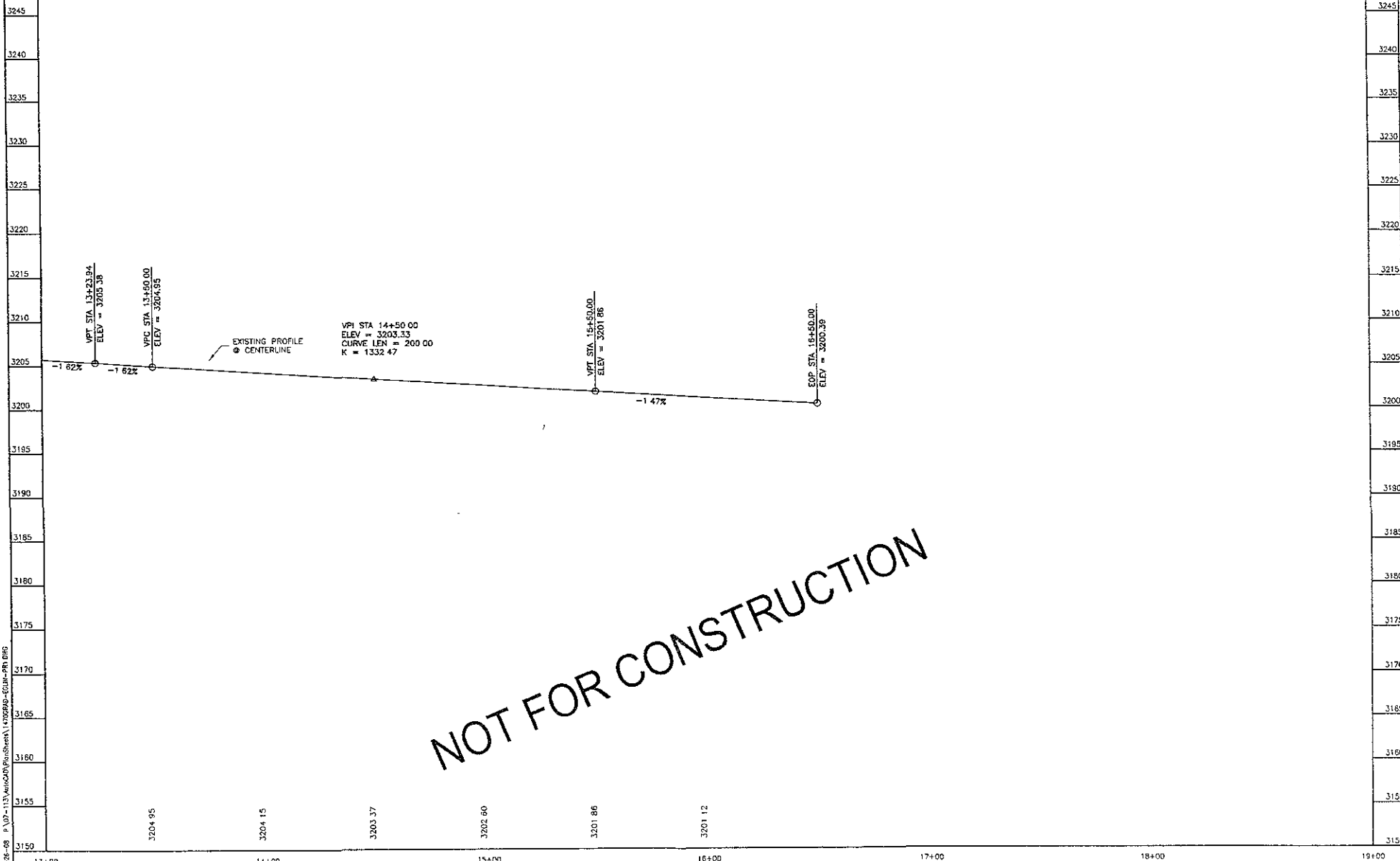
EGLIN STREET PROFILE

08SR080



PROJECT	SHEET NO	TOTAL SHEETS
EGLIN STREET EXTENSION ST05 1470 CIP #50560	27	83

PLOTTING DATE: 08 26 08



NOT FOR CONSTRUCTION

08-26-08 P:\07-113\AutoCAD\PlanSheet\1470SR080-EGLIN-PR1.DWG

NORTH CREEK DRIVE PLAN



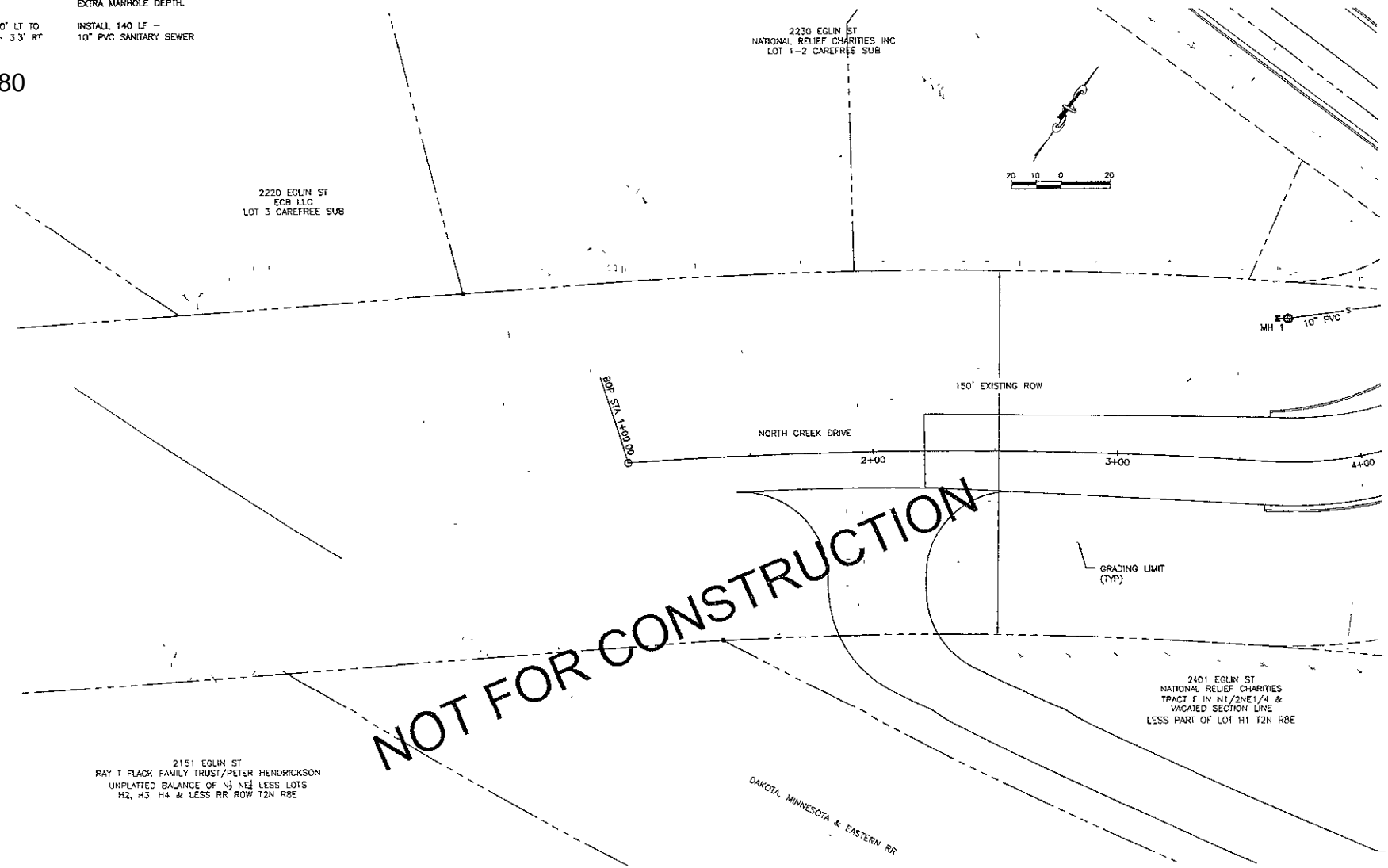
PROJECT	SHEET NO.	TOTAL SHEETS
EGLIN STREET EXTENSION ST05 1470 - CIP #50960	28	83

PLOTTING DATE: 09-9-08

SANITARY SEWER NOTES:

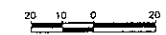
- STA 3+62.9 - 58.9' LT INSTALL 10" CAP
- STA 3+62.9 - 58.9' LT TO INSTALL 4 LF -
- STA 3+69.5 - 59.0' LT 10" PVC SANITARY SEWER
- STA 3+69.5 - 59.0' INSTALL SANITARY SEWER
- MANHOLE 1 - 1.3.3 WF
- EXTRA MANHOLE DEPTH.
- STA 3+69.5 - 59.0' LT TO INSTALL 140 LF -
- STA 5+35.5 - 3.3' RT 10" PVC SANITARY SEWER

08SR080



2220 EGLIN ST
ECB LLC
LOT 3 CAREFREE SUB

2230 EGLIN ST
NATIONAL RELIEF CHARITIES INC
LOT 1-2 CAREFREE SUB



MH 1
10" PVC S

150' EXISTING ROW

NORTH CREEK DRIVE

2+00

3+00

4+00

GRADING LIMIT
(TYP)

2401 EGLIN ST
NATIONAL RELIEF CHARITIES
TRACT F IN N1/2NE1/4 &
VACATED SECTION LINE
LESS PART OF LOT H1 T2N R8E

2151 EGLIN ST
RAY T FLACK FAMILY TRUST/PETER HENDRICKSON
UNPLATED BALANCE OF N1/2 NE1/4 LESS LOTS
H2, H3, H4 & LESS RR ROW T2N R8E

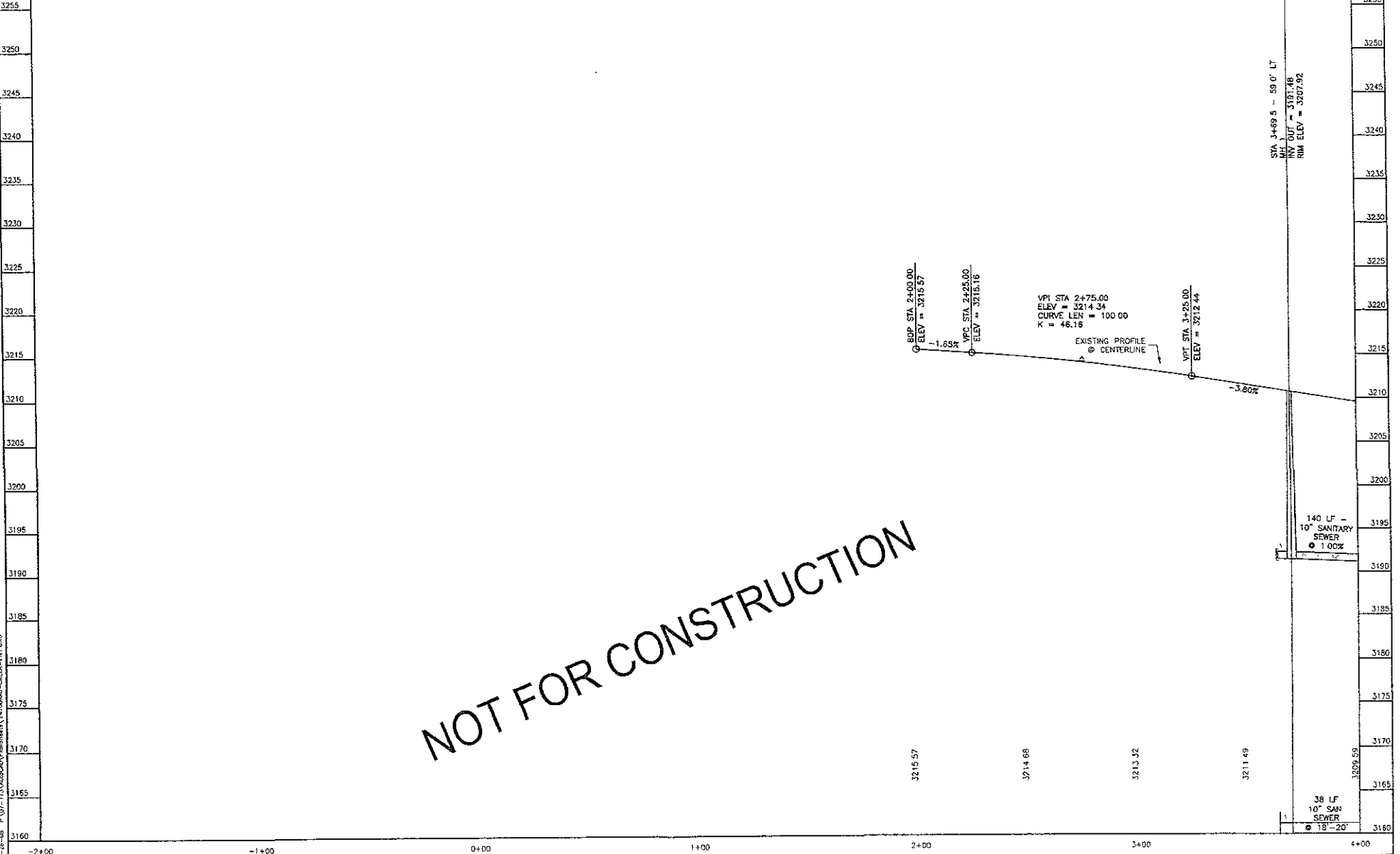
DAKOTA, MINNESOTA & EASTERN RR

NOT FOR CONSTRUCTION

08SR080



PLOTTING DATE: 08 26-08



NOT FOR CONSTRUCTION

STA. 3+69.5 - 59' 0" LT
INV OUT = 3187.48
RIM ELEV = 3207.92

VPI STA 2+75.00
ELEV = 3214.34
CURVE LEN = 100.00
K = 46.15

140 LF -
10" SANITARY
SEWER
@ 1.00%

38 LF
10" SAN
SEWER
@ 1.8' - 2.0'

BOP STA 2+00.00
ELEV = 3215.57

VFC STA 2+25.00
ELEV = 3215.16

VIT STA 3+25.00
ELEV = 3212.44

EXISTING PROFILE
@ CENTERLINE

-1.65%

-3.80%

3215.57

3214.88

3213.92

3211.49

3209.59

-2+00 -1+00 0+00 1+00 2+00 3+00 4+00

NORTH CREEK DRIVE PLAN



PROJECT
EGLIN STREET EXTENSION
ST05-1470 - CIP #50590

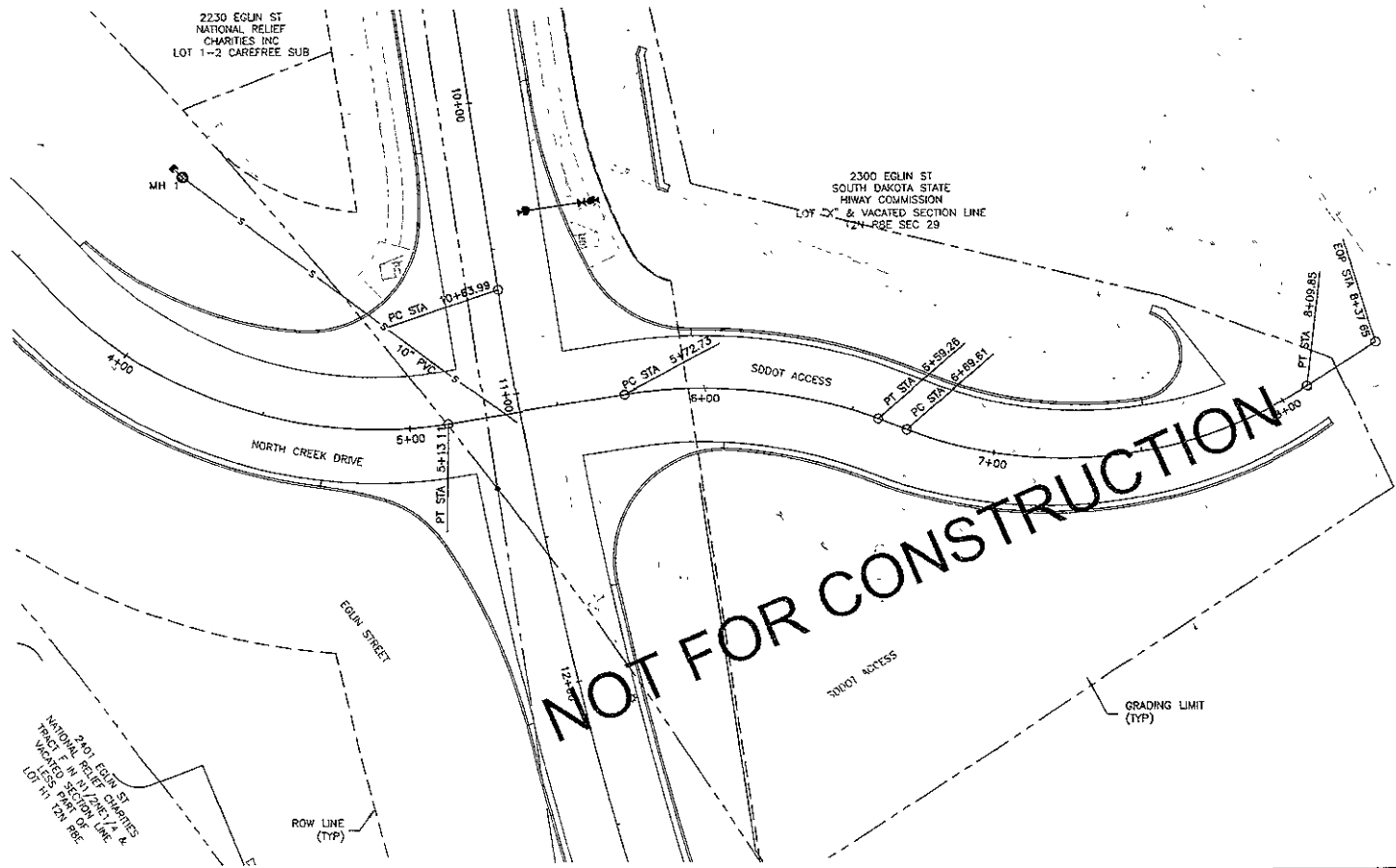
SHEET NO.	TOTAL SHEETS
30	83

PLOTTING DATE: 09-9-08

SANITARY SEWER NOTES

STA 5+35.5 - 3.3' RT CONNECT TO EXISTING MH
RECONSTRUCT MH INVERT

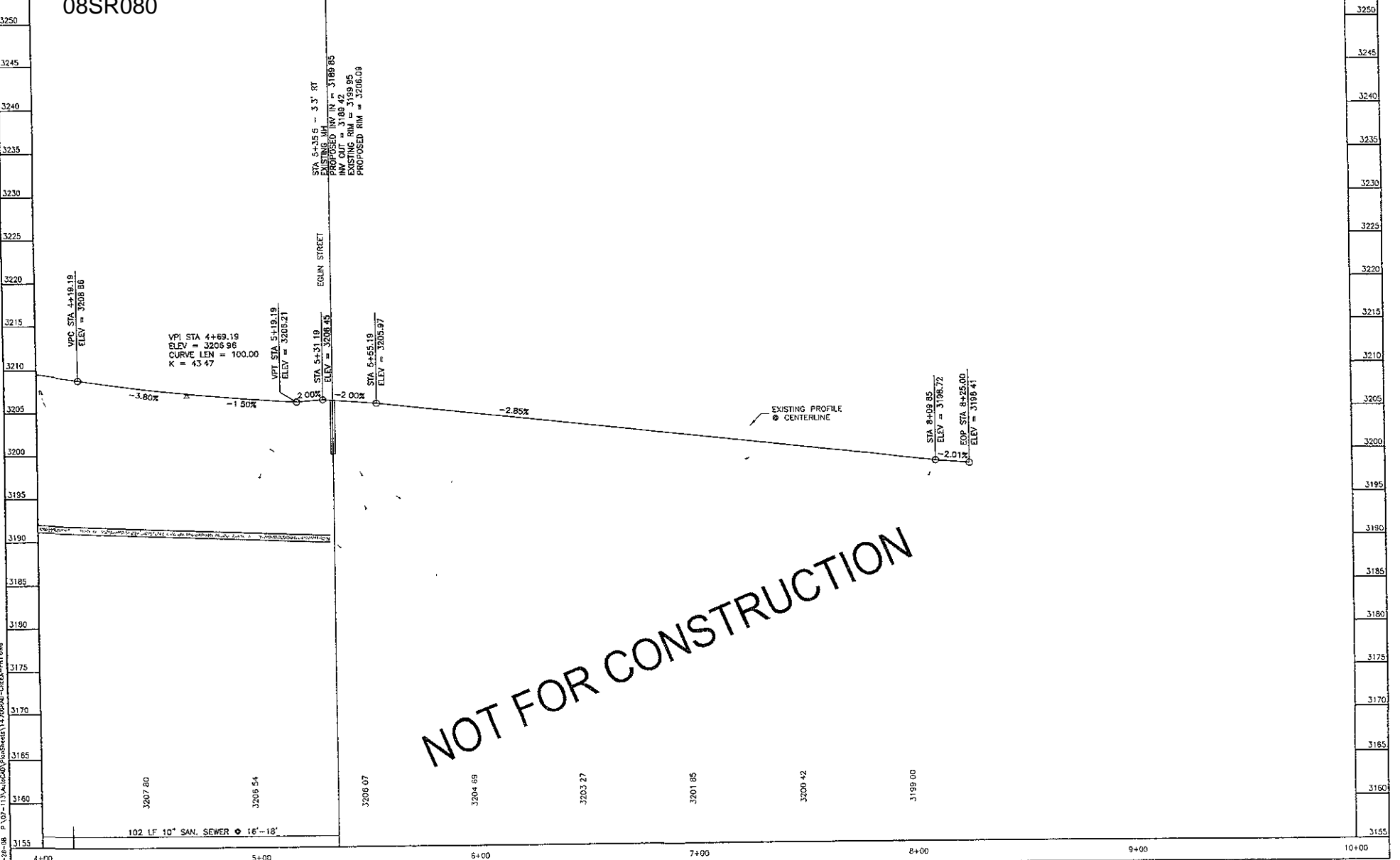
08SR080



08SR080



PLOTTING DATE: 06-26-08



3250
3245
3240
3235
3230
3225
3220
3215
3210
3205
3200
3195
3190
3185
3180
3175
3170
3165
3160
3155

3250
3245
3240
3235
3230
3225
3220
3215
3210
3205
3200
3195
3190
3185
3180
3175
3170
3165
3160
3155

4+00 5+00 6+00 7+00 8+00 9+00 10+00

102 LF 10" SAN. SEWER 16"-18"

3207.80

3206.54

3206.07

3204.89

3203.27

3201.85

3200.42

3199.00