

08PD050

5.04 Ac.



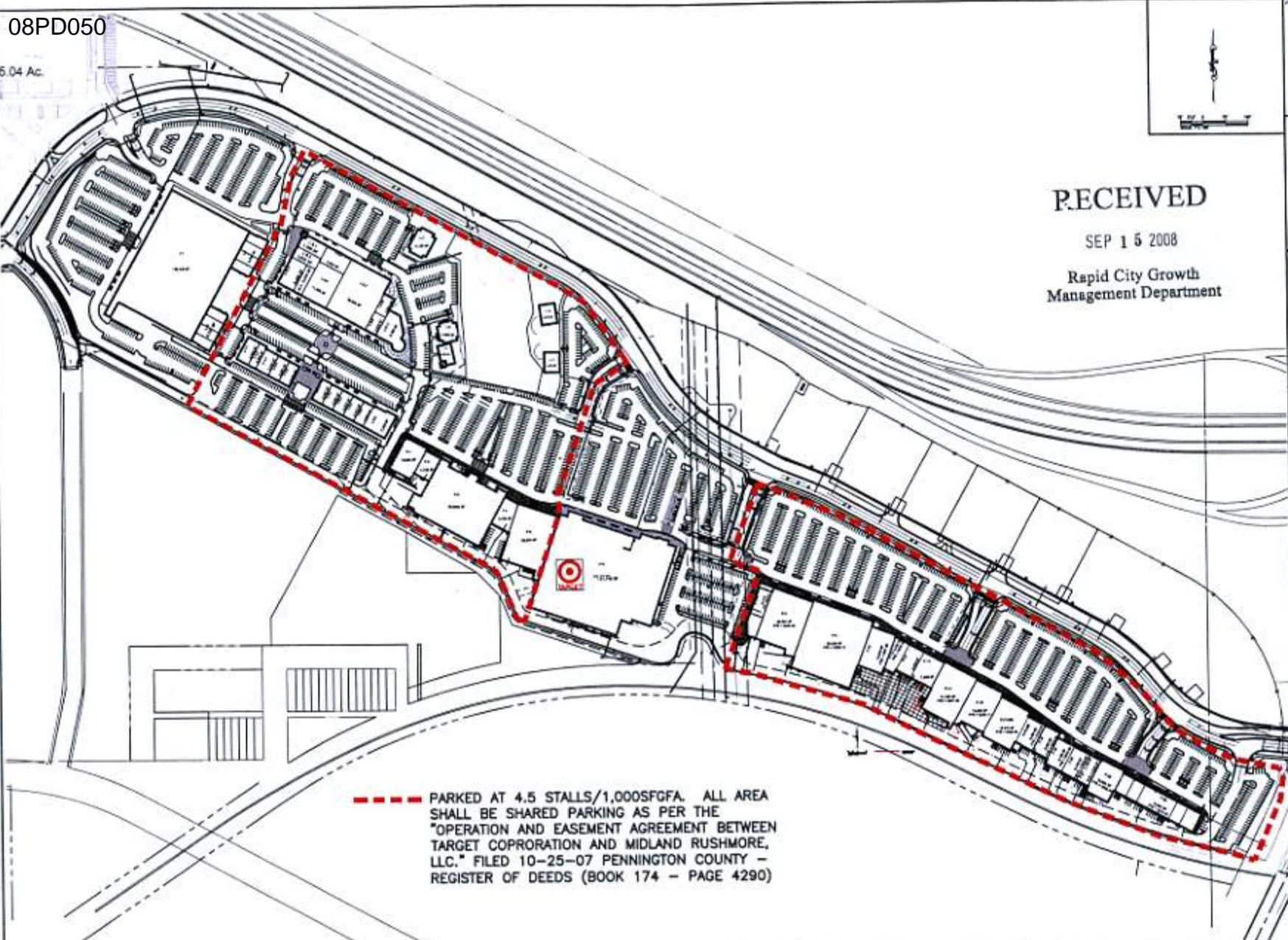
RECEIVED

SEP 15 2008

Rapid City Growth
Management Department

PRELIMINARY
FOR REVIEW ONLY

| | | |
|-----------------------|-------------|------------|
| Project No. 08PD050 | Designed By | Drawn By |
| Checked By | Scale | Issue Date |
| Approved By | Author | Disc |
| DATE PLOTTED: 9/15/08 | | |



--- PARKED AT 4.5 STALLS/1,000SF/GFA. ALL AREA SHALL BE SHARED PARKING AS PER THE "OPERATION AND EASEMENT AGREEMENT BETWEEN TARGET CORPORATION AND MIDLAND RUSHMORE, LLC." FILED 10-25-07 PENNINGTON COUNTY - REGISTER OF DEEDS (BOOK 174 - PAGE 4290)

SCHEEL'S STORE
RUSHMORE CROSSING

SOFT POWER PARKING
PCD MAJOR AMENDMENT