



INDUSTRIAL ROAD

AUG 11 2008

Rapid City Growth



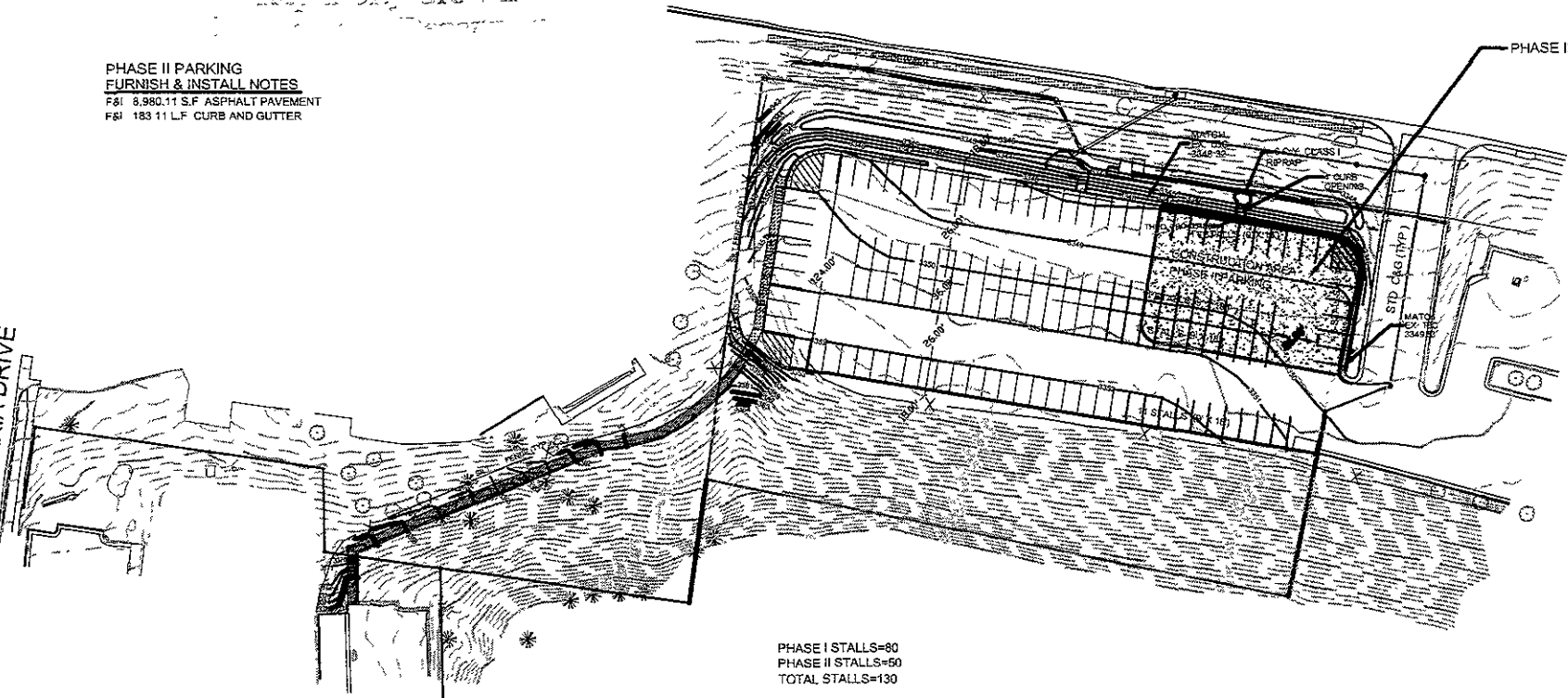
SCALE: NTS

PHASE II PARKING  
 FURNISH & INSTALL NOTES  
 F&I 9,980.11 S.F. ASPHALT PAVEMENT  
 F&I 183.11 LF. CURB AND GUTTER

ANNA MARIA DRIVE

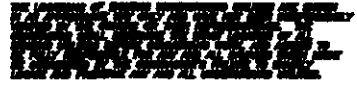
5TH STREET

PHASE II PARKING

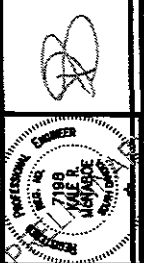


PHASE I STALLS=80  
 PHASE II STALLS=50  
 TOTAL STALLS=130

NOTES:  
 1. SEE SHEET 1730.01 FOR PHASE I NOTES.  
 2. THE SHOWN STALLS ARE FOR PHASE II ONLY.  
 3. SEE SHEET 1730.02 FOR PHASE I NOTES.



**SPERLICH**  
 Consulting, Inc.  
 1101 West 10th Street, Suite 100  
 Rapid City, SD 57701  
 Phone: 605-343-1100  
 Fax: 605-343-1101  
 www.sperlich.com



DATE	REVISION
5/22/08	RELOCATION OF PROPOSED SIDEWALK, ADDITION OF 2 SETS OF STAIRS
5/22/08	PARKING LOT ELEV. & BRANNING

LEGAL DESCRIPTION:  
 PART OF TRACT 40, SECTION 10, T14N, R10W, B1E, SD 57701, BLACK HILLS SURGERY CENTER SOUTH PARKING LOT

SUBMITTED BY: ST  
 DRAWN BY: DM

**PHASE II**  
**BLACK HILLS SURGERY CENTER**  
 SOUTH PARKING LOT

C:\Projects\1730\PHASE 2.dwg, 8/29/2008 9:27:40 AM