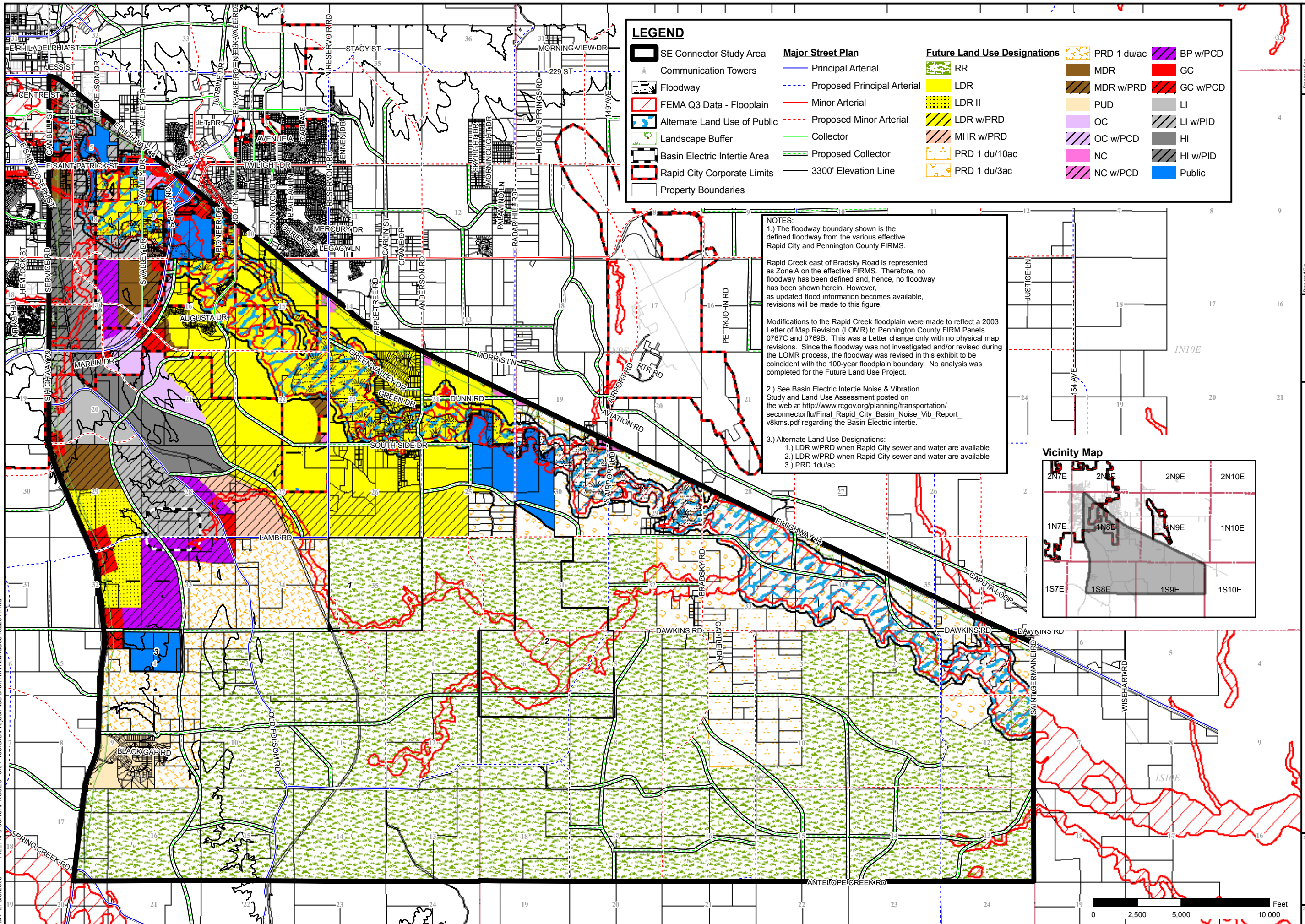


DATE: 8/6/2008 FILE: \\fe-server\PROJECTS\04-103\GIS\ProjectFiles\Draft11\17_LandUse_102207.mxd



LEGEND

- SE Connector Study Area
- Communication Towers
- Floodway
- FEMA Q3 Data - Floodplain
- Alternate Land Use of Public
- Landscape Buffer
- Basin Electric Intertie Area
- Rapid City Corporate Limits
- Property Boundaries

- Major Street Plan**
- Principal Arterial
 - Proposed Principal Arterial
 - Minor Arterial
 - Proposed Minor Arterial
 - Collector
 - Proposed Collector
 - 3300' Elevation Line

- Future Land Use Designations**
- RR
 - LDR
 - LDR II
 - LDR w/PRD
 - MHR w/PRD
 - PRD 1 du/10ac
 - PRD 1 du/3ac
 - BP w/PCD
 - GC
 - GC w/PCD
 - LI
 - LI w/PID
 - HI
 - HI w/PID
 - Public

NOTES:

1.) The floodway boundary shown is the defined floodway from the various effective Rapid City and Pennington County FIRMS.

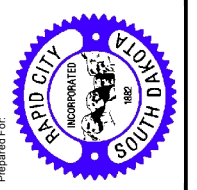
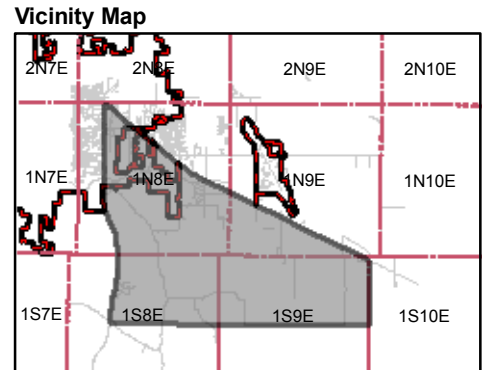
Rapid Creek east of Bradsky Road is represented as Zone A on the effective FIRMS. Therefore, no floodway has been defined and, hence, no floodway has been shown herein. However, as updated flood information becomes available, revisions will be made to this figure.

Modifications to the Rapid Creek floodplain were made to reflect a 2003 Letter of Map Revision (LOMR) to Pennington County FIRM Panels 0767C and 0769B. This was a Letter change only with no physical map revisions. Since the floodway was not investigated and/or revised during the LOMR process, the floodway was revised in this exhibit to be coincident with the 100-year floodplain boundary. No analysis was completed for the Future Land Use Project.

2.) See Basin Electric Intertie Noise & Vibration Study and Land Use Assessment posted on the web at http://www.rcgov.org/planning/transportation/seconnector/final_rapid_city_basin_noise_vib_report_v8kms.pdf regarding the Basin Electric intertie.

3.) Alternate Land Use Designations:

- 1.) LDR w/PRD when Rapid City sewer and water are available
- 2.) LDR w/PRD when Rapid City sewer and water are available
- 3.) PRD 1du/ac



SE CONNECTOR FUTURE LAND USE PLAN
RAPID CITY, SD

