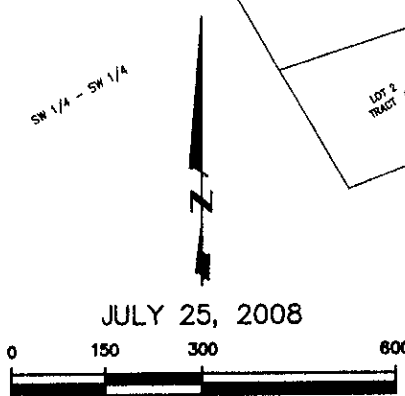
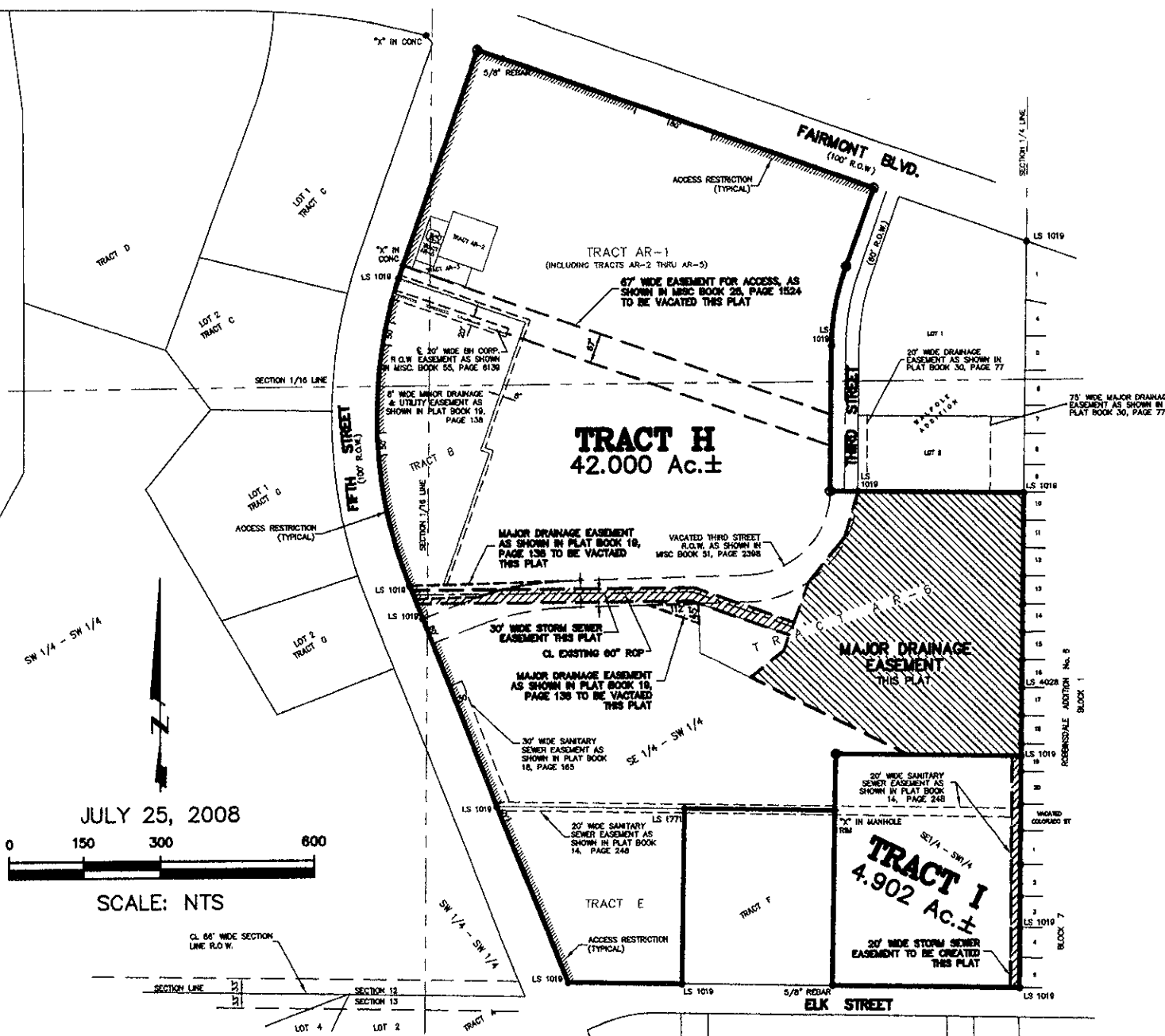


TRACTS H AND I REGIONAL HOSPITAL ADDITION

(formerly Vacated Third Street Right-Of-Way,
Tracts AR-1 thru AR-9, Tract B, and Tract E OF Regional Hospital Addition;
a part of the Unplatted Portion of SE1/4 of the SW1/4 of Section 12, T1N, R7E, BHM)
LOCATED IN THE SW1/4 OF SECTION 12, T1N, R7E, BHM
RAPID CITY, PENNINGTON COUNTY, SOUTH DAKOTA



JULY 25, 2008

RECEIVED

JUL 25 2008

Renner & Associates, LLC.

616 Sixth St. * Rapid City, SD 57701 * 605/721-7310
FAX: 605/721-7313 * E-MAIL: Gory@RennerAssoc.com
* Spearfish 605/717-0016 *

Rapid City Growth
Management Department



CITY HALL 1903