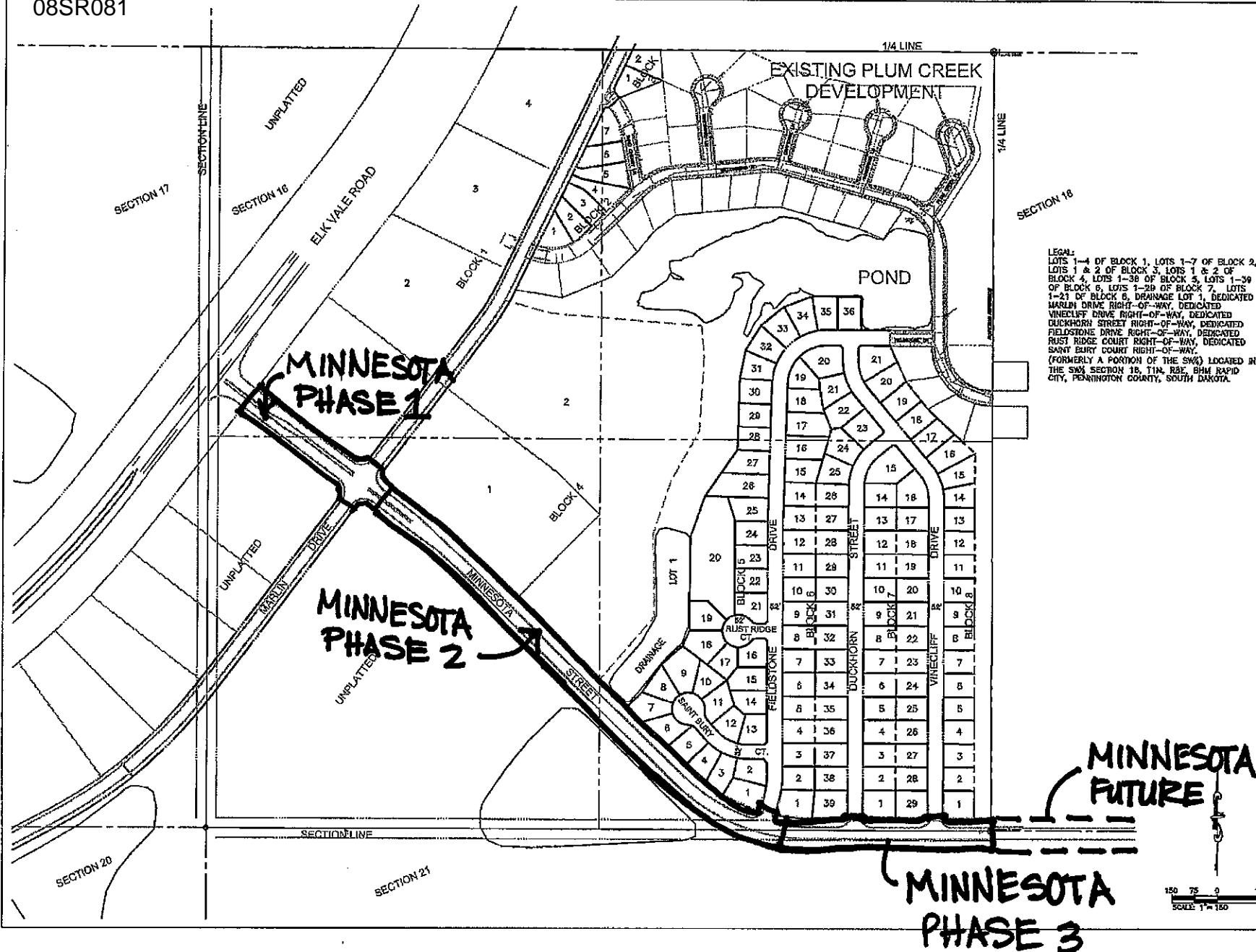




**PRELIMINARY FOR REVIEW ONLY**



LEGAL: LOTS 1-4 OF BLOCK 1, LOTS 1-7 OF BLOCK 2, LOTS 1 & 2 OF BLOCK 3, LOTS 1 & 2 OF BLOCK 4, LOTS 1-30 OF BLOCK 5, LOTS 1-30 OF BLOCK 6, LOTS 1-30 OF BLOCK 7, LOTS 1-21 OF BLOCK 8, DRAINAGE LOT 1, DEDICATED MARLIN DRIVE RIGHT-OF-WAY, DEDICATED VINECLIFF DRIVE RIGHT-OF-WAY, DEDICATED DUCKHORN STREET RIGHT-OF-WAY, DEDICATED FIELDSTONE DRIVE RIGHT-OF-WAY, DEDICATED RUST RIDGE COURT RIGHT-OF-WAY, DEDICATED SAINT BARRY COURT RIGHT-OF-WAY (FORMERLY A PORTION OF THE SW¼) LOCATED IN THE SW¼ SECTION 18, T14N, R2E, BHM RAPID CITY, PENNINGTON COUNTY, SOUTH DAKOTA.

Drawn By:	Checked By:	Drawn At:
08-010	118	12AB
Revised By:		Revised Date:

Project Name:	
Client Name:	
Address:	
City/State:	
Project No.:	
Sheet No.:	
Scale:	

ELKS CROSSING

