

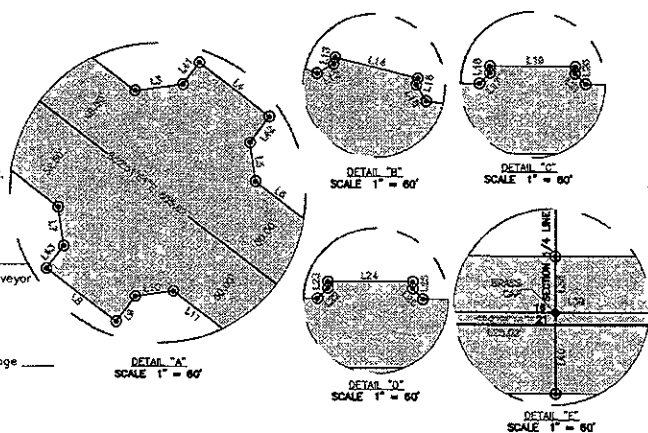
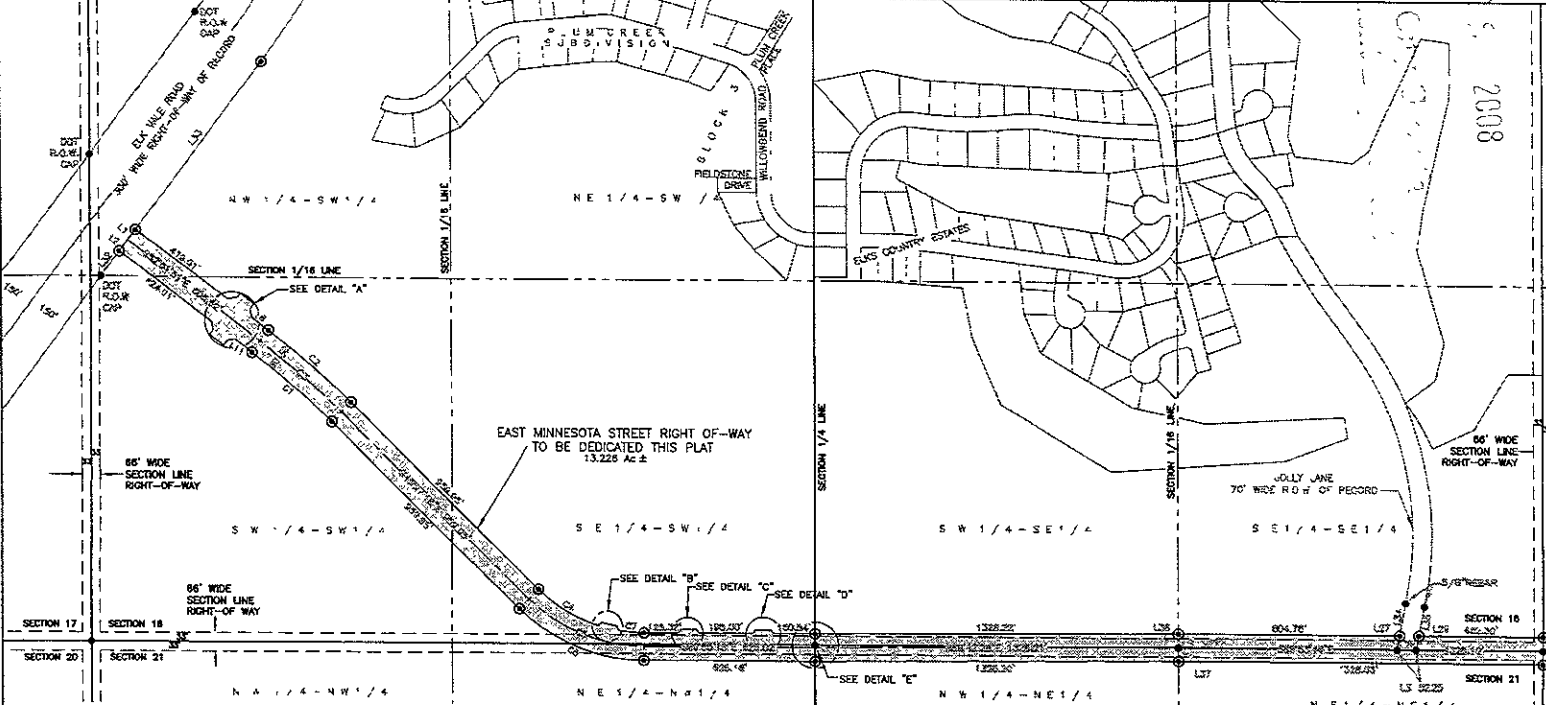
LOCATED IN THE NW 1/4 OF THE SW 1/4 AND IN THE S 1/2 OF THE S 1/2 OF SECTION 16, ALSO IN THE NE 1/4 OF THE NW 1/4 AND IN THE N 1/2 OF THE NE 1/4 OF SECTION 21

ALL LOCATED IN T1N. R8E. B1M  
RAPID CITY, PENNINGTON COUNTY, SOUTH DAKOTA

AUGUST 28, 2008  
SCALE 1" = 200'

| CHURN | LENGTH  | RADIUS   | CHORD   | CHORD BEARING   | CHORD DISTANCE |
|-------|---------|----------|---------|-----------------|----------------|
| L1    | 44.54'  | 2000.00' | 242.03' | N 89° 52' 00" E | 242.03'        |
| L2    | 45.40'  | 2000.00' | 242.03' | N 89° 52' 00" E | 242.03'        |
| L3    | 46.26'  | 2000.00' | 242.03' | N 89° 52' 00" E | 242.03'        |
| L4    | 47.12'  | 2000.00' | 242.03' | N 89° 52' 00" E | 242.03'        |
| L5    | 47.98'  | 2000.00' | 242.03' | N 89° 52' 00" E | 242.03'        |
| L6    | 48.84'  | 2000.00' | 242.03' | N 89° 52' 00" E | 242.03'        |
| L7    | 49.70'  | 2000.00' | 242.03' | N 89° 52' 00" E | 242.03'        |
| L8    | 50.56'  | 2000.00' | 242.03' | N 89° 52' 00" E | 242.03'        |
| L9    | 51.42'  | 2000.00' | 242.03' | N 89° 52' 00" E | 242.03'        |
| L10   | 52.28'  | 2000.00' | 242.03' | N 89° 52' 00" E | 242.03'        |
| L11   | 53.14'  | 2000.00' | 242.03' | N 89° 52' 00" E | 242.03'        |
| L12   | 54.00'  | 2000.00' | 242.03' | N 89° 52' 00" E | 242.03'        |
| L13   | 54.86'  | 2000.00' | 242.03' | N 89° 52' 00" E | 242.03'        |
| L14   | 55.72'  | 2000.00' | 242.03' | N 89° 52' 00" E | 242.03'        |
| L15   | 56.58'  | 2000.00' | 242.03' | N 89° 52' 00" E | 242.03'        |
| L16   | 57.44'  | 2000.00' | 242.03' | N 89° 52' 00" E | 242.03'        |
| L17   | 58.30'  | 2000.00' | 242.03' | N 89° 52' 00" E | 242.03'        |
| L18   | 59.16'  | 2000.00' | 242.03' | N 89° 52' 00" E | 242.03'        |
| L19   | 60.02'  | 2000.00' | 242.03' | N 89° 52' 00" E | 242.03'        |
| L20   | 60.88'  | 2000.00' | 242.03' | N 89° 52' 00" E | 242.03'        |
| L21   | 61.74'  | 2000.00' | 242.03' | N 89° 52' 00" E | 242.03'        |
| L22   | 62.60'  | 2000.00' | 242.03' | N 89° 52' 00" E | 242.03'        |
| L23   | 63.46'  | 2000.00' | 242.03' | N 89° 52' 00" E | 242.03'        |
| L24   | 64.32'  | 2000.00' | 242.03' | N 89° 52' 00" E | 242.03'        |
| L25   | 65.18'  | 2000.00' | 242.03' | N 89° 52' 00" E | 242.03'        |
| L26   | 66.04'  | 2000.00' | 242.03' | N 89° 52' 00" E | 242.03'        |
| L27   | 66.90'  | 2000.00' | 242.03' | N 89° 52' 00" E | 242.03'        |
| L28   | 67.76'  | 2000.00' | 242.03' | N 89° 52' 00" E | 242.03'        |
| L29   | 68.62'  | 2000.00' | 242.03' | N 89° 52' 00" E | 242.03'        |
| L30   | 69.48'  | 2000.00' | 242.03' | N 89° 52' 00" E | 242.03'        |
| L31   | 70.34'  | 2000.00' | 242.03' | N 89° 52' 00" E | 242.03'        |
| L32   | 71.20'  | 2000.00' | 242.03' | N 89° 52' 00" E | 242.03'        |
| L33   | 72.06'  | 2000.00' | 242.03' | N 89° 52' 00" E | 242.03'        |
| L34   | 72.92'  | 2000.00' | 242.03' | N 89° 52' 00" E | 242.03'        |
| L35   | 73.78'  | 2000.00' | 242.03' | N 89° 52' 00" E | 242.03'        |
| L36   | 74.64'  | 2000.00' | 242.03' | N 89° 52' 00" E | 242.03'        |
| L37   | 75.50'  | 2000.00' | 242.03' | N 89° 52' 00" E | 242.03'        |
| L38   | 76.36'  | 2000.00' | 242.03' | N 89° 52' 00" E | 242.03'        |
| L39   | 77.22'  | 2000.00' | 242.03' | N 89° 52' 00" E | 242.03'        |
| L40   | 78.08'  | 2000.00' | 242.03' | N 89° 52' 00" E | 242.03'        |
| L41   | 78.94'  | 2000.00' | 242.03' | N 89° 52' 00" E | 242.03'        |
| L42   | 79.80'  | 2000.00' | 242.03' | N 89° 52' 00" E | 242.03'        |
| L43   | 80.66'  | 2000.00' | 242.03' | N 89° 52' 00" E | 242.03'        |
| L44   | 81.52'  | 2000.00' | 242.03' | N 89° 52' 00" E | 242.03'        |
| L45   | 82.38'  | 2000.00' | 242.03' | N 89° 52' 00" E | 242.03'        |
| L46   | 83.24'  | 2000.00' | 242.03' | N 89° 52' 00" E | 242.03'        |
| L47   | 84.10'  | 2000.00' | 242.03' | N 89° 52' 00" E | 242.03'        |
| L48   | 84.96'  | 2000.00' | 242.03' | N 89° 52' 00" E | 242.03'        |
| L49   | 85.82'  | 2000.00' | 242.03' | N 89° 52' 00" E | 242.03'        |
| L50   | 86.68'  | 2000.00' | 242.03' | N 89° 52' 00" E | 242.03'        |
| L51   | 87.54'  | 2000.00' | 242.03' | N 89° 52' 00" E | 242.03'        |
| L52   | 88.40'  | 2000.00' | 242.03' | N 89° 52' 00" E | 242.03'        |
| L53   | 89.26'  | 2000.00' | 242.03' | N 89° 52' 00" E | 242.03'        |
| L54   | 90.12'  | 2000.00' | 242.03' | N 89° 52' 00" E | 242.03'        |
| L55   | 90.98'  | 2000.00' | 242.03' | N 89° 52' 00" E | 242.03'        |
| L56   | 91.84'  | 2000.00' | 242.03' | N 89° 52' 00" E | 242.03'        |
| L57   | 92.70'  | 2000.00' | 242.03' | N 89° 52' 00" E | 242.03'        |
| L58   | 93.56'  | 2000.00' | 242.03' | N 89° 52' 00" E | 242.03'        |
| L59   | 94.42'  | 2000.00' | 242.03' | N 89° 52' 00" E | 242.03'        |
| L60   | 95.28'  | 2000.00' | 242.03' | N 89° 52' 00" E | 242.03'        |
| L61   | 96.14'  | 2000.00' | 242.03' | N 89° 52' 00" E | 242.03'        |
| L62   | 97.00'  | 2000.00' | 242.03' | N 89° 52' 00" E | 242.03'        |
| L63   | 97.86'  | 2000.00' | 242.03' | N 89° 52' 00" E | 242.03'        |
| L64   | 98.72'  | 2000.00' | 242.03' | N 89° 52' 00" E | 242.03'        |
| L65   | 99.58'  | 2000.00' | 242.03' | N 89° 52' 00" E | 242.03'        |
| L66   | 100.44' | 2000.00' | 242.03' | N 89° 52' 00" E | 242.03'        |
| L67   | 101.30' | 2000.00' | 242.03' | N 89° 52' 00" E | 242.03'        |
| L68   | 102.16' | 2000.00' | 242.03' | N 89° 52' 00" E | 242.03'        |
| L69   | 103.02' | 2000.00' | 242.03' | N 89° 52' 00" E | 242.03'        |
| L70   | 103.88' | 2000.00' | 242.03' | N 89° 52' 00" E | 242.03'        |
| L71   | 104.74' | 2000.00' | 242.03' | N 89° 52' 00" E | 242.03'        |
| L72   | 105.60' | 2000.00' | 242.03' | N 89° 52' 00" E | 242.03'        |
| L73   | 106.46' | 2000.00' | 242.03' | N 89° 52' 00" E | 242.03'        |
| L74   | 107.32' | 2000.00' | 242.03' | N 89° 52' 00" E | 242.03'        |
| L75   | 108.18' | 2000.00' | 242.03' | N 89° 52' 00" E | 242.03'        |
| L76   | 109.04' | 2000.00' | 242.03' | N 89° 52' 00" E | 242.03'        |
| L77   | 109.90' | 2000.00' | 242.03' | N 89° 52' 00" E | 242.03'        |
| L78   | 110.76' | 2000.00' | 242.03' | N 89° 52' 00" E | 242.03'        |
| L79   | 111.62' | 2000.00' | 242.03' | N 89° 52' 00" E | 242.03'        |
| L80   | 112.48' | 2000.00' | 242.03' | N 89° 52' 00" E | 242.03'        |
| L81   | 113.34' | 2000.00' | 242.03' | N 89° 52' 00" E | 242.03'        |
| L82   | 114.20' | 2000.00' | 242.03' | N 89° 52' 00" E | 242.03'        |
| L83   | 115.06' | 2000.00' | 242.03' | N 89° 52' 00" E | 242.03'        |
| L84   | 115.92' | 2000.00' | 242.03' | N 89° 52' 00" E | 242.03'        |
| L85   | 116.78' | 2000.00' | 242.03' | N 89° 52' 00" E | 242.03'        |
| L86   | 117.64' | 2000.00' | 242.03' | N 89° 52' 00" E | 242.03'        |
| L87   | 118.50' | 2000.00' | 242.03' | N 89° 52' 00" E | 242.03'        |
| L88   | 119.36' | 2000.00' | 242.03' | N 89° 52' 00" E | 242.03'        |
| L89   | 120.22' | 2000.00' | 242.03' | N 89° 52' 00" E | 242.03'        |
| L90   | 121.08' | 2000.00' | 242.03' | N 89° 52' 00" E | 242.03'        |
| L91   | 121.94' | 2000.00' | 242.03' | N 89° 52' 00" E | 242.03'        |
| L92   | 122.80' | 2000.00' | 242.03' | N 89° 52' 00" E | 242.03'        |
| L93   | 123.66' | 2000.00' | 242.03' | N 89° 52' 00" E | 242.03'        |
| L94   | 124.52' | 2000.00' | 242.03' | N 89° 52' 00" E | 242.03'        |
| L95   | 125.38' | 2000.00' | 242.03' | N 89° 52' 00" E | 242.03'        |
| L96   | 126.24' | 2000.00' | 242.03' | N 89° 52' 00" E | 242.03'        |
| L97   | 127.10' | 2000.00' | 242.03' | N 89° 52' 00" E | 242.03'        |
| L98   | 127.96' | 2000.00' | 242.03' | N 89° 52' 00" E | 242.03'        |
| L99   | 128.82' | 2000.00' | 242.03' | N 89° 52' 00" E | 242.03'        |
| L100  | 129.68' | 2000.00' | 242.03' | N 89° 52' 00" E | 242.03'        |

| CHURN | LENGTH | RADIUS  | CHORD   | CHORD BEARING   | CHORD DISTANCE |
|-------|--------|---------|---------|-----------------|----------------|
| C1    | 351.48 | 2000.00 | 724.55' | S 20° 52' 00" E | 724.55'        |
| C2    | 364.41 | 2000.00 | 724.55' | S 20° 52' 00" E | 724.55'        |
| C3    | 387.95 | 2000.00 | 724.55' | S 20° 52' 00" E | 724.55'        |
| C4    | 294.51 | 2000.00 | 724.55' | S 20° 52' 00" E | 724.55'        |
| C5    | 464.86 | 2000.00 | 724.55' | S 20° 52' 00" E | 724.55'        |
| C6    | 506.48 | 2000.00 | 724.55' | S 20° 52' 00" E | 724.55'        |
| C7    | 402.57 | 2000.00 | 724.55' | S 20° 52' 00" E | 724.55'        |



**NOTES:**  
 • Denotes set 5/8" rebar with survey cap marked "RENNER&ASSOC-LS 9213"  
 • Denotes Found Brass Cap unless otherwise noted  
 Basis of Bearings: Solar Observation

**SURVEYOR'S STATEMENT**

I, Eric D Howard, Registered Land Surveyor No 9213 in the State of South Dakota, do hereby state that, at the direction of the City of Rapid City, this plat has been prepared, correctly representing a survey made at my direction, and that the location and dimensions of the tract of land as shown herein are correct to the best of my knowledge, information and belief

In witness whereof,  
 I have set my hand and seal this \_\_\_\_ day of \_\_\_\_\_, 2008  
 Eric D Howard, Registered Land Surveyor

**CERTIFICATE OF REGISTER OF DEEDS**  
 State of South Dakota  
 County of Pennington SS

Filed this \_\_\_\_ day of \_\_\_\_\_, 20\_\_\_\_, at \_\_\_\_ o'clock \_\_\_\_ M in Book \_\_\_\_ of Plats, Page \_\_\_\_

Fee: \$

Register of Deeds