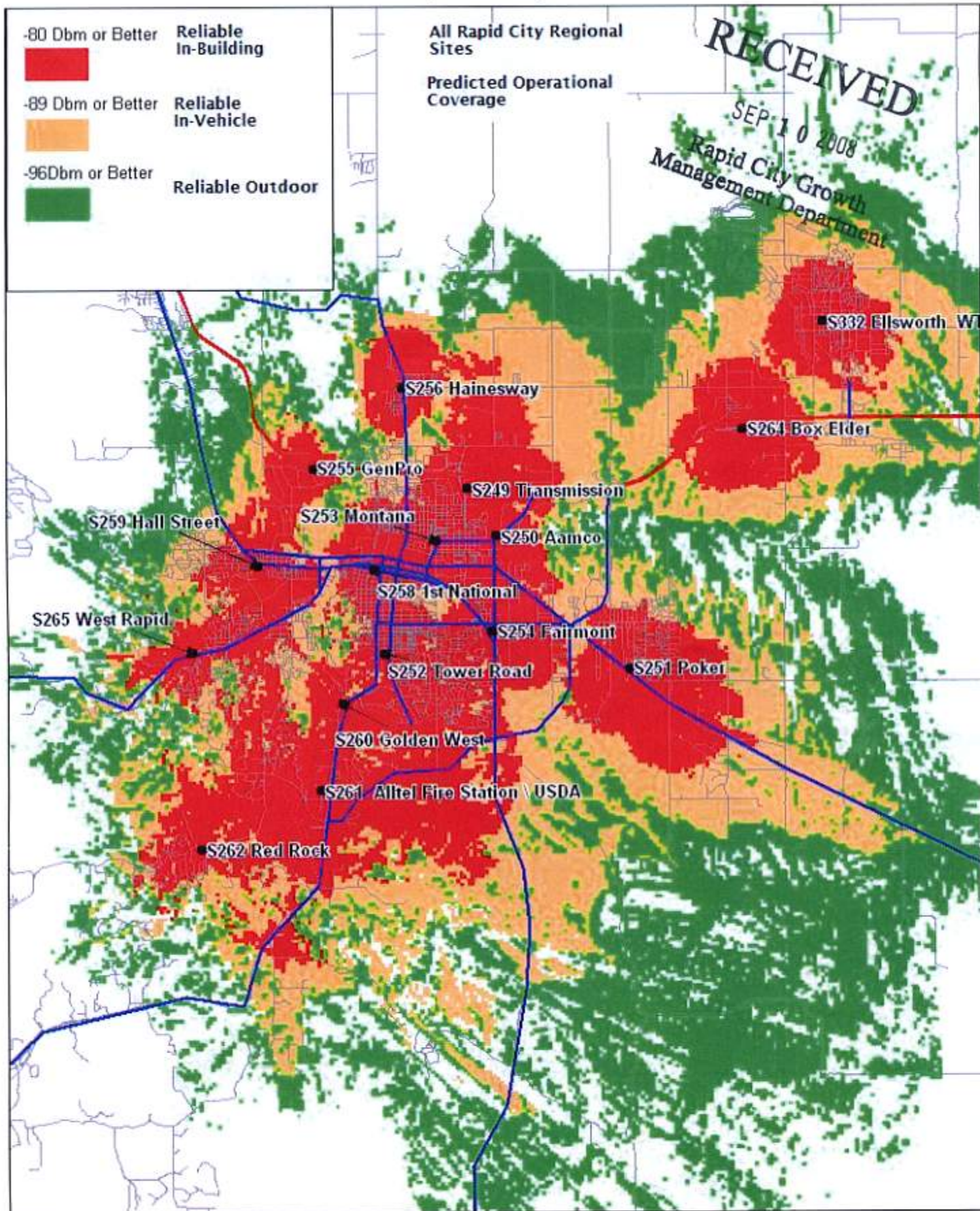
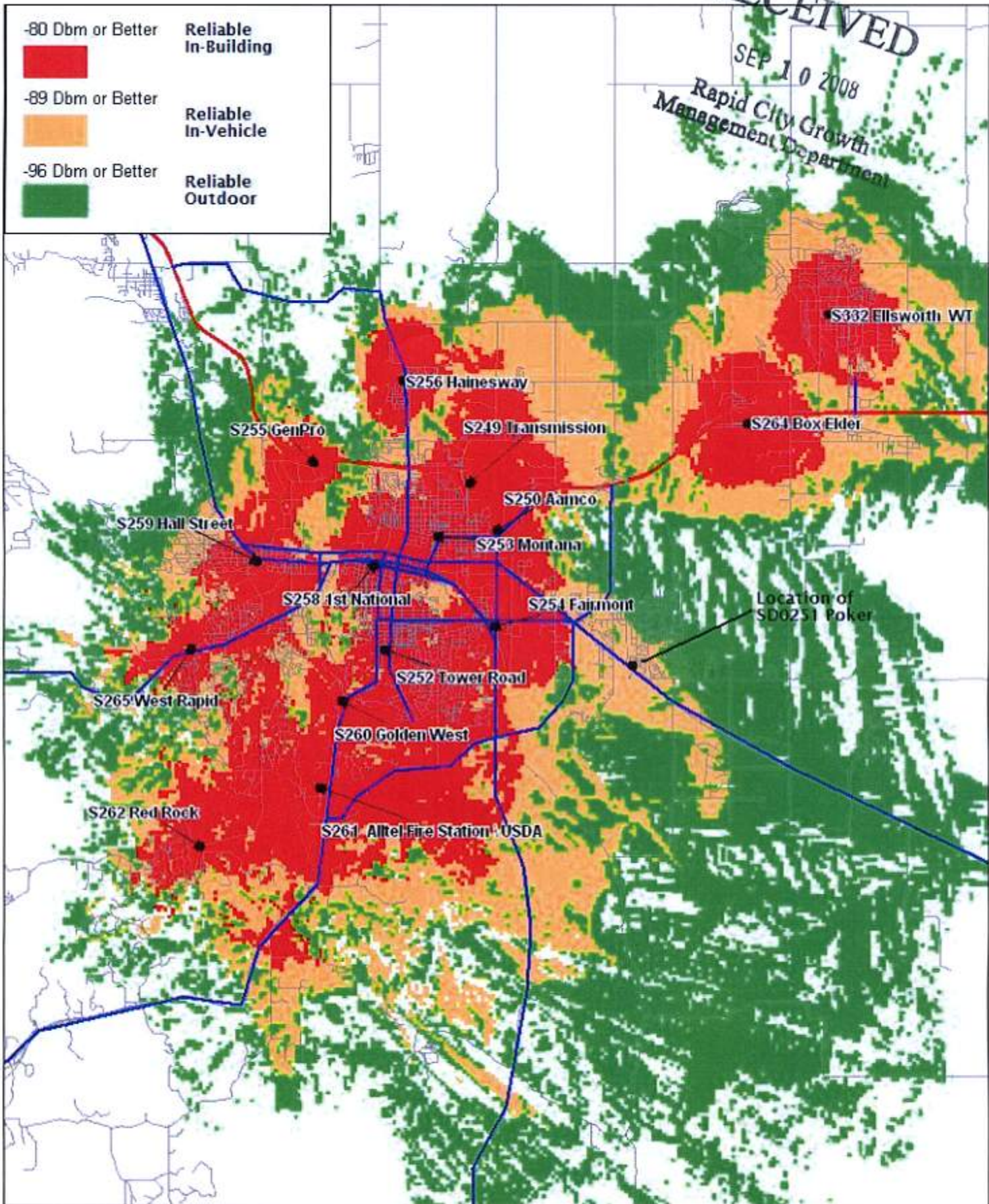


Complete Coverage



This RF coverage plot is based on an open rural topographical model. Coverage levels are predicted and are not a guarantee of actual or operational coverage.

RECEIVED
SEP 10 2008
Rapid City Growth
Management Department



This RF coverage plot is based on an open rural topographical model. Coverage levels are predicted and are not a guarantee of actual or operational coverage.