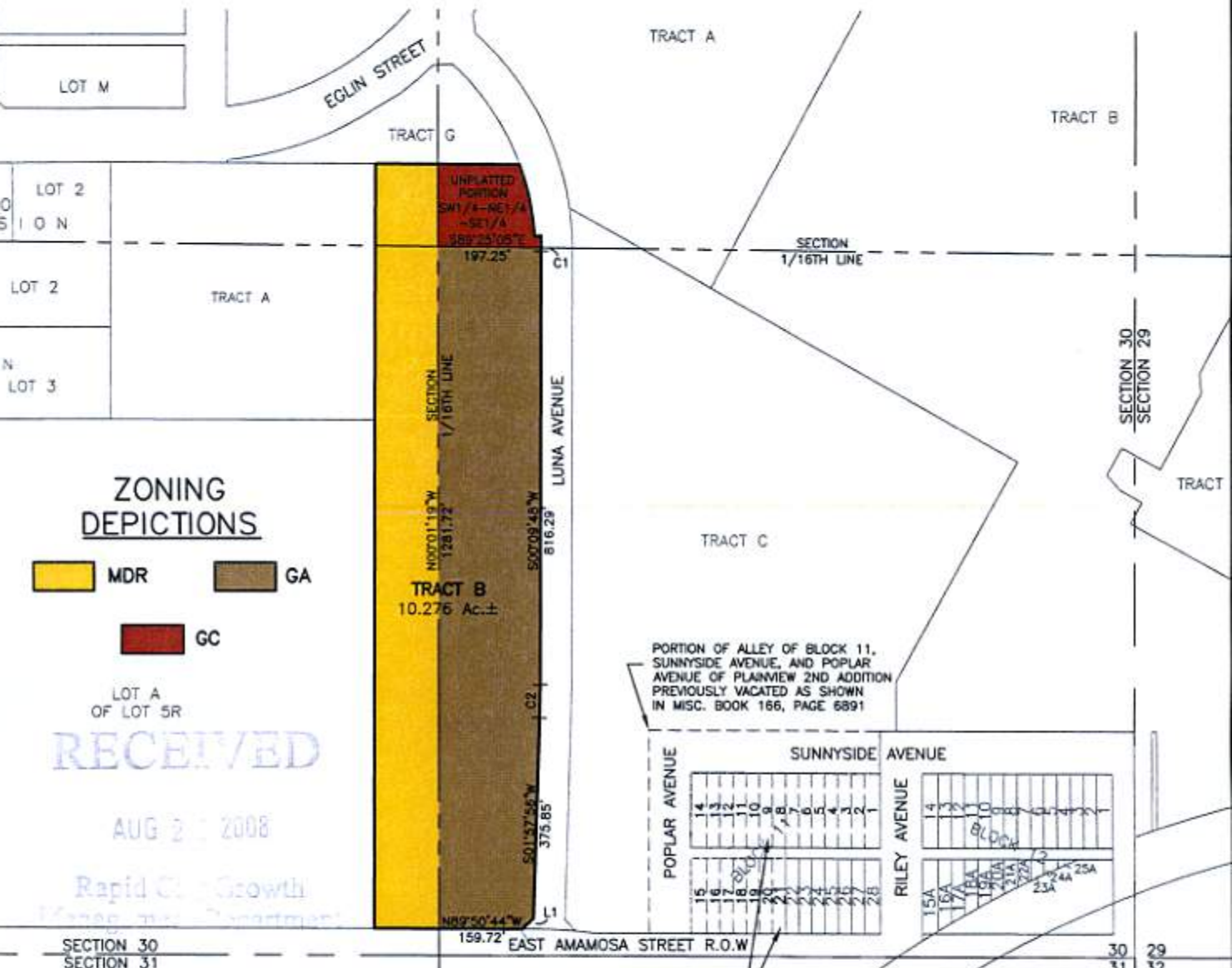


TRACT B OF RUSHMORE CENTER

LOCATED IN THE SE1/4
SECTION 30, T2N, R8E, BHM
RAPID CITY, PENNINGTON COUNTY, SOUTH DAKOTA



ZONING DEPICTIONS



LOT A
OF LOT 5R
RECEIVED
AUG 21 2008
Rapid City Growth
Management Department

PORTION OF ALLEY OF BLOCK 11,
SUNNYSIDE AVENUE, AND POPLAR
AVENUE OF PLAINVIEW 2ND ADDITION
PREVIOUSLY VACATED AS SHOWN
IN MISC. BOOK 166, PAGE 6891



LOTS 1-21 INCLUSIVE OF BLOCK 11,
PLAINVIEW 2ND ADDITION PREVIOUSLY VACATED
AS SHOWN IN MISC. BOOK 155, PAGE 7155
& MISC. BOOK 159, PAGE 5979

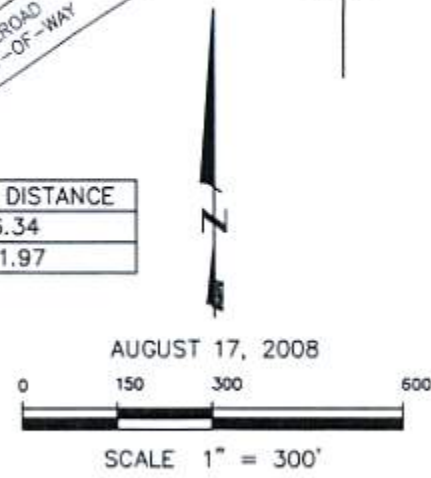
LINE	LENGTH	BEARING
L1	28.73'	S46°03'36"W

CURVE	LENGTH	RADIUS	DELTA	CHORD BEARING	CHORD DISTANCE
C1	6.34	476.00	00°45'45"	S00°13'05"E	6.34
C2	61.97	1970.00	1°48'09"	S01°03'52"W	61.97



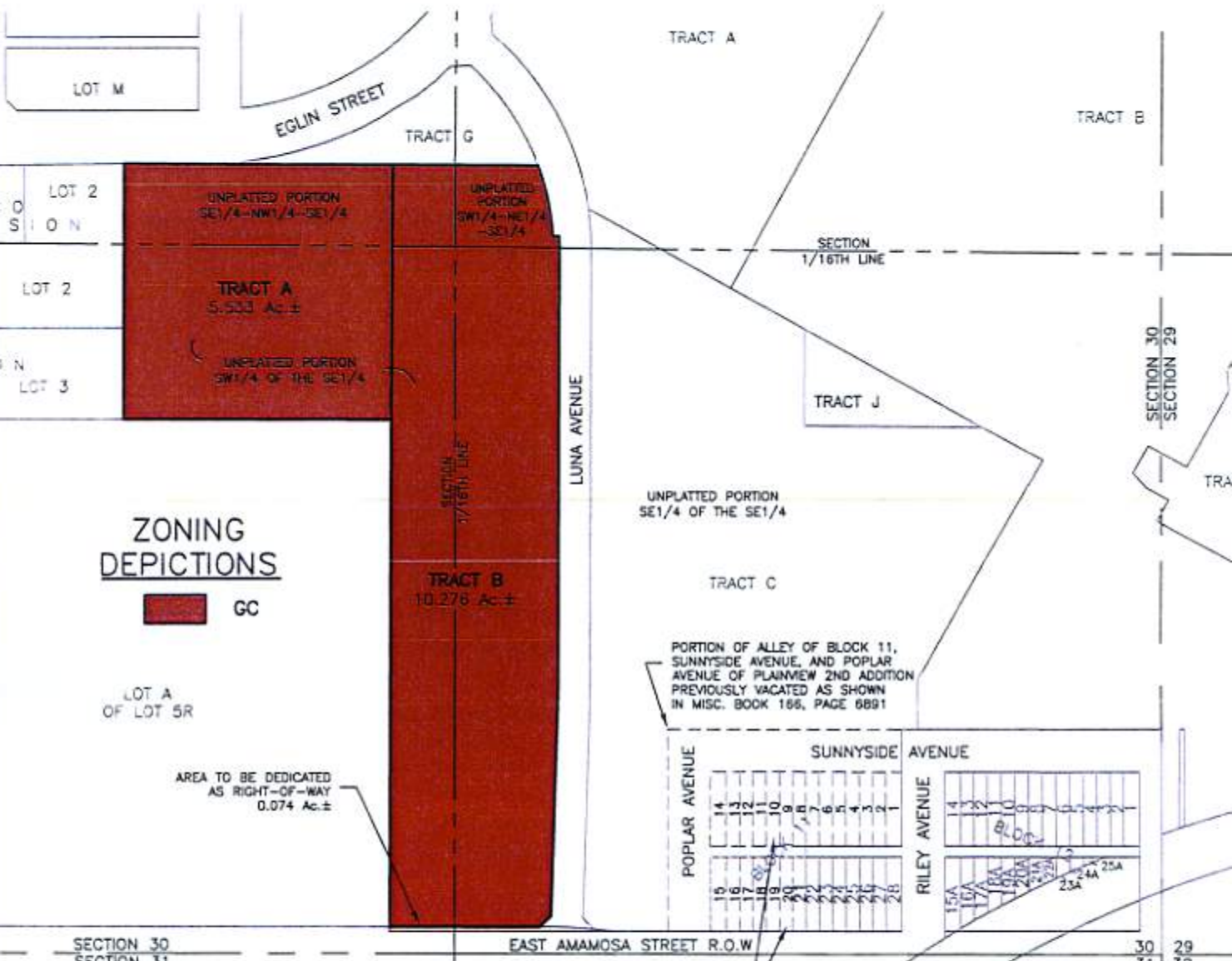
Renner & Associates, LLC.

616 Sixth St. • Rapid City, SD 57701 • 605/721-7310
FAX: 605/721-7313 • E-MAIL: Gary@RennerAssoc.com
• Spearfish 605/717-0016 •



AUGUST 17, 2008

PROPOSED REZONING MAP
**TRACTS A & B OF
RUSHMORE CENTER**
LOCATED IN THE SE1/4
SECTION 30, T2N, R8E, BHM
RAPID CITY, PENNINGTON COUNTY, SOUTH DAKOTA



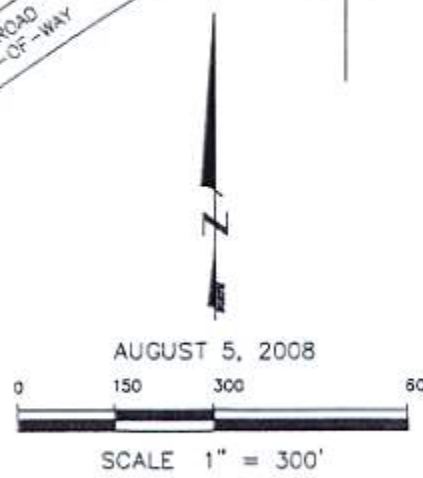
RECEIVED

AUG 28 2008

Rapid City
Management

Renner & Associates, LLC.

616 Sixth St. • Rapid City, SD 57701 • 605/721-7310
FAX: 605/721-7313 • E-MAIL: Gary@RennerAssoc.com
• Spearfish 605/717-0016 •



AUGUST 5, 2008