



**CITY REVIEW SET**  
**NOT FOR CONSTRUCTION**

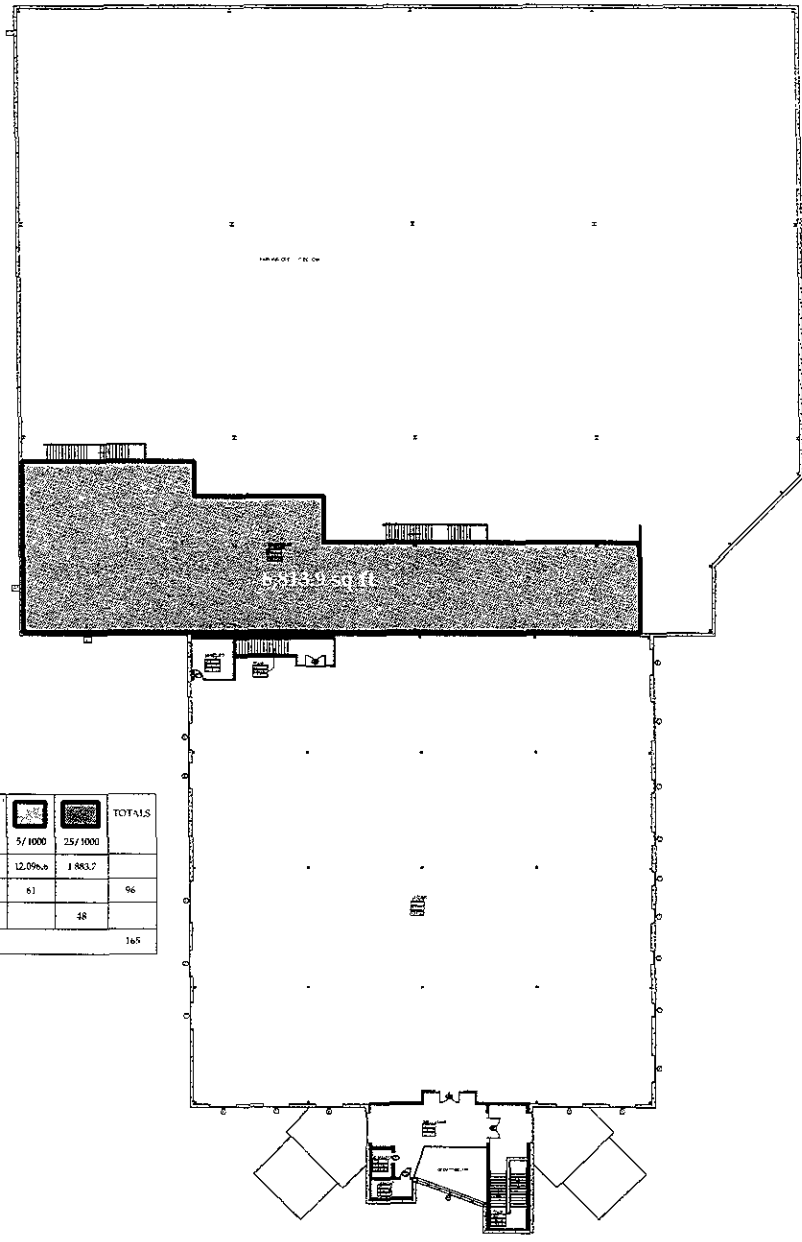
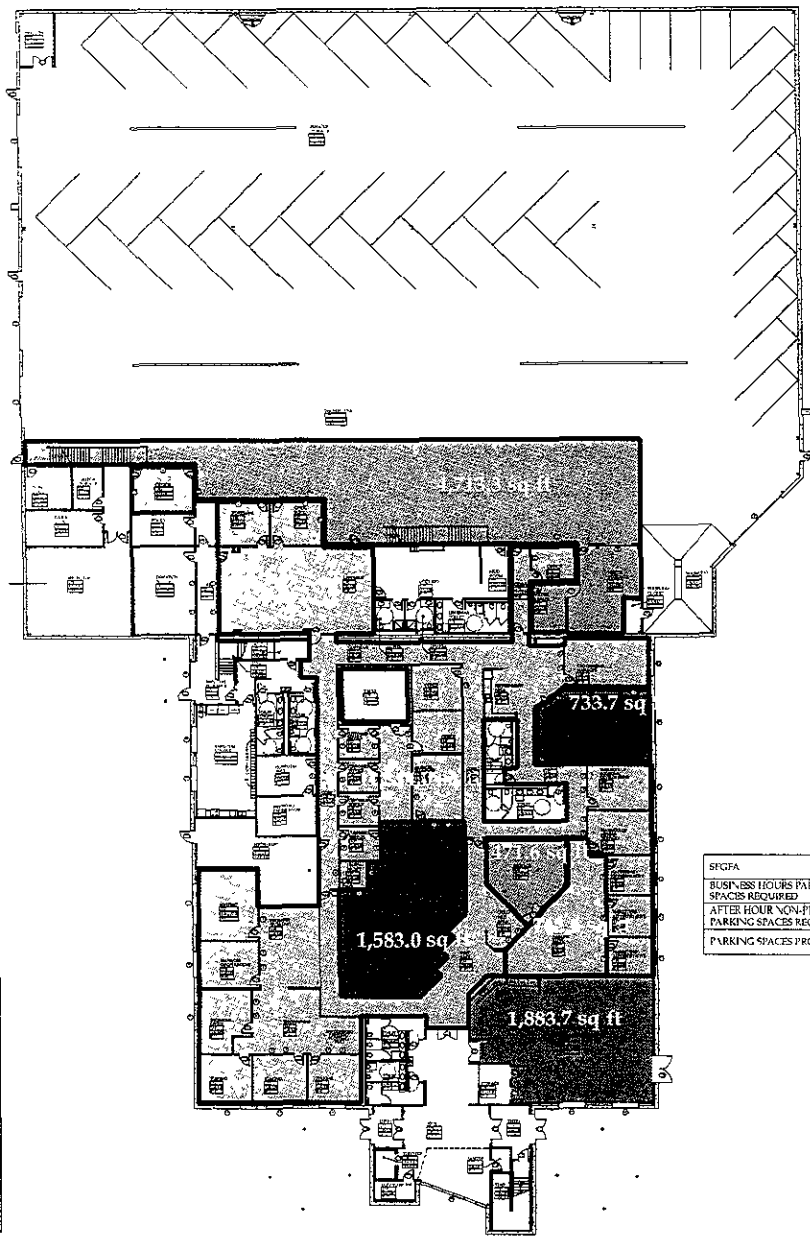


WEST RIVER ELECTRIC  
 PREPARATION OF  
 ARCHITECTURAL  
 DRAWINGS  
 3250 E HIGHWAY 44  
 RAPID CITY, SD 57708

**WEST RIVER ELECTRIC**  
 3250 E HIGHWAY 44  
 RAPID CITY, SD 57708

NO. 3 200 3 7  
 11 000 75 000  
 200 1 110  
 1 1 2  
 1 1 2

PARKING  
 REQUIREMENTS



SGFA	25/1000	5/1000	2 1/2/1000	5/1000	25/1000	TOTALS
BUSINESS HOURS PARKING SPACES REQUIRED	19	13	1	61		96
AFTER HOUR NON-PROFIT USE PARKING SPACES REQUIRED					48	
PARKING SPACES PROVIDED						165