

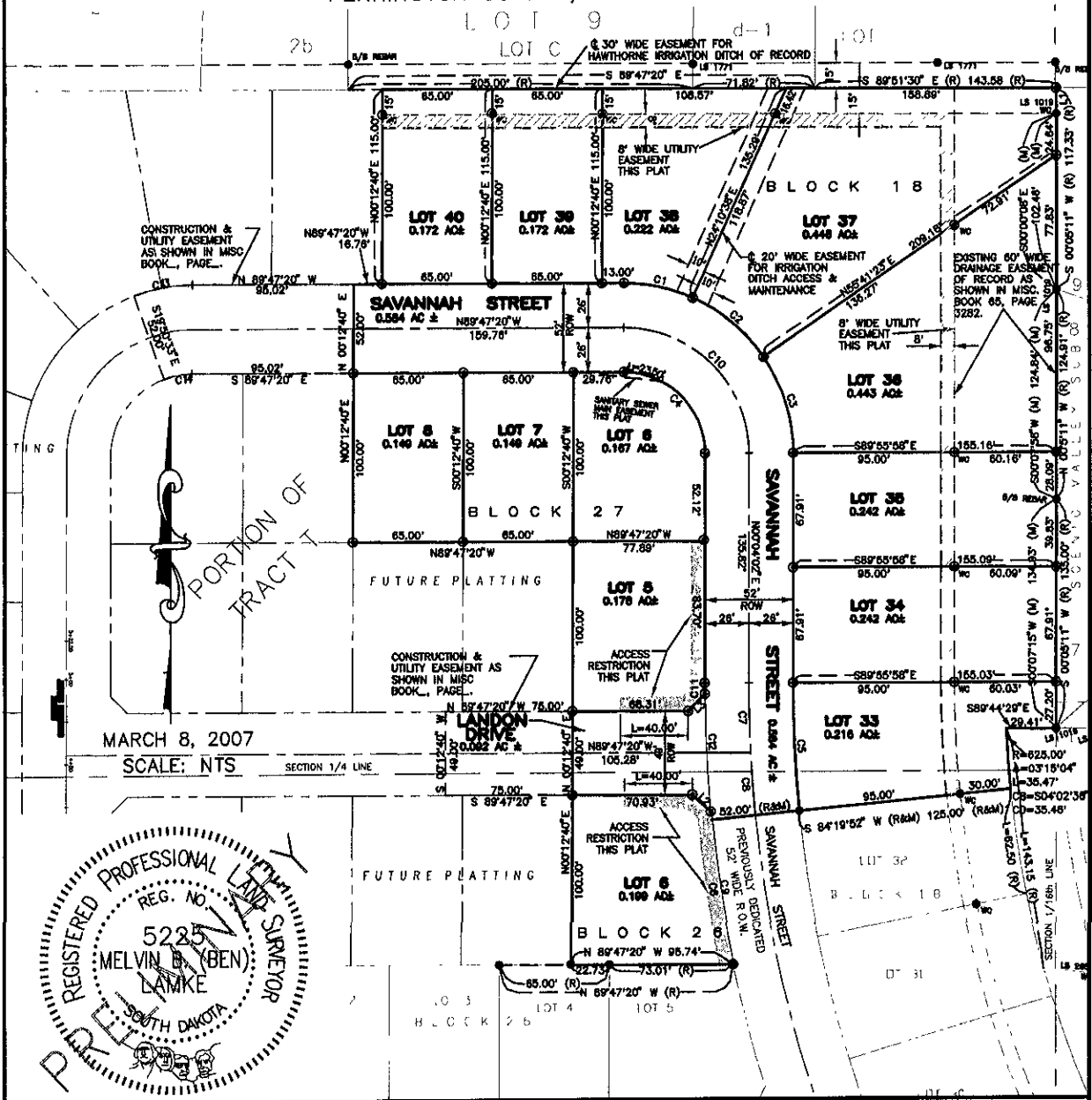
08SV043

PLAT OF

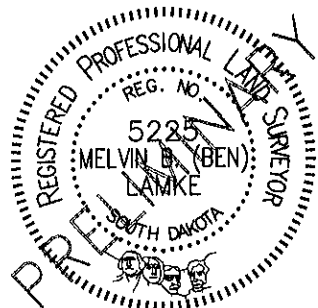
LOTS 33 THROUGH 40 OF BLOCK 18, LOT 6 OF BLOCK 26, LOTS 5 THROUGH 8 OF BLOCK 27, TRAILWOOD VILLAGE

(FORMERLY A PORTION OF TRACT T OF TRAILWOOD VILLAGE)
LOCATED IN THE NW¼ OF THE SE¼, AND IN THE SW¼ OF THE NE¼,
SECTION 10, T1N, R8E, B.H.M.,
PENNINGTON COUNTY, SOUTH DAKOTA

LOT 9



MARCH 8, 2007
SCALE: NTS



PREPARED BY: SPERLICH CONSULTING, INC. * 821 COLUMBUS STREET RAPID CITY SD 57701 * (605) 721-4040

C:\Projects\10791079_15\PLAT.dwg, 8/10/2008, 2:45:08 PM