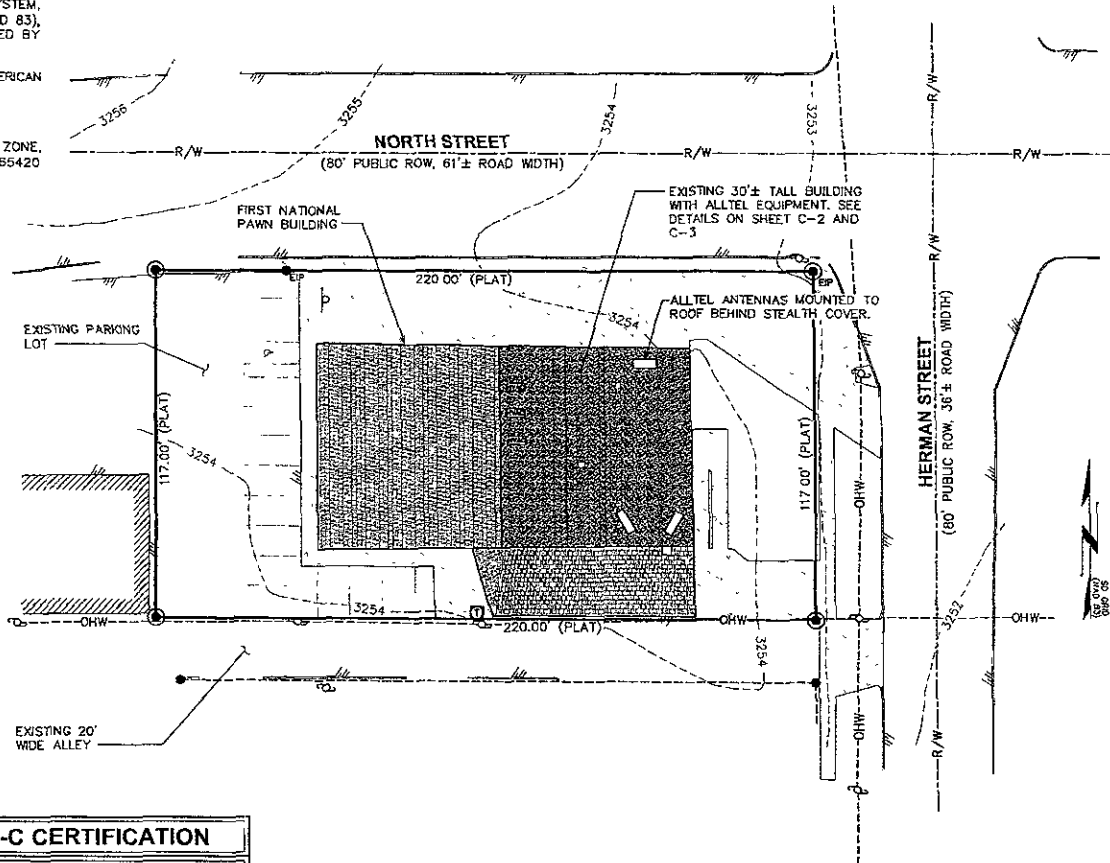


**NOTES:**

08SR042

- 1 THIS PLAN HAS BEEN PREPARED WITHOUT THE BENEFIT OF A REPORT OF TITLE
- 2 THIS PLAN DOES NOT REPRESENT A TITLE SURVEY
- 3 THE BASIS OF THE MERIDIANS AND COORDINATES FOR THIS PLAT IS THE SOUTH DAKOTA STATE PLANE COORDINATE SYSTEM, SOUTH ZONE, NORTH AMERICAN DATUM 1983 (SDSPCS NAD 83), BASED ON DIFFERENTIAL GPS OBSERVATIONS PERFORMED BY HUSKER SURVEYING LLC
- 4 VERTICAL INFORMATION SHOWN, BASED ON THE NORTH AMERICAN VERTICAL DATUM OF NAVD 1988 IN FEET
- 5 ALL DISTANCES ARE GROUND UNLESS OTHERWISE NOTED
6. THE EXISTING BUILDING IS NOT LOCATED IN A FLOOD ZONE, "X", AS DETERMINED BY FEMA FLOOD RATE MAP NO. 465420 0008 F, EFFECTIVE DATE FEBRUARY 16, 1996.



LEGEND	
	EXIST PROPERTY LINE
	EXIST. UTILITY POLE
	EXIST. BILLBOARD
	EXIST. HVAC UNITS
	EXIST. TELCO PEDESTAL
	PROPERTY CORNER
	EXISTING IRON PIN
	EXIST. CONTOUR LINE
	EDGE OF PAVEMENT
	OVERHEAD WIRE
	RIGHT-OF-WAY
	CHAIN LINK FENCE
	EXISTING TREE LINE
	PROPOSED TREE LINE

2-C CERTIFICATION	
LATITUDE:	N 44° 05' 14.29" (NAD '83)
LONGITUDE:	W 103° 12' 36.63" (NAD '83)
GROUND ELEVATION:	5189.1' (NAVD '88)

PLANS PREPARED FOR:

18300 E 71st Avenue  
Denver, CO 80249  
Office: (303)-373-3402

PROJECT INFORMATION

**MAPLE AVENUE  
SDRC**

207 E NORTH ST.  
RAPID CITY, SD 57701  
(PENNINGTON COUNTY)

PLANS PREPARED BY:

**TOWER ENGINEERING PROFESSIONALS**  
3703 JUNCTION BOULEVARD  
RALEIGH, NC 27603-5263  
OFFICE: (919) 661-6351  
FAX: (919) 661-6350

SEAL

REV	DATE	ISSUED FOR:
0	11-16-07	ERM DRAWINGS

DRAWN BY: NMC CHECKED BY: GM

SHEET TITLE:

**SITE PLAN**

SHEET NUMBER	REVISION
<b>C-1</b>	<b>0</b>
	TEP #: 07218

**SITE PLAN**

SCALE 1" = 40'

