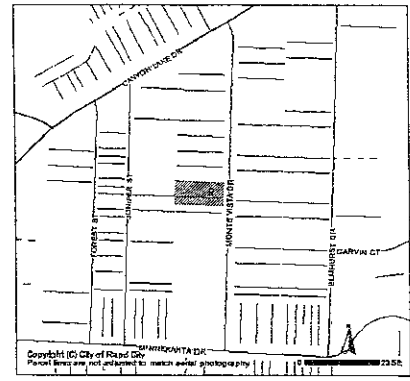
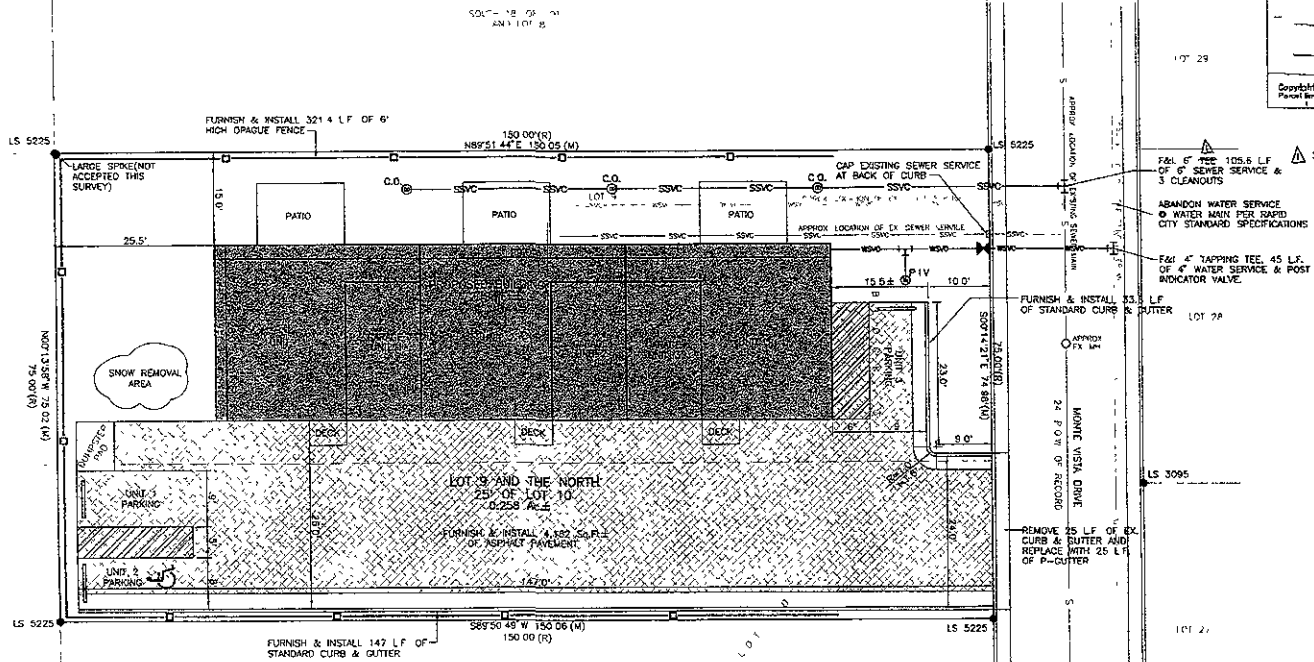


08PD044

AUG 06 2008

Rapid City Growth Management Department



VICINITY MAP

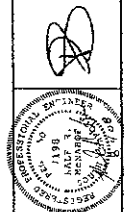
NOTE
REMOVE & REPLACE EXISTING ASPHALT & CURB & GUTTER AS NECESSARY TO FACILITATE CONSTRUCTION OF WATER & SEWER SERVICES



INDEX OF SHEETS

SHEET NO.	TITLE
1	SITE PLAN
2	GRADING PLAN
3	LANDSCAPING PLAN
4	DETAILS

SPERLICH
Consulting, Inc.
021 Columbia St. Suite 1 Rapid City SD 57701
TEL: (605) 721-4040 FAX: (605) 721-4049
MAIL: info@sperrlich.com
Engineering, Surveying, Planning



REVISIONS	DATE	BY	DESCRIPTION

SITE PLAN
Monte Visto

PROJECT NUMBER: 3170
SHEET: 1 / 4

C:\pds\08pd044\08pd044.dwg, SHEET: 08PD044-1.dwg, DATE: 8/6/2008 11:17 PM