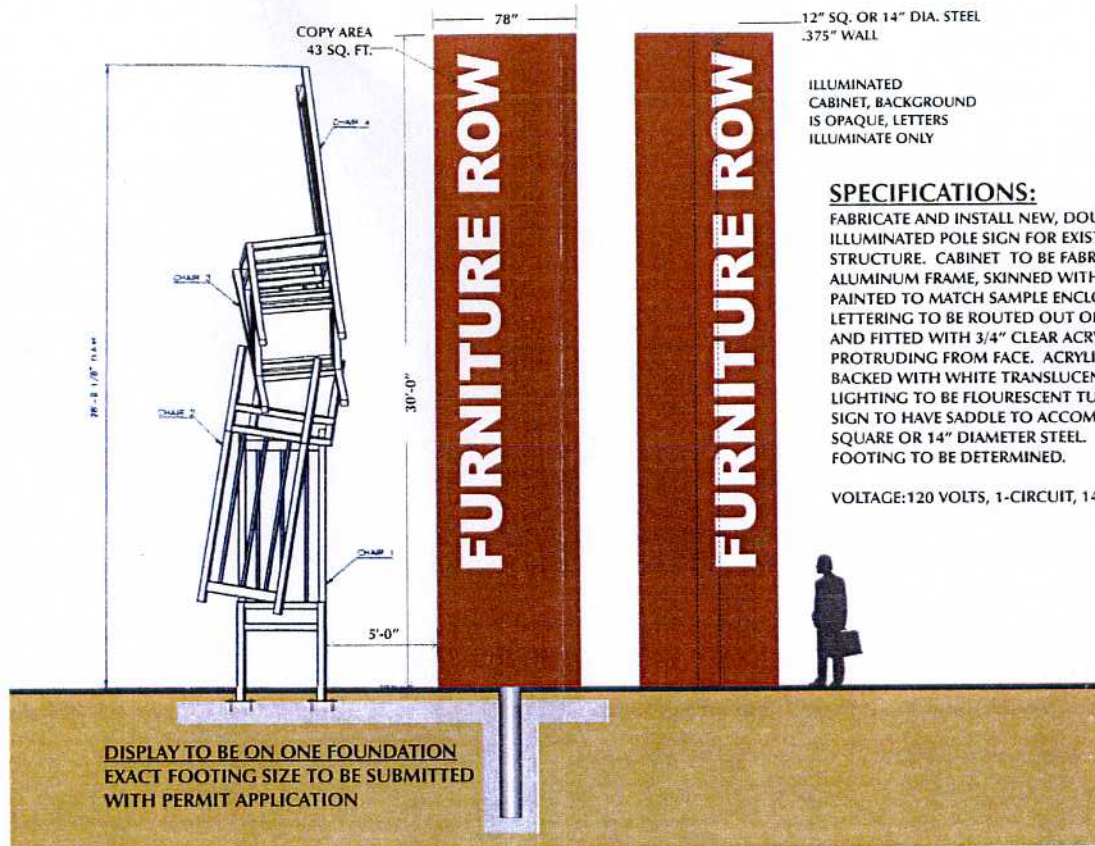


Furniture Row  
F. A. P. Sign



12" SQ. OR 14" DIA. STEEL  
.375" WALL

ILLUMINATED  
CABINET, BACKGROUND  
IS OPAQUE, LETTERS  
ILLUMINATE ONLY

**SPECIFICATIONS:**

FABRICATE AND INSTALL NEW, DOUBLE-FACED, ILLUMINATED POLE SIGN FOR EXISTING POLE STRUCTURE. CABINET TO BE FABRICATED WITH ALUMINUM FRAME, SKINNED WITH .125" ALUMINUM PAINTED TO MATCH SAMPLE ENCLOSED. LETTERING TO BE ROUTED OUT OF ALUMINUM FACE, AND FITTED WITH 3/4" CLEAR ACRYLIC LETTER PROTRUDING FROM FACE. ACRYLIC LETTER TO BE BACKED WITH WHITE TRANSLUCENT VINYL. LIGHTING TO BE FLOURESCENT TUBES. SIGN TO HAVE SADDLE TO ACCOMMODATE 12" SQUARE OR 14" DIAMETER STEEL. FOOTING TO BE DETERMINED.

VOLTAGE: 120 VOLTS, 1-CIRCUIT, 14 AMPS

DISPLAY TO BE ON ONE FOUNDATION  
EXACT FOOTING SIZE TO BE SUBMITTED  
WITH PERMIT APPLICATION

DDI  
JUL 24 2008  
SUBMITTED

RECEIVED  
JUL 24 2008  
Rapid City Growth  
Management Department

**CAPITOL SIGN**   
www.capitolsignco.com  
3421 N. 35TH STREET • LINCOLN, NE 68504

(800) 539-4464  
(402) 466-7446  
FAX (402) 466-2157

|            |                |              |              |
|------------|----------------|--------------|--------------|
| JOB TITLE: | FURNITURE ROW  | REVISION#    |              |
| LOCATION:  | RAPID CITY, SD | OPTION#      | 1            |
| DESIGN #   | 4029           | SALES:       | TONY AHMED   |
| DATE:      | 12-05-06       | DESIGNER:    | TONY PERSONS |
| SCALE:     | 3/16" = 1'     | APPROVED BY: |              |



B

A. 6.5" deep x 4" tall open channel with single stroke 15mm Seacrest neon. Channel painted semi-gloss black. Neon transformer in main cabinet.

B. 8" deep S/F, internal illuminated wall sign. 1.5" retainers, white lexan face with 3630-128 plum purple vinyl lettering. Fluorescent internal T-12 illumination. Cabinet and retainers to be painted black.

120 VOLTS



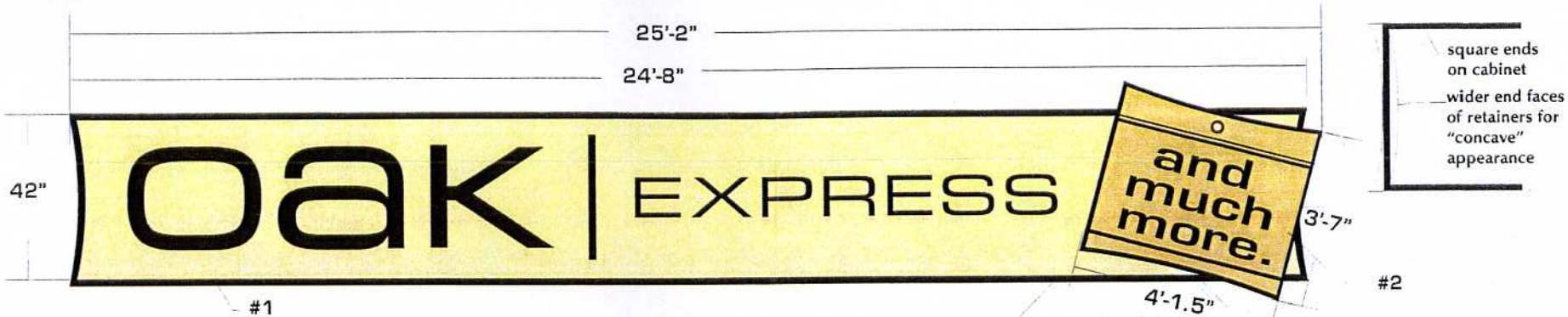
**CAPITOL SIGN**   
 www.capitolsgnco.com  
 3421 N. 35TH STREET • LINCOLN, NE 68504

(800) 539-4464  
 (402) 466-7446  
 FAX (402) 466-2157

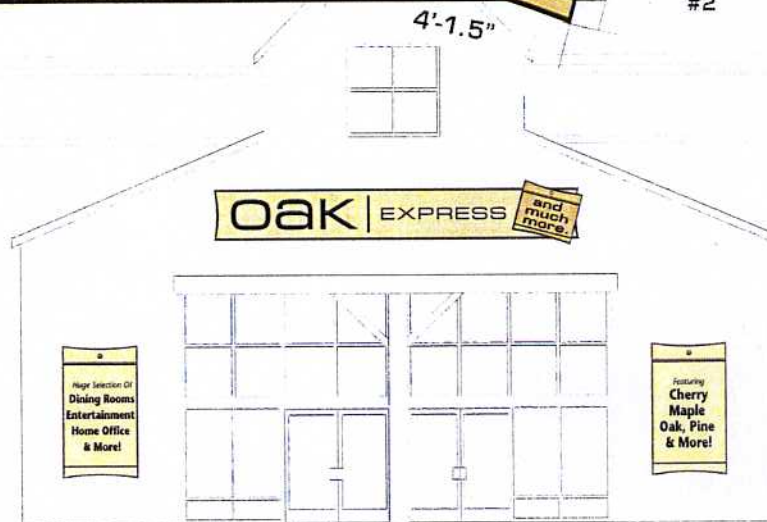
JOB TITLE: FURNITURE ROW  
 LOCATION: RAPID CITY, SD  
 DESIGN # 4029  
 DATE: 12-05-06  
 SCALE: 3/8" = 1'

REVISION#  
 OPTION# 1  
 SALES: TONY AHMED  
 DESIGNER: TONY PERSONS

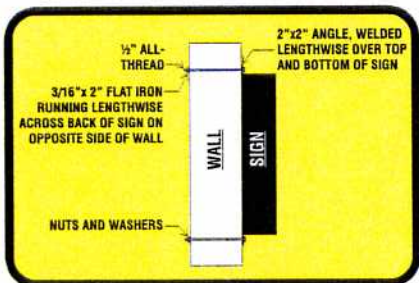
APPROVED BY: \_\_\_\_\_



1. Fabricate aluminum cabinet w/ 3/16" white poly-carbonate faces overlaid with ivory and black vinyl. Faces and 1.5" retainers to be concave on sides. Cabinet to be painted black, and retainers to be painted black. Sign to be illuminated using "Daylight Lamps" operating on 800MA ballasts. Bulbs to be 6" on center.
2. Fabricate 8" deep aluminum cabinet w/ white poly-carbonate face and concave top & bottom 1" retainers. Background vinyl to match PMS #459c. Paint cabinet black and returns black. Copy & lines to be black vinyl and circle to be rust vinyl. Sign to be illuminated using "Daylight Lamps" operating on 800MA ballasts. Bulbs to be 6" on center. 120 volt, 12.5 amps



**OAK EXPRESS MOUNTING SPECIFICATIONS**



**CAPITOL SIGN**



www.capitolsignco.com  
3421 N. 35TH STREET • LINCOLN, NE 68504

(800) 539-4464  
(402) 466-7446  
FAX (402) 466-2157

|            |                |              |              |
|------------|----------------|--------------|--------------|
| JOB TITLE: | FURNITURE ROW  | REVISION#    |              |
| LOCATION:  | RAPID CITY, SD | OPTION#      | 1            |
| DESIGN #   | 4029           | SALES:       | TONY AHMED   |
| DATE:      | 12-05-06       | DESIGNER:    | TONY PERSONS |
| SCALE:     | 1/2" = 1'      | APPROVED BY: |              |



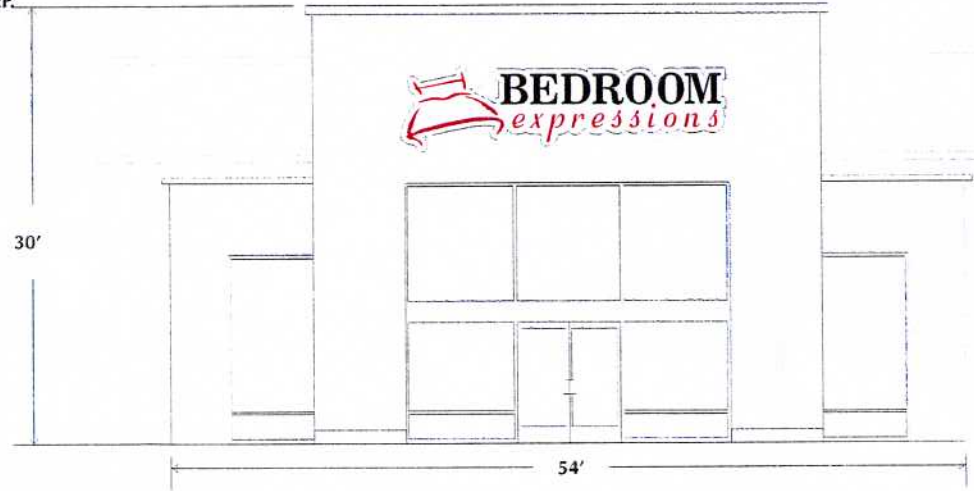
**"BEDROOM"** IS A SET OF REVERSE CHANNEL LETTERS. FACES ARE .080 ALUMINUM, PAINTED BLACK WELDED TO .063 RETURNS, 5" DEEP. REVERSE ILLUMINATION IS WHITE NEON. MOUNT TO WIRE RACEWAY.

**"EXPRESSIONS"** IS PINK LAVENDER VINYL APPLIED TO WIRE RACEWAY WITH SKELETON NEON ACCENTS.

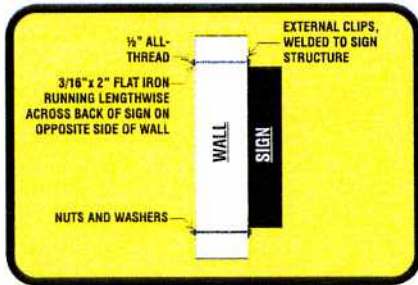
**BED LOGO** IS PINK LAVENDER VINYL APPLIED TO WIRE RACEWAY WITH SKELETON NEON ACCENTS.

ALL TRANSFORMERS LOCATED REMOTELY (BEHIND FASCIA).

**120 volt, 12.75 amps**



**BEDROOM EXPRESSIONS MOUNTING SPECIFICATIONS**



**CAPITOL SIGN**  **company**

www.capitolsignco.com (800) 539-4464  
(402) 466-7446  
3421 N. 35TH STREET • LINCOLN, NE 68504 FAX (402) 466-2157

|            |                |              |              |
|------------|----------------|--------------|--------------|
| JOB TITLE: | FURNITURE ROW  | REVISION#    |              |
| LOCATION:  | RAPID CITY, SD | OPTION#      | 1            |
| DESIGN #   | 4029           | SALES:       | TONY AHMED   |
| DATE:      | 12-05-06       | DESIGNER:    | TONY PERSONS |
| SCALE:     | 1/2" = 1'      | APPROVED BY: |              |



9'-0"

5'-0"

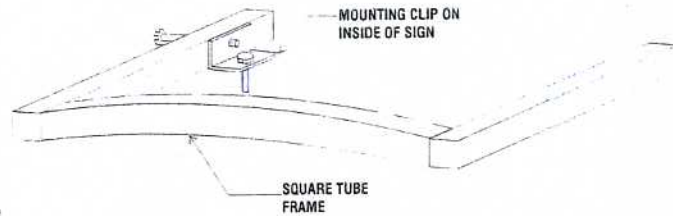
45sq. ft.

S/F Display Non-Illuminated

1/8" flat aluminum panel over 1" square tube frame, paint to match P.M.S.# 607C

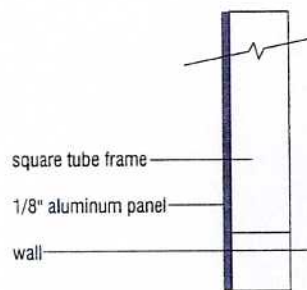
All copy & lines black "hole" to be rust with white center and black outline

Flush mount display to wall



MOUNTING CLIP ON INSIDE OF SIGN

SQUARE TUBE FRAME



square tube frame

1/8" aluminum panel

wall

End View 1/2 actual size

**CAPITOL SIGN**  
company  
www.capitol-signco.com

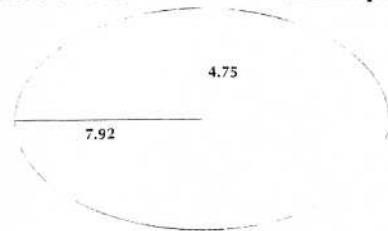


(800) 539-4464  
(402) 466-7446  
FAX (402) 466-2157

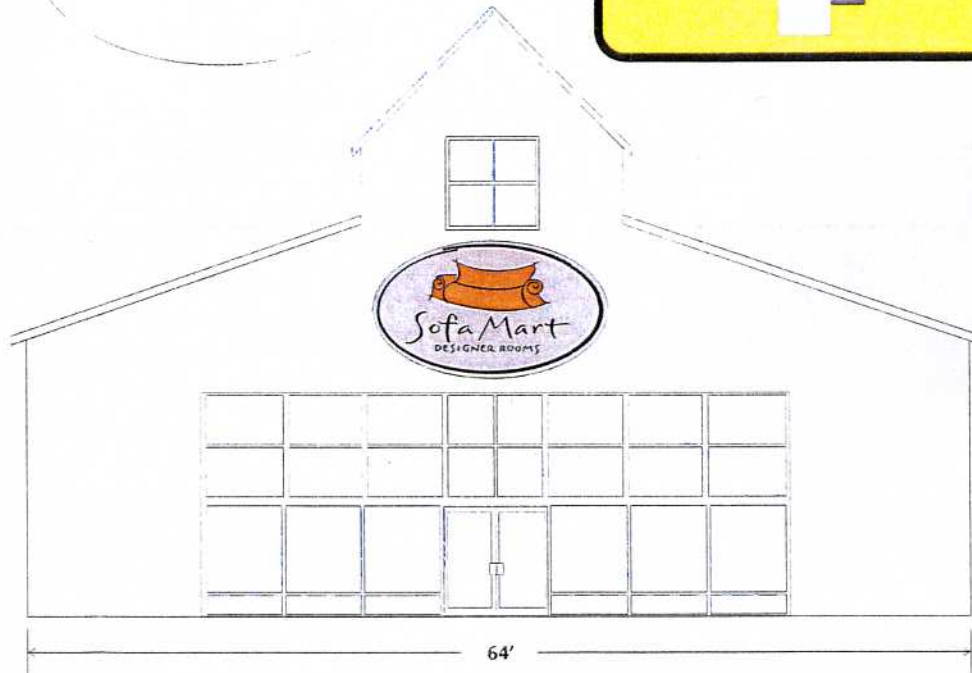
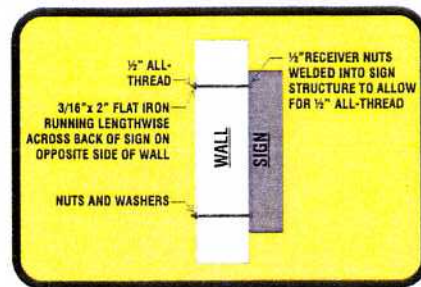
|            |                |              |              |
|------------|----------------|--------------|--------------|
| JOB TITLE: | FURNITURE ROW  | REVISION#    |              |
| LOCATION:  | RAPID CITY, SD | OPTION#      | 1            |
| DESIGN #   | 4029           | SALES:       | TONY AHMED   |
| DATE:      | 12-05-06       | DESIGNER:    | TONY PERSONS |
| SCALE:     | 1/2" = 1'      | APPROVED BY: |              |



$3.14(\text{Pi}) \times 4.75(\text{H}/2) \times 7.92(\text{L}/2) = 118 \text{ sq. ft.}$



**SOFA MART MOUNTING SPECIFICATIONS**



**SPECIFICATIONS:**

FABRICATE (1) ALUMINUM CABINET WITH 3" FLAT RETAINER SYSTEM. CABINET AND RETAINER TO BE PAINTED TO MATCH #VT 9033-2. FACE TO BE WHITE PANAFLEX, OVERLAID WITH #VT9033-2 VINYL, WITH WHITE BORDER. "SOFA" GRAPHIC TO BE #3630-44 ORANGE VINYL WITH BLACK VINYL DETAILS. COPY AND ACCENT OVAL TO BE BLACK VINYL.

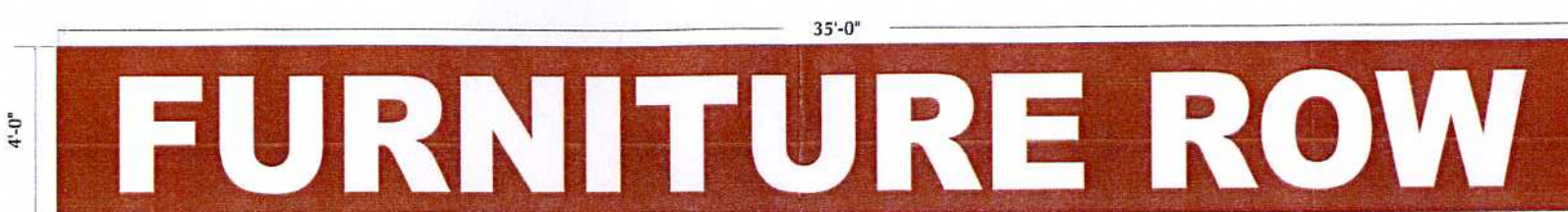
SIGN TO BE ILLUMINATED WITH FLOURESCENT LAMPS.  
120 VOLTS



www.capitolsgnco.com  
3421 N. 35TH STREET • LINCOLN, NE 68504

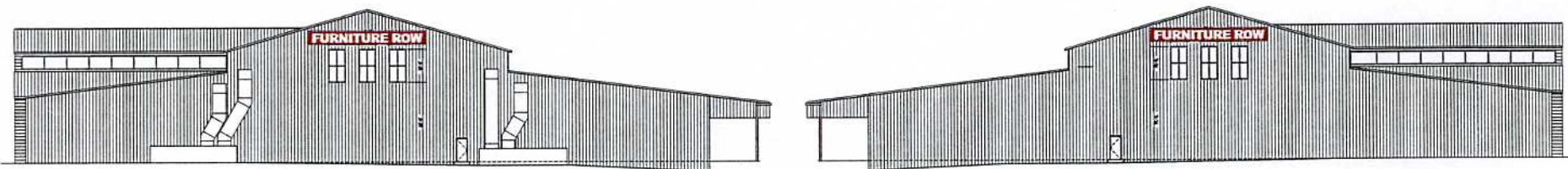
(800) 539-4464  
(402) 466-7446  
FAX (402) 466-2157

|            |                       |              |              |
|------------|-----------------------|--------------|--------------|
| JOB TITLE: | FURNITURE ROW         | REVISION#    |              |
| LOCATION:  | RAPID CITY, SD        | OPTION#      | 1            |
| DESIGN #   | 4029                  | SALES:       | TONY AHMED   |
| DATE:      | 12-05-06              | DESIGNER:    | TONY PERSONS |
| SCALE:     | 1/4" = 1' & 1/8" = 1' | APPROVED BY: |              |

**SPECIFICATIONS:**

FABRICATE AND INSTALL (2) NEW, ILLUMINATED, SINGLE-FACED WALL SIGN. FACE TO BE FLEX WITH CUSTOM TERRA COTTA COLORED GRAPHICS ON FACE.

-277 VOLT



END WALL ELEVATIONS

**CAPITOL SIGN**  
company

[www.capitolsignco.com](http://www.capitolsignco.com)

3421 N. 35TH STREET • LINCOLN, NE 68504



(800) 539-4464  
(402) 466-7446  
FAX (402) 466-2157

JOB TITLE: FURNITURE ROW

LOCATION: RAPID CITY

DESIGN # 4029

DATE: 5-11-07

SCALE: 3/8" = 1'

REVISION#

OPTION# 1

SALES: TONY AHMED

DESIGNER: TONY PERSONS

APPROVED BY: \_\_\_\_\_