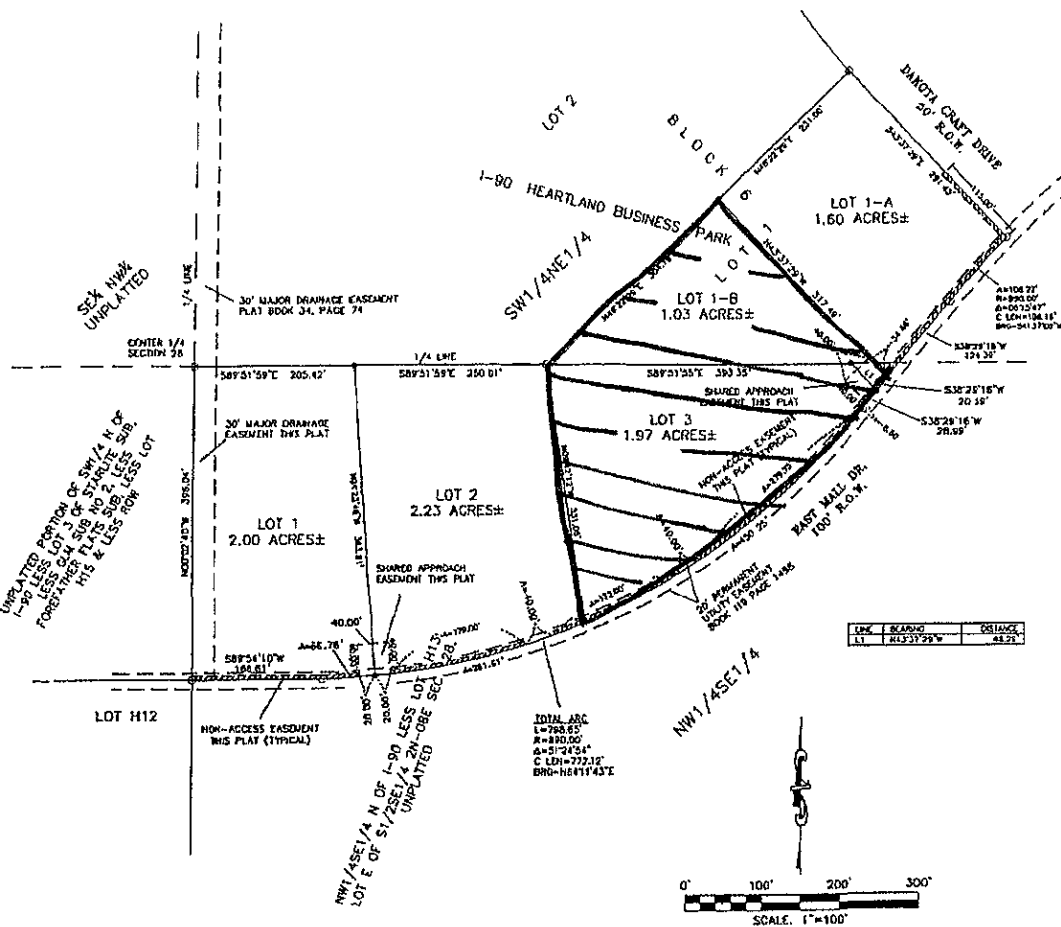


PLAT OF MALL DRIVE SUBDIVISION, LOTS ~~1, 2 AND 3,~~  
 PART OF THE UNPLATTED PORTION OF NW1/4SE1/4 NORTH OF I-90 EXCEPTING LOT H13 AND LOT E OF S1/2SE1/4  
 AND  
 I-90 HEARTLAND BUSINESS PARK, LOTS ~~1-A AND 1-B,~~ BLOCK 6  
 FORMERLY LOT 1, BLOCK 6 OF I-90 HEARTLAND BUSINESS PARK AND  
 PART OF THE UNPLATTED PORTION OF NW1/4SE1/4 NORTH OF I-90 EXCEPTING LOT H13 AND LOT E OF S1/2SE1/4  
 ALL LOCATED IN T11F NW1/4SE1/4 AND SW1/4NE1/4 OF SECTION 28 IN T2N, R8E, E.H.M.,  
 CITY OF RAPID CITY, PENNINGTON COUNTY, SOUTH DAKOTA.



- NOTES:**
- MINOR DRAINAGE AND UTILITY EASEMENTS ARE HEREBY ESTABLISHED 8' WIDE ON THE INTERIOR SIDE OF ALL LOT LINES AND RIGHT-OF-WAY.
  - TOTAL PLATTED AREA = 8.83 ACRES±.  
 TOTAL R.O.W. AREA = 0.00 ACRES±.  
 TOTAL LOTS AREA = 8.83 ACRES±.  
 REMAINING AREA OF UNPLATTED PORTION OF NW1/4SE1/4 NORTH OF I-90 EXCEPTING LOT H13 AND LOT E OF S1/2SE1/4, SECTION 28 = 33.05 ACRES±
  - NON-ACCESS EASEMENTS ARE HEREBY ESTABLISHED ALONG THE CORNER LOTS AND AS INDICATED HEREON.
  - ALL BUILDERS SHALL MAINTAIN EXISTING DRAINAGE FACILITIES IN ACCORDANCE TO APPROVED CONSTRUCTION PLANS
  - ACREAGE SHOWN ON LOTS INCLUDE EASEMENTS.
  - EXISTING TEMPORARY EASEMENTS ARE NOT SHOWN HEREON.
  - BASIS OF BEARING FOR THIS PLAT IS GLOBBE'S NORTH