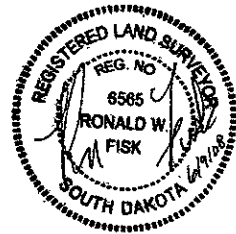


December 17, 2007
 Revised May 22, 2008
 Revised June 6, 2008
 Elevations from
 City Benchmark Network
 Datum NAD83
 Basis of Bearings
 GPS Observation

LEGEND

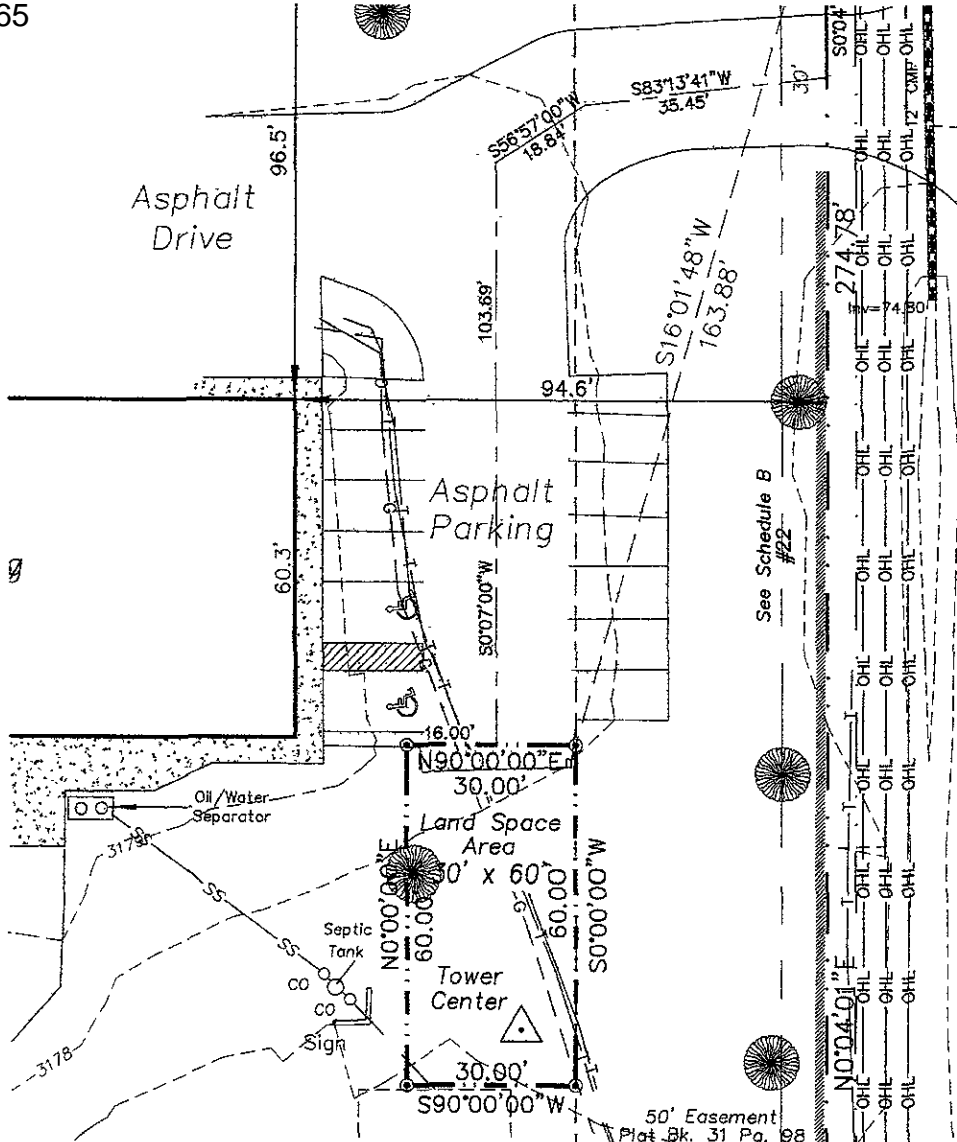
- ⊙ = Sanitary Sewer
- ⊙ = Manhole (Unless noted)
- ⊙ = Sanitary Sewer Service Line Cleanout
- ⊙ = Utility Pole
- ⊙ = Guy Wire
- ⊙ = Telephone Box
- ⊙ = Telecommunications Pedestal
- ⊙ = Sign
- ⊙ = Fence Line
- ⊙ = Underground Electric
- ⊙ = Overhead Utility Line
- ⊙ = Underground Telephone
- ⊙ = Fiber Optic Line
- ⊙ = Water Main
- ⊙ = Sanitary Sewer Line
- ⊙ = Natural Gas Line
- ⊙ = Found Survey Monument Monument as noted
- ⊙ = Set Rebar with cap marked "RW Fisk 6565"
- ⊙ = Tree (Deciduous)



Fisk Land Surveying & Consulting, Inc.
 1022 Main Street, P.O. Box 6765
 Rapid City, South Dakota 57709
 (605) 348-1838
 (605) 348-1112 (fx)

RCYC Perennial
 Lot 1 of North Haines Subdivision
 1290 Country Road
 Rapid City, South Dakota

Surveyed by	ML,BL
Date	12/17/07
Drawn by:	RWF
Checked by:	WF
Revisions	5/22/08 Land Space Area
	6/6/08 Schedule B references
Site Map	1" = 40'
	3 of 4
Project No	07-12-05



December 17, 2007
 Revised January 25, 2008
 Revised May 23, 2008
 Revised June 6, 2008

Elevations from
 City Benchmark Network
 Datum NGVD29
 Basis of Bearings
 GPS Observation

LEGEND

- ⊙ = Sanitary Sewer Manhole (Unless noted)
- ⊙ = Sanitary Sewer Service Line Cleanout
- ◇ = Utility Pole
- = Guy Wire
- ▣ = Telephone Box
- = Telecommunications Pedestal
- ▲ = Sign
- X— = Fence Line
- E— = Underground Electric
- OHL— = Overhead Utility Line
- T— = Underground Telephone
- FO— = Fiber Optic Line
- W— = Water Main
- SS— = Sanitary Sewer Line
- NG— = Natural Gas Line
- = Found Survey Monument Monument as noted
- ⊙ = Set Rebar with cap marked "RW Fisk 6565"
- ⊙ = Tree (Deciduous)



143rd Avenue (Asphalt)

See Schedule B #22

50' Easement
 Plat Bk. 31 Pg. 98

Fisk Land Surveying & Consulting Engineers, Inc.
1025 Main Street (P.O. Box 8154)
 Rapid City, South Dakota 57709
 (605) 343-1122 (fax)

RCYC Perennial
 Lot 1 of North Haines Subdivision
 1290 Country Road
 Rapid City, South Dakota

Surveyed by:	ML,BL
Date	12/17/07
Drawn by:	RWF
Checked by:	WF
Revisions	1/25/08 Sheet 4 5/22/08 Land Space Area 6/6/08 Schedule B references
Site Map	1"=20'
	4
	4
Project No.	07-12-05