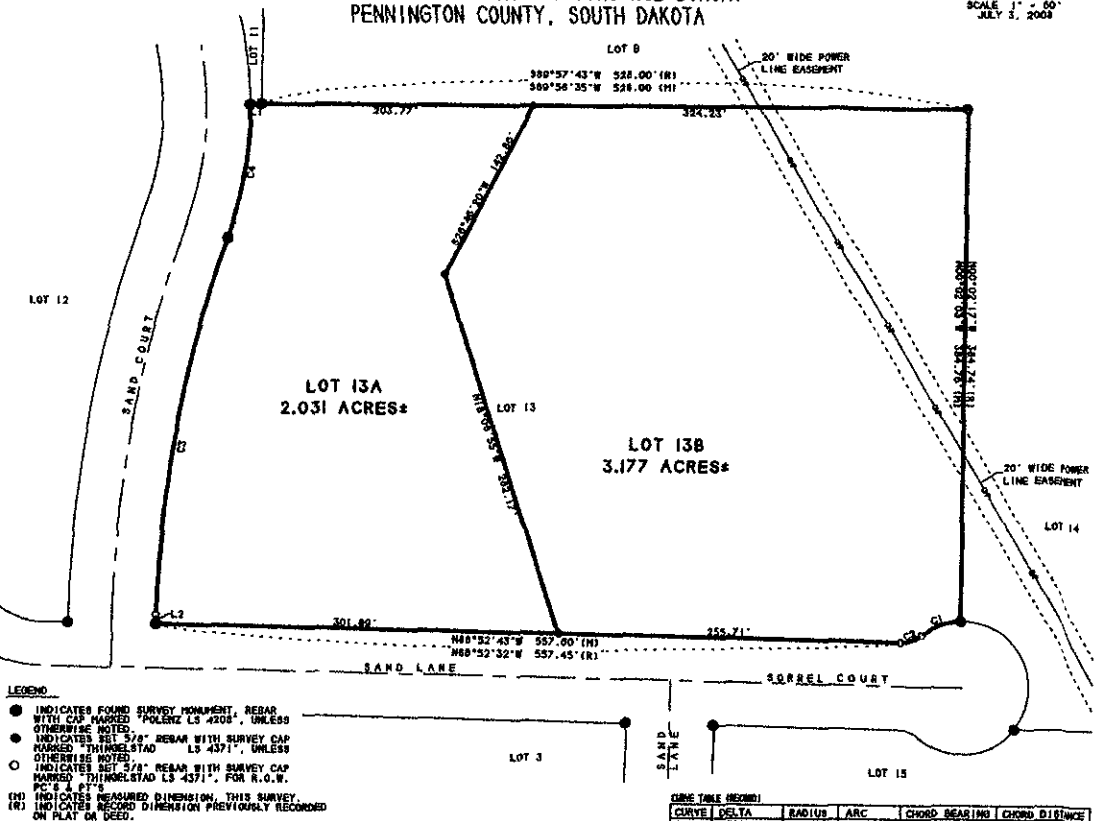


LOT 13A & LOT 13B HIGH SHERIDAN RANCH SUBDIVISION
(FORMERLY LOT 13 OF HIGH SHERIDAN RANCH SUBDIVISION)
LOCATED IN SECTION 35, T1N. R6E B.H.M.
PENNINGTON COUNTY, SOUTH DAKOTA



SCALE 1" = 60'

JULY 3, 2008



LEGEND

- INDICATES FOUND SURVEY MONUMENT, REBAR WITH CAP MARKED "POLYNS LS 4208", UNLESS OTHERWISE NOTED.
- INDICATES SET 5/8" REBAR WITH SURVEY CAP MARKED "THINDELSTAD LS 4371", UNLESS OTHERWISE NOTED.
- INDICATES SET 5/8" REBAR WITH SURVEY CAP MARKED "THINDELSTAD LS 4371", FOR R.O.W. PC'S & PT'S.
- (R) INDICATES MEASURED DIMENSION, THIS SURVEY.
- (P) INDICATES RECORD DIMENSION PREVIOUSLY RECORDED ON PLAT OR DEED.

BASES OF BEARINGS BY GLOBAL POSITIONING SYSTEM (GPS) OBSERVATIONS.

8' WIDE UTILITY AND MINOR DRAINAGE EASEMENTS ALONG ALL INTERIOR FRONT, SIDE AND BACK LOT LINES.

ANY MAJOR DRAINAGE EASEMENT SHOWN HEREON SHALL BE KEPT FREE OF ALL OBSTRUCTIONS INCLUDING BUT NOT LIMITED TO BUILDINGS, WALLS, FENCES, HEDGES, TREES AND SHRUBS. THESE EASEMENTS GRANT TO ALL PUBLIC AUTHORITIES THE RIGHT TO CONSTRUCT, OPERATE, MAINTAIN, IMPROVE AND REPAIR SUCH IMPROVEMENTS AND STRUCTURES AS IT DEEMS EXPEDIENT TO FACILITATE DRAINAGE FROM ANY SOURCE.

OWNER'S CERTIFICATE
STATE OF SOUTH DAKOTA
COUNTY OF PENNINGTON s.s.

WE, KATHY RAYE AND BARBARA RAYE, DO HEREBY CERTIFY THAT WE ARE THE OWNER OF THE LAND SHOWN AND DESCRIBED HEREON, THAT THE SURVEY WAS DONE AT MY REQUEST FOR THE PURPOSE INDICATED HEREON, THAT I DO APPROVE THE SURVEY AND WITHIN PLAT OF SAND LAKE, AND THAT THE DEVELOPMENT OF THIS LAND SHALL CONFORM TO ALL EXISTING APPLICABLE ZONING, SUBDIVISION, AND EROSION AND SEDIMENT CONTROL REGULATIONS.

ANY LAND SHOWN ON THE WITHIN PLAT AS DEDICATED TO PUBLIC RIGHT-OF-WAY IS HEREBY DEDICATED TO PUBLIC USE AND PUBLIC UTILITY USE AS SUCH, HOWEVER, BUT SUCH DEDICATION SHALL NOT BE CONSTRUED TO BE A DONATION OF THE FEE OF SUCH LAND.

CURVE TABLE (RECORD)

CURVE	DELTA	RADIUS	ARC	CHORD BEARING	CHORD DISTANCE
C1	38°19'49"	50.00'	31.70'	S69°56'33"W	31.13'
C2	39°20'45"	25.00'	17.17'	N21°27'01"E	16.65'
C3	17°52'38"	920.71'	287.37'	S10°05'42"W	286.10'
C4	29°03'10"	265.00'	182.30'	N08°54'22"E	182.03'

CURVE TABLE (RECORD)

CURVE	DELTA	RADIUS	ARC	CHORD BEARING	CHORD DISTANCE
C1	36°21'38"	49.87'	31.71'	S69°54'26"W	31.18'
C2	39°20'49"	25.01'	17.17'	N21°26'54"E	16.64'
C3	17°52'38"	921.40'	287.48'	S10°06'10"W	286.33'
C4	29°03'16"	265.16'	182.37'	N08°54'01"E	181.83'

LINE TABLE (RECORD)

LINE	BEARING	DISTANCE
L1	S89°57'43"W	526.00'
L2	N01°07'54"W	7.00'

LINE TABLE (RECORD)

LINE	BEARING	DISTANCE
L1	S89°57'50"W	526.00'
L2	S01°08'52"W	7.01'