

# BANK WEST- RAPID CITY



NORTH ELEVATION



WEST ELEVATION



SOUTH ELEVATION



EAST ELEVATION



HEBRON BRICK:

MAROON



STONE TO MATCH

DEVELOPMENT



METAL ROOF:

COLONIAL RED



METAL FLASHING:

ROMAN BRONZE



SILL STONE

COLOR: WHEAT

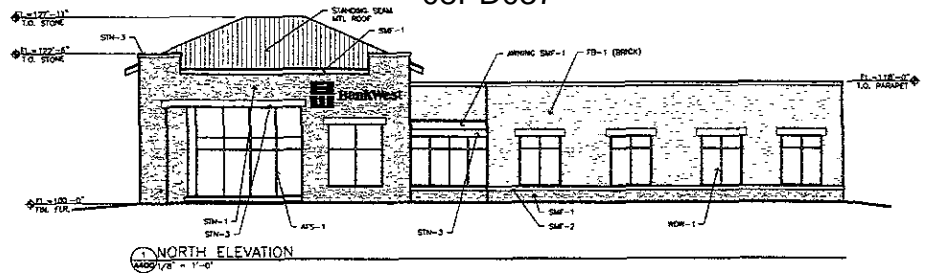


EIFS COLOR

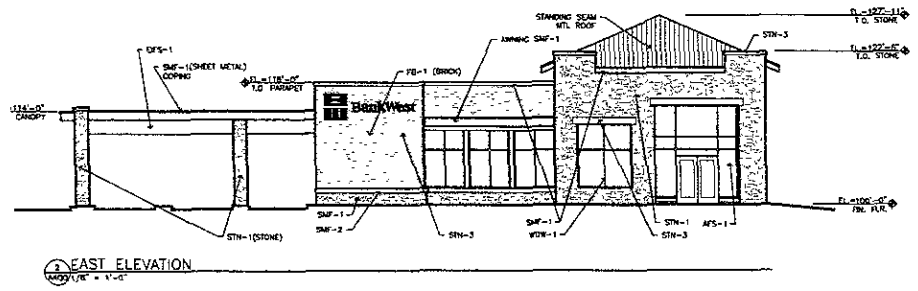
## RECEIVED

JUL 29 2008

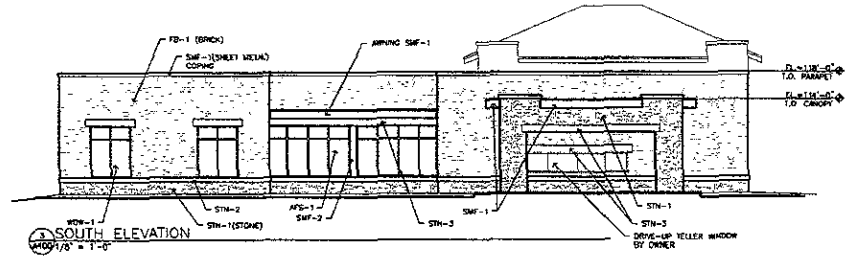
Rapid City Growth  
Management Department



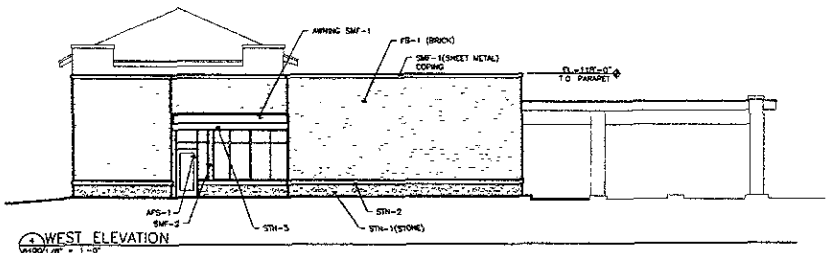
1 NORTH ELEVATION  
1/8" = 1'-0"



2 EAST ELEVATION  
1/8" = 1'-0"



3 SOUTH ELEVATION  
1/8" = 1'-0"



4 WEST ELEVATION  
1/8" = 1'-0"

**BANKWEST MATERIAL PALETTE**

STONE	STN-1	THIN VENEER MANUFACTURED STONE, COLOR AND TYPE TO MATCH DEVELOPMENT STANDARD
	STN-2	MANUFACTURED STONE, ARCHESHAFT COLOR, WHEAT FINISH, DRESSED
	STN-3	MANUFACTURED STONE, ARCHESHAFT COLOR, WHEAT FINISH, ROCKED
BRICK	FB-1	MODULAR BRICK, BOLD CITY BRICK COLOR, CAMBRIDGE VELOUR
METAL TRIM	SMF-1	UNPA-COAT COLOR: ROMAN BRONZE
METAL ROOF	SMR-1	STANDING SEAM METAL ROOF, PREFINISHED SHEET METAL, UNPA-COAT: TERRA COTTA
WINDOWS	AFS-1	EXTERIOR STOREFRONTS, COLOR: BRONZE
	NOW-1	WOOD METAL CLAD COLOR: BRONZE

Architecture  
Interior Design  
Landscape Architecture  
Engineering

**Boorman  
Kroos  
Vogel  
Group  
Inc.**

222 North Second Street  
Minneapolis MN 55401  
Telephone: 612-339-3752  
Facsimile: 612-339-6212  
[www.bkvgroup.com](http://www.bkvgroup.com)

CITY SUBMITTAL  
JULY 11, 2008

Bank West – Rapid  
City

**CERTIFICATION**

I hereby certify that this plan, specification or report was prepared by me or under my direct supervision and that I am a duly Licensed Professional Engineer under the laws of the State of Minnesota.

License Number		Date	
REVISIONS	No.	DATE	
DATE	07-11-08		
DRAWN BY	BOOR		
CHECKED BY	ESP		
COMPRESSION NO.	116110		

EXTERIOR  
ELEVATIONS

**A400**