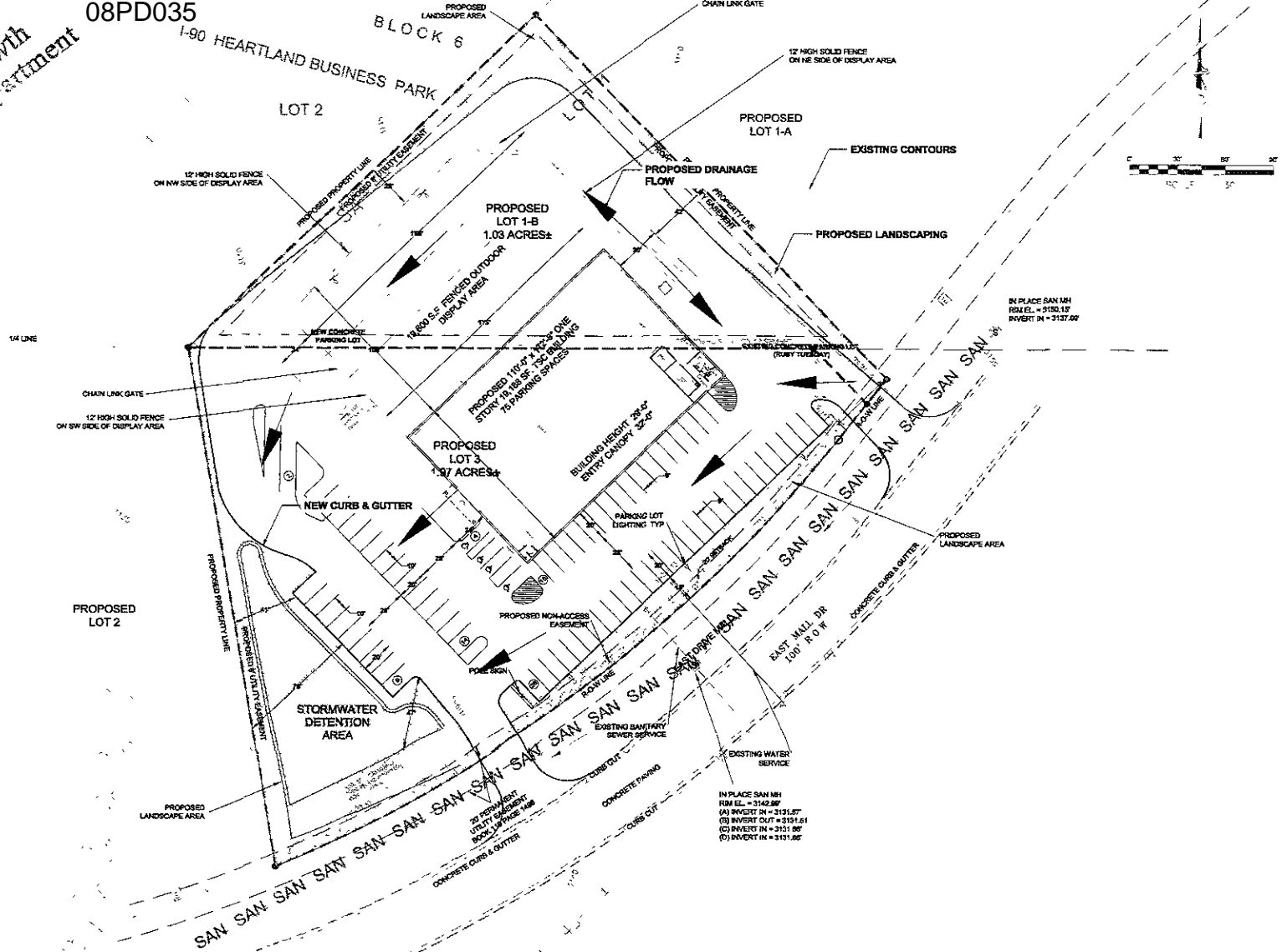


JUL 14 2008
 Rapid City Growth
 Management Department

08PD035



INITIAL PLANNED DEVELOPMENT

T.C. ENGINEERING INC.
 NORTH PLATE, NEBRASKA

TRACTOR SUPPLY COMPANY
 Rapid City, South Dakota

PROJECT	NO. 08PD035
DATE	7/7/08
DRAWN BY	BRB
CHECKED BY	BRB
DATE	7/7/08
TITLE	INITIAL PLANNED DEVELOPMENT
SCALE	As Shown
SHEET	1