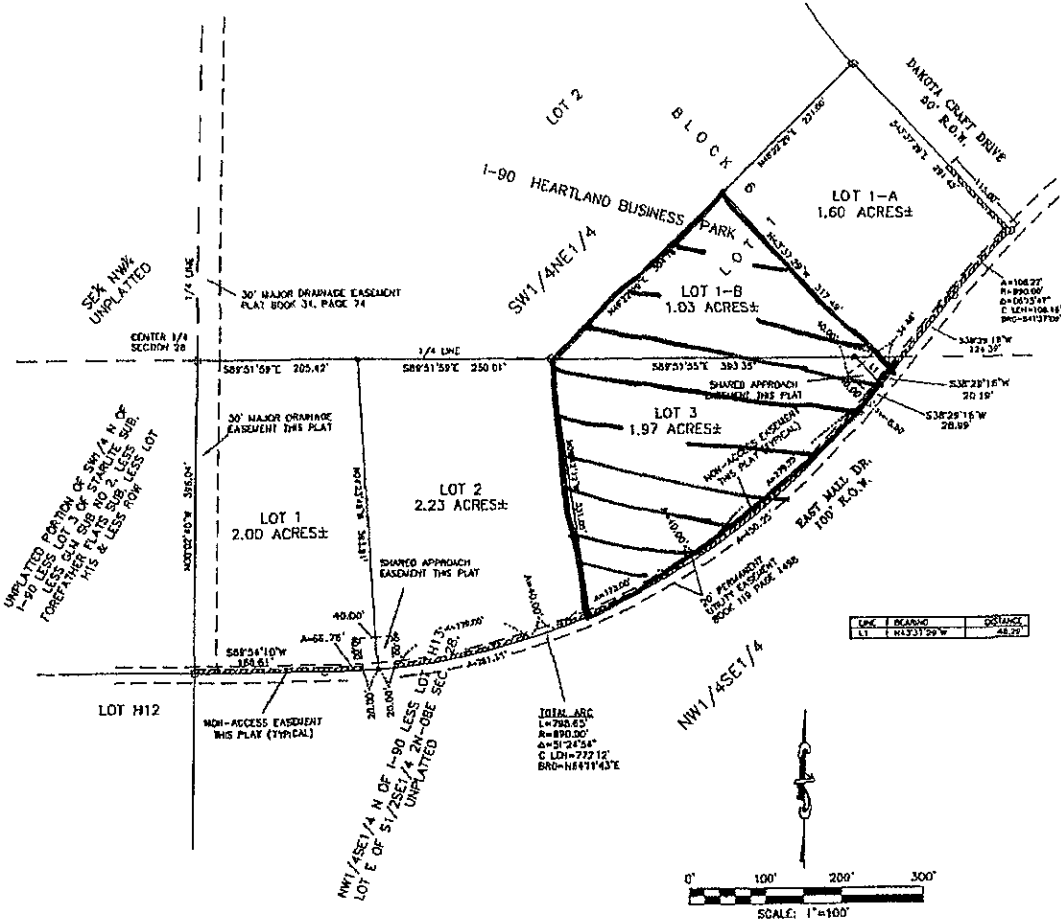


08CA026

PLAT OF MALL DRIVE SUBDIVISION, LOTS 1, 2 AND 3,
 PART OF THE UNPLATTED PORTION OF NW1/4SE1/4 NORTH OF I-90 EXCEPTING LOT H13 AND LOT E OF S1/2SE1/4
 AND
 I-90 HEARTLAND BUSINESS PARK, LOTS 1-A AND 1-B, BLOCK 6
 FORMERLY LOT 1, BLOCK 6 OF I-90 HEARTLAND BUSINESS PARK AND
 PART OF THE UNPLATTED PORTION OF NW1/4SE1/4 NORTH OF I-90 EXCEPTING LOT H13 AND LOT E OF S1/2SE1/4
 ALL LOCATED IN THE NW1/4SE1/4 AND SW1/4NE1/4 OF SECTION 28 IN T2N, R5E, B.H.M.,
 CITY OF RAPID CITY, PENNINGTON COUNTY, SOUTH DAKOTA



LINE	BEARING	DISTANCE
11	N45°31'29"W	48.75'

DATA ARC
 L=780.63'
 R=890.00'
 A=91°24'54"
 C LDI=772'12"
 BRG=N44°14'3"E

0' 100' 200' 300'
 SCALE: 1"=100'