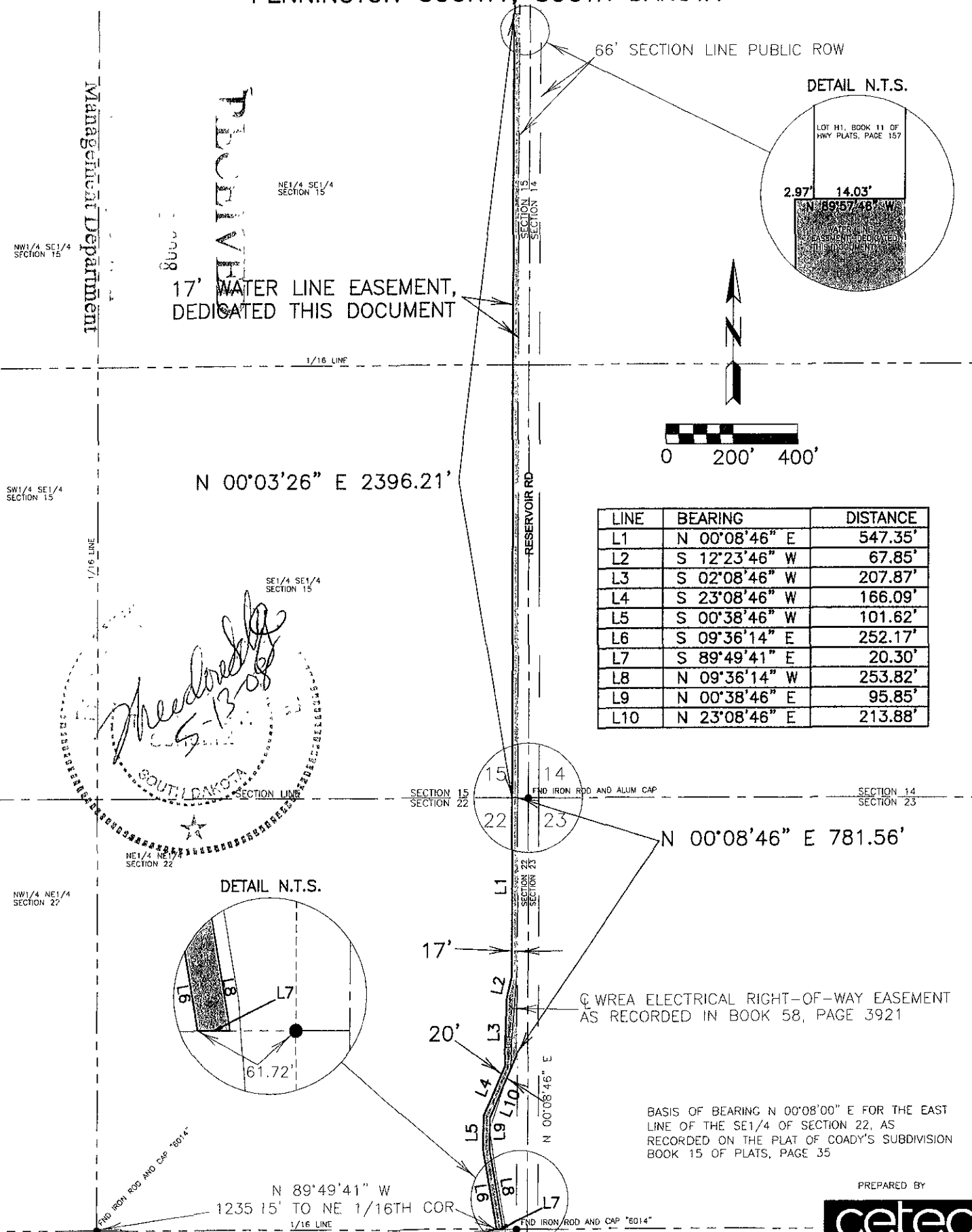


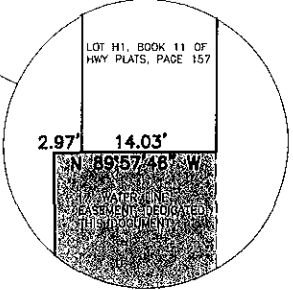
# EXHIBIT "A"

PERMANENT WATER MAIN EASEMENT IN THE E1/2 SE1/4 SECTION 15,  
AND NE1/4 NE1/4 SECTION 22, T1N, R8E, BHM.  
PENNINGTON COUNTY, SOUTH DAKOTA

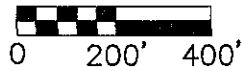


66' SECTION LINE PUBLIC ROW

DETAIL N.T.S.



17' WATER LINE EASEMENT,  
DEDICATED THIS DOCUMENT

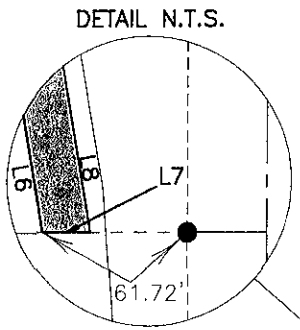


N 00°03'26" E 2396.21'

LINE	BEARING	DISTANCE
L1	N 00°08'46" E	547.35'
L2	S 12°23'46" W	67.85'
L3	S 02°08'46" W	207.87'
L4	S 23°08'46" W	166.09'
L5	S 00°38'46" W	101.62'
L6	S 09°36'14" E	252.17'
L7	S 89°49'41" E	20.30'
L8	N 09°36'14" W	253.82'
L9	N 00°38'46" E	95.85'
L10	N 23°08'46" E	213.88'

*Handwritten signature: Meadows*  
5-13-08  
SOUTH DAKOTA  
SECTION LINE

N 00°08'46" E 781.56'



WREA ELECTRICAL RIGHT-OF-WAY EASEMENT  
AS RECORDED IN BOOK 58, PAGE 3921

BASIS OF BEARING N 00°08'00" E FOR THE EAST  
LINE OF THE SE1/4 OF SECTION 22, AS  
RECORDED ON THE PLAT OF COADY'S SUBDIVISION  
BOOK 15 OF PLATS, PAGE 35

N 89°49'41" W  
1235.15' TO NE 1/16TH COR  
1/16 LINE

PREPARED BY

