

EXHIBIT C

08SR033

01/03/2008 11:01
 Pennington County, South Dakota
 Donna M. Mayer Misc Real Est



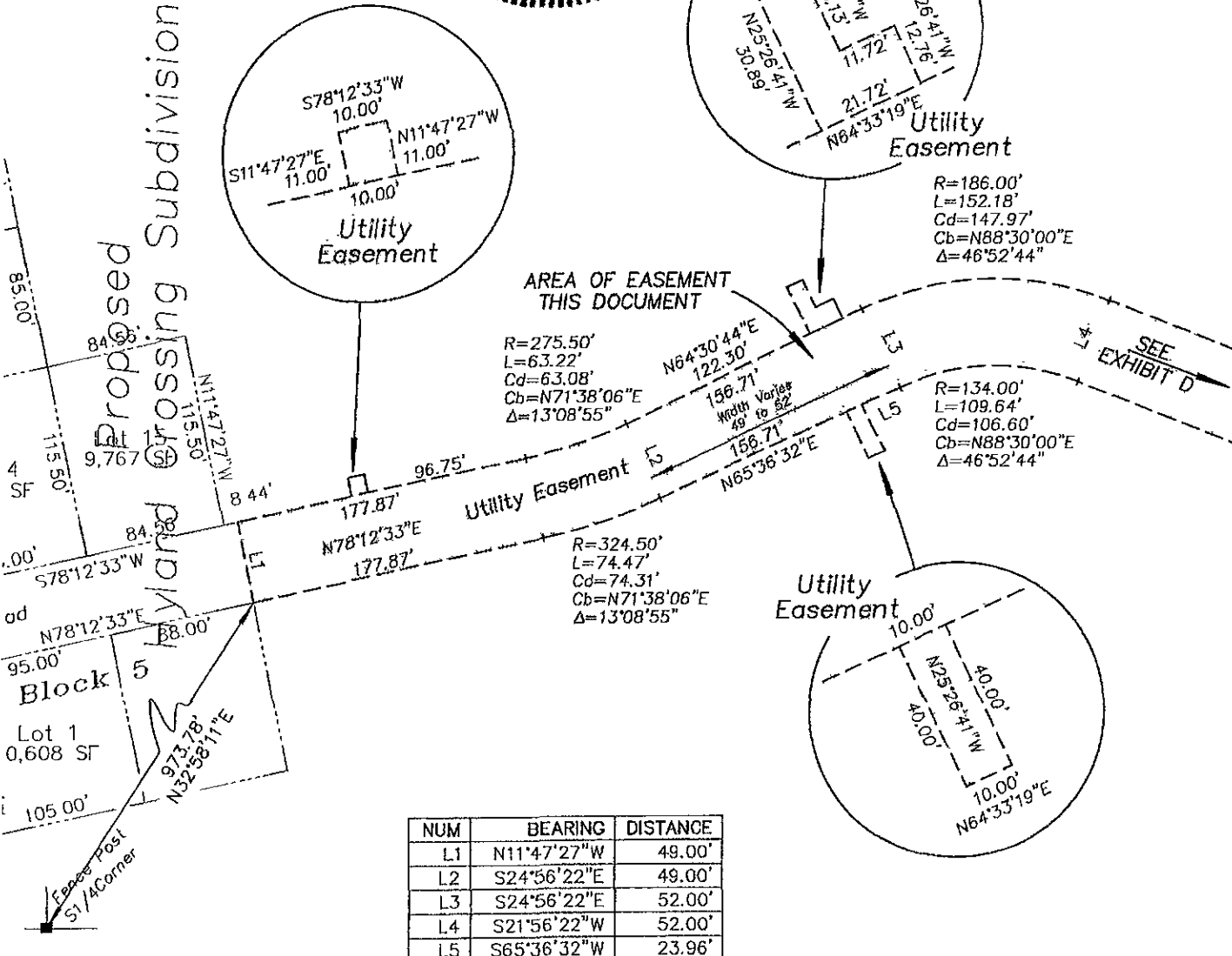
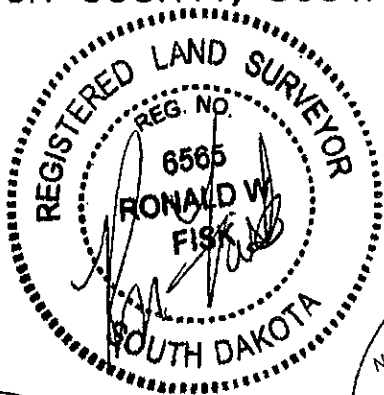
UTILITY EASEMENTS

LOCATED IN THE SE1/4 OF SECTION 35, T1N, R7E, BHM
 RAPID CITY, PENNINGTON COUNTY, SOUTH DAKOTA

1"=100'
 RECEIVED

MAR 9 2008

Rapid City, South Dakota
 Manager, Planning & Development

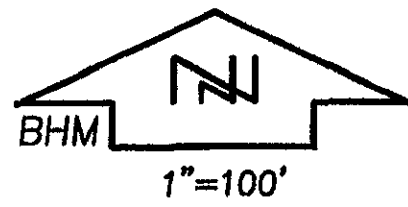


NUM	BEARING	DISTANCE
L1	N11°47'27"W	49.00'
L2	S24°56'22"E	49.00'
L3	S24°56'22"E	52.00'
L4	S21°56'22"W	52.00'
L5	S65°36'32"W	23.96'

EXHIBIT D

08SR033

01/03/2008 11:07a 32.00
Pennington County, South Dakota
Donna M. Mayer Misc Real Est



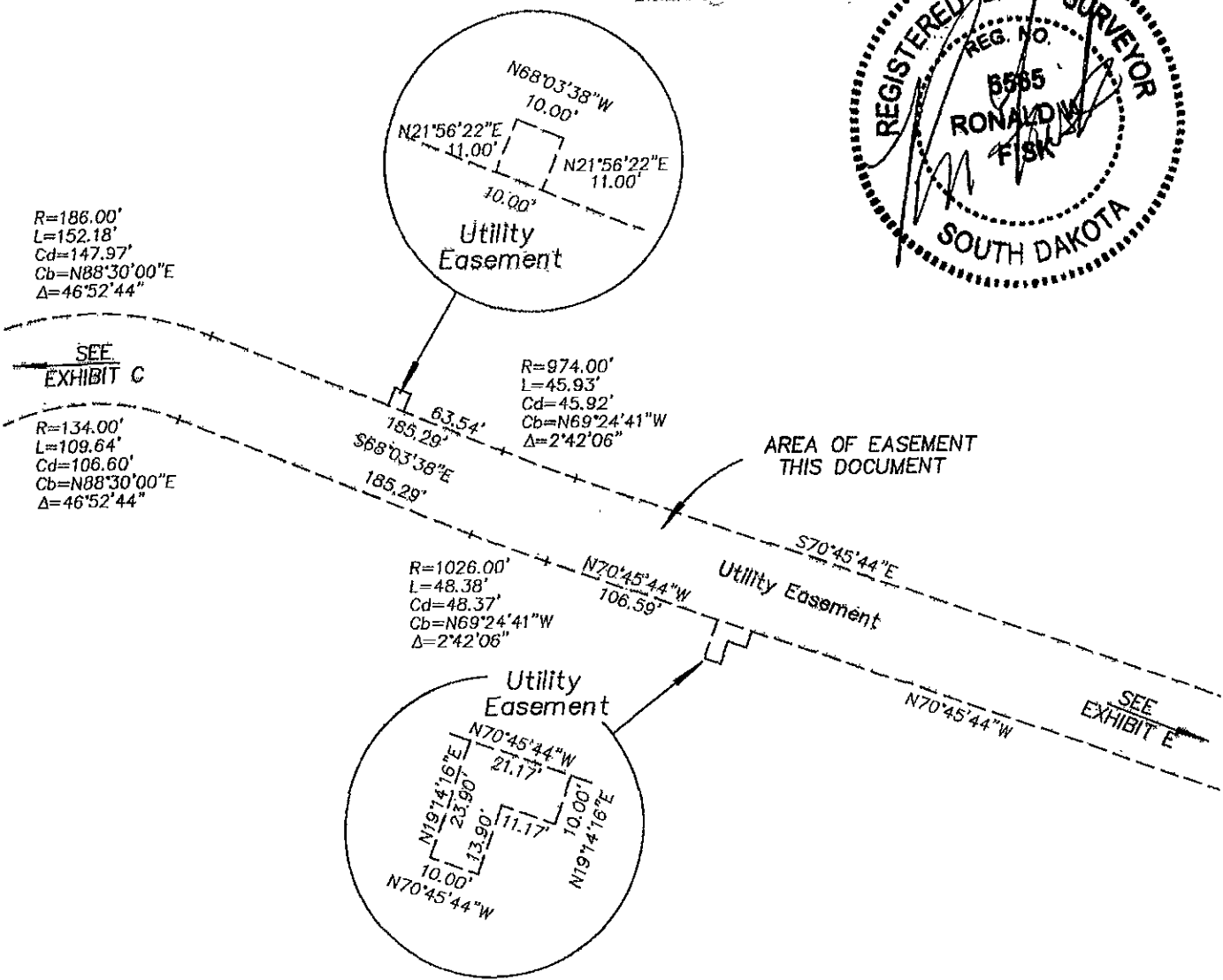
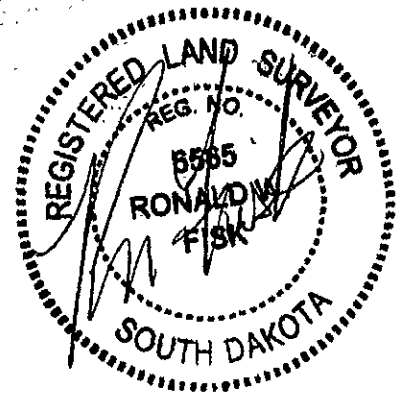
UTILITY EASEMENTS

LOCATED IN THE SE1/4 OF SECTION 35, T1N, R7E,
RAPID CITY, PENNINGTON COUNTY, SOUTH DAKOTA

RECEIVED

MAR 8 2008

Rapid City
Management



R=186.00'
L=152.18'
Cd=147.97'
Cb=N88°30'00"E
Δ=46°52'44"

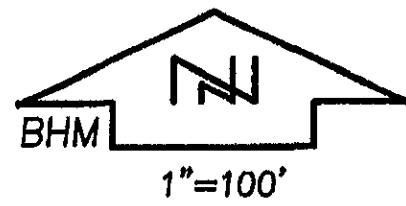
R=134.00'
L=109.64'
Cd=106.60'
Cb=N88°30'00"E
Δ=46°52'44"

R=974.00'
L=45.93'
Cd=45.92'
Cb=N69°24'41"W
Δ=2°42'06"

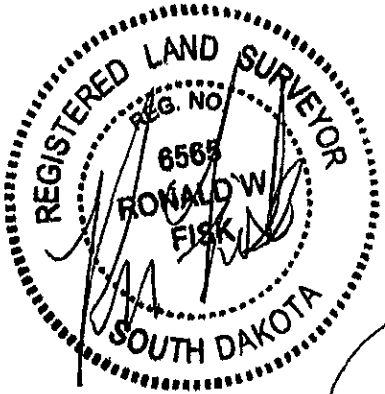
R=1026.00'
L=48.38'
Cd=48.37'
Cb=N69°24'41"W
Δ=2°42'06"

EXHIBIT E

08SR03301/03/2008 11:07a 32.00
Pennington County, South Dakota
Donna M. Mayer Misc Real Est



UTILITY EASEMENTS
LOCATED IN THE SE1/4 OF SECTION 35, T1N, R7E,
RAPID CITY, PENNINGTON COUNTY, SOUTH DAKOTA



SENT

RECEIVED

MAR 20 2008

Rapid City Growth
Management Department

