

RECEIVED

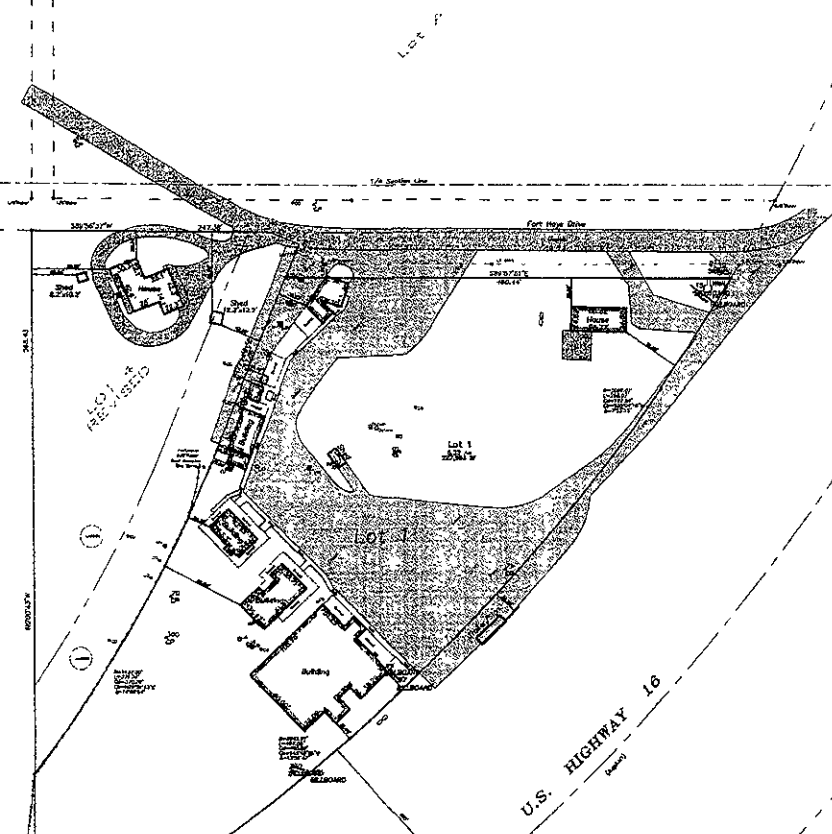
JUN 18 2008

Rapid City Growth

City of Rapid City Department



0 60 120  
1" = 60'  
March 18, 2008



LEGEND

- = Septic Tank Lid (unless otherwise noted)
- = Sanitary Sewer Service Line Cleanout
- = Barbed Wire Fence Line
- ◇ = Yard Hydrant
- ⊞ = Propane Tank
- = Found Survey Monument as noted
- ⊙ = Set Rebar with cap marked "RW Flak 6585"
- △ = Control Point

Boundary Survey and Site Plan  
Lot 1 of Fort Hayes Subdivision  
located in the NE 1/4, SE 1/4 of  
Section 34, T1N, R7E, B.H.M.  
Pennington County, South Dakota

1022 Main Street  
P.O. Box 816  
Rapid City, South Dakota  
57709  
Phone 348-1638  
FAX 348-1115 (t)

Fisk Land Surveying  
& Consulting  
Engineers, Inc.

Surveyed by MLB  
Date 3/21/08  
Drawn by RW  
Date 3/23/08  
Checked by RW  
Revisions  
March 18 2008

Project No.  
07-03-04

Sheet  
1  
of  
1

PRELIMINARY