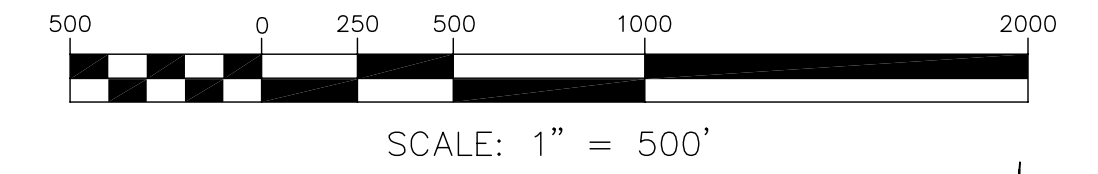
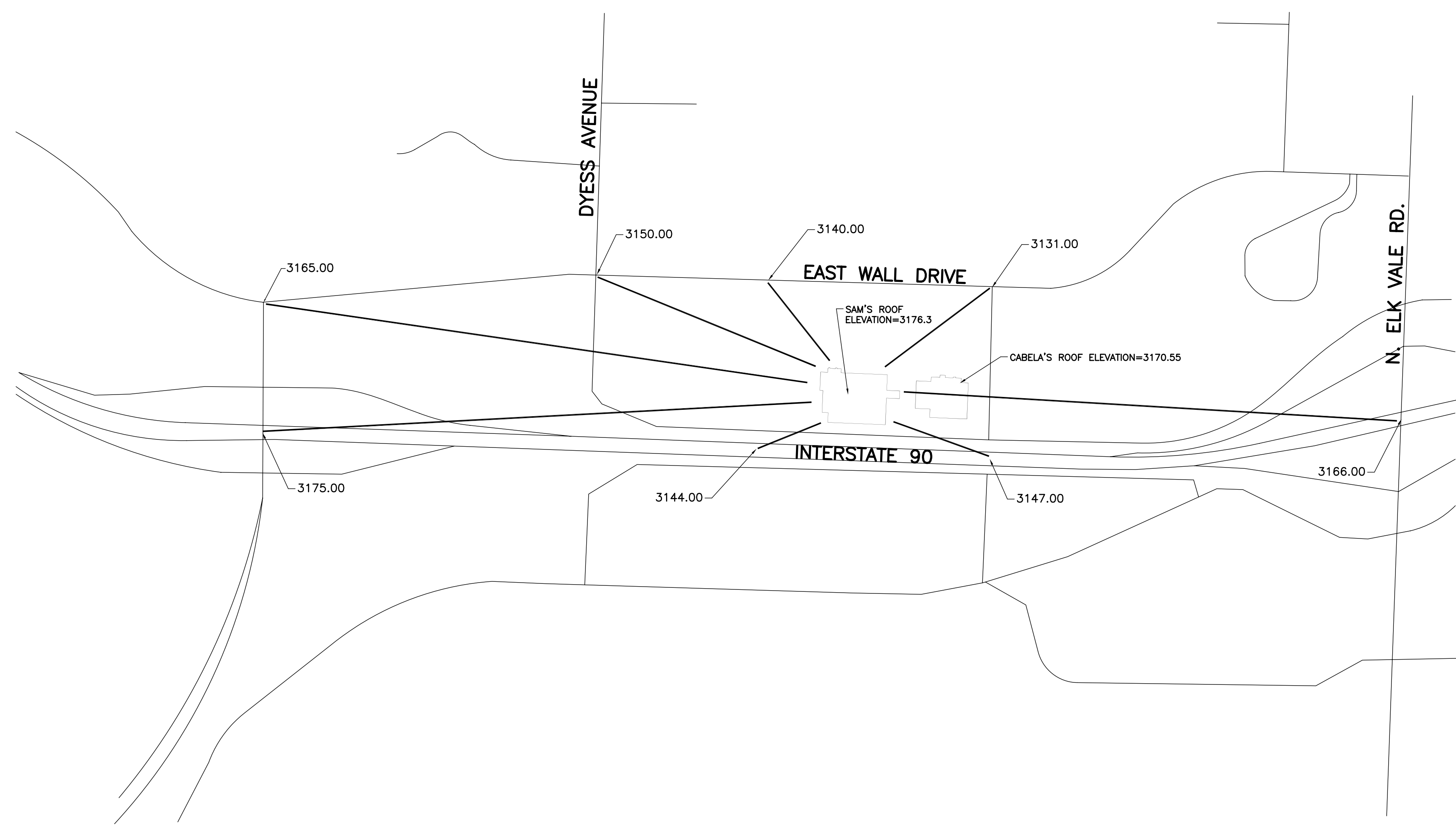
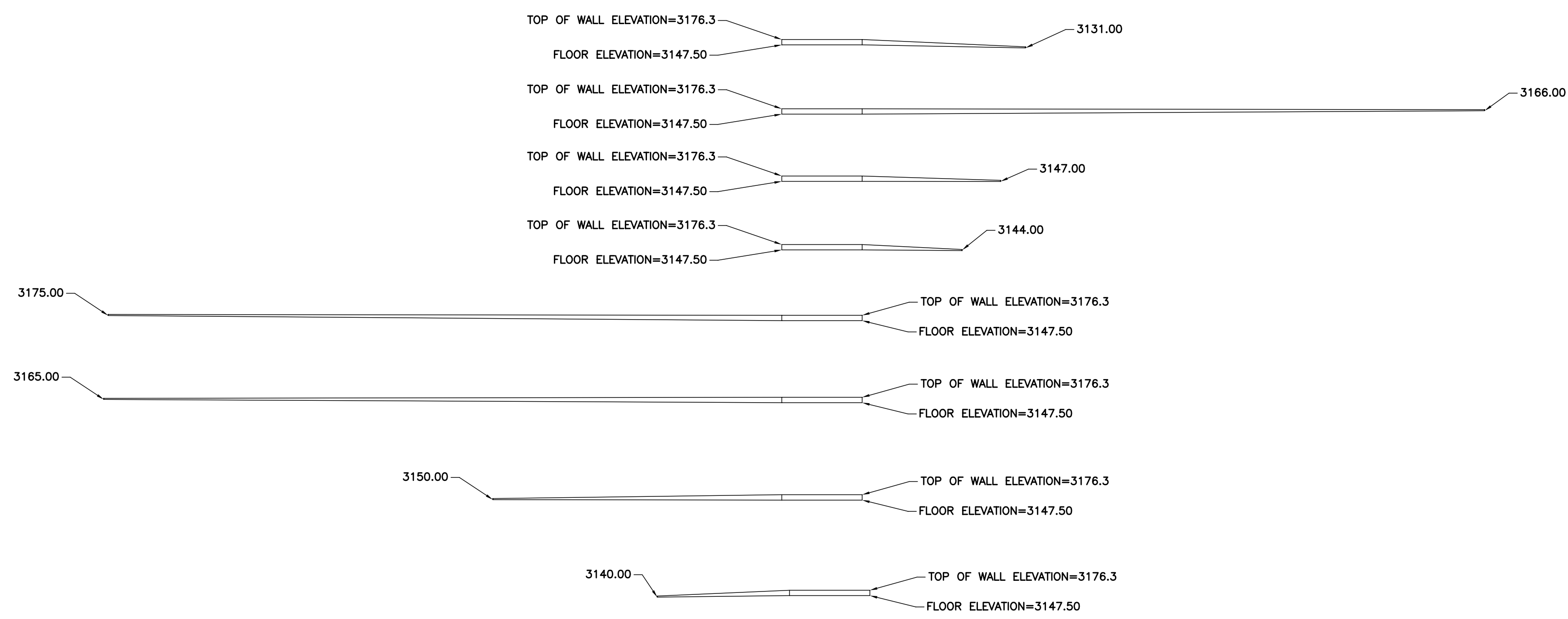


08PD020

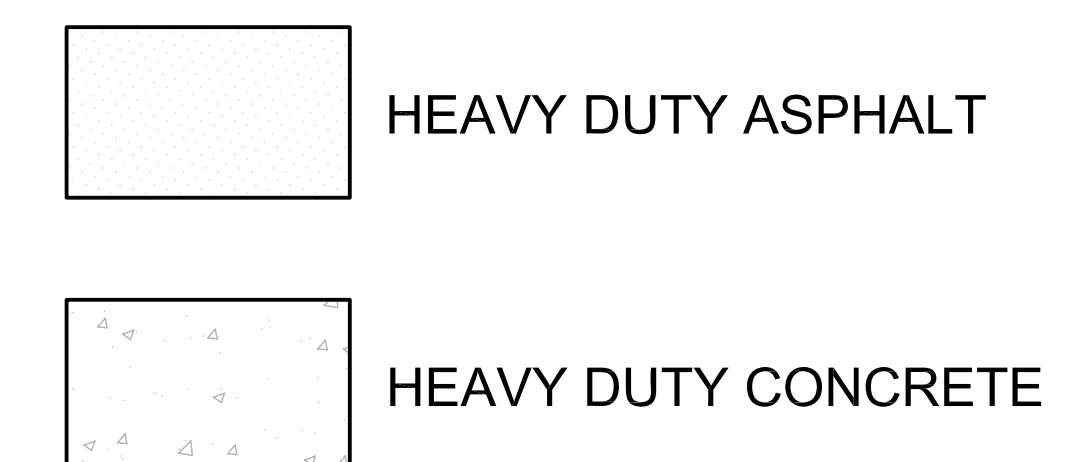
SITE LINE VIEW PLAN



REVISIONS	
1	By: X.X.X XX-XX-XX App: X.X.X
2	By: X.X.X XX-XX-XX App: X.X.X
3	By: X.X.X XX-XX-XX App: X.X.X
4	By: X.X.X XX-XX-XX App: X.X.X



PAVEMENT LEGEND



SITE PLAN LEGEND		
DESCRIPTION	PROPOSED	EXISTING
AERIAL ELECTRIC	— AE —	— AE —
UTILITY POLE	•	•
GUARD POST	• GP	• GP
SANITARY MANHOLE	• SM	• SM
CATCH BASIN	■ CB	■ CB
JUNCTION BOX	• JB	• JB
FLARED END SECTION	▢	▢
CLEANDUT	•	•
GRADED INLET	▢ GI	▢ GI
GUARD RAIL	— GR —	— GR —
CHAINLINK FENCE	— X — X — X —	— X — X — X —
BARBWIRE FENCE	— X — X — X —	— X — X — X —
WATER VALVE	•	•
FIRE HYDRANT	•	•
EASEMENT	— E —	— E —
PROPERTY LINE	— PL —	— PL —

All O.S.H.A. rules and regulations established for the type of construction required by these plans shall be strictly followed (i.e. Trenching, Blasting, etc.)

Three working days prior to the start of any excavation on this site the Contractor shall contact 1-800-781-7474 for utility location information.

TELEPHONE: (636) 239-4751
BFA
 CONSULTING ENGINEERS-SURVEYORS
 www.bfaeng.com
 103 ELM STREET
 WASHINGTON, MISSOURI 63090

PRELIMINARY DRAWING
 FOR REVIEW PURPOSES ONLY
 NOT TO BE USED FOR CONSTRUCTION

SAM'S CLUB #6565-09
 RAPID CITY, PENNINGTON COUNTY, SD
 SAM'S WEST, INC. 2001 SE 10TH ST.
 BENTONVILLE, AR 72716

DRAWN
 S.J.L.
 CHECKED
 X.X.X.
 DATE
 6/30/08
 SCALE
 1"=500'
 JOB No.
 05-2831
 SHEET NAME
 SITE LINE VIEW PLAN

C:\Users\j2831\My Documents\08PD020\08PD020.dwg