



Rapid City, SD #6565 14 JULY 2008

## SIGHT LINE STUDY

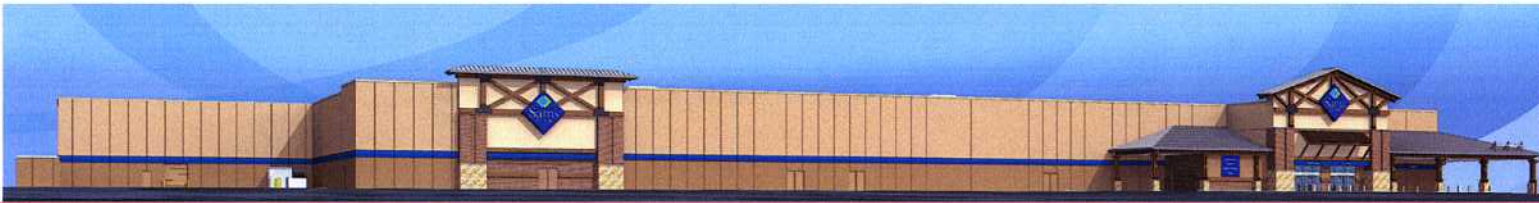


VIEW INDEX

View 1:  
Dist - 596.0 ft  
EL - 3140.00 ft  
Eye - 3145.00 ft  
(2.5 ft AFF)



View 2:  
Dist - 578.0 ft  
EL - 3136.00 ft  
Eye - 3141.00 ft  
(-6.5 ft AFF)



View 3:  
Dist - 270.0 ft  
EL - 3157.00 ft  
Eye - 3163.00 ft  
(14.5 ft AFF)



View 4:  
Dist - 260.0 ft  
EL - 3145.00 ft  
Eye - 3150.00 ft  
(2.5 ft AFF)



FOR AHJ REVIEW - CLIENT APPROVED  
Building images shown are an artistic representation of the design intent. Actual color or materials may vary from those shown due to final design detailing.  
NOTE FOR CONSTRUCTION

