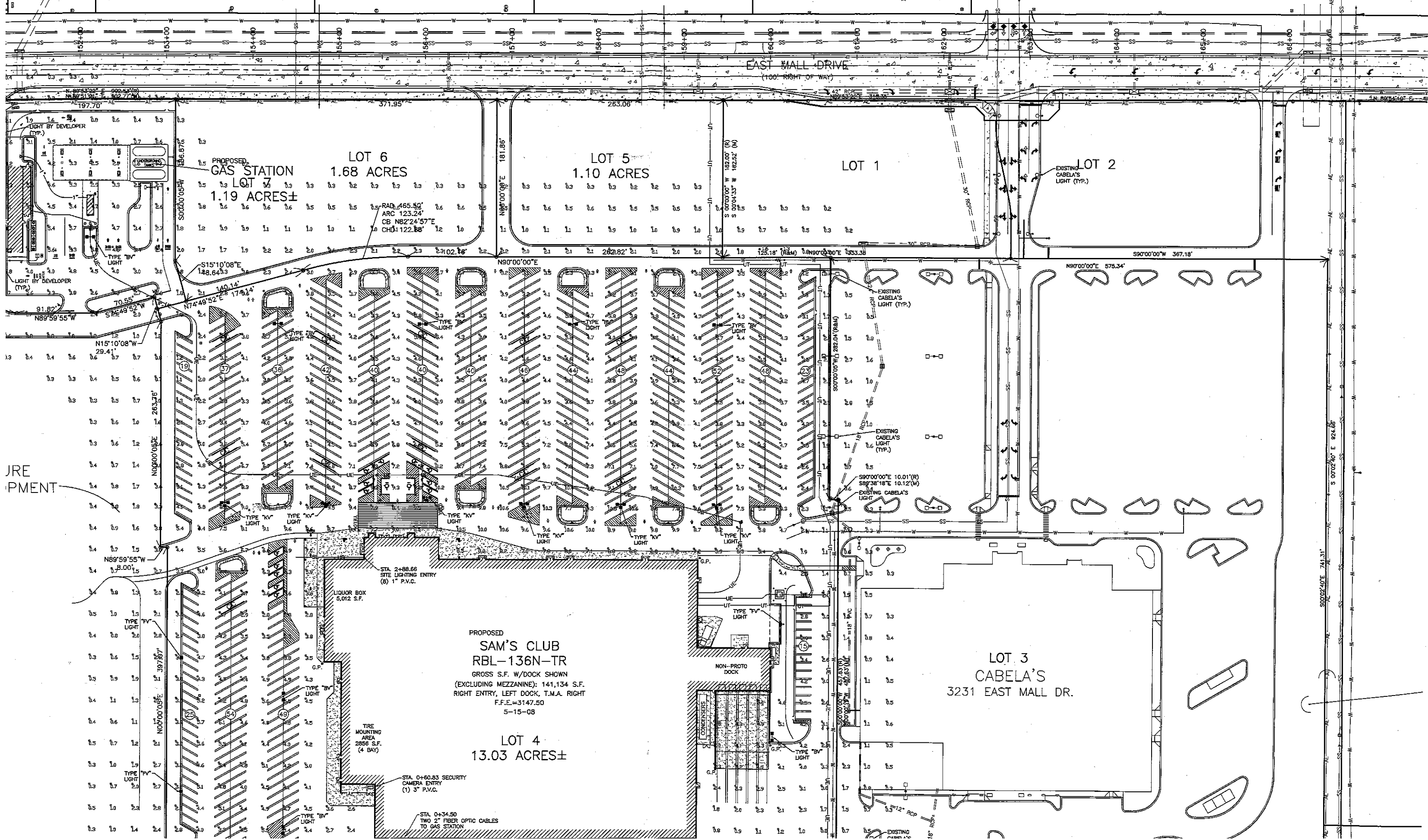




SCALE: 1" = 100'



PROPOSED GAS STATION LOT 7 1.19 ACRES±

LOT 6 1.68 ACRES

LOT 5 1.10 ACRES

LOT 1

LOT 2

PROPOSED SAM'S CLUB RBL-136N-TR GROSS S.F. W/DOCK SHOWN (EXCLUDING MEZZANINE): 141,134 S.F. RIGHT ENTRY, LEFT DOCK, T.M.A. RIGHT F.F.E.=3147.50 5-15-08

LOT 4 13.03 ACRES±

LOT 3 CABELA'S 3231 EAST MALL DR.

By:	1
By:	2
By:	3
By:	4

PRELIMINARY DRAWING

PRELIMINARY DRAWING

MINNAPAC COUNTY SD 6565-09