



Rapid City, SD #6565 30 MAY 2008



Front Elevation

- 10' H MASONRY SCREEN WALL W/ PRECAST CAP AT WALK AND RECYCLE AREA
- SMOOTH FACE C. M.U. PAINT SW HWS "SENSATIONAL SAND"
- E.I.S. PAINT SW HWS "PRACTICAL BEIGE"
- STANDING SEAM METAL ROOF "LEAD-COPE"
- GLUE LAM WOOD STRUCTURE
- SPLIT FACE C. M.U. PAINT SW HWS "DUTCH COCCOA"
- SHEET METAL COPING PAINT SW HWS "SENSATIONAL SAND"
- STANDING SEAM METAL ROOF "LEAD-COPE"
- E.I.S. PAINT SW HWS "PRACTICAL BEIGE"
- GLUE LAM WOOD STRUCTURE
- E.I.S. PAINT SW HWS "HONORABLE BLUE"
- STEEL TUBE COLUMN W/ DECK WOOD WRAPPING

Rear Elevation

- SMOOTH FACE C. M.U. PAINT SW HWS "TOASTY"
- W. H. DOORS AND FRAMES PAINT SW HWS "DUTCH COCCOA"
- SPLIT FACE C. M.U. PAINT SW HWS "TOASTY"
- W. H. DOORS AND FRAMES PAINT SW HWS "TOASTY"
- SMOOTH FACE C. M.U. PAINT SW HWS "HONORABLE BLUE"
- SMOOTH FACE C. M.U. PAINT SW HWS "SENSATIONAL SAND"
- E.I.S. PAINT SW HWS "HONORABLE BLUE"
- E.I.S. PAINT SW HWS "PRACTICAL BEIGE"
- E.I.S. PAINT SW HWS "PRACTICAL BEIGE"
- METAL ROOF PAINT SW HWS "CHARCOAL"
- CENTURION STONE "BROWN RUSTIC"
- PRECAST CONCRETE BOLLARDS
- SMOOTH FACE C. M.U. PAINT SW HWS "SENSATIONAL SAND"
- SMOOTH FACE C. M.U. PAINT SW HWS "TOASTY"

Left Side Elevation

- SMOOTH FACE C. M.U. PAINT SW HWS "TOASTY"
- W. H. DOORS AND FRAMES PAINT SW HWS "TOASTY"
- SMOOTH FACE C. M.U. PAINT SW HWS "HONORABLE BLUE"
- CENTURION STONE "BROWN RUSTIC"
- W. H. DOORS AND FRAMES PAINT SW HWS "DUTCH COCCOA"
- SPLIT FACE C. M.U. PAINT SW HWS "DUTCH COCCOA"
- GLUE LAM WOOD STRUCTURE
- SMOOTH FACE C. M.U. PAINT SW HWS "TOASTY"
- STANDING SEAM METAL ROOF "LEAD-COPE"
- E.I.S. PAINT SW HWS "PRACTICAL BEIGE"
- E.I.S. PAINT SW HWS "HONORABLE BLUE"
- E.I.S. PAINT SW HWS "HONORABLE BLUE"

Right Side Elevation

- SMOOTH FACE C. M.U. PAINT SW HWS "TOASTY"
- 12' H MASONRY SCREEN WALL W/ PRECAST CAP AT WALK AND RECYCLE AREA
- SMOOTH FACE C. M.U. PAINT SW HWS "SENSATIONAL SAND"
- W. H. DOORS AND FRAMES PAINT SW HWS "TOASTY"
- SMOOTH FACE C. M.U. PAINT SW HWS "TOASTY"
- SPLIT FACE C. M.U. PAINT SW HWS "TOASTY"
- SMOOTH FACE C. M.U. PAINT SW HWS "HONORABLE BLUE"
- SHEET METAL COPING PAINT SW HWS "SENSATIONAL SAND"
- SMOOTH FACE C. M.U. PAINT SW HWS "TOASTY"

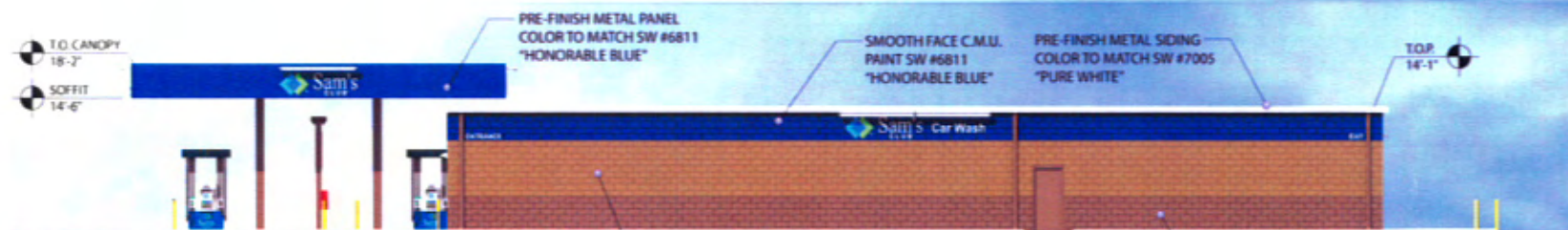
FOR AHJ REVIEW - CLIENT APPROVED
 Building images shown are an artistic representation of the design intent. Actual color or materials may vary from those shown due to final design detailing.
NOT FOR CONSTRUCTION

Shade
 Lawrence
 O'Quinn





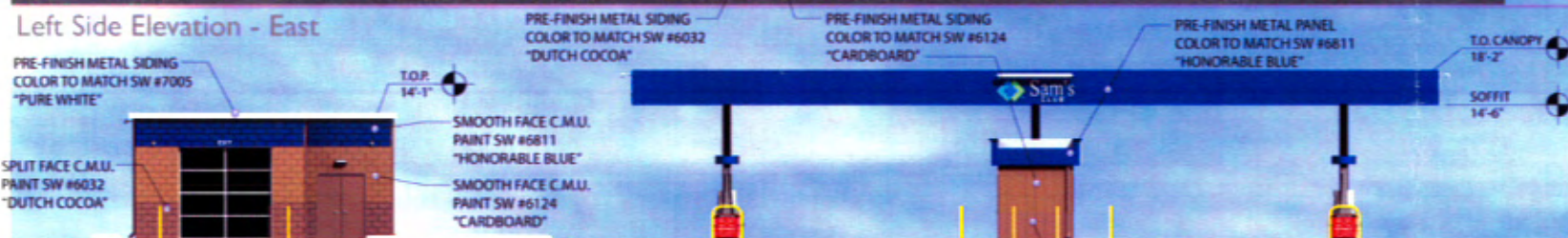
Rapid City, SD #6565 03 JUNE 2008



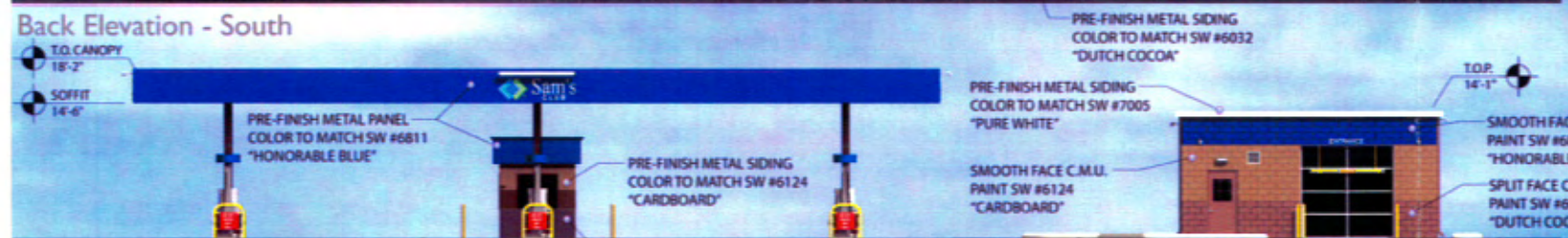
Right Side Elevation - West



Left Side Elevation - East



Back Elevation - South



Front Elevation - North



FOR AHJ REVIEW - CLIENT APPROVED
 Building images shown are an artistic representation of the design intent. Actual color or materials may vary from those shown due to final design detailing.
 NOT FOR CONSTRUCTION

Shade
 Lawrence O'Quinn