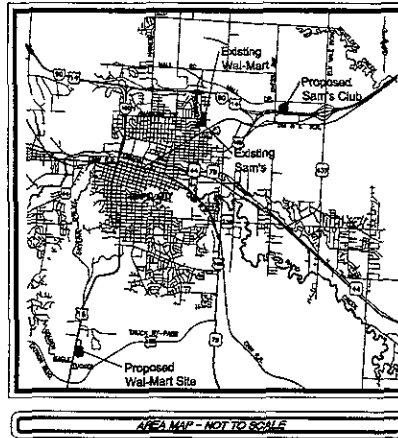


PROPOSED WAL-MART SUPERCENTER #3872-02 HWY. 16 SOUTH AND PROMISE RD. RAPID CITY, PENNINGTON COUNTY, SOUTH DAKOTA

UTILITY RESPONSIBILITY MATRIX FOR THIS PROJECT

UTILITY CONCERNING AGENCIES CONTACTS	CONTRACTOR RESPONSIBILITY--	OTHERS RESPONSIBILITY--
GAS SOUTH DAKOTA UTILITIES 714 WYCKE AVENUE RAPID CITY, SD 57701 CONTACT: JIM BARR PHONE: (605) 341-1884	COORDINATE CONSTRUCTION ACTIVITIES WITH GAS COMPANY TO ENSURE MAINTENANCE OF THE UNDERGROUND GAS MAINS TO REMAIN IN SERVICE AS REQUIRED ON THE PLANS AND FOR THE GAS COMPANY'S REQUIREMENTS.	DEFERRANCE FROM THE POINT OF CONNECTION AS THE EXISTING GAS OR TO EXISTING SERVICE OF GAS WILL BE BY THE GAS COMPANY. JOINTLY RESPONSIBLE PARTIES WILL BE DETERMINED BY THE GAS COMPANY.
TELEPHONE SOUTH DAKOTA UTILITIES 714 WYCKE AVENUE RAPID CITY, SD 57701 CONTACT: JIM BARR PHONE: (605) 341-1884	COORDINATE CONSTRUCTION ACTIVITIES WITH TELEPHONE COMPANY TO ENSURE MAINTENANCE OF UNDERGROUND LINES AND CABLES PRIOR TO REMOVAL OR CLOSURE. PROVIDE AND INSTALL ALL NECESSARY GAS AND CABLES FROM THE POINT OF CONNECTION AS REQUIRED ON THE PLANS AND FOR THE TELEPHONE COMPANY'S REQUIREMENTS.	TELEPHONE COMPANY WILL PROVIDE AND INSTALL ALL TELEPHONE LINES FROM THE POINT OF CONNECTION TO THE BUILDING. JOINTLY RESPONSIBLE PARTIES WILL BE DETERMINED BY THE TELEPHONE COMPANY.
ELECTRIC BLACK HILLS POWER 1000 SHERIDAN AVENUE RAPID CITY, SD 57701 CONTACT: BOB BROWN PHONE: (605) 224-2222	COORDINATE CONSTRUCTION ACTIVITIES WITH ELECTRIC COMPANY TO ENSURE MAINTENANCE OF UNDERGROUND LINES AND CABLES PRIOR TO REMOVAL OR CLOSURE. PROVIDE AND INSTALL ALL NECESSARY GAS AND CABLES FROM THE POINT OF CONNECTION AS REQUIRED ON THE PLANS AND FOR THE ELECTRIC COMPANY'S REQUIREMENTS.	ELECTRIC COMPANY WILL PROVIDE AND INSTALL ALL ELECTRICAL LINES FROM THE POINT OF CONNECTION TO THE BUILDING. JOINTLY RESPONSIBLE PARTIES WILL BE DETERMINED BY THE ELECTRIC COMPANY.
SEWERAGE/SANITARY CITY OF RAPID CITY 300 SOUTH STREET RAPID CITY, SD 57701 CONTACT: JOHN WILSON PHONE: (605) 349-2123	PROTECT AND MAINTAIN EXISTING SEWER LINES PER THE PLANS AND AS REQUIRED APPROPRIATE FOR THE PLANS. ALL EXISTING SEWER LINES SHALL BE MAINTAINED AND PROTECTED THROUGHOUT CONSTRUCTION. PROVIDE AND INSTALL ALL NECESSARY SEWER LINES AND MANHOLES FROM THE POINT OF CONNECTION AS REQUIRED ON THE PLANS AND FOR THE CITY OF RAPID CITY'S REQUIREMENTS.	DEFERRANCE FROM THE POINT OF CONNECTION OF THE EXISTING SEWER LINE TO THE BUILDING SHALL BE BY THE CITY OF RAPID CITY. JOINTLY RESPONSIBLE PARTIES WILL BE DETERMINED BY THE CITY OF RAPID CITY.
WATER CITY OF RAPID CITY 300 SOUTH STREET RAPID CITY, SD 57701 CONTACT: JOHN WILSON PHONE: (605) 349-2123	PROTECT AND MAINTAIN EXISTING WATER MAINS PER THE PLANS AND AS REQUIRED APPROPRIATE FOR THE PLANS. ALL EXISTING WATER MAINS SHALL BE MAINTAINED AND PROTECTED THROUGHOUT CONSTRUCTION. PROVIDE AND INSTALL ALL NECESSARY WATER MAINS AND VALVES FROM THE POINT OF CONNECTION AS REQUIRED ON THE PLANS AND FOR THE CITY OF RAPID CITY'S REQUIREMENTS.	DEFERRANCE FROM THE POINT OF CONNECTION OF THE EXISTING WATER MAIN TO THE BUILDING SHALL BE BY THE CITY OF RAPID CITY. JOINTLY RESPONSIBLE PARTIES WILL BE DETERMINED BY THE CITY OF RAPID CITY.
STORM SEWER		

THIS MATRIX HAS BEEN PROVIDED FOR INFORMATIONAL PURPOSES. THE CONTRACTOR SHALL PROTECT AND MAINTAIN ALL UTILITIES, INCLUDING GAS, WATER, AND OTHER UTILITIES TO REMAIN OR EXISTING ON THE JOB SITE.



SHEET INDEX	
SHEET TITLE	SHEET NUMBER
COVER SHEET	1 OF 21
ALTA/ACSM SURVEY	2 OF 21
PHASE I EROSION AND SEDIMENT CONTROL PLAN	3 OF 21
PHASE II EROSION AND SEDIMENT CONTROL PLAN	4 OF 21
EROSION AND SEDIMENT CONTROL DETAIL SHT. 1	5 OF 21
EROSION AND SEDIMENT CONTROL DETAIL SHT. 2	6 OF 21
EROSION AND SEDIMENT CONTROL DETAIL SHT. 2	7 OF 21
EROSION AND SEDIMENT CONTROL DETAIL SHT. 4	8 OF 21
GRADING PLAN	9 OF 21
SITE PLAN	10 OF 21
UTILITY PLAN	11 OF 21
LANDSCAPING PLAN	12 OF 21
IRRIGATION PLAN	13 OF 21
SANITARY SEWER PLAN AND PROFILE	14 OF 21
STORM SEWER PLAN AND PROFILE SHT. 1	15 OF 21
STORM SEWER PLAN AND PROFILE SHT. 2	16 OF 21
STORM SEWER PLAN AND PROFILE SHT. 3	17 OF 21
DETAIL SHEET 1	18 OF 21
DETAIL SHEET 2	19 OF 21
DETAIL SHEET 3	20 OF 21
DETAIL SHEET 4	21 OF 21

BFA, INC.
103 ELM STREET
WASHINGTON, MISSOURI 63090
TEL: (636) 239-4751
FAX: (636) 239-1646
E-MAIL: mail@bfaeng.com

DEVELOPER
WAL-MART STORES, INC.,
2001 S.E. 10th STREET, SWDC
BENTONVILLE, ARKANSAS 72716-0550
(479) 273-4000 PHONE

ALERT TO CONTRACTOR:
 1. THE SITEWORK FOR THE WAL-MART PORTION OF THIS PROJECT SHALL MEET OR EXCEED THE "WAL-MART STANDARD SITEWORK SPECIFICATIONS."
 2. ALL NECESSARY INSPECTIONS AND/OR CERTIFICATIONS REQUIRED BY LOCAL AND/OR UTILITY SERVICE COMPANIES SHALL BE PERFORMED PRIOR TO ANNOUNCED BUILDING POSSESSION AND THE FINAL CONNECTION OF SERVICES.

EROSION AND SEDIMENTATION CONTROL PLAN / SITE MAP

SCALE: 1" = 60'

GENERAL EROSION AND SEDIMENTATION CONTROL NOTES

1. ALL STORM WATER POLLUTION PREVENTION PLAN IS CONSIDERED AS PART OF THE EROSION CONTROL PLAN. THE EROSION CONTROL PLAN SHALL BE SUBMITTED TO THE LOCAL GOVERNMENT FOR REVIEW AND APPROVAL.
2. ALL CONSTRUCTION AND MAINTENANCE ACTIVITIES SHALL BE CONDUCTED IN ACCORDANCE WITH THE EROSION CONTROL PLAN AND THE EROSION CONTROL PLAN SHALL BE MAINTAINED AND UPDATED AS NECESSARY.
3. ALL CONSTRUCTION SHALL BE CONDUCTED IN ACCORDANCE WITH THE EROSION CONTROL PLAN AND THE EROSION CONTROL PLAN SHALL BE MAINTAINED AND UPDATED AS NECESSARY.
4. ALL CONSTRUCTION SHALL BE CONDUCTED IN ACCORDANCE WITH THE EROSION CONTROL PLAN AND THE EROSION CONTROL PLAN SHALL BE MAINTAINED AND UPDATED AS NECESSARY.
5. ALL CONSTRUCTION SHALL BE CONDUCTED IN ACCORDANCE WITH THE EROSION CONTROL PLAN AND THE EROSION CONTROL PLAN SHALL BE MAINTAINED AND UPDATED AS NECESSARY.
6. ALL CONSTRUCTION SHALL BE CONDUCTED IN ACCORDANCE WITH THE EROSION CONTROL PLAN AND THE EROSION CONTROL PLAN SHALL BE MAINTAINED AND UPDATED AS NECESSARY.
7. ALL CONSTRUCTION SHALL BE CONDUCTED IN ACCORDANCE WITH THE EROSION CONTROL PLAN AND THE EROSION CONTROL PLAN SHALL BE MAINTAINED AND UPDATED AS NECESSARY.
8. ALL CONSTRUCTION SHALL BE CONDUCTED IN ACCORDANCE WITH THE EROSION CONTROL PLAN AND THE EROSION CONTROL PLAN SHALL BE MAINTAINED AND UPDATED AS NECESSARY.
9. ALL CONSTRUCTION SHALL BE CONDUCTED IN ACCORDANCE WITH THE EROSION CONTROL PLAN AND THE EROSION CONTROL PLAN SHALL BE MAINTAINED AND UPDATED AS NECESSARY.
10. ALL CONSTRUCTION SHALL BE CONDUCTED IN ACCORDANCE WITH THE EROSION CONTROL PLAN AND THE EROSION CONTROL PLAN SHALL BE MAINTAINED AND UPDATED AS NECESSARY.

BEST MANAGEMENT PRACTICES SCHEDULE

1. ALL EROSION AND SEDIMENTATION CONTROL MEASURES SHALL BE INSTALLED AND MAINTAINED THROUGHOUT THE CONSTRUCTION PERIOD.

2. ALL EROSION AND SEDIMENTATION CONTROL MEASURES SHALL BE INSTALLED AND MAINTAINED THROUGHOUT THE CONSTRUCTION PERIOD.

3. ALL EROSION AND SEDIMENTATION CONTROL MEASURES SHALL BE INSTALLED AND MAINTAINED THROUGHOUT THE CONSTRUCTION PERIOD.

LEGEND

SITE FEATURES

- PROPERTY LINE
- EXISTING ROAD
- PROPOSED LIMIT OF DISTURBANCE
- PROPOSED LIMIT OF CONSTRUCTION
- EXISTING ROAD
- PROPOSED OVERLAND FLOW
- UNITS OF SURFACE WATER
- 10' YEAR FLOOD PLAIN
- 50' YEAR FLOOD PLAIN
- 100' YEAR FLOOD PLAIN
- ROCK OUTCROP

EROSION DETAILS

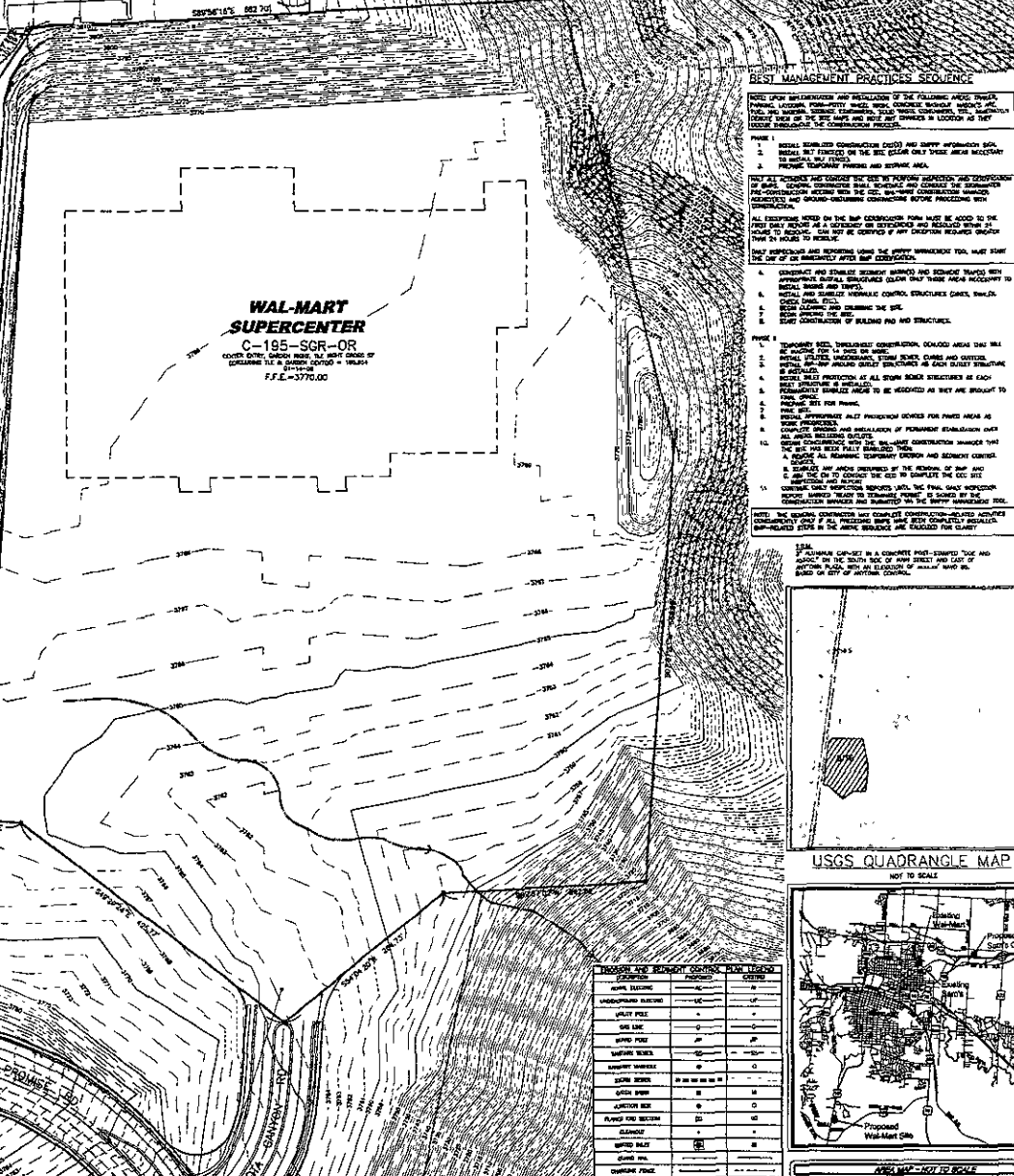
- TEMPORARY EROSION CONTROL
- PERMANENT EROSION CONTROL
- TEMPORARY EROSION CONTROL
- PERMANENT EROSION CONTROL
- TEMPORARY EROSION CONTROL
- PERMANENT EROSION CONTROL
- TEMPORARY EROSION CONTROL
- PERMANENT EROSION CONTROL
- TEMPORARY EROSION CONTROL
- PERMANENT EROSION CONTROL

EROSION NOTES

- 1. EROSION CONTROL MEASURES SHALL BE INSTALLED AND MAINTAINED THROUGHOUT THE CONSTRUCTION PERIOD.
- 2. EROSION CONTROL MEASURES SHALL BE INSTALLED AND MAINTAINED THROUGHOUT THE CONSTRUCTION PERIOD.
- 3. EROSION CONTROL MEASURES SHALL BE INSTALLED AND MAINTAINED THROUGHOUT THE CONSTRUCTION PERIOD.

SMP MAINTENANCE EROSION NOTES

- 1. ALL EROSION AND SEDIMENTATION CONTROL MEASURES SHALL BE MAINTAINED AND UPDATED AS NECESSARY.
- 2. ALL EROSION AND SEDIMENTATION CONTROL MEASURES SHALL BE MAINTAINED AND UPDATED AS NECESSARY.
- 3. ALL EROSION AND SEDIMENTATION CONTROL MEASURES SHALL BE MAINTAINED AND UPDATED AS NECESSARY.



WAL-MART SUPERCENTER
C-195-SGR-OR
COVER DATE: 04/09/09
DATE OF CONSTRUCTION: 11/11/09
F.F.E.-3770.00

1. TEMPORARY EROSION CONTROL MEASURES SHALL BE INSTALLED AND MAINTAINED THROUGHOUT THE CONSTRUCTION PERIOD.
2. PERMANENT EROSION CONTROL MEASURES SHALL BE INSTALLED AND MAINTAINED THROUGHOUT THE CONSTRUCTION PERIOD.
3. TEMPORARY EROSION CONTROL MEASURES SHALL BE INSTALLED AND MAINTAINED THROUGHOUT THE CONSTRUCTION PERIOD.
4. PERMANENT EROSION CONTROL MEASURES SHALL BE INSTALLED AND MAINTAINED THROUGHOUT THE CONSTRUCTION PERIOD.
5. TEMPORARY EROSION CONTROL MEASURES SHALL BE INSTALLED AND MAINTAINED THROUGHOUT THE CONSTRUCTION PERIOD.
6. PERMANENT EROSION CONTROL MEASURES SHALL BE INSTALLED AND MAINTAINED THROUGHOUT THE CONSTRUCTION PERIOD.
7. TEMPORARY EROSION CONTROL MEASURES SHALL BE INSTALLED AND MAINTAINED THROUGHOUT THE CONSTRUCTION PERIOD.
8. PERMANENT EROSION CONTROL MEASURES SHALL BE INSTALLED AND MAINTAINED THROUGHOUT THE CONSTRUCTION PERIOD.
9. TEMPORARY EROSION CONTROL MEASURES SHALL BE INSTALLED AND MAINTAINED THROUGHOUT THE CONSTRUCTION PERIOD.
10. PERMANENT EROSION CONTROL MEASURES SHALL BE INSTALLED AND MAINTAINED THROUGHOUT THE CONSTRUCTION PERIOD.

1. THE EROSION CONTROL PLAN SHALL BE MAINTAINED AND UPDATED AS NECESSARY.

2. THE EROSION CONTROL PLAN SHALL BE MAINTAINED AND UPDATED AS NECESSARY.

3. THE EROSION CONTROL PLAN SHALL BE MAINTAINED AND UPDATED AS NECESSARY.

1. THE EROSION CONTROL PLAN SHALL BE MAINTAINED AND UPDATED AS NECESSARY.

2. THE EROSION CONTROL PLAN SHALL BE MAINTAINED AND UPDATED AS NECESSARY.

3. THE EROSION CONTROL PLAN SHALL BE MAINTAINED AND UPDATED AS NECESSARY.

1. THE EROSION CONTROL PLAN SHALL BE MAINTAINED AND UPDATED AS NECESSARY.

2. THE EROSION CONTROL PLAN SHALL BE MAINTAINED AND UPDATED AS NECESSARY.

3. THE EROSION CONTROL PLAN SHALL BE MAINTAINED AND UPDATED AS NECESSARY.

1. THE EROSION CONTROL PLAN SHALL BE MAINTAINED AND UPDATED AS NECESSARY.

2. THE EROSION CONTROL PLAN SHALL BE MAINTAINED AND UPDATED AS NECESSARY.

3. THE EROSION CONTROL PLAN SHALL BE MAINTAINED AND UPDATED AS NECESSARY.

1. THE EROSION CONTROL PLAN SHALL BE MAINTAINED AND UPDATED AS NECESSARY.

2. THE EROSION CONTROL PLAN SHALL BE MAINTAINED AND UPDATED AS NECESSARY.

3. THE EROSION CONTROL PLAN SHALL BE MAINTAINED AND UPDATED AS NECESSARY.

1. THE EROSION CONTROL PLAN SHALL BE MAINTAINED AND UPDATED AS NECESSARY.

2. THE EROSION CONTROL PLAN SHALL BE MAINTAINED AND UPDATED AS NECESSARY.

3. THE EROSION CONTROL PLAN SHALL BE MAINTAINED AND UPDATED AS NECESSARY.

1. THE EROSION CONTROL PLAN SHALL BE MAINTAINED AND UPDATED AS NECESSARY.

2. THE EROSION CONTROL PLAN SHALL BE MAINTAINED AND UPDATED AS NECESSARY.

3. THE EROSION CONTROL PLAN SHALL BE MAINTAINED AND UPDATED AS NECESSARY.

1. THE EROSION CONTROL PLAN SHALL BE MAINTAINED AND UPDATED AS NECESSARY.

2. THE EROSION CONTROL PLAN SHALL BE MAINTAINED AND UPDATED AS NECESSARY.

3. THE EROSION CONTROL PLAN SHALL BE MAINTAINED AND UPDATED AS NECESSARY.

1. THE EROSION CONTROL PLAN SHALL BE MAINTAINED AND UPDATED AS NECESSARY.

2. THE EROSION CONTROL PLAN SHALL BE MAINTAINED AND UPDATED AS NECESSARY.

3. THE EROSION CONTROL PLAN SHALL BE MAINTAINED AND UPDATED AS NECESSARY.

1. THE EROSION CONTROL PLAN SHALL BE MAINTAINED AND UPDATED AS NECESSARY.

2. THE EROSION CONTROL PLAN SHALL BE MAINTAINED AND UPDATED AS NECESSARY.

3. THE EROSION CONTROL PLAN SHALL BE MAINTAINED AND UPDATED AS NECESSARY.

1. THE EROSION CONTROL PLAN SHALL BE MAINTAINED AND UPDATED AS NECESSARY.

2. THE EROSION CONTROL PLAN SHALL BE MAINTAINED AND UPDATED AS NECESSARY.

3. THE EROSION CONTROL PLAN SHALL BE MAINTAINED AND UPDATED AS NECESSARY.

ACREAGE SUMMARY (IN ACRES)

WAL-MART SITE AREA	0.00
ON-SITE DISTURBED AREA	5000.00
OFF-SITE DISTURBED AREA	5000.00
TOTAL DISTURBED AREA	10000.00
IMPERVIOUS AREA AT COMPLETION	5000.00
PERVIOUS/VEGETATED AREA AT COMPLETION	5000.00

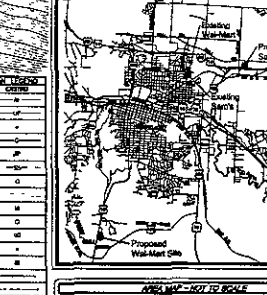
SOIL EROSION/SEDIMENTATION CONTROL TIME SCHEDULE

NOTE: GENERAL CONTRACTOR TO COMPLETE TABLE WITH THEIR SPECIFIC PROJECT SCHEDULE

CONSTRUCTION SEQUENCE	DATE	START	END	START	END	START	END	START	END
TEMPORARY CONSTRUCTION EROSION CONTROL MEASURES									
PERMANENT EROSION CONTROL MEASURES									
STORM FACILITIES									
CONSTRUCTION									
PERMANENT EROSION CONTROL MEASURES									
PERMANENT/VEGETATED CONSTRUCTION									
FISH PROTECTION									
LANDSCAPING/VEGETATION RESTORATION									

USGS QUADRANGLE MAP

NOT TO SCALE



1. THE EROSION CONTROL PLAN SHALL BE MAINTAINED AND UPDATED AS NECESSARY.

2. THE EROSION CONTROL PLAN SHALL BE MAINTAINED AND UPDATED AS NECESSARY.

3. THE EROSION CONTROL PLAN SHALL BE MAINTAINED AND UPDATED AS NECESSARY.

08PD007

WAL-MART SUPERCENTER

C-195-SGR-OR

COVER DATE: 04/09/09

DATE OF CONSTRUCTION: 11/11/09

F.F.E.-3770.00

PRELIMINARY DRAWING

FOR REVIEW PURPOSES ONLY

WAL-MART SUPERCENTER #3672-02

RAPID CITY, PENNINGTON COUNTY, SD

WAL-MART STORES, INC. 2001 SE 10TH ST.

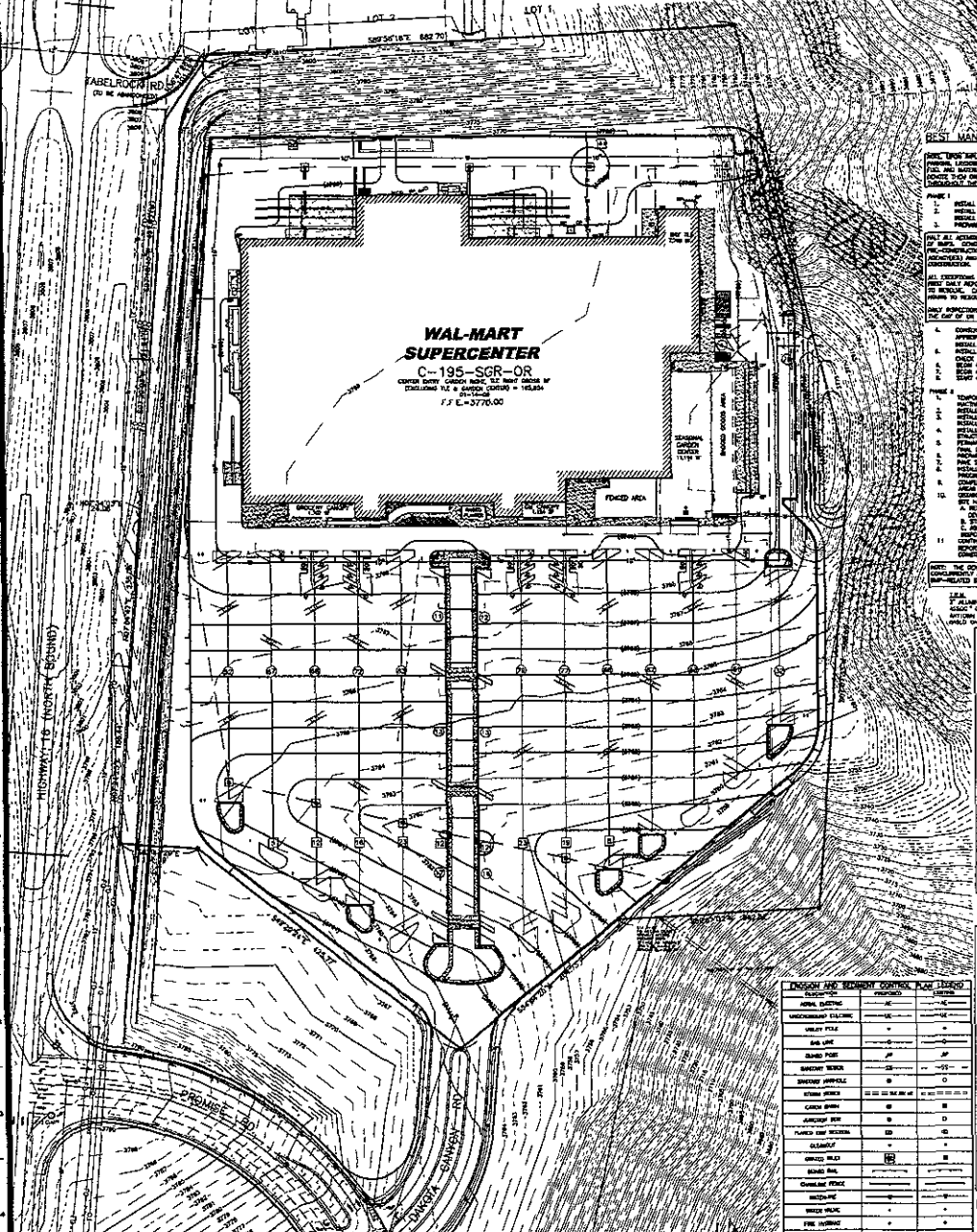
BENTONVILLE, AR 72716

DATE: 07/26/09

BY: [Signature]

SCALE: 1" = 60'

3 OF 21



WAL-MART SUPERCENTER
 C-195-SGR-OR
 7.3 E-3770.00

BEST MANAGEMENT PRACTICES SCHEDULE

THE BEST MANAGEMENT PRACTICES SCHEDULE OF THE EROSION CONTROL MEASURES SHALL BE COMPLETED IN ACCORDANCE WITH THE SCHEDULE AND THE CONSTRUCTION CONTRACTOR SHALL BE RESPONSIBLE FOR MONITORING THE PROGRESS OF THE SCHEDULE AND REPORTING TO THE OWNER.

NO.	DESCRIPTION	START DATE	END DATE	STATUS
1	INSTALL SLOPED EROSION CONTROL AND SLOPE PROTECTION SOIL	01/01/00	01/01/00	
2	INSTALL SLOPED EROSION CONTROL AND SLOPE PROTECTION SOIL	01/01/00	01/01/00	
3	INSTALL SLOPED EROSION CONTROL AND SLOPE PROTECTION SOIL	01/01/00	01/01/00	
4	INSTALL SLOPED EROSION CONTROL AND SLOPE PROTECTION SOIL	01/01/00	01/01/00	
5	INSTALL SLOPED EROSION CONTROL AND SLOPE PROTECTION SOIL	01/01/00	01/01/00	

LEGEND

SITE FEATURES

--- BOUNDARY LINE
 --- RIGHT OF WAY LINE
 --- PROPERTY LINE OF CONVEYANCE
 --- PROPOSED PERMANENT EROSION CONTROL MEASUREMENT
 --- PROPOSED TEMPORARY EROSION CONTROL MEASUREMENT
 --- EXISTING EROSION CONTROL MEASUREMENT
 --- EXISTING FENCE LINE
 --- PROPOSED FENCE LINE
 --- DIRECTION OF FLOWED FLOOD
 --- LIMITS OF FLOODPLAIN DESIGN
 --- OVERLOOK FENCE
 --- 60' MIN FLOOD PLAIN
 --- WATER BARRIER

EROSION DETAILS

(S) SLOPED EROSION CONTROL
 (S) SLOPED EROSION CONTROL
 (S) SLOPED EROSION CONTROL
 (S) SLOPED EROSION CONTROL
 (S) SLOPED EROSION CONTROL
 (S) SLOPED EROSION CONTROL
 (S) SLOPED EROSION CONTROL
 (S) SLOPED EROSION CONTROL
 (S) SLOPED EROSION CONTROL

EROSION NOTES

EROSION CONTROL MEASUREMENTS SHALL BE COMPLETED IN ACCORDANCE WITH THE SCHEDULE AND THE CONSTRUCTION CONTRACTOR SHALL BE RESPONSIBLE FOR MONITORING THE PROGRESS OF THE SCHEDULE AND REPORTING TO THE OWNER.

DEVELOPER/OWNER
 (SEE TO CONFORM OWNER)
 1001 SE 10TH STREET
 BENTONVILLE, AR 72715
 478-273-4000

SITE OPERATOR/GENERAL CONTRACTOR

SUPERINTENDENT

SEDIMENT CONTROL LEGEND

(S) SLOPED EROSION CONTROL
 (S) SLOPED EROSION CONTROL
 (S) SLOPED EROSION CONTROL
 (S) SLOPED EROSION CONTROL
 (S) SLOPED EROSION CONTROL
 (S) SLOPED EROSION CONTROL
 (S) SLOPED EROSION CONTROL
 (S) SLOPED EROSION CONTROL

ACREAGE SUMMARY (IN ACRES)

BL-MAINT SITE AREA	0.00
ON-SITE DEFINED AREA	0.0000
OFF-SITE DEFINED AREA	0.0000
TOTAL DEFINED AREA	0.0000
IMPERVIOUS AREA AT COMPLETION	0.0000
PERVIOUS/SEMI-IMP. AT COMPLETION	0.0000

SOIL EROSION/SEDIMENTATION CONTROL OPERATION TIME SCHEDULE

NOTE: GENERAL CONTRACTOR TO COMPLETE TABLE WITH THEIR SPECIFIC PROJECT SCHEDULE.

CONSTRUCTION SCHEDULE	CONSTRUCTION SCHEDULE	CONSTRUCTION SCHEDULE	CONSTRUCTION SCHEDULE	CONSTRUCTION SCHEDULE	CONSTRUCTION SCHEDULE	CONSTRUCTION SCHEDULE	CONSTRUCTION SCHEDULE	CONSTRUCTION SCHEDULE	CONSTRUCTION SCHEDULE	CONSTRUCTION SCHEDULE	CONSTRUCTION SCHEDULE

OFF-SITE MATERIAL AREA(S) INFORMATION

SOILWORK SITE NAME:		OFFICE SITE NAME:	
SOILWORK SITE ADDRESS:		OFFICE SITE ADDRESS:	
SOILWORK SITE POINT HOLDER:		OFFICE SITE POINT HOLDER:	
SOILWORK SITE PERMIT No.:		OFFICE SITE PERMIT No.:	
SOILWORK SITE FLOODING AGENCY:		OFFICE SITE FLOODING AGENCY:	
SOILWORK SITE CONTACT INFORMATION IS ACCORD TO SCS PLAN AND SPAN MATERIALS ONLY		OFFICE SITE CONTACT INFORMATION IS ACCORD TO SCS PLAN AND SPAN MATERIALS ONLY	

USGS QUADRANGLE MAP
 NOT TO SCALE

EROSION AND SEDIMENTATION CONTROL PLAN LEGEND

SYMBOL	DESCRIPTION
(S)	SLOPED EROSION CONTROL
(S)	SLOPED EROSION CONTROL
(S)	SLOPED EROSION CONTROL
(S)	SLOPED EROSION CONTROL
(S)	SLOPED EROSION CONTROL
(S)	SLOPED EROSION CONTROL
(S)	SLOPED EROSION CONTROL
(S)	SLOPED EROSION CONTROL
(S)	SLOPED EROSION CONTROL

GENERAL EROSION AND SEDIMENT CONTROL NOTES

- THE GENERAL EROSION AND SEDIMENTATION CONTROL PLAN IS A COMPONENT OF THE CONSTRUCTION PLAN AND IS SUBJECT TO THE EROSION AND SEDIMENTATION CONTROL ACT AND THE EROSION AND SEDIMENTATION CONTROL REGULATIONS.
- CONSTRUCTION AND MAINTENANCE OPERATIONS SHALL BE CONDUCTED IN ACCORDANCE WITH THE EROSION AND SEDIMENTATION CONTROL PLAN AND THE EROSION AND SEDIMENTATION CONTROL REGULATIONS.
- CONSTRUCTION SHALL IMPLEMENT BEST MANAGEMENT PRACTICES AS REQUIRED BY THE EROSION AND SEDIMENTATION CONTROL ACT AND THE EROSION AND SEDIMENTATION CONTROL REGULATIONS.
- CONSTRUCTION OPERATIONS SHALL BE CONDUCTED IN ACCORDANCE WITH THE EROSION AND SEDIMENTATION CONTROL PLAN AND THE EROSION AND SEDIMENTATION CONTROL REGULATIONS.
- CONSTRUCTION SHALL IMPLEMENT BEST MANAGEMENT PRACTICES AS REQUIRED BY THE EROSION AND SEDIMENTATION CONTROL ACT AND THE EROSION AND SEDIMENTATION CONTROL REGULATIONS.
- CONSTRUCTION OPERATIONS SHALL BE CONDUCTED IN ACCORDANCE WITH THE EROSION AND SEDIMENTATION CONTROL PLAN AND THE EROSION AND SEDIMENTATION CONTROL REGULATIONS.
- CONSTRUCTION SHALL IMPLEMENT BEST MANAGEMENT PRACTICES AS REQUIRED BY THE EROSION AND SEDIMENTATION CONTROL ACT AND THE EROSION AND SEDIMENTATION CONTROL REGULATIONS.
- CONSTRUCTION OPERATIONS SHALL BE CONDUCTED IN ACCORDANCE WITH THE EROSION AND SEDIMENTATION CONTROL PLAN AND THE EROSION AND SEDIMENTATION CONTROL REGULATIONS.
- CONSTRUCTION SHALL IMPLEMENT BEST MANAGEMENT PRACTICES AS REQUIRED BY THE EROSION AND SEDIMENTATION CONTROL ACT AND THE EROSION AND SEDIMENTATION CONTROL REGULATIONS.
- CONSTRUCTION OPERATIONS SHALL BE CONDUCTED IN ACCORDANCE WITH THE EROSION AND SEDIMENTATION CONTROL PLAN AND THE EROSION AND SEDIMENTATION CONTROL REGULATIONS.

BMP MAINTENANCE/EROSION NOTES.

ALL MEASURES SHOWN ON THIS SITE MAP AND IN THE EROSION AND SEDIMENTATION CONTROL PLAN SHALL BE MAINTAINED IN ACCORDANCE WITH THE EROSION AND SEDIMENTATION CONTROL ACT AND THE EROSION AND SEDIMENTATION CONTROL REGULATIONS.

1. BEST PRACTICES SHALL BE MAINTAINED OR REPLACED IF THEY SHOW SIGNS OF WEAR/TEAR OR OBSTRUCTION.

2. BEST PRACTICES SHALL BE MAINTAINED OR REPLACED IF THEY SHOW SIGNS OF WEAR/TEAR OR OBSTRUCTION.

3. BEST PRACTICES SHALL BE MAINTAINED OR REPLACED IF THEY SHOW SIGNS OF WEAR/TEAR OR OBSTRUCTION.

4. BEST PRACTICES SHALL BE MAINTAINED OR REPLACED IF THEY SHOW SIGNS OF WEAR/TEAR OR OBSTRUCTION.

PRELIMINARY DRAWING
 FOR REVIEW PURPOSES ONLY
 NOT TO BE USED FOR CONSTRUCTION

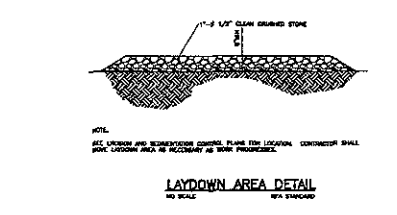
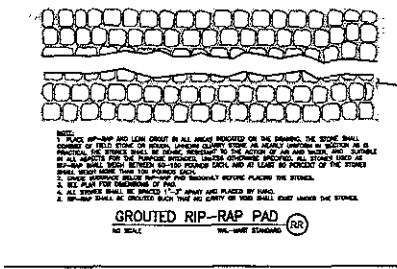
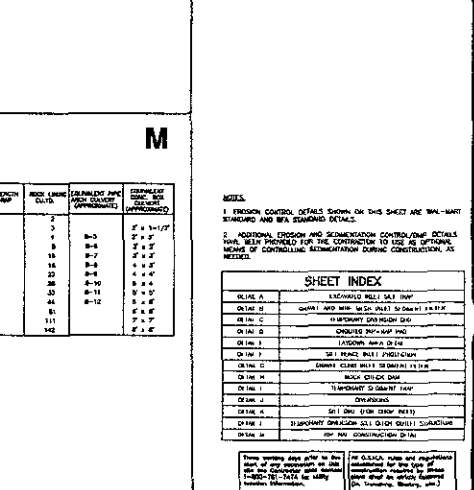
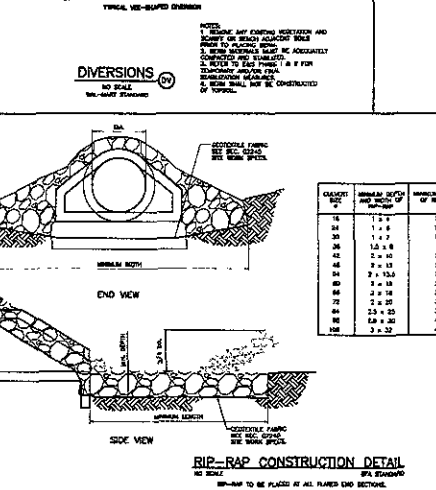
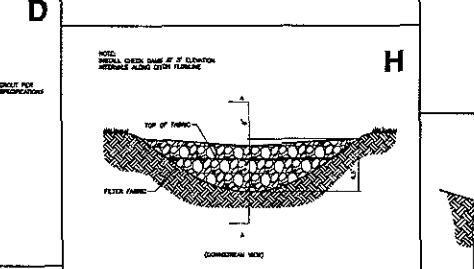
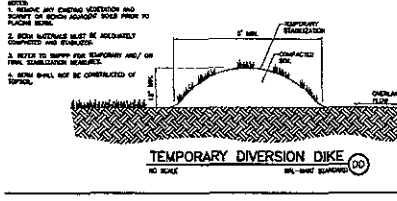
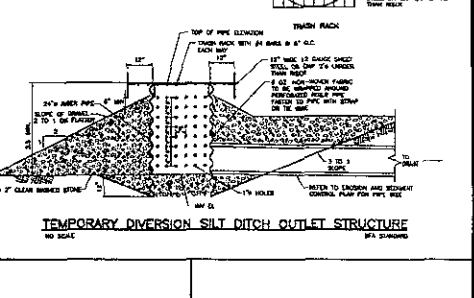
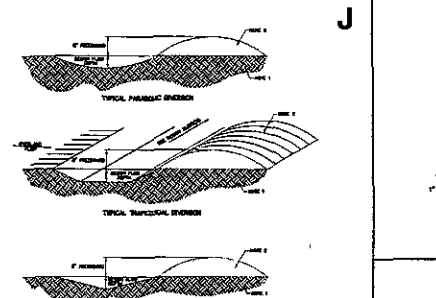
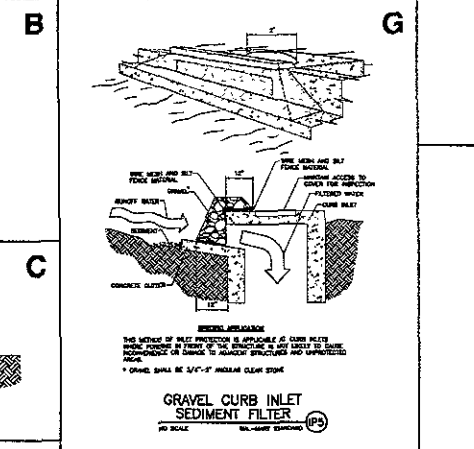
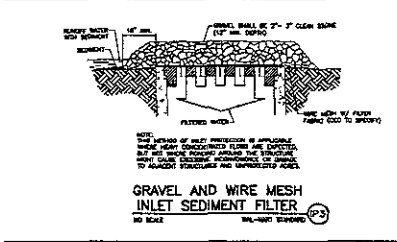
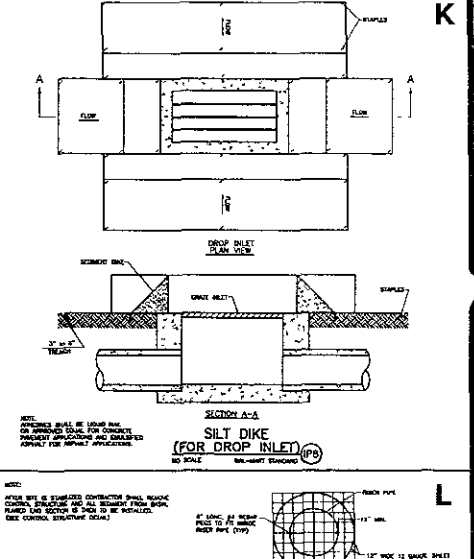
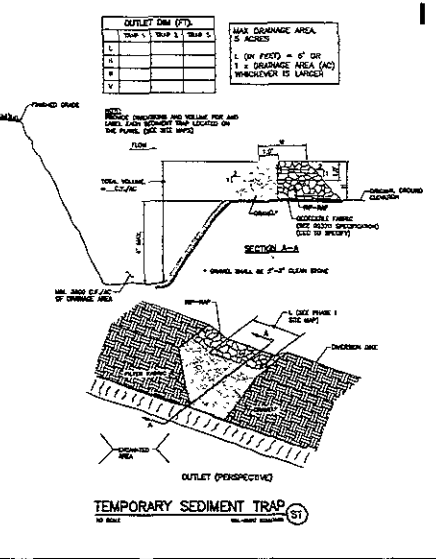
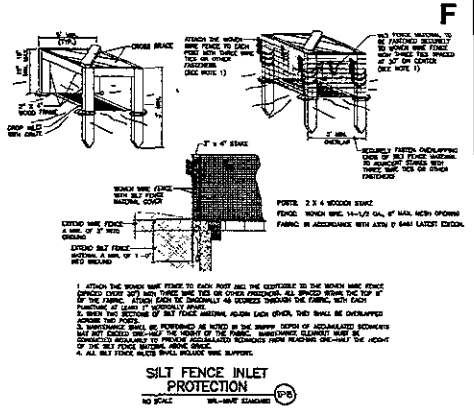
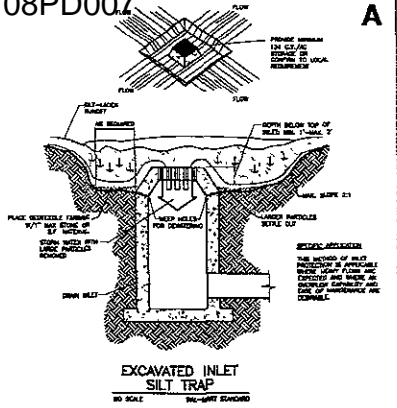
WAL-MART SUPERCENTER #3872-02
RAPID CITY, PENNINGTON COUNTY, SD
WAL-MART STORES, INC. 2001 SE 10TH ST.
BENTONVILLE, AR 72716

GROUP: []
 CHECKED: []
 DATE: []
 07/04/00
 1:00 P.M.
 08-2000
 4537 P.M.
 08-2000
 4537 P.M.

BFA
 BENTONVILLE, AR 72716
 BENTONVILLE, AR 72716

PHASE II

EROSION AND SEDIMENTATION CONTROL PLAN / SITE MAP



REVISIONS	
1	DATE
2	DESCRIPTION
3	DATE
4	DESCRIPTION
5	DATE
6	DESCRIPTION

BFA
CONSULTING ENGINEERS
1000 W. UNIVERSITY BLVD.
BENTONVILLE, AR 72716
TEL: 479-273-1111
FAX: 479-273-1112

PRELIMINARY DRAWING
FOR REVIEW PURPOSES ONLY
NOT TO BE USED FOR CONSTRUCTION

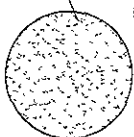
WAL-MART SUPERCENTER #3872-02
RAPID CITY, PENNINGTON COUNTY, SD
WAL-MART STORES, INC. 2001 SE 10TH ST.
BENTONVILLE, AR 72716

DESIGN BY: [Name]
CHECKED BY: [Name]
SCALE: [Scale]
DATE: [Date]
JOB NO.: [Job No.]
DWG NO.: [Dwg No.]
CHECK NAME: [Name]
SCALE: [Scale]
DATE: [Date]

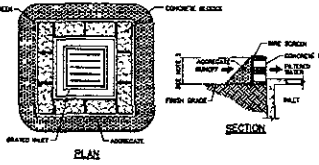
- CONTINUOUS OF SIMILAR CONSTRUCTION MUST BE USED THAT WILL ASSURE THAT NO SOILS OR LOGS ESCAPE THE CONSTRUCTION DURING THE CONSTRUCTION PERIOD.
- THE CONCRETE SHALL BE REINFORCED AND REINFORCEMENT SHALL BE PLACED AND LOCATED AS SHOWN. WEIGHT EXCEEDS THE DOT REGULATIONS.

DO NOT ROLL OFF EXPOSURE LINED WITH AN APPROPRIATE FABRIC COVERING ENOUGH TO ASSURE NO LEAKAGE, SEE NOTES

SAW MUST BE AT THE END OF EACH DAY. SAW CUTS SHALL BE ADDED TO THE CONCRETE IN SUFFICIENT AMOUNTS TO ABSORB ALL LOGS.

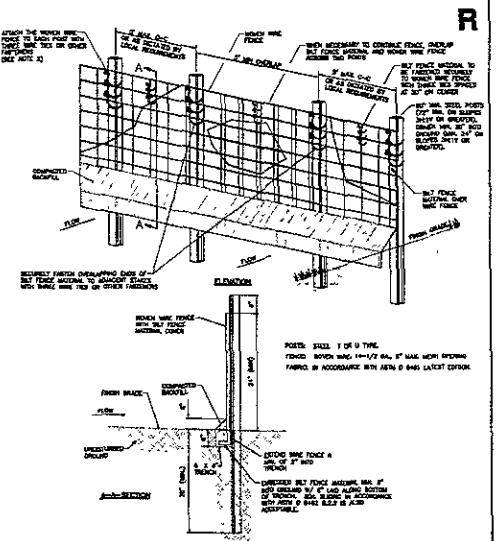


CONCRETE WASHOUT DETAIL

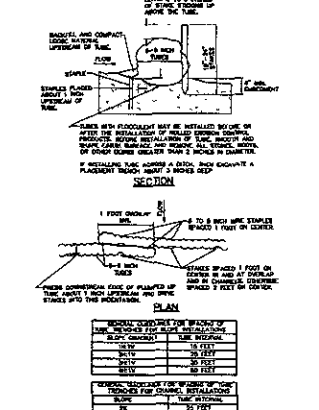


- PLACE CONCRETE BLOCKS IN A SINGLE ROW AROUND PERIMETER OF INLET ON EACH SIDE WITH OVERLAP OF MINIMUM 2" BETWEEN BLOCKS.
- HEIGHT OF BARRIER WALLS USE RANGE OF 4" TO 12" IN BLOCKS. THE HEIGHT OF BARRIER SHALL BE 12" AND WALL HEIGHT SHALL BE 24".
- PLACE WASHOUT CLOTH/MESH OVER EACH SIDE OF BARRIER WITH OVERLAP OF MINIMUM 2" BETWEEN CLOTHS.
- THE AGGREGATE SHALL BE 1/2" TO 3/4" CLEAN GRANULAR STONE. WATER WILL RUN IN THE CENTER OF THE WATER AND FILTER THROUGH AND OVER THE WASHOUT CLOTH CONTAINING THE MUD.

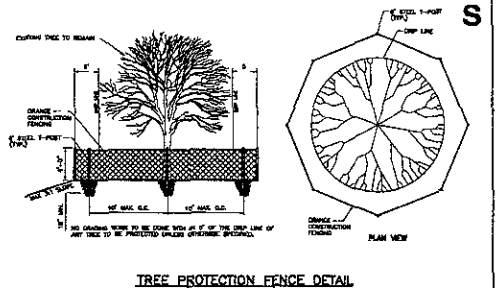
BLOCK AND AGGREGATE INLET SEDIMENT DEVICE



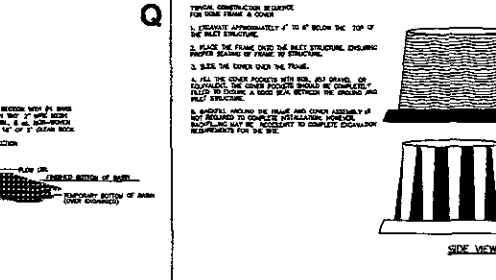
TEMPORARY SILT CONTROL STRUCTURE



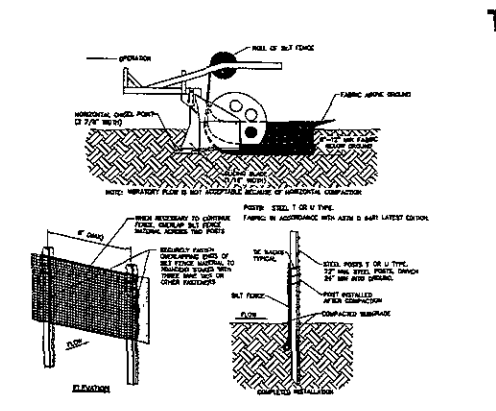
TREE PROTECTION FENCE DETAIL



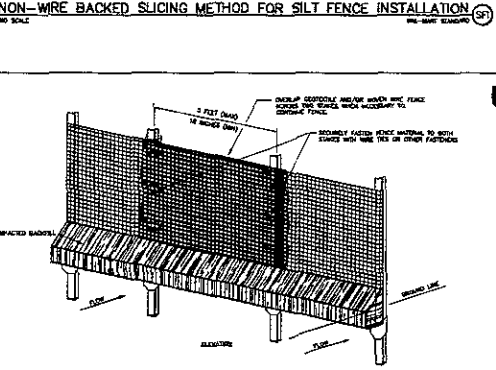
FIBER FLOCCULENT TUBE



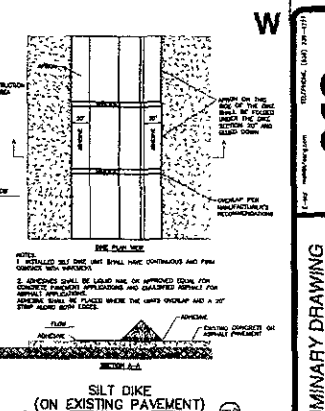
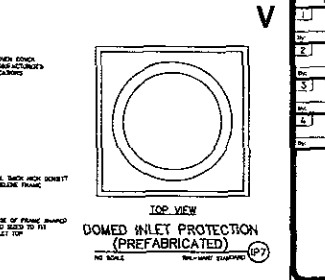
DOMED INLET PROTECTION (PREFABRICATED)



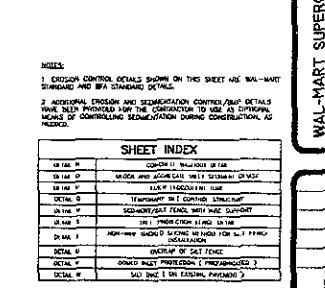
SPECIFICATIONS FOR STATIC SLICING METHOD FOR SILT FENCE INSTALLATION



OVERLAP OF SILT FENCE



SILT DIKE (ON EXISTING PAVEMENT)



SEDIMENTATION/SILT FENCE WITH WIRE SUPPORT

NON-WIRE BACKED SLICING METHOD FOR SILT FENCE INSTALLATION

SHEET INDEX

NO.	DESCRIPTION	DATE
1	DESIGN CONTROL DETAILS SHOWN ON THIS SHEET ARE UNLAWYERED AND BFA STANDARD DETAILS.	
2	ADDITIONAL PROVISION AND SEDIMENTATION CONTROL/PAV DETAILS SHALL BE PROVIDED BY THE CONTRACTOR TO USE AS DIFFERENTIAL MEANS OF CONTROLLING SEDIMENTATION DURING CONSTRUCTION AS NEEDED.	

BFA
CONSTRUCTION ENGINEERS ARCHITECTS

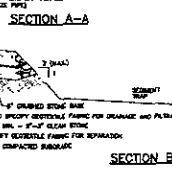
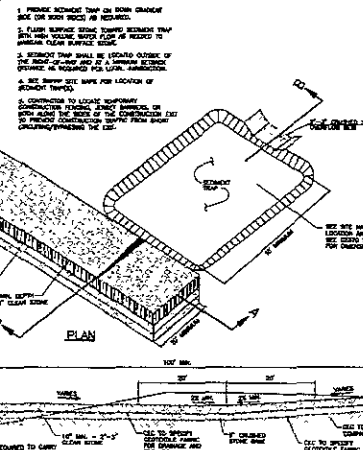
PRELIMINARY DRAWING

FOR REVIEW PURPOSES ONLY
NOT TO BE USED FOR CONSTRUCTION

WAL-MART SUPERCENTER #3872-02
RAPID CITY, PENNINGTON COUNTY, SD
WAL-MART STORES, INC. 2001 SE 10TH ST.
BENTONVILLE, AR 72716

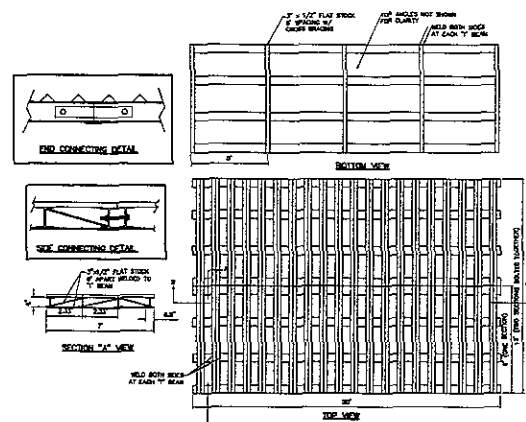
Drawn: []
Checked: []
Date: []
Scale: []
Job No: []
Sheet No: []
Project Name: []
Design and Section Control: []

6 OF 21



CONSTRUCTION EXIT
NO SCALE
WAL-LIVE EXHIBIT 22

1. PROVIDE REINFORCE TIE ON BOTH GRADE AND BASE FOR BOTH WEDGES AS REQUIRED.
2. CURB REMOVE DRAIN TROUGH BEHIND TYP WITH HIGH VOLUME SEALS FOR AS NEEDED TO PREVENT CLEAN SURFACE SEALS.
3. STRUCTURE SHALL BE LOCATED OUTSIDE OF THE FRONT OF CURB. CURB SHALL BE LOCATED OUTSIDE OF THE FRONT OF CURB. CURB SHALL BE LOCATED OUTSIDE OF THE FRONT OF CURB.
4. SEE SWPPP DETAIL MAPS FOR LOCATION OF REMOVED TRENCH.
5. CONTRACTOR TO LOCATE SPOORING CONNECTIONS TO CURB. CONTRACTOR TO LOCATE SPOORING CONNECTIONS TO CURB.
6. CONTRACTOR TO LOCATE SPOORING CONNECTIONS TO CURB. CONTRACTOR TO LOCATE SPOORING CONNECTIONS TO CURB.



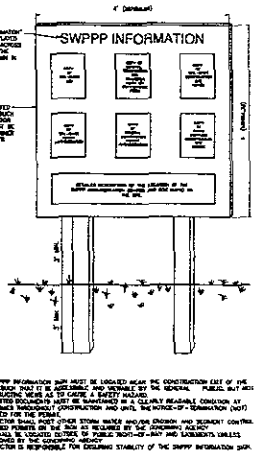
7" X 10" BEAM

DESIGN PER	AS PER
DESIGN PER	AS PER
TOTAL LENGTH	10'
TOTAL WIDTH	7'
BEAM SPACING	7" ON CENTER
BEAM TYPE	7" X 10" STEEL

1/2" X 3/8" PLAT STOCK

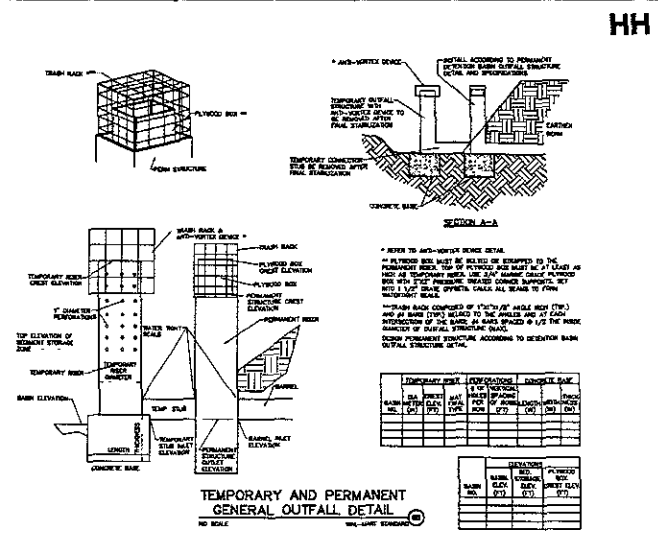
DESIGN PER	AS PER
DESIGN PER	AS PER
TOTAL LENGTH	10'
TOTAL WIDTH	7'
BEAM SPACING	7" ON CENTER
BEAM TYPE	7" X 10" STEEL

TRUCK WHEEL CLEANING GRATE
NO SCALE
89 STANDARD

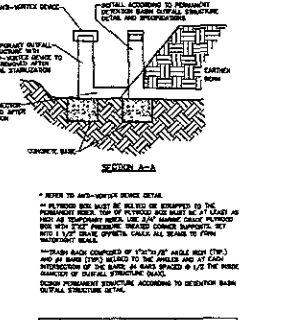


SWPPP INFORMATION SIGN
NO SCALE
89 SWPPP EXHIBIT 08

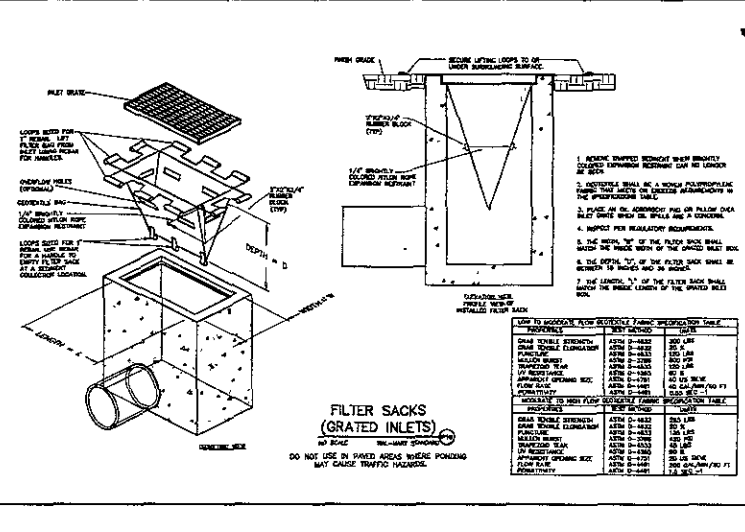
- NOTES:
1. SWPPP INFORMATION SIGN SHALL BE LOCATED NEAR THE CONSTRUCTION SITE OF THE PROJECT.
 2. SWPPP INFORMATION SIGN SHALL BE CONSTRUCTED AS SHOWN IN THE DETAIL.
 3. ALL PORTED SIGNAGE MUST BE CONSTRUCTED IN A CLEARLY VISIBLE LOCATION AT EACH CONSTRUCTION SITE AND MAINTAINED THROUGHOUT CONSTRUCTION.
 4. ALL PORTED SIGNAGE MUST BE CONSTRUCTED IN A CLEARLY VISIBLE LOCATION AT EACH CONSTRUCTION SITE AND MAINTAINED THROUGHOUT CONSTRUCTION.
 5. SWPPP INFORMATION SIGN SHALL BE CONSTRUCTED AS SHOWN IN THE DETAIL.
 6. SWPPP INFORMATION SIGN SHALL BE CONSTRUCTED AS SHOWN IN THE DETAIL.



TEMPORARY AND PERMANENT GENERAL OUTFALL DETAIL
NO SCALE
WAL-LIVE EXHIBIT 23



DESCRIPTION	QUANTITY	UNIT
CONCRETE BASE	1.00	CY
TEMP. CURB	1.00	LN
PERM. CURB	1.00	LN
TEMP. WALL	1.00	LN
PERM. WALL	1.00	LN
TEMP. BACK	1.00	LN
PERM. BACK	1.00	LN
TEMP. GRATE	1.00	LN
PERM. GRATE	1.00	LN
TEMP. SIGN	1.00	LN
PERM. SIGN	1.00	LN
TEMP. STRUCTURE	1.00	LN
PERM. STRUCTURE	1.00	LN
TEMP. BACK	1.00	LN
PERM. BACK	1.00	LN
TEMP. GRATE	1.00	LN
PERM. GRATE	1.00	LN
TEMP. SIGN	1.00	LN
PERM. SIGN	1.00	LN
TEMP. STRUCTURE	1.00	LN
PERM. STRUCTURE	1.00	LN



FILTER SACKS (GRADED INLETS)
NO SCALE
WAL-LIVE EXHIBIT 24

1. 4" BORE DIAMETER (4" DIA.) FILTER SACKS SHALL BE USED IN ALL CONCRETE GRATED INLETS.
2. 4" BORE DIAMETER (4" DIA.) FILTER SACKS SHALL BE USED IN ALL CONCRETE GRATED INLETS.
3. 4" BORE DIAMETER (4" DIA.) FILTER SACKS SHALL BE USED IN ALL CONCRETE GRATED INLETS.
4. 4" BORE DIAMETER (4" DIA.) FILTER SACKS SHALL BE USED IN ALL CONCRETE GRATED INLETS.
5. 4" BORE DIAMETER (4" DIA.) FILTER SACKS SHALL BE USED IN ALL CONCRETE GRATED INLETS.
6. 4" BORE DIAMETER (4" DIA.) FILTER SACKS SHALL BE USED IN ALL CONCRETE GRATED INLETS.
7. 4" BORE DIAMETER (4" DIA.) FILTER SACKS SHALL BE USED IN ALL CONCRETE GRATED INLETS.
8. 4" BORE DIAMETER (4" DIA.) FILTER SACKS SHALL BE USED IN ALL CONCRETE GRATED INLETS.
9. 4" BORE DIAMETER (4" DIA.) FILTER SACKS SHALL BE USED IN ALL CONCRETE GRATED INLETS.
10. 4" BORE DIAMETER (4" DIA.) FILTER SACKS SHALL BE USED IN ALL CONCRETE GRATED INLETS.

NOTES:

1. CONSTRUCTION CONTROL DETAILS SHOWN ON THIS SHEET ARE WAL-LIVE STANDARD AND WITH STANDING OLYMPS.
2. CONSTRUCTION CONTROL AND DEMONSTRATION CONTROL/DMP DETAILS HAVE BEEN PROVIDED FOR THE CONTRACTOR TO USE AS ORIGINAL BASIS OF CONSTRUCTION DEMONSTRATION DURING CONSTRUCTION, AS NECESSARY.

DATE	BY	REVISION
08/01/20		
08/01/20		
08/01/20		
08/01/20		
08/01/20		
08/01/20		

Sheet Index: 08 PD 007, Construction 1 of 1, Revision 1, Date 08/01/20, Author: [Name], Checker: [Name], Title: [Title], Project: [Project Name], Location: [Location], Scale: [Scale], Drawing Number: 08-2686, Drawing Title: TRUCK WHEEL CLEANING GRATE, Sheet Name: TRUCK WHEEL CLEANING GRATE, Revision Control: [Details]

BFA
CONSTRUCTION SERVICES
10000 N. STATE ST. SUITE 100
DENTON, TX 76205
(817) 281-8888
www.bfa.com

WAL-MART SUPERCENTER #3872-02
RAPID CITY, PENNINGTON COUNTY, SD
WAL-MART STORES, INC. 2001 SE 10TH ST.
BENTONVILLE, AR 72716

BENTONVILLE, AR 72716

Sheet Index: 08 PD 007, Construction 1 of 1, Revision 1, Date 08/01/20, Author: [Name], Checker: [Name], Title: [Title], Project: [Project Name], Location: [Location], Scale: [Scale], Drawing Number: 08-2686, Drawing Title: TRUCK WHEEL CLEANING GRATE, Sheet Name: TRUCK WHEEL CLEANING GRATE, Revision Control: [Details]