

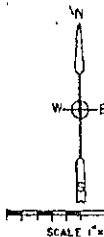
PLAT OF  
 LOTS A THROUGH D  
 — AMELIA SUBDIVISION —

08UR009

(FORMERLY LOTS I THROUGH 9, THE  
 ELMS, TRACT E, AND LOT 7, BLOCK I,  
 SUNNYVALE)

ALL IN  
 S.W. 1/4 OF S.E. 1/4, SECTION 4, T.1N.,  
 R.7E, B.H.M., RAPID CITY, PENNINGTON  
 COUNTY, SOUTH DAKOTA

*See Misc Books 22 page 2587  
 for Redefinition and Grades*

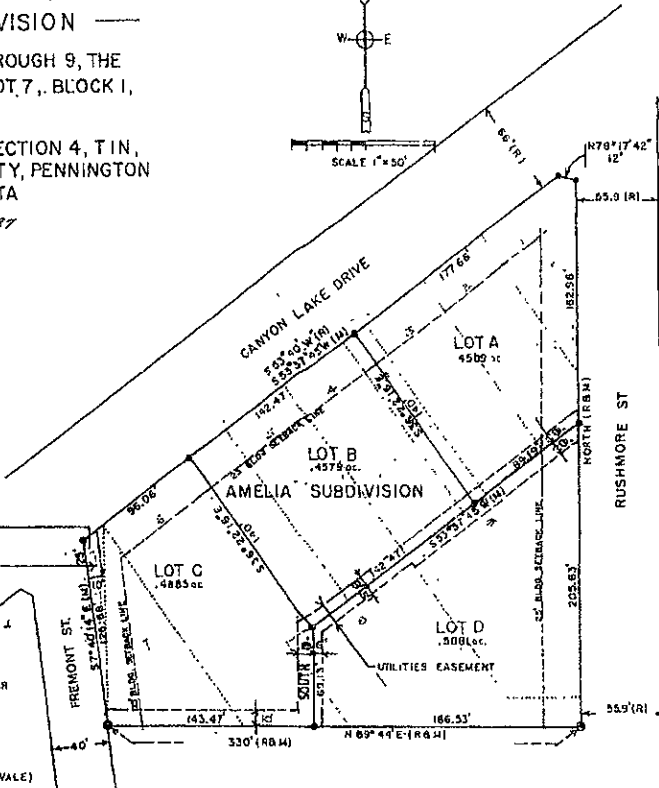


EASEMENT FOR RELOCATION AND  
 SERVICE TO FIRE HYDRANT

(FORMER LOT 7, B.L.K. I, SUNNYVALE)

- ⊙ FOUND CORNER
- SET CORNER - 5/8" ST. BAR
- PREVIOUS LOT LINES
- (R) RECORDED
- (M) MEASURED
- EASEMENT LINE

(SUNNYVALE)



SURVEYOR'S CERTIFICATE

I, JERIC D. GIGAR, REGISTERED LAND SURVEYOR # 1007 OF THE STATE OF SOUTH DAKOTA, DO HEREBY CERTIFY THAT BEING SO AUTHORIZED, I HAVE THE SURVEY AND PLAT OF THE LAND BOUND AND DESCRIBED HEREON. ALL AREA AMOUNTS SHALL BE FOLLOWED WITH THE WORDS "MORE OR LESS", AND THE PLAT IS IN ALL RESPECTS TRUE AND CORRECT.

*Jeric D. Gigar*  
 REGISTERED LAND SURVEYOR #1007  
 February 26, 1982.

CERTIFICATE OF DIRECTOR OF EQUALIZATION

I, Director of Equalization for Pennington County, do hereby certify that I have a copy of the within described plat in my office.

DIRECTOR OF EQUALIZATION: *Rebecca Lamb*  
 DATE: 4-18-82

APPROVED: *Rebecca Lamb*