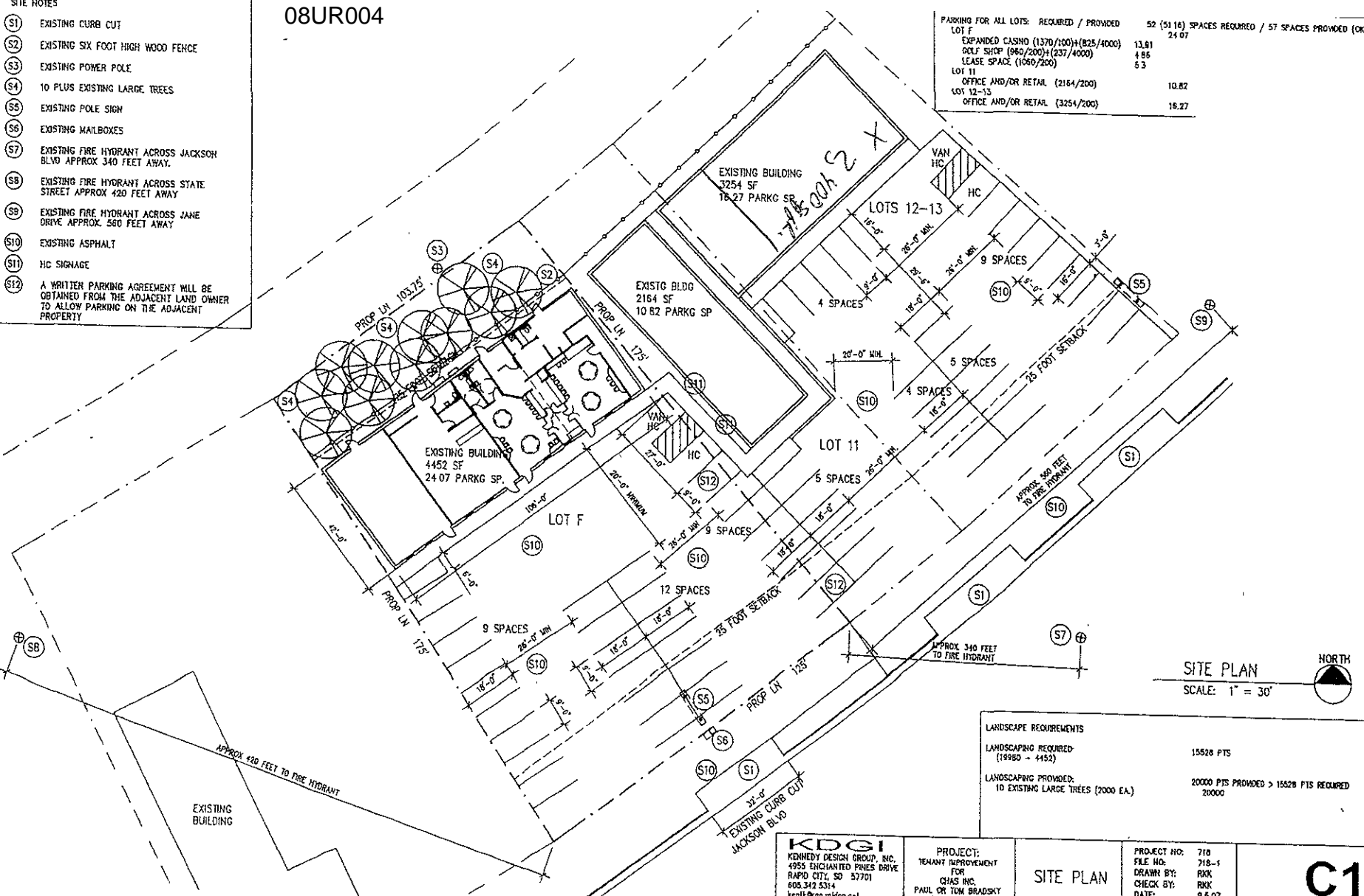


08UR004

- SITE NOTES**
- (S1) EXISTING CURB CUT
 - (S2) EXISTING SIX FOOT HIGH WOOD FENCE
 - (S3) EXISTING POWER POLE
 - (S4) 10 PLUS EXISTING LARGE TREES
 - (S5) EXISTING POLE SIGN
 - (S6) EXISTING MAILBOXES
 - (S7) EXISTING FIRE HYDRANT ACROSS JACKSON BLVD APPROX 340 FEET AWAY.
 - (S8) EXISTING FIRE HYDRANT ACROSS STATE STREET APPROX 420 FEET AWAY
 - (S9) EXISTING FIRE HYDRANT ACROSS JANE DRIVE APPROX. 560 FEET AWAY
 - (S10) EXISTING ASPHALT
 - (S11) HC SIGNAGE
 - (S12) A WRITTEN PARKING AGREEMENT WILL BE OBTAINED FROM THE ADJACENT LAND OWNER TO ALLOW PARKING ON THE ADJACENT PROPERTY

| PARKING FOR ALL LOTS: REQUIRED / PROVIDED | | 52 (S116) SPACES REQUIRED / 57 SPACES PROVIDED (OK) |
|-------------------------------------------|---------------------------------------|-----------------------------------------------------|
| LOT F | EXPANDED CASINO (1370/100)+(825/4000) | 13.81 |
| | ONLY SIGN (1640/200)+(237/4000) | 4.86 |
| | LEASE SPACE (1069/200) | 5.3 |
| LOT 11 | OFFICE AND/OR RETAIL (2164/200) | 10.82 |
| LOT 12-13 | OFFICE AND/OR RETAIL (3254/200) | 16.27 |



SITE PLAN
SCALE: 1" = 30'

| LANDSCAPE REQUIREMENTS | |
|----------------------------------------------------------|-----------------------------------------------|
| LANDSCAPING REQUIRED: (19980 - 4452) | 15528 PTS |
| LANDSCAPING PROVIDED: 10 EXISTING LARGE TREES (2000 EA.) | 20000 PTS PROVIDED > 15528 PTS REQUIRED 20000 |

| | | |
|---------------------------------------------------------------------------------------------------------------------------------------|----------------------------------------------------------------------------------------|----------------------------------------------------------------------------------------------------|
| KDGI KENNEDY DESIGN GROUP, INC. 4955 ENCHANTED PINES DRIVE RAPID CITY, SD 57701 605.342.5314 kent@kdg.midea.net | PROJECT: TENANT IMPROVEMENT FOR CHAS INC. PAUL OR TOM BRADSKY 1 215 742 | PROJECT NO: 710 FILE NO: 718-1 DRAWN BY: RKK CHECK BY: RKK DATE: 9.5.07 |
| | SITE PLAN | |