

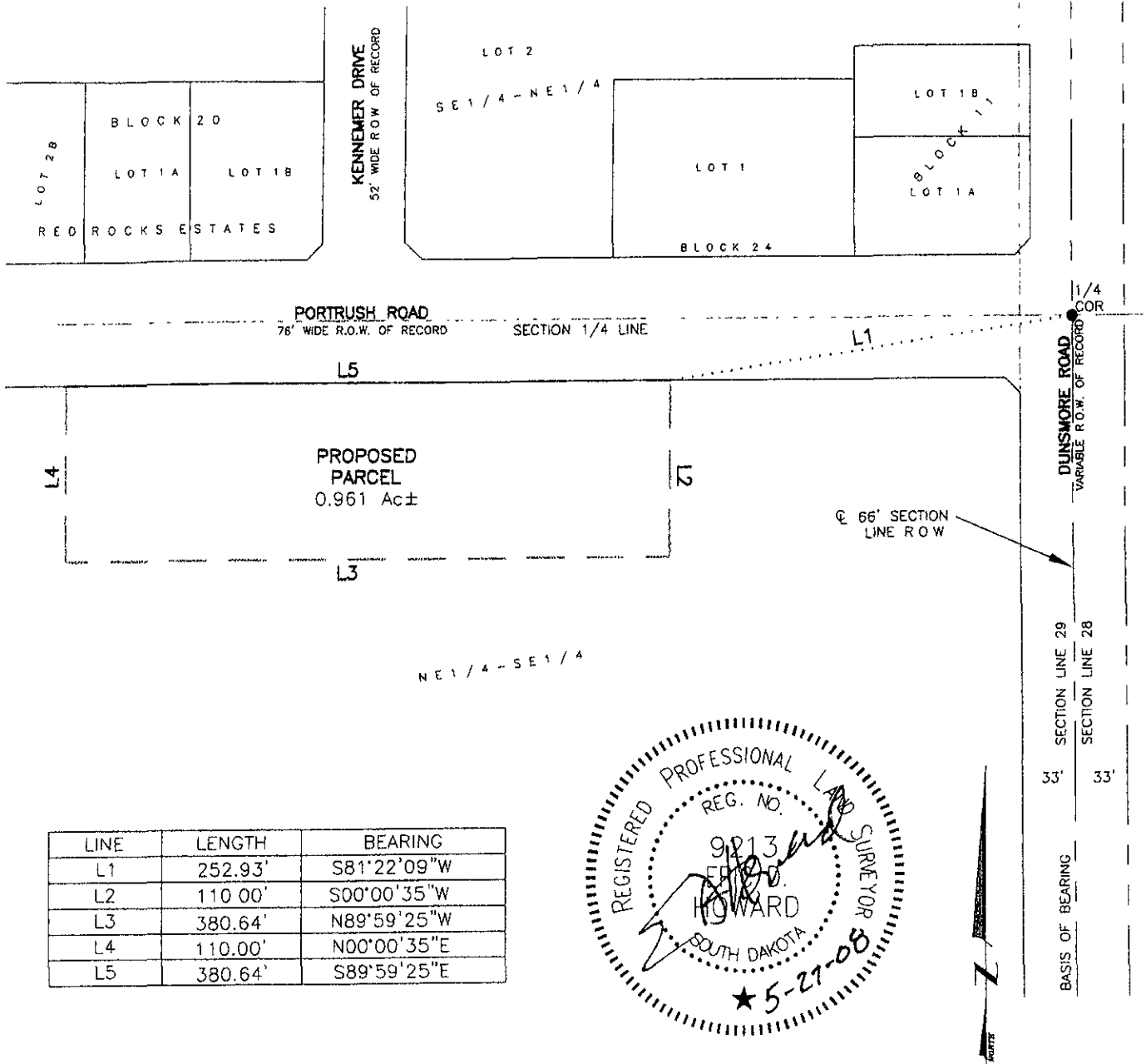
# MEETS AND BOUNDS DESCRIPTION

A PORTION OF THE NE1/4 OF THE SE1/4,  
SECTION 29, T1N, R7E, BHM,  
PENNINGTON COUNTY, SOUTH DAKOTA

RECEIVED

MAY 30 2008

Rapid City Growth  
Management Department



Renner & Associates, LLC.

616 Sixth St \* Rapid City, SD 57701 \* 605/721-7310  
FAX: 605/721-7313 \* E-MAIL Gary@RennerAssoc.com  
\* Spearfish 605/717-0016 \*

MAY 27, 2008



SCALE 1" = 100'