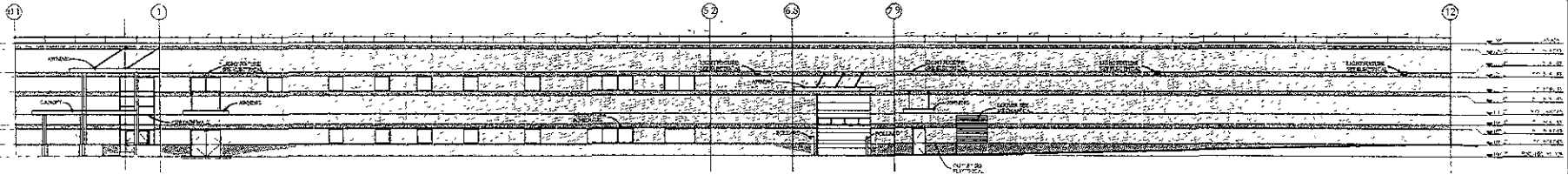
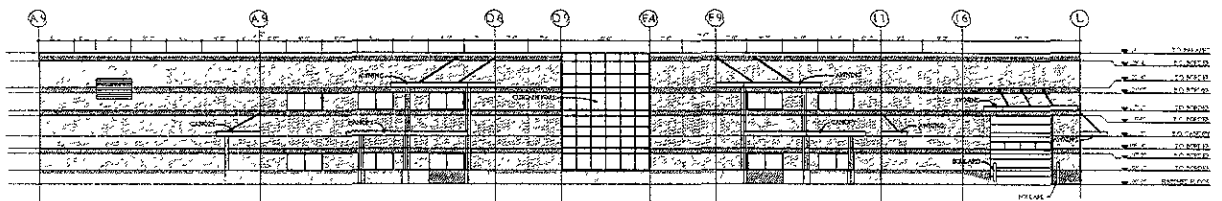


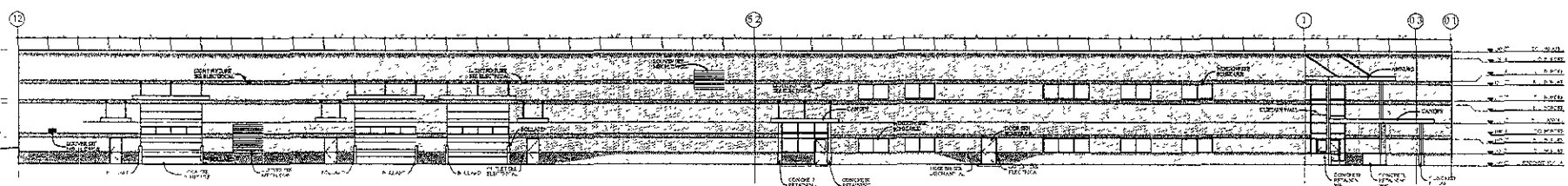
1 NORTH ELEVATION  
12.2' x 14'



2 EAST ELEVATION  
12.2' x 14'



3 SOUTH ELEVATION  
12.2' x 14'



4 WEST ELEVATION  
12.2' x 14'

CITY REVIEW SET  
NOT FOR CONSTRUCTION



DAVID L. ANDERSON  
REGISTERED PROFESSIONAL ENGINEER  
STATE OF SOUTH DAKOTA  
LICENSE NO. 12427

WEST RIVER ELECTRIC  
3250 E HIGHWAY 44  
RAPID CITY SD 57703

EXTERIOR ELEVATIONS