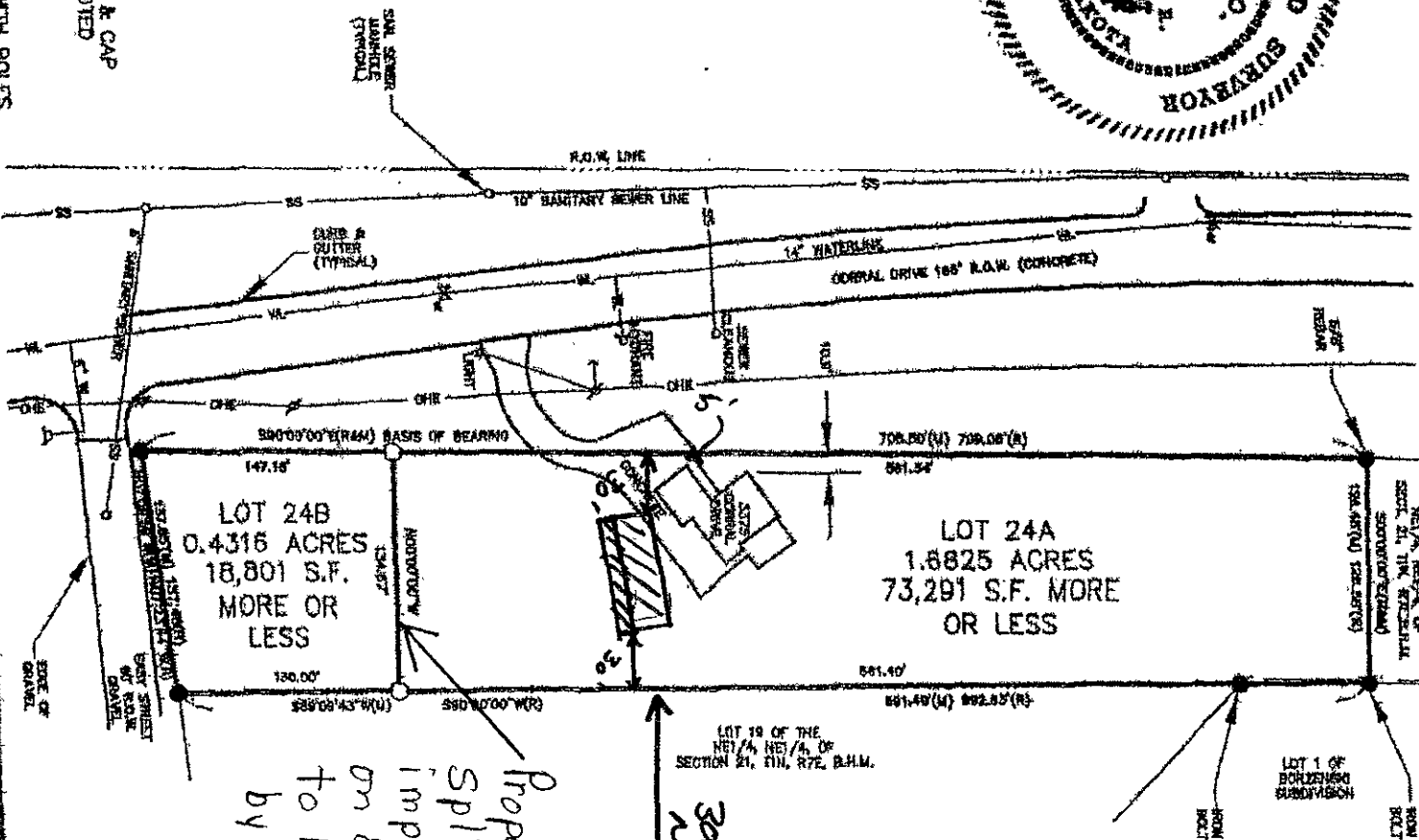


SITE PLAN OF PROPOSED LOTS 24A AND 24B



- LEGEND:
 SCALE 1" = 100'
 ● FOUND MONUMENT REBAR & CAP WITH U.S. 10118 UNLESS NOTED
 ○ SET MONUMENT
 (M) MEASURED DIMENSION
 (R) RECORD DIMENSION
 OHE - OVERHEAD ELECTRIC WITH POLES



SITE PLAN FOR LOTS 24A AND LOT 24B OF THE NE1/4 OF THE NE1/4 OF SECTION 21, T1N, R7E, B.H.M., FORMERLY LOT 24 OF THE NE1/4 OF THE NE1/4 OF SECTION 21, T1N, R7E, B.H.M., LOCATED IN RAPID CITY, PENNINGTON COUNTY, SOUTH DAKOTA

DRAWN BY: GRP
 CLIENT: CANNON
 DATE: JAN. 30, 2007
 FILE: ccrtrnc.dwg
 PINHOIT
 KENDALL
 SURVEYING
 P.O. BOX 704
 RAPID CITY, S.D. 57708
 PH. & FAX 605-384-7703

Proposed lot
 Split require
 improvement
 on east St
 to be approve
 by City.
 300' x 10'
 North Side