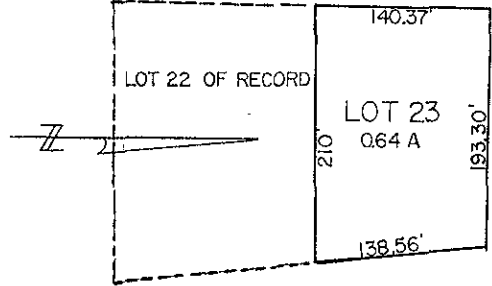


PLAT

OF

LOTS 23 & 24 NE 1/4 NE 1/4 SEC. 21, T. 1 N., R. 7 E., B. H. M.



STATE OF SOUTH DAKOTA
COUNTY OF PENNINGTON ss.

I, Emil Schoss and Tillie Schoss, do hereby certify that we are the owners of the land shown above as Lots 23 and 24 in the NE 1/4, Section 21, T. 1 N., R. 7 E., B. H. M., Pennington County, South Dakota, and that we authorized the survey and the above plat.

Emil Schoss
Tillie Schoss

 Owners

STATE OF SOUTH DAKOTA
COUNTY OF PENNINGTON ss.

I, Donald R. Harris, a Registered Land Surveyor, do hereby certify that being so authorized, I made the survey and plat of Lots 23 and 24 in the NE 1/4, Section 21, T. 1 N., R. 7 E., B. H. M., Pennington County, South Dakota, and that the above plat correctly shows the same.

Donald R. Harris
 Registered Land Surveyor

On the 12 day of May, 1961, before me, a Notary Public, personally appeared Emil Schoss and Tillie Schoss and Donald R. Harris, known to me to be the persons described in the foregoing instruments and acknowledged to me that they signed the same.

5-5-61
Notary Public

18 1965
My Commission Expires

Alvin W. W. W., Treasurer of Pennington County do hereby certify that all taxes which are liens upon the above described lands are fully paid according to the records of my office.

Dated this 12 day of May, 1961.

COUNTY AUDITOR'S CERTIFICATE

I hereby certify on this the 6 day of June, 1961, that the County Commissioners of Pennington County, South Dakota, did approve the above plat.

Fred K. Seltzer
 County Auditor

1960
 STATE OF SOUTH DAKOTA
 COUNTY OF PENNINGTON
 Filed for record this 6 day of June, A. D. 1961 at 4 o'clock and 5 minutes A. M. and recorded in Book 8 Page 21 of Plat Records Emil Schoss and Tillie Schoss
 Registrar of Deeds

