

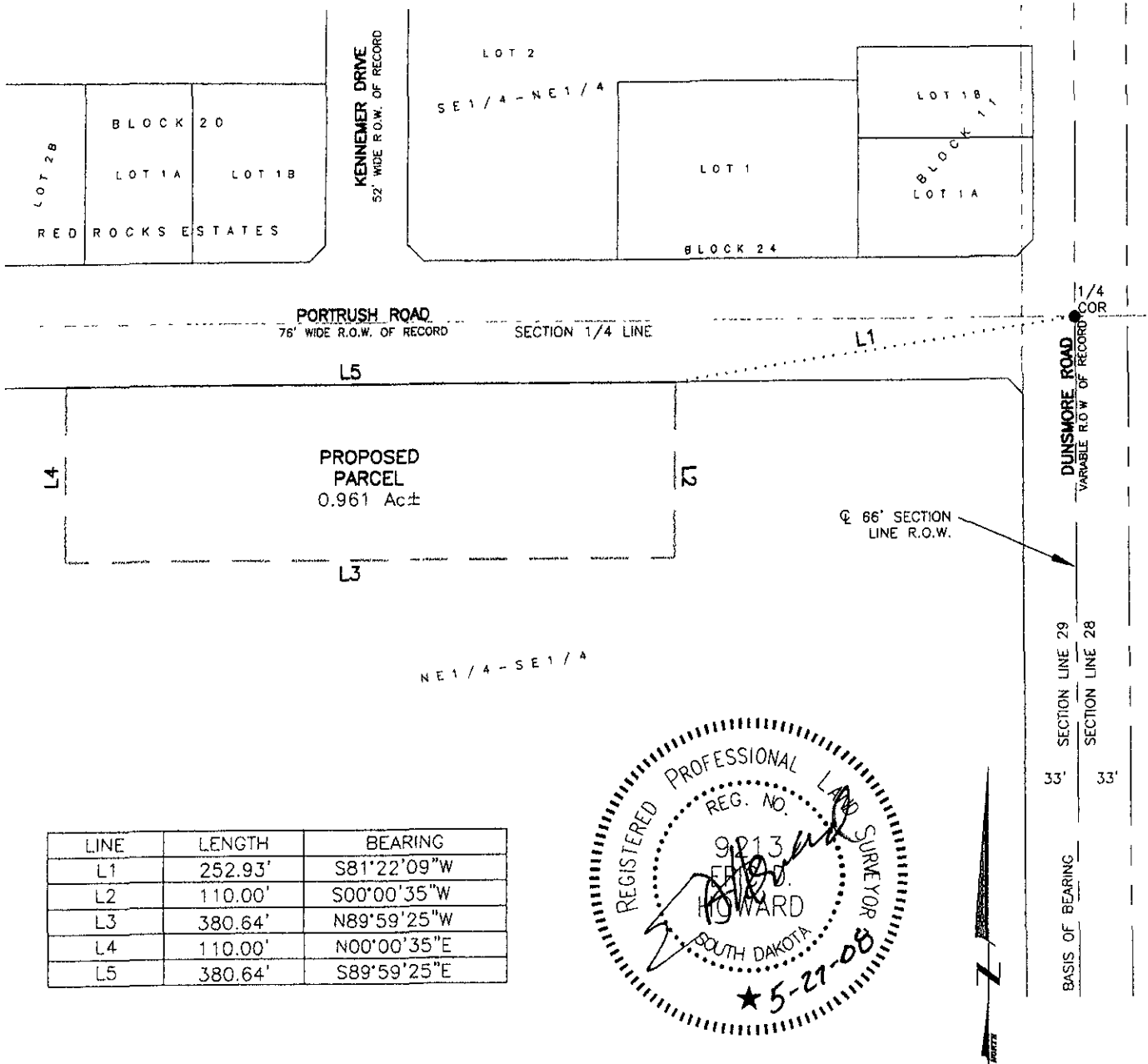
MEETS AND BOUNDS DESCRIPTION

A PORTION OF THE NE1/4 OF THE SE1/4
SECTION 29, T1N, R7E, BHM,
PENNINGTON COUNTY, SOUTH DAKOTA

RECEIVED

MAY 30 2008

Rapid City Growth
Management Department

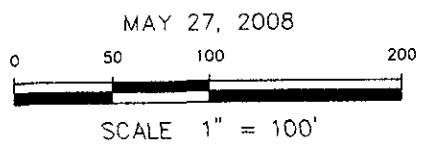


LINE	LENGTH	BEARING
L1	252.93'	S81°22'09"W
L2	110.00'	S00°00'35"W
L3	380.64'	N89°59'25"W
L4	110.00'	N00°00'35"E
L5	380.64'	S89°59'25"E



Renner & Associates, LLC.

616 Sixth St. * Rapid City, SD 57701 * 605/721-7310
FAX: 605/721-7313 * E-MAIL: Gary@RennerAssoc.com
* Spearfish 605/717-0016 *



MAY 27, 2008