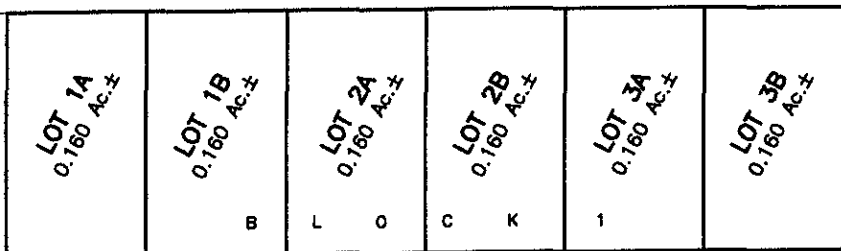
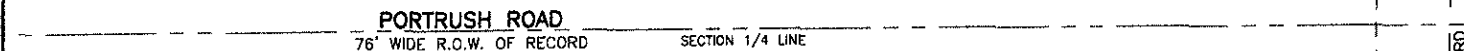
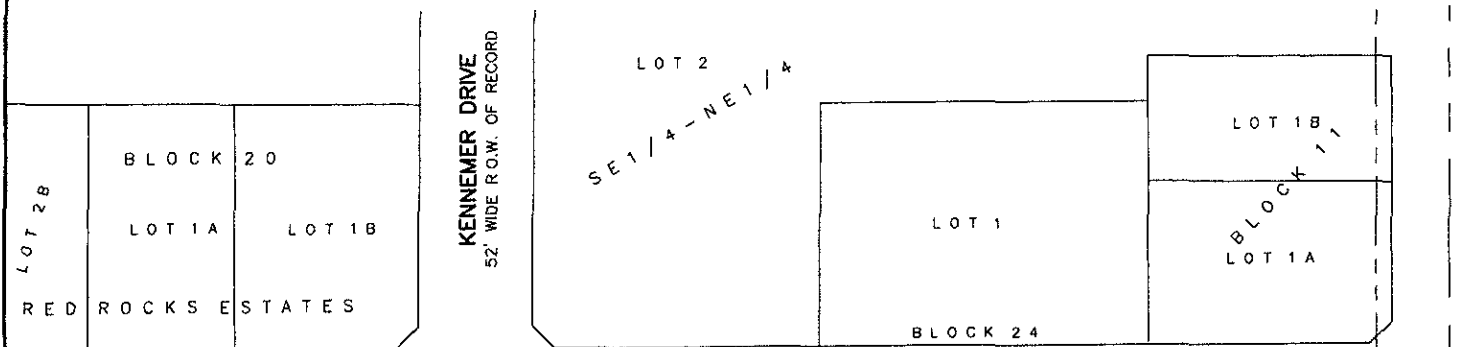


08PL089

PLAT OF

LOTS 1A, 1B, 2A, 2B, 3A, & 3B OF BLOCK 1, RED ROCK SHADOWS SUBDIVISION

(formerly a portion of the NE1/4 OF THE SE1/4)
LOCATED IN THE NE1/4 OF THE SE1/4,
SECTION 29, T1N, R7E, BHM,
PENNINGTON COUNTY, SOUTH DAKOTA



DUNSMORE ROAD
VARIABLE R.O.W. OF RECORD

RECEIVED

JUN 13 2008

NE 1/4 - SE 1/4

Rapid City Growth
Management & Development

66' SECTION
LINE R.O.W.



SECTION LINE 29
SECTION LINE 28
33' 33'

Renner & Associates, LLC.

616 Sixth St. * Rapid City, SD 57701 * 605/721-7310
FAX: 605/721-7313 * E-MAIL: Gary@RennerAssoc.com
* Spearfish 605/717-0016 *

JUNE 12, 2008
SCALE: NTS



CITY HALL 1903