

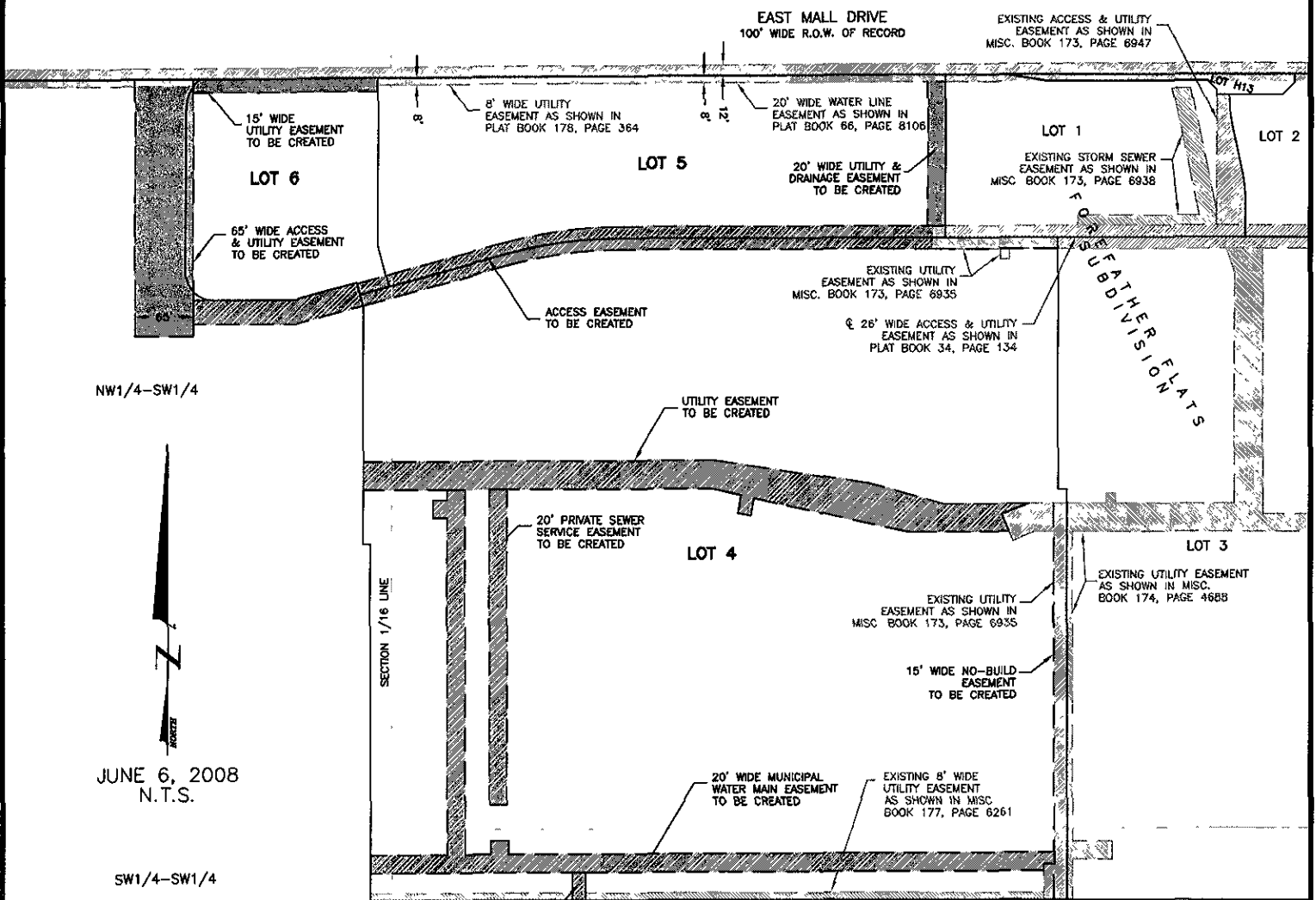
# PLAT OF LOTS 4-6, FOREFATHER FLATS SUBDIVISION

(formerly a portion of the SW1/4)  
LOCATED IN THE SW1/4,  
SECTION 28, T2N, R8E, BHM,  
RAPID CITY, PENNINGTON COUNTY, SOUTH DAKOTA

LOT 3  
GLM SUBDIVISION

NW1/4-SW1/4

NE1/4-SW1/4



NW1/4-SW1/4



JUNE 6, 2008  
N.T.S.

SW1/4-SW1/4

15' WIDE SIGN  
EASEMENT TO  
BE CREATED

INTERSTATE I-90



CITY HALL 1903

## Renner & Associates, LLC.

JUN 03 2008

616 Sixth St. \* Rapid City, SD 57701 \* 605/721-7310  
FAX: 605/721-7313 \* E-MAIL: Gary@RennerAssoc.com  
\* Spearfish 605/717-0016 \*

Rapid City Growth  
Management Department