

OF
METES & BOUNDS DESCRIPTION
OF A PARCEL OF LAND LOCATED IN THE
SW 1/4 OF SECTION 23,
T1N, R7E, BHM, RAPID CITY
PENNINGTON COUNTY, SOUTH DAKOTA



SCALE: 1" = 200'
FEBRUARY 8, 2007

RECEIVED

FEB 11 2008

Rapid City Growth
Management Department

LATE
SUBMITTAL

TRACT G

U.S. HIGHWAY 16

NW 1/4

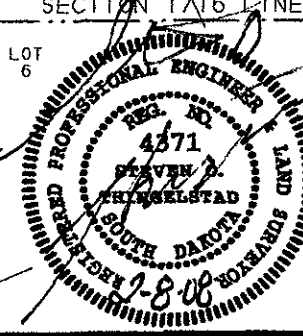
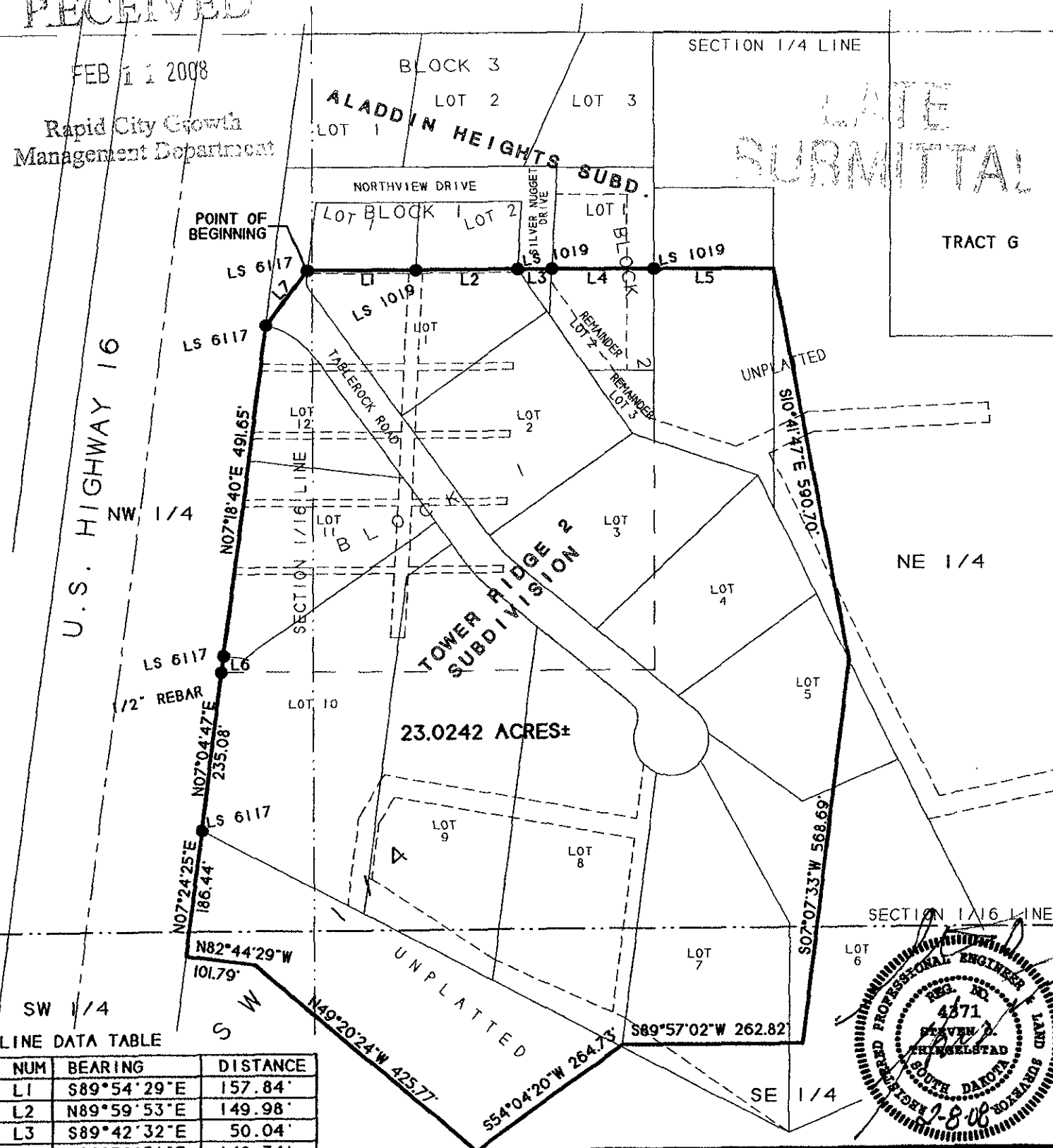
NE 1/4

SW 1/4

SE 1/4

LINE DATA TABLE

NUM	BEARING	DISTANCE
L1	S89°54'29"E	157.84'
L2	N89°59'53"E	149.98'
L3	S89°42'32"E	50.04'
L4	S89°58'51"E	149.34'
L5	S89°56'16"E	175.49'
L6	N07°34'03"E	24.08'
L7	N36°47'28"E	101.19'



PREPARED BY: STEVEN O. THINGELSTAD
 BRITTON ENGINEERING & LAND SURVEYING, INC.
 8035 BLACK HAWK ROAD, SUITE 5,
 BLACK HAWK, SOUTH DAKOTA 57718
 TELEPHONE: (605) 716-7088