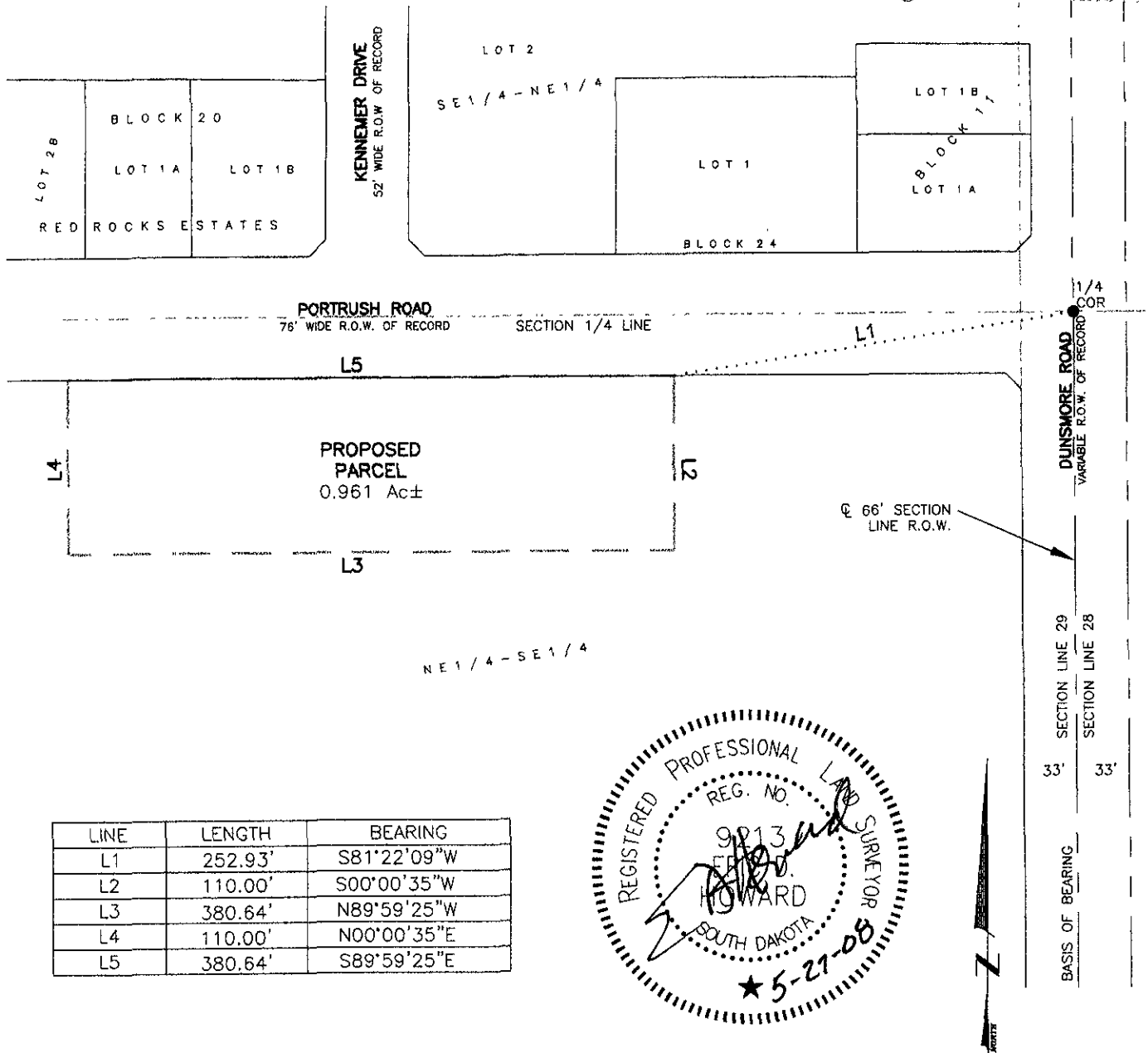


# MEETS AND BOUNDS DESCRIPTION

A PORTION OF THE NE1/4 OF THE SE1/4  
SECTION 29, T1N, R7E, BHM, **RECEIVED**  
PENNINGTON COUNTY, SOUTH DAKOTA

MAY 30 2008

Rapid City Growth  
Management Department



LINE	LENGTH	BEARING
L1	252.93'	S81°22'09"W
L2	110.00'	S00°00'35"W
L3	380.64'	N89°59'25"W
L4	110.00'	N00°00'35"E
L5	380.64'	S89°59'25"E



## Renner & Associates, LLC.

616 Sixth St. \* Rapid City, SD 57701 \* 605/721-7310  
FAX: 605/721-7313 \* E-MAIL: Gory@RennerAssoc.com  
\* Spearfish 605/717-0016 \*

MAY 27, 2008



SCALE 1" = 100'