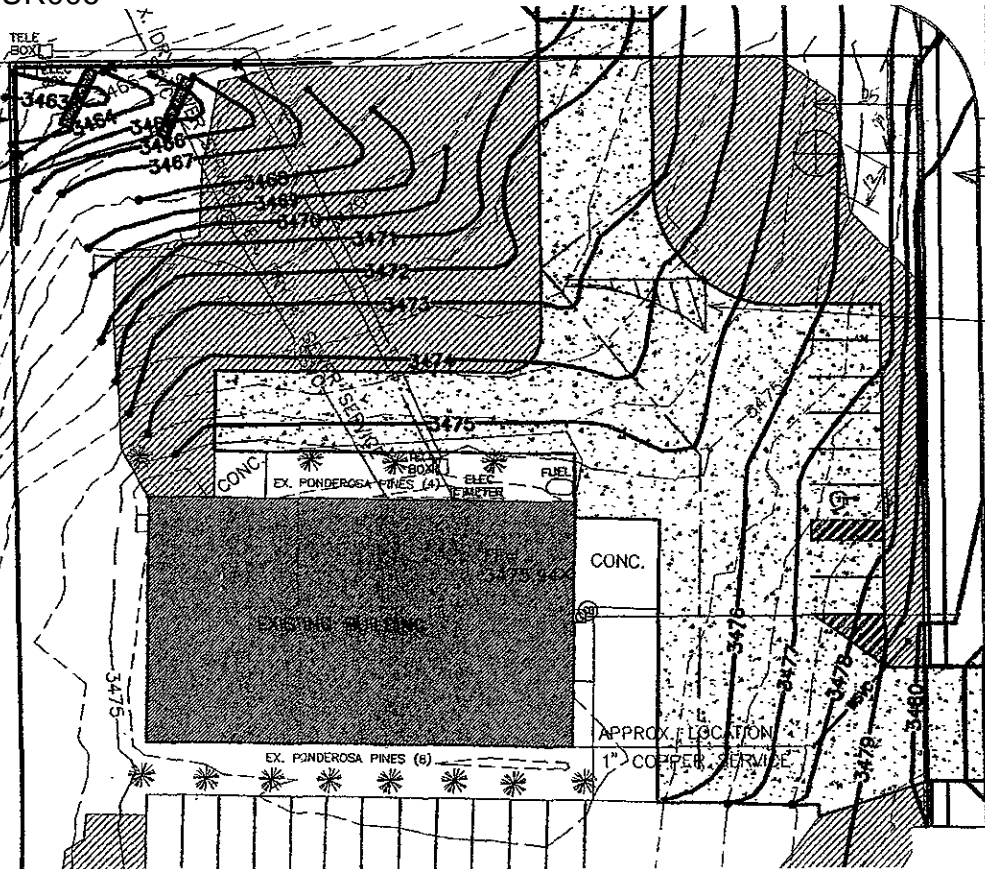


TELE
BOX



HICKOCK TRAIL
PREVIOUSLY DEDICATED
60' R.O.W.

Proposed 33 1/2 FT tower w/ 2 1/2 FT Pier = 36' Tall
 Proposed 25 FT Set back w/ 12 FT Radius
 36 FT Tower less 6' radius arms = 30' Clear to Ground

Allowable locations

LOT 1
OF BLOCK 4

GRADING PLAN

LOT 1R OF BLOCK 5 OF FARRAR BUSINESS PARK

LEGAL DESCRIPTION:

*
 *
 LOT 1R OF BLOCK 5
 FARRAR BUSINESS PARK
 LOCATED IN THE N 1/4 OF THE SE 1/4
 SECTION 16, T24N, R7E, B.H.M.
 RAPID CITY, PENNINGTON COUNTY, SOUTH DAKOTA
 SURVEYED BY: SCJ
 DRAWN BY: DMH