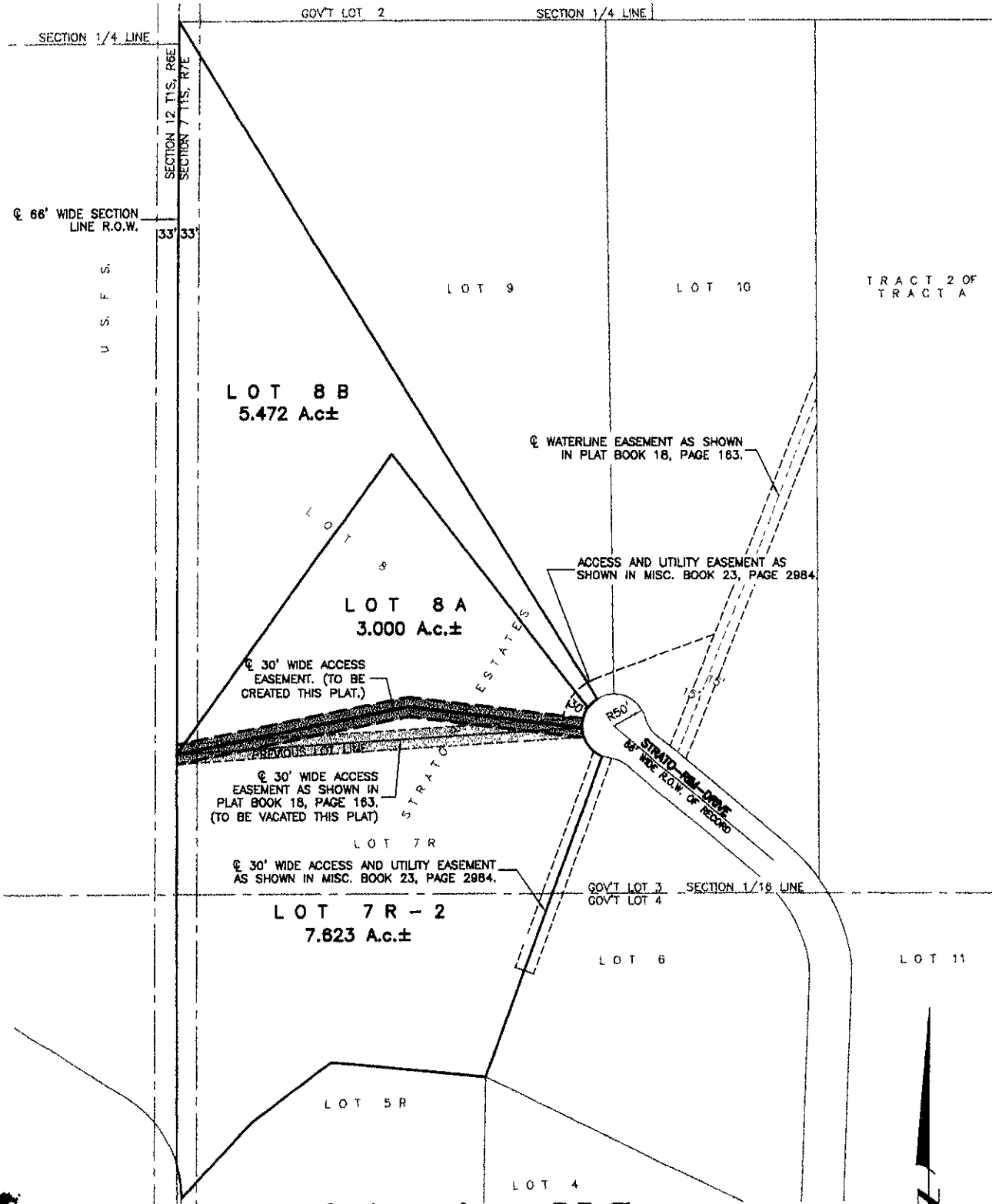


PLAT OF LOTS 7R-2, 8A AND 8B OF STRATO RIM ESTATES

08SV032

(formerly Lot 7R and Lot 8 of Strato Rim Estates)

LOCATED IN GOVERNMENT LOTS 3 AND 4 OF
SECTION 7, T1S, R7E, BHM,
PENNINGTON COUNTY, SOUTH DAKOTA



Renner & Associates, LLC.

616 Sixth St. * Rapid City, SD 57701 * 605/721-7310
 FAX: 605/721-7313 * E-MAIL: Gary@RennerAssoc.com
 * Spearfish 605/717-0016 *



CITY HALL 1903



N.T.S.