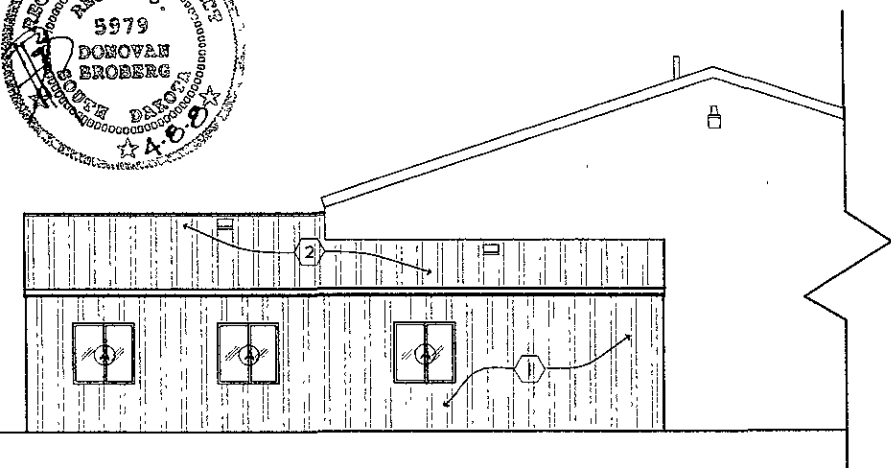
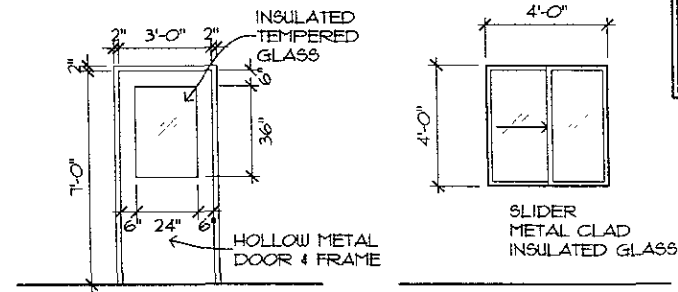


1 NORTH ELEVATION
A3.1 1/8"=1'-0"



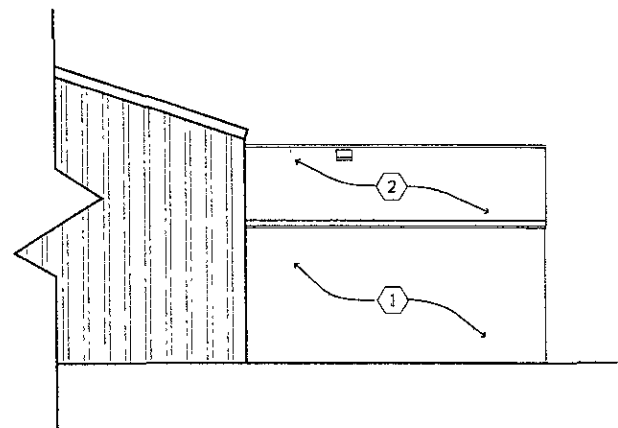
2 WEST ELEVATION
A3.1 1/8"=1'-0"



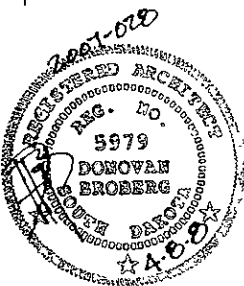
4 DOOR/WINDOW TYPES
A3.1 1/4"=1'-0"

KEY NOTES

- ① VERTICAL SHEET METAL SIDING TO MATCH EXISTING
- ② ROOF SHEET METAL TO MATCH EXISTING



3 EAST ELEVATION
A3.1 1/8"=1'-0"

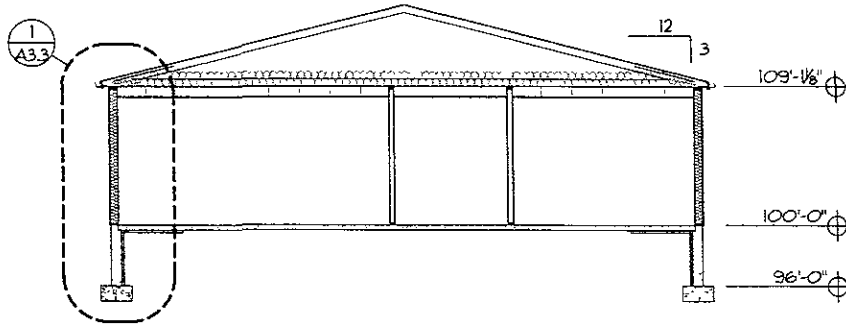
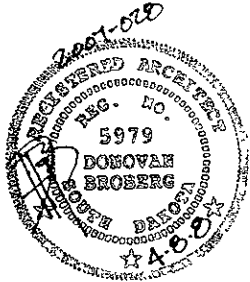


DATE APRIL 25 2008
PROJECT MANAGER DONOVAN BROBERG
PROJECT NUMBER 2007-028
REVISIONS

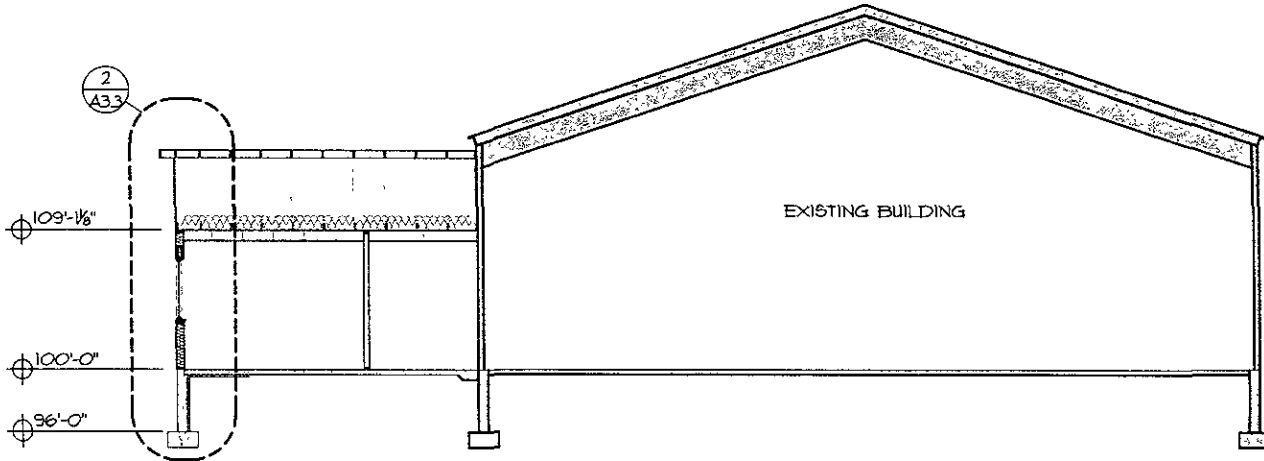
SD DOC TRUSTEE
RAPID CITY SOUTH DAKOTA

ELEVATIONS

A3.1



1 BUILDING SECTION
A3.2 1/8"=1'-0"

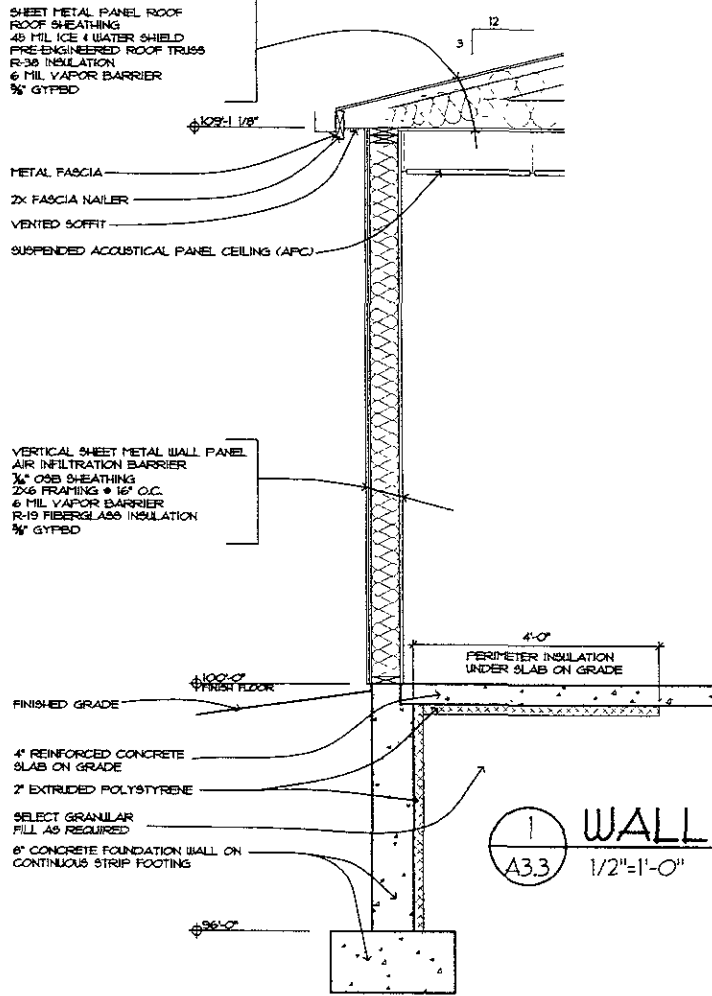


2 BUILDING SECTION
A3.2 1/8"=1'-0"

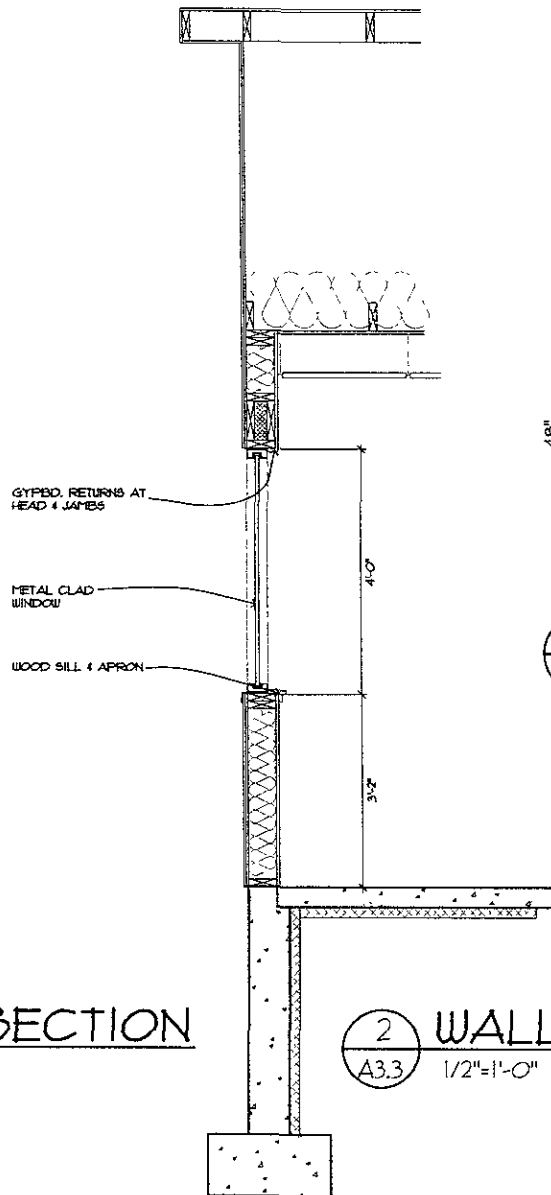
DATE APRIL 25 2008
PROJECT MANAGER DONOVAN BROBERG
PROJECT NUMBER 2007-028
REVISIONS

SD DOC TRUSTEE
RAPID CITY SOUTH DAKOTA
BUILDING SECTIONS

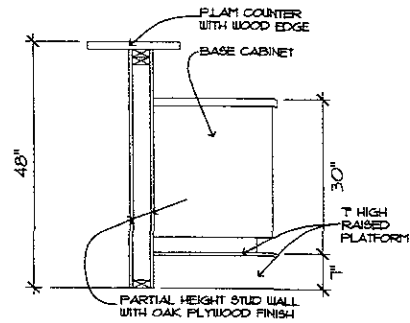
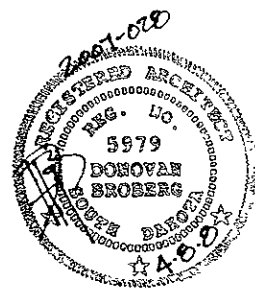
A3.2



1 WALL SECTION
A3.3 1/2"=1'-0"



2 WALL SECTION
A3.3 1/2"=1'-0"



3 SECTION
A3.3 1/2"=1'-0"

ARC HITECTURE
INTERNATIONAL

450 QUAIL DRIVE, SUITE 200
RAPID CITY, SOUTH DAKOTA 57701-2000
TEL: 605-342-1234
FAX: 605-342-1235
WWW.ARC-HITECTURE.COM

DATE: APRIL 25 2008

PROJECT MANAGER: DONOVAN BROBERG

PROJECT NUMBER: 2007-028

REVISIONS:

SD DOC TRUSTEE

RAPID CITY, SOUTH DAKOTA

WALL SECTIONS

A3.3